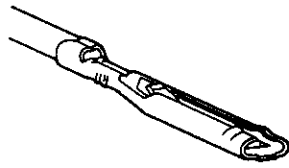


#### Crimp, Snap-in Receptacle Contacts



#### Materials:

**Contact** — Phosphor bronze

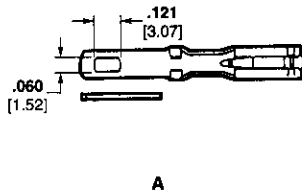
**Finish** — Selective gold plating in contact mating area over .000030 [0.00076] nickel, see table for gold thicknesses

#### AMP-BLADE Connector Snap-in Receptacle Contacts

Wire (Insulation) Ranges	Gold Plate Thickness	Side Feed Contact Part Number	
		Strip Form	Loose Piece*
24-20 AWG 0.2-0.5 mm <sup>2</sup> (.040-.080) (1.02-2.03)	.000030 0.00076	531586-3	531586-6
	.000050 0.00127	531586-4	—
28-24 AWG 0.09-0.2 mm <sup>2</sup> (.030-.060) (0.76-1.52)	.000030 0.00076	531587-3	531587-6
1: 18 AWG 0.8-0.9 mm <sup>2</sup> or 2: 20 or 22 AWG 0.3-0.6 mm <sup>2</sup> (.067-.090) (1.70-2.28)	.000015 0.00038	—	—
	.000030 0.00076	531589-3	531589-6

\*See page 6120 for crimping tool.

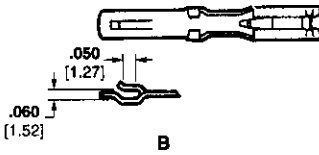
#### Solder—Tab Receptacle Contacts



A

#### Materials:

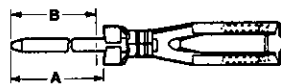
**Contact** — Phosphor bronze



B

Type	Maximum Extension Beyond Back Face of Block	Part Numbers—Loose Piece	
		Commercial Type	Gold Plate Thickness .000030 [0.00076] over .000030 [0.00076] Nickel
A	.390 9.91	66086-2	66086-2
	.375 9.52	66086-4	66086-4

#### Post-Type Receptacle Contacts



#### Materials:

**Contact** — Phosphor bronze

**Finish** — Selective gold plating in contact mating area over .000030 [0.00076] nickel, (see table for gold thicknesses); posts, tin plated

Dimensions		Gold Plate Thickness	Part Numbers - Loose Piece	
A	B*		.031 x .062 [0.79 x .157] Posts	.045 x .045 [1.14 x 1.14] Posts
.410 10.41	.370 9.40	.000015 0.00038	582652-1	—
		.000030 0.00076	1-582261-1	1-582364-1
.640 16.26	.600 15.24	.000015 0.00038	582652-2	—
		.000030 0.00076	1-582261-2	1-582364-2
.810 20.57	.770 19.56	.000015 0.00038	582652-3	—
		.000030 0.00076	1-582261-3	1-582364-3
1.040 26.42	1.000 25.4	.000015 0.00038	582652-4	—
		.000030 0.00076	1-582261-4	1-582364-4

\*Post length after inserted into housing.

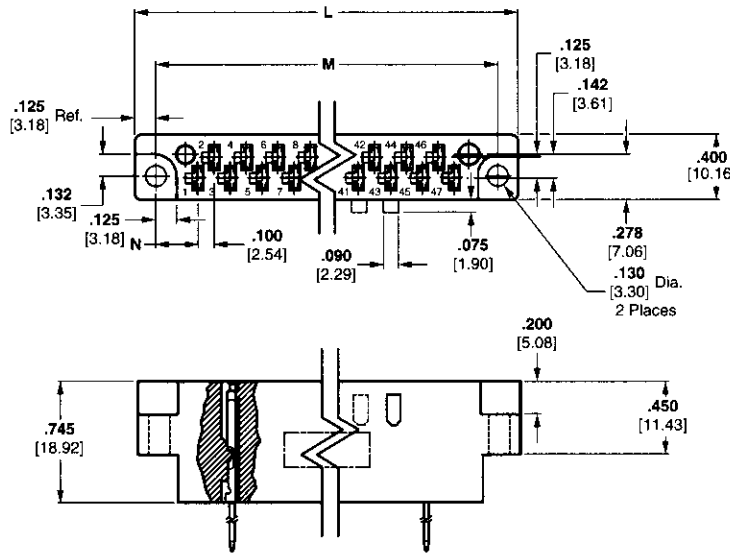
**Pre-loaded Assemblies  
for Crimp Contacts,  
TERMI-POINT Clip or  
Wrap-Type Post Contacts,  
Solder/Weld Contacts**

**Materials:**

**Housing** — Diallyl phthalate glass-filled polyester, green

**Contact** — Phosphor bronze

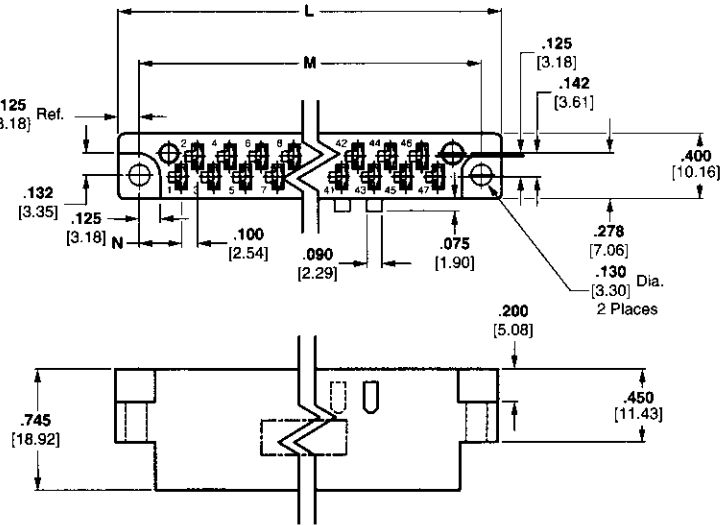
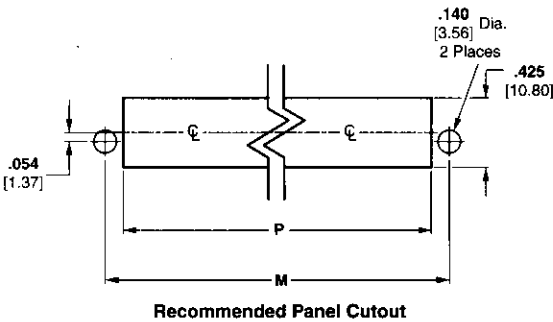
**Posts** — Brass, tin plated



**Receptacle Housing**

**Material:**

Diallyl phthalate



Printed Circuit Board Connectors

No. of Pos.	Post in.	Length mm	No. of Clip or Wrap Type Terminations	Dimensions				Cutout Dim. for Mounting P	Diallyl Phthalate			
				L	M	N	Preloaded Housing Part No.					
							Commercial Type Part No.		Housings for Crimp or Eyelet Type Contact			
17	.370	9.40	1	2.390 60.71	2.130 54.10	.265 6.73	1.910 48.51	582828-4	3-582151-1	21097/13-01	5-582151-1	
23	.770	19.65	3	2.990 75.95	2.730 69.34	.265 6.73	2.510 63.75	—	3-582151-2	21097/13-02	5-582151-2	
29	1.000	25.40	4	3.590 91.19	3.330 84.58	.265 6.73	3.110 78.99	582830-1	3-582151-3	21097/13-03	5-582151-3	
		.770	19.65					3				582830-2
35	1.000	25.40	4	4.190 106.43	3.930 99.82	.265 6.73	3.710 94.23	582831-1	3-582151-4	21097/13-04	5-582151-4	
		.770	19.65					3				—
		.600	15.24					2				582831-4
41	.770	19.65	3	4.790 121.67	4.530 115.06	.265 6.73	4.310 109.47	—	3-582151-5	21097/13-05	5-582151-5	
		.600	15.24					2				582832-4
		.370	9.40					1				—
47	1.000	25.40	4	5.623 142.82	5.363 136.22	.381 9.68	5.143 130.63	582819-1	3-582307-1	21097/13-06	5-582307-1	
		.770	19.65					3				582819-2
		.600	15.24					2				—
	.370	9.40	1	—	—	—	—	—	—	—	—	

单击下面可查看定价，库存，交付和生命周期等信息

[>>TE Connectivity\(泰科\)](#)