

THIS DRAWING IS UNPUBLISHED.
 DIFFUSION RESTREINTE
 © COPYRIGHT 2006 BY -
 ALL RIGHTS RESERVED.
 TOUS DROITS RESERVES

RELEASED FOR PUBLICATION
 LIBRE A LA DIFFUSION
 2006

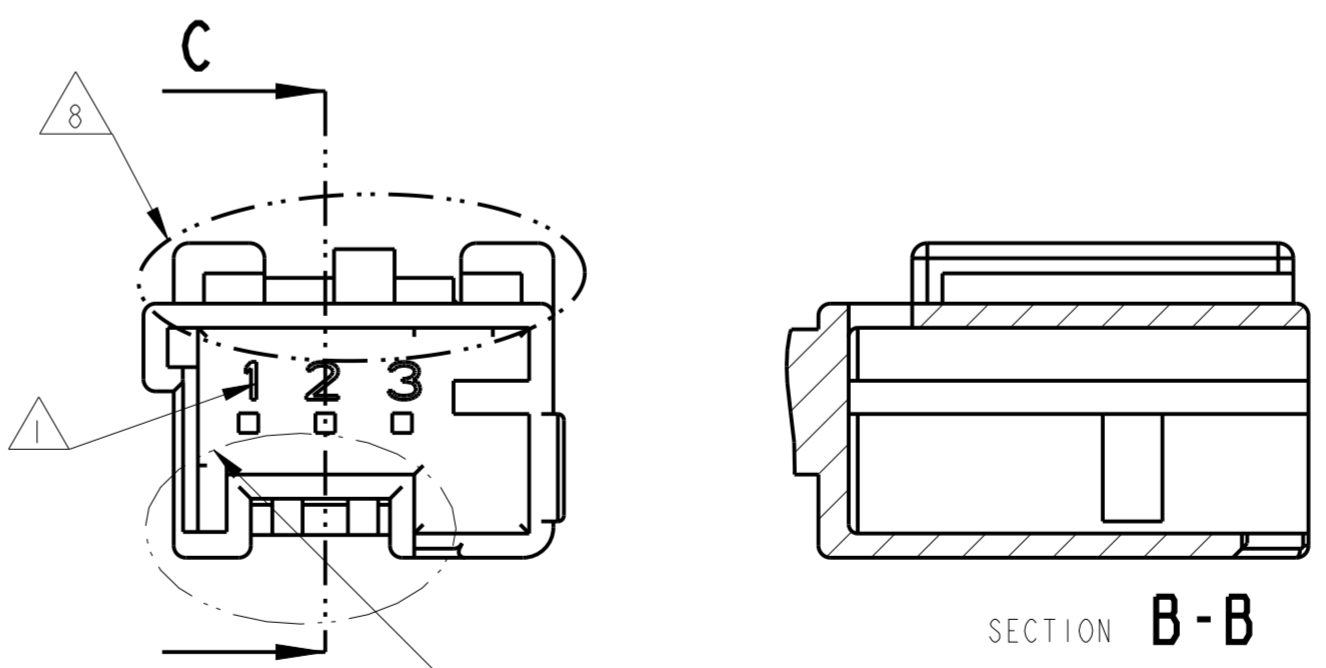
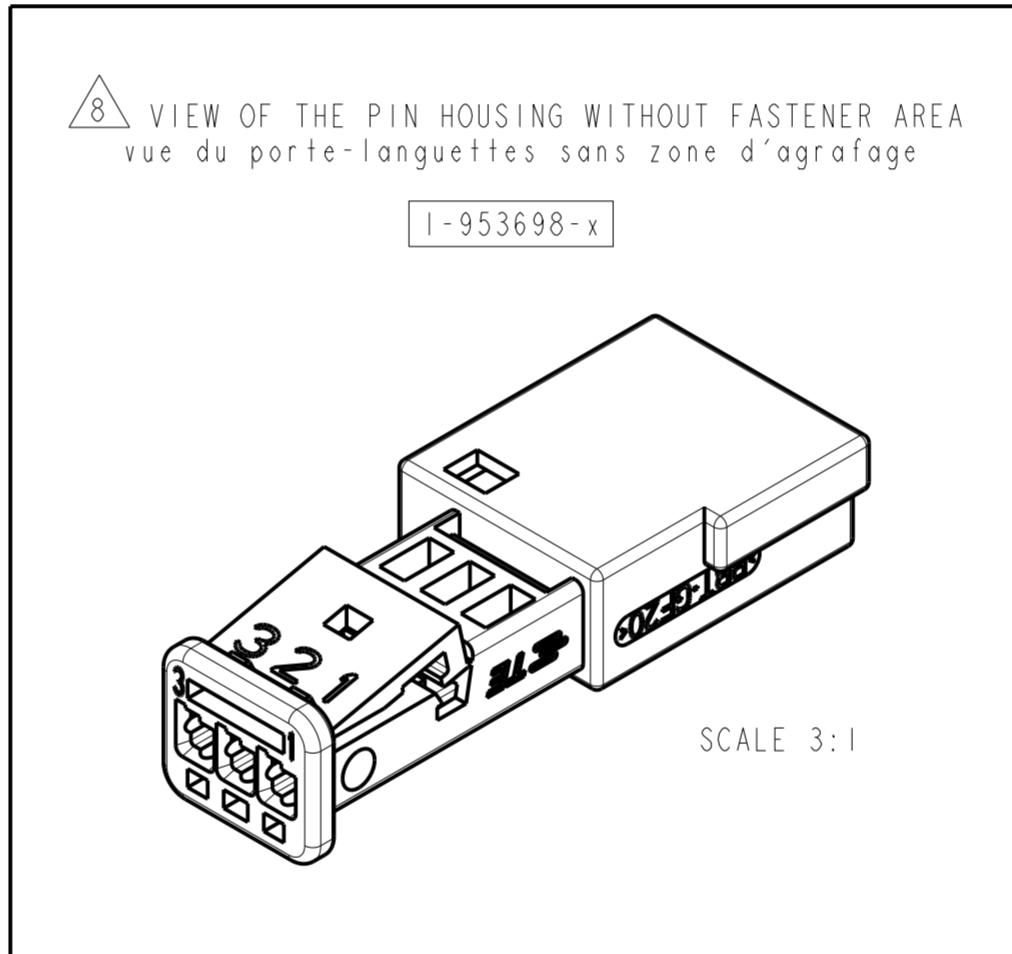
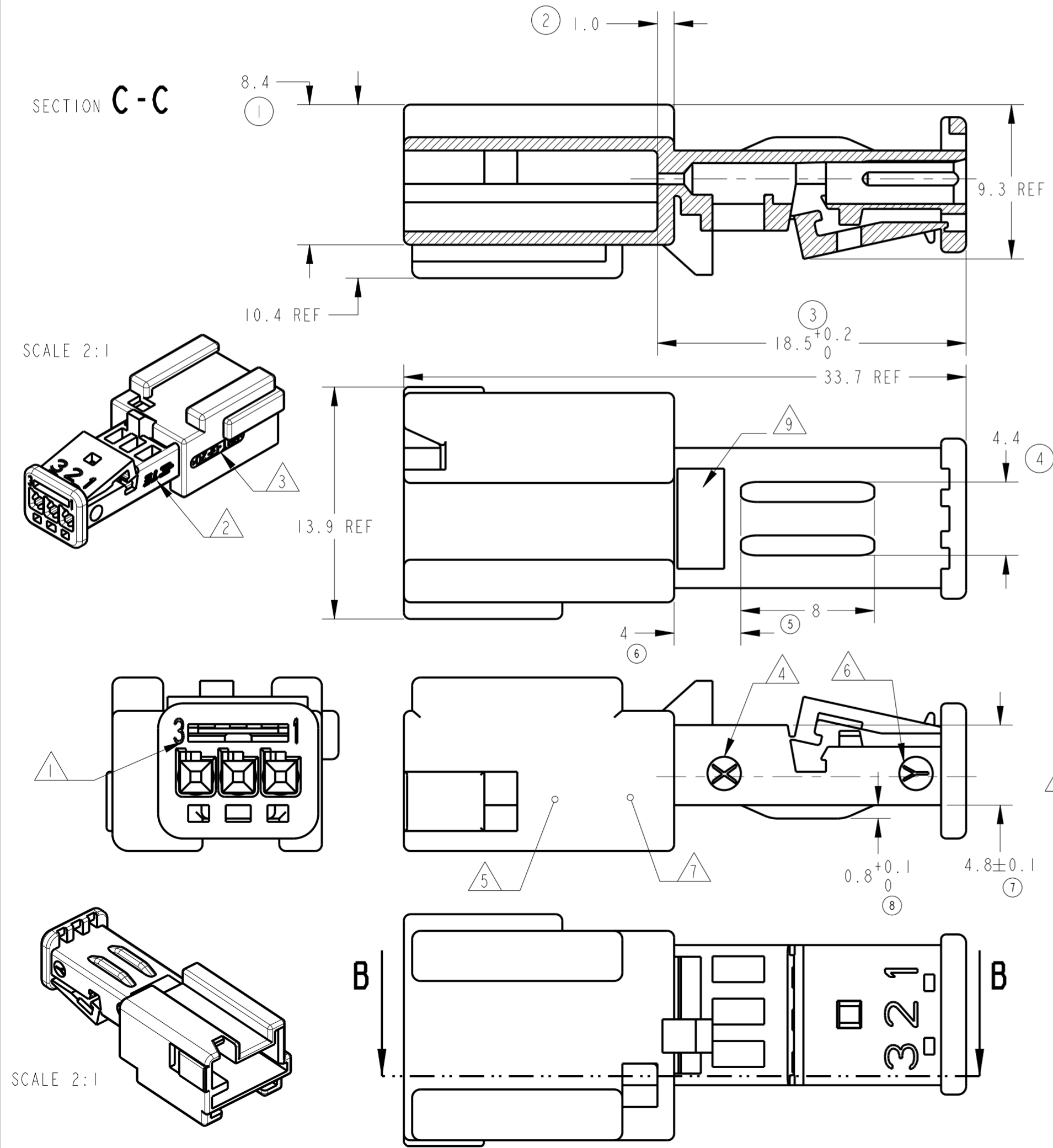
LOC F
 DIST 00

REVISIONS					
P	LTR	DESCRIPTION MODIFICATIONS	DATE	DWN DESS.	APVD APP.
B		NEW PART NUMBER 2-953698-1 ADDED	05SEP2012	EC	XR
C		ADD MATERIAL DESCRIPTION	02APR2021	ES	XR

KEYING TABLE (table de detrompage)

COLOR couleur	BLACK noir	WHITE blanc	BLUE bleu	YELLOW jaune	GREY gris	BROWN marron
DETAIL Z ECHELLE 4:1						
TE PN (ref TE) WITH THE FASTENER AREA	0-953698-1 2-953698-1 (SEE NOTE 9)	0-953698-2	0-953698-3	0-953698-4	0-953698-5	0-953698-6
TE PN (ref TE) WITHOUT THE FASTENER AREA	1-953698-1	1-953698-2	1-953698-3	1-953698-4	1-953698-5	1-953698-6

- ① CAVITY MARKING
reperes alveoles
- ② AMP STAMP OR TE STAMP FOLLOWING MOLD
logo AMP ou logo TE suivant moule
- ③ MATERIAL IDENTIFICATION
identification matiere
- ④ MOLD IDENTIFICATION OPTIONAL
identification moule optionnel
- ⑤ MOLD REVISION NUMBER OPTIONAL
indice de revision moule optionnel
- ⑥ MOLD CAVITY IDENTIFICATION NUMBER
numero d'empreinte du moule
- ⑦ EXCHANGEABLE MANUFACTURING DATE STD OR YEAR/MONTH
date de fabrication exchangeable std ou annee/mois
- ⑧ REMOVABLE FASTENER AREA
zone d'agrafage kit de conversion
- ⑨ "PSA" CUSTOMER STAMP POSSIBLE
NO MARKING IN THIS AREA FOR PN 2-953698-1
Marquage logo "PSA" possible
Aucun marquage dans cette zone pour PN 2-953698-1



THIS DRAWING IS A CONTROLLED DOCUMENT. CE PLAN EST UN DOCUMENT CONTROLE PAR AMP INCORPORATED. IL EST SUSCEPTIBLE D'ETRE REVISE. CONTACTER LE SERVICE TECHNIQUE D'AMP DE FRANCE POUR OBTENIR LA DERNIERE REVISION.		DWN/DESSINE 22MAR2006 M. POLIFONIE CHK/VERIFIE 22MAR2006 X ROULLIARD APVD/APPROUVE 22MAR2006 J. DAHER		NAME TITRE 3 POS. MQS PIN HOUSING POSITIVE MATE porte-languettes 3V MQS avaloir	
DIMENSIONS: mm		TOLERANCES UNLESS OTHERWISE SPECIFIED: TOLERANCES NON SPECIFIEES		PRODUCT SPEC SPEC. PRODUIT 108-15226	
MATERIAL/MATIERE PBT-GF20		FINISH/FINITION		APPLICATION SPEC SPEC. APPLICATION 411-15626	
WEIGHT MASSE APPROX. 1.8g		CAGE CODE A2100779		DRAWING NO No PLAN C-953698	
Customer Drawing /PLAN CLIENT		UNIQUEMENT POUR REFERENCE		SCALE ECHELLE 4:1	
SHEET FEUILLE		OF DE		REV C	

单击下面可查看定价，库存，交付和生命周期等信息

[>>TE Connectivity\(泰科\)](#)