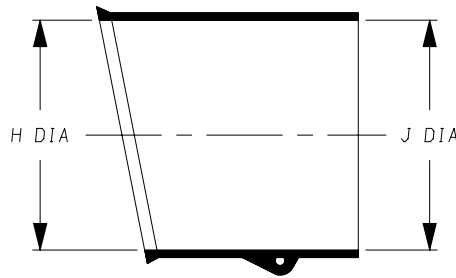
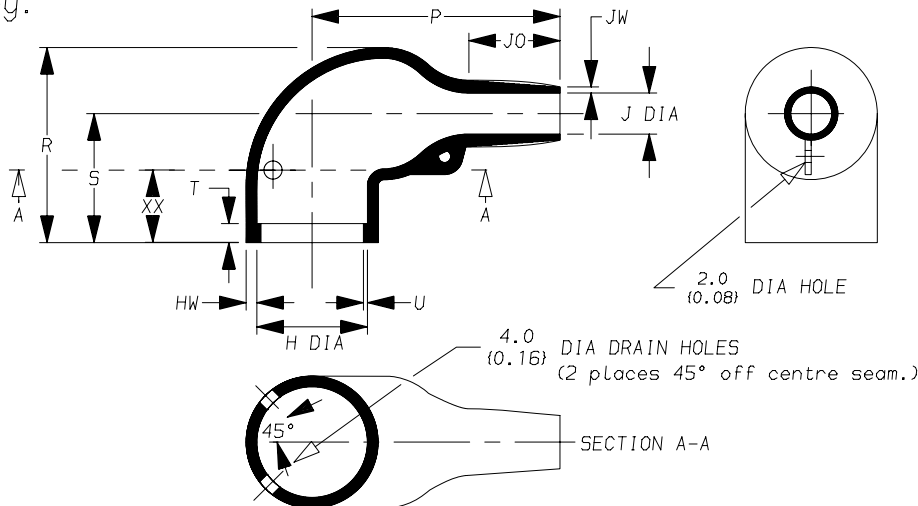


a) Part as supplied.

222K1\*\*-\*-G44



b) Part after unrestricted recovery.



**DIMENSIONS** in millimetres  
(in inches, for reference)

| Part No. | H            |                | J            |                | P             | R            | S            | T             | U             | JO             | HW            | JW            | XX           |
|----------|--------------|----------------|--------------|----------------|---------------|--------------|--------------|---------------|---------------|----------------|---------------|---------------|--------------|
|          | Min<br>a     | Max<br>b       | Min<br>a     | Max<br>b       | ±10%<br>b     | ±10%<br>b    | ±10%<br>b    | ±10%<br>b     | ±10%<br>b     | ±10%<br>b      | ±20%<br>b     | ±20%<br>b     | ±2<br>b      |
| 222K121  | 24<br>{0.94} | 10.4<br>{0.41} | 24<br>{0.94} | 5.6<br>{0.22}  | 25<br>{0.98}  | 25<br>{0.98} | 19<br>{0.75} | 3.0<br>{0.12} | 1.0<br>{0.04} | 8.5<br>{0.33}  | 1.3<br>{0.05} | 0.5<br>{0.02} | 19<br>{0.75} |
| 222K132  | 30<br>{1.18} | 14.2<br>{0.56} | 30<br>{1.18} | 5.9<br>{0.23}  | 32<br>{1.26}  | 27<br>{1.06} | 20<br>{0.79} | 3.0<br>{0.12} | 1.0<br>{0.04} | 8.5<br>{0.33}  | 1.5<br>{0.06} | 0.8<br>{0.03} | 22<br>{0.87} |
| 222K142  | 31<br>{1.22} | 18.0<br>{0.71} | 31<br>{1.22} | 7.1<br>{0.28}  | 39<br>{1.54}  | 31<br>{1.22} | 21<br>{0.83} | 3.0<br>{0.12} | 1.0<br>{0.04} | 15.0<br>{0.59} | 1.8<br>{0.07} | 1.0<br>{0.04} | 22<br>{0.87} |
| 222K152  | 36<br>{1.42} | 22.4<br>{0.88} | 36<br>{1.42} | 8.4<br>{0.33}  | 46<br>{1.81}  | 38<br>{1.50} | 26<br>{1.02} | 3.0<br>{0.12} | 1.0<br>{0.04} | 16.0<br>{0.63} | 1.8<br>{0.07} | 1.0<br>{0.04} | 22<br>{0.87} |
| 222K163  | 43<br>{1.69} | 28.2<br>{1.11} | 43<br>{1.69} | 9.9<br>{0.39}  | 55<br>{2.17}  | 45<br>{1.77} | 30<br>{1.18} | 3.0<br>{0.12} | 1.7<br>{0.07} | 17.5<br>{0.69} | 2.0<br>{0.08} | 1.0<br>{0.04} | 22<br>{0.87} |
| 222K174  | 60<br>{2.36} | 35.1<br>{1.38} | 60<br>{2.36} | 15.7<br>{0.62} | 80<br>{3.15}  | 54<br>{2.13} | 35<br>{1.38} | 3.0<br>{0.12} | 1.7<br>{0.07} | 32.0<br>{1.26} | 3.3<br>{0.13} | 1.5<br>{0.06} | 22<br>{0.87} |
| 222K185  | 66<br>{2.60} | 44.5<br>{1.75} | 66<br>{2.60} | 16.8<br>{0.66} | 108<br>{4.25} | 68<br>{2.68} | 42<br>{1.65} | 3.0<br>{0.12} | 2.0<br>{0.08} | 48.0<br>{1.89} | 3.8<br>{0.15} | 2.0<br>{0.08} | 22<br>{0.87} |

This is a drilled variant \*  
Modified dimensions are shown thus:- #

Copyright (!)

The copyright in this drawing is the property of Tyco Electronics UK Ltd. The drawing is issued on the condition that it is not copied, reproduced or disclosed to a third party, either in whole or in part without the prior written consent of Tyco Electronics UK Ltd.

Drawn A.LILLEY. Checked

Issue 2

Date May 2008

Conforms to ISO Recommendations

Approval

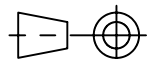
3rd Angle Projection

Design

MKTG.

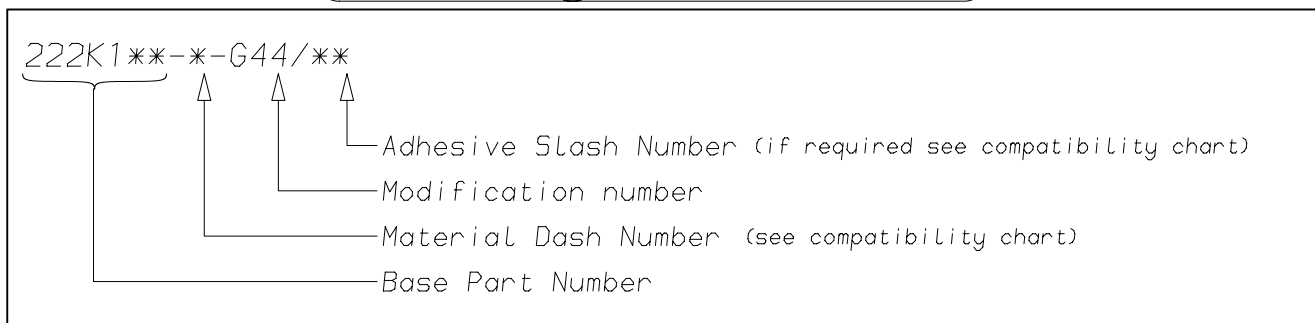
Tech.

Not to Scale



|                |          |  |                                      |
|----------------|----------|--|--------------------------------------|
| <b>Raychem</b> |          | <b>Specification<br/>Control Drawing</b> | Part Number<br>222K1**-*-G44 Issue 2 |
| Iss.           | Date     | E.C.R.<br>No.                            | Details of Change                    |
| 2              | May 2008 | CR06-HM-012                              | Imperial dimensions added            |

### (Ordering Information)



### (COMPATIBILITY CHART)

| Material Dash Number | Material Description            | SPEC Number | Coating Slash Number |
|----------------------|---------------------------------|-------------|----------------------|
| -3                   | POLYOLEFIN, SEMI-RIGID          | RT-301      | /42, /86, /180       |
| -4                   | POLYOLEFIN, FLEXIBLE            | RT-1304     | /42, /86, /180       |
| -25                  | ELASTOMER, FLUID RESISTANT      | RW-2070     | /42, /86, /225       |
| -130                 | POLYOLEFIN, COMMERCIAL FLEXIBLE | RW-2008     | /42                  |
|                      |                                 |             |                      |
|                      |                                 |             |                      |
|                      |                                 |             |                      |

### NOTES

- ① As supplied dimensions are for uncoated parts, when coating is added entry diameters will reduce by 1.5mm Max.

|  |   |
|--|---|
| Tyco Electronics UK Ltd.<br>Faraday Road,<br>Swindon, Wiltshire, SN3 5HH<br>England<br>Telephone: (01793) 528171 Fax: 572516 | Tyco Electronics Corporation<br>300, Constitution Drive,<br>Menlo Park, CA 94025<br>USA<br>Telephone (650) 361-3860 Fax: (650) 361-5579 |
| Cage Code K1010  | Cage Code 06090   |

单击下面可查看定价，库存，交付和生命周期等信息

[>>TE Connectivity\(泰科\)](#)