

4

3

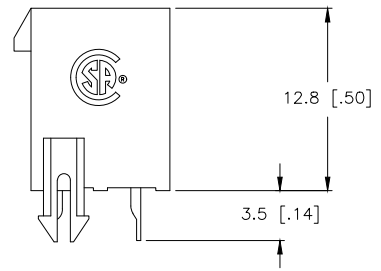
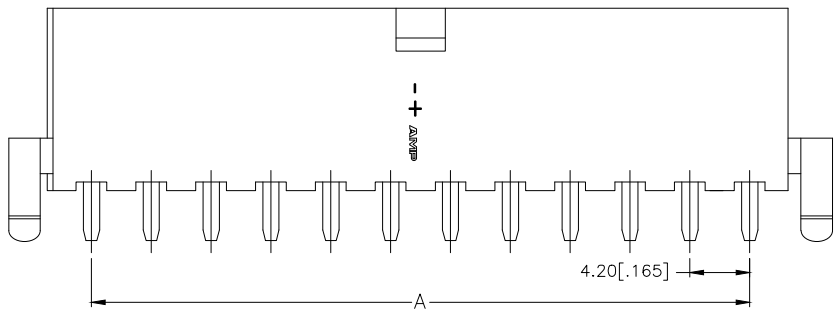
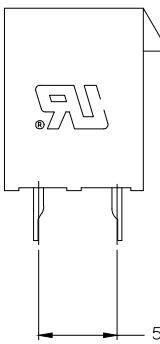
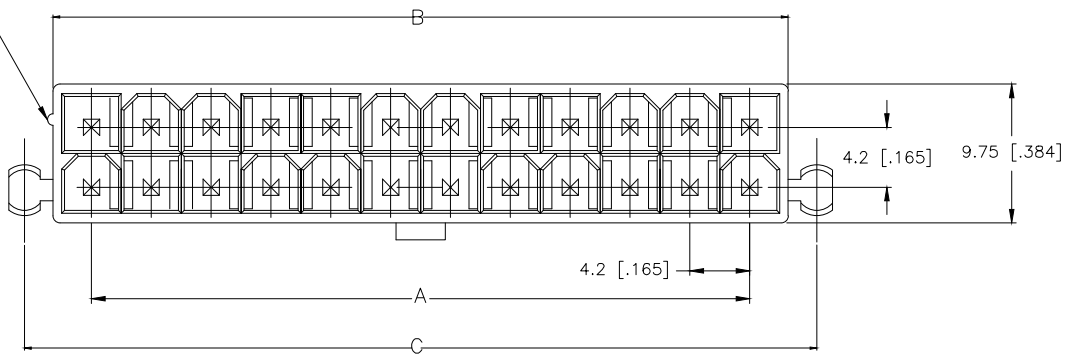
2

1

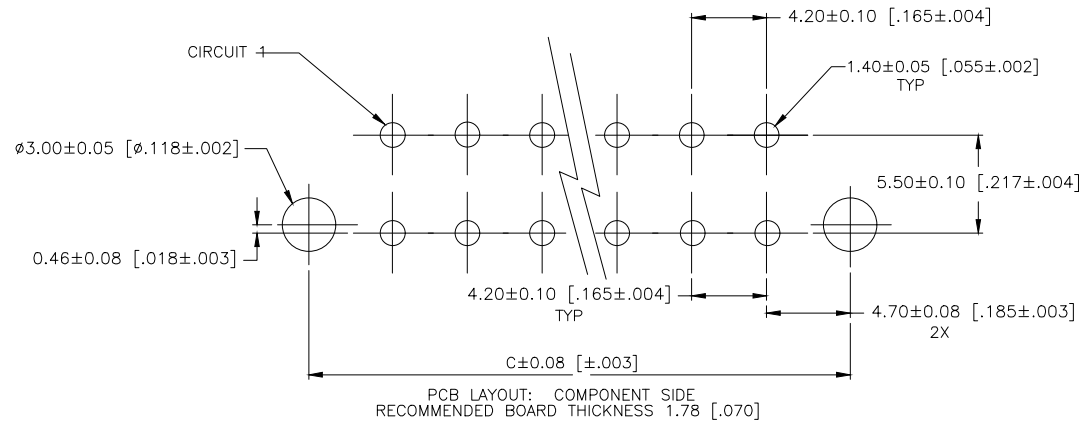
THIS DRAWING IS UNPUBLISHED. RELEASED FOR PUBLICATION. ALL RIGHTS RESERVED.

LOC		DIST		REVISIONS				
P	LTR	DESCRIPTION	DATE	DWN	APVD			
	B8	REVISED PER ECO-19-018165	29NOV2019	WH	DZ			

POSITION 1 IDENTIFICATION FEATURE



- 1 MATERIAL: HOUSING-NYLON, UL94V-0 (COLOR-NATURAL, COLOR OF PARTS MAY VARY) CONTACTS-0.25 [.010] THICK BRASS ALLOY.
- 2 CONTACT FINISH: 0.002032 [.000080] MIN BRIGHT TIN OVER 0.000381 [.000015] MIN NICKEL OVER ENTIRE CONTACT.
- 3 MATES WITH VAL-U-LOK(TM) RECEPTACLE HOUSINGS.
- 4 CONTACT FINISH: 0.000076 [.000030] MIN GOLD PLATE ON PIN MATING SURFACE, 0.003 [.00012] MIN TIN PLATE ON OTHER SURFACE, ALL OVER 0.00127 [.00005] MIN NICKEL BASE PLATE.




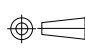
2-1586040-4 SHOWN

THIS DRAWING IS A CONTROLLED DOCUMENT.		DWN S. HOOVER 25-SEP-2002	<b>STE</b> TE Connectivity
		CHK D. COLEY 25-SEP-2002	
DIMENSIONS: mm [INCHES]		APVD D. COLEY 25-SEP-2002	NAME
TOLERANCES UNLESS OTHERWISE SPECIFIED:		PRODUCT SPEC	VERTICAL HEADER WITH PEGS, WITH DRAIN HOLES VAL-U-LOK(TM)
0 PLC ±	1 PLC ± 0.5 [.02]	108-2112	SIZE CAGE CODE DRAWING NO
2 PLC ± 0.25 [.010]	3 PLC ±	APPLICATION SPEC	A2 00779 ©=1586040
4 PLC ±	ANGLES ±	114-13172	RESTRICTED TO
MATERIAL	FINISH	WEIGHT	SCALE N/A SHEET 1 of 2 REV B8
1	SEE TABLE	CUSTOMER DRAWING	

THIS DRAWING IS UNPUBLISHED. RELEASED FOR PUBLICATION  
 © COPYRIGHT - By - ALL RIGHTS RESERVED.

LOC	DIST	REVISIONS					
CM	00	P	LTR	DESCRIPTION	DATE	DWN	APVD
		-		SEE SHEET 1	-	-	-

$\triangle 4$	24	46.2±0.25 [1.82±.01]	51.6 [2.03]	55.6 [2.19]	5-1586040-4
$\triangle 4$	22	42.0±0.25 [1.65±.01]	47.4 [1.87]	51.4 [2.02]	5-1586040-2
$\triangle 4$	20	37.8±0.25 [1.49±.01]	43.2 [1.70]	47.2 [1.86]	5-1586040-0
$\triangle 4$	18	33.6±0.25 [1.32±.01]	39.0 [1.54]	43.0 [1.69]	4-1586040-8
$\triangle 4$	16	29.4±0.25 [1.16±.01]	34.8 [1.37]	38.8 [1.53]	4-1586040-6
$\triangle 4$	14	25.2±0.25 [.99±.01]	30.6 [1.21]	34.6 [1.36]	4-1586040-4
$\triangle 4$	12	21.0±0.25 [.83±.01]	26.4 [1.04]	30.4 [1.20]	4-1586040-2
$\triangle 4$	10	16.8±0.13 [.66±.005]	22.2 [.87]	26.2 [1.03]	4-1586040-0
$\triangle 4$	8	12.6±0.13 [.50±.005]	18.0 [.71]	22.0 [1.03]	3-1586040-8
$\triangle 4$	6	8.4±0.13 [.33±.005]	13.8 [.54]	17.8 [.70]	3-1586040-6
$\triangle 4$	2		5.4 [.21]	9.4 [.37]	3-1586040-2
$\triangle 4$	4	4.2±0.13 [.17±.005]	9.6 [.38]	13.6 [.54]	3-1586040-4
$\triangle 2$	24	46.2±0.25 [1.82±.01]	51.6 [2.03]	55.6 [2.19]	2-1586040-4
$\triangle 2$	22	42.0±0.25 [1.65±.01]	47.4 [1.87]	51.4 [2.02]	2-1586040-2
$\triangle 2$	20	37.8±0.25 [1.49±.01]	43.2 [1.70]	47.2 [1.86]	2-1586040-0
$\triangle 2$	18	33.6±0.25 [1.32±.01]	39.0 [1.54]	43.0 [1.69]	1-1586040-8
$\triangle 2$	16	29.4±0.25 [1.16±.01]	34.8 [1.37]	38.8 [1.53]	1-1586040-6
$\triangle 2$	14	25.2±0.25 [.99±.01]	30.6 [1.21]	34.6 [1.36]	1-1586040-4
$\triangle 2$	12	21.0±0.25 [.83±.01]	26.4 [1.04]	30.4 [1.20]	1-1586040-2
$\triangle 2$	10	16.8±0.13 [.66±.005]	22.2 [.87]	26.2 [1.03]	1-1586040-0
$\triangle 2$	8	12.6±0.13 [.50±.005]	18.0 [.71]	22.0 [.87]	1586040-8
$\triangle 2$	6	8.4±0.13 [.33±.005]	13.8 [.54]	17.8 [.70]	1586040-6
$\triangle 2$	4	4.2±0.13 [.17±.005]	9.6 [.38]	13.6 [.54]	1586040-4
$\triangle 2$	2		5.4 [.21]	9.4 [.37]	1586040-2
FINISH	POS	A	B±0.25[.01]	C±0.38[.015]	PART NUMBER

THIS DRAWING IS A CONTROLLED DOCUMENT.		DWN S. HOOVER 25-SEP-2002	 TE Connectivity			
DIMENSIONS: mm [INCHES]		CHK D. COLEY 25-SEP-2002				
		APVD D. COLEY 25-SEP-2002	NAME			
TOLERANCES UNLESS OTHERWISE SPECIFIED: 0 PLC ± 1 PLC ± 0.5 [.02] 2 PLC ± 0.25 [.010] 3 PLC ± 4 PLC ± ANGLES ±		PRODUCT SPEC 108-2112 APPLICATION SPEC 114-13172		RESTRICTED TO		
MATERIAL	FINISH	WEIGHT	SIZE	CAGE CODE	DRAWING NO	REV
$\triangle 1$	SEE TABLE	-	A2	00779	©=1586040	B8
CUSTOMER DRAWING			SCALE	N/A	SHEET	2 of 2

单击下面可查看定价，库存，交付和生命周期等信息

[>>TE Connectivity\(泰科\)](#)