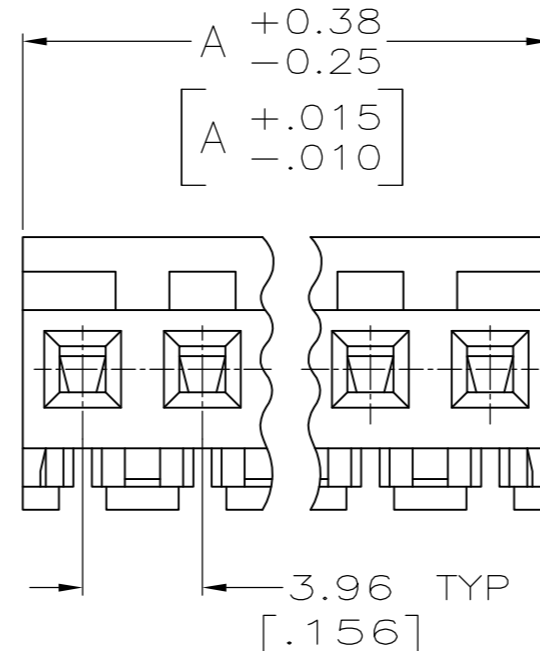
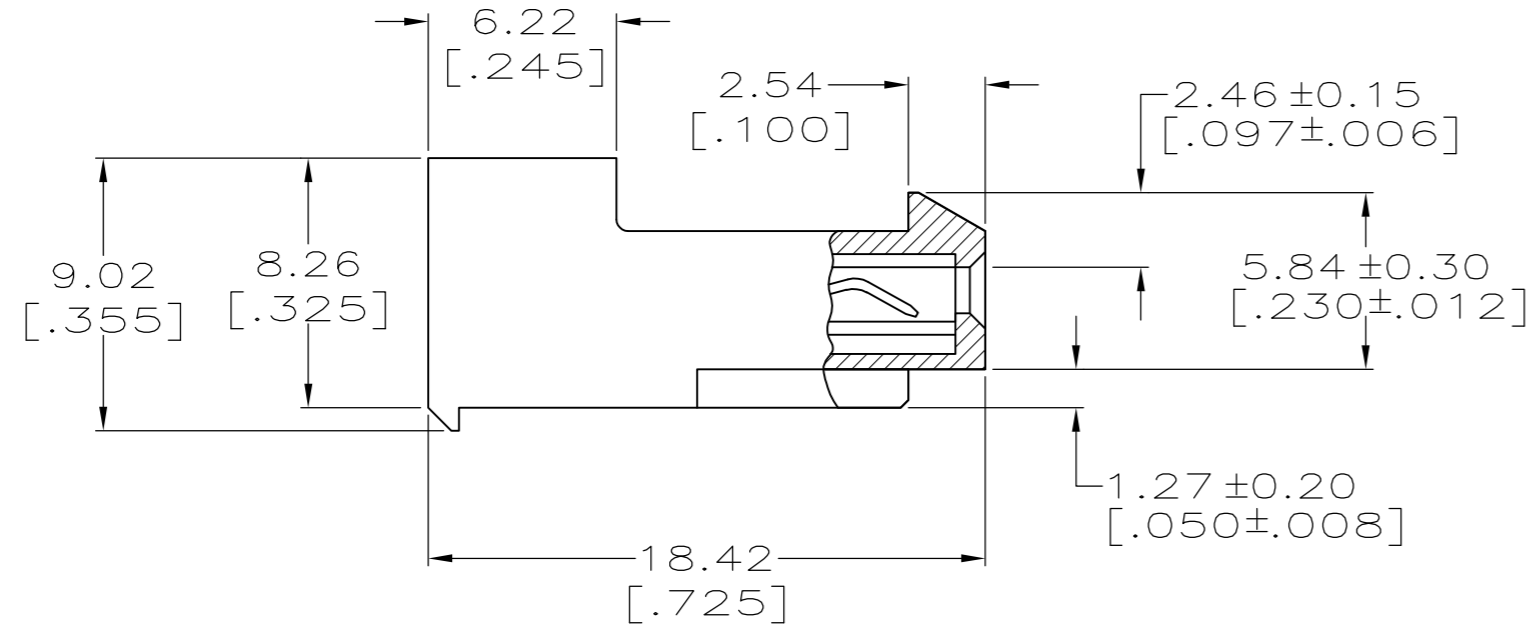
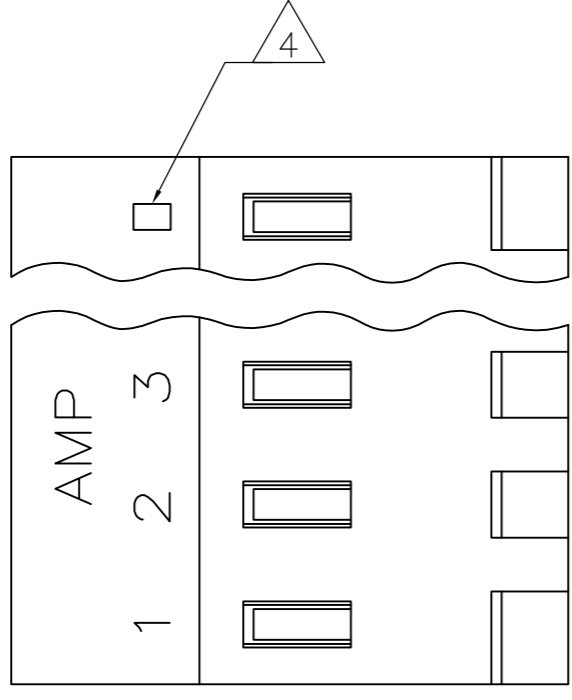


THIS DRAWING IS UNPUBLISHED. RELEASED FOR PUBLICATION
 © COPYRIGHT - By - TE CONNECTIVITY ALL RIGHTS RESERVED.

LOC	DIST	REVISIONS					
CM	0	P	LTR	DESCRIPTION	DATE	DWN	APVD
		R		REVISED PER ECR-20-000820	27MAY2020	PC	SW



FINISH	DIM A	NO. OF CIRCUITS	PART NO.
TIN	95.10 [3.744]	24	5-641149-4
TIN	91.14 [3.588]	23	5-641149-3
TIN	87.17 [3.432]	22	5-641149-2
TIN	83.21 [3.276]	21	5-641149-1
TIN	79.25 [3.120]	20	5-641149-0
TIN	75.29 [2.964]	19	4-641149-9
TIN	71.32 [2.808]	18	4-641149-8
TIN	67.36 [2.652]	17	4-641149-7
TIN	63.40 [2.496]	16	4-641149-6
TIN	59.44 [2.340]	15	4-641149-5
TIN	55.47 [2.184]	14	4-641149-4
TIN	51.51 [2.028]	13	4-641149-3
TIN	47.55 [1.872]	12	4-641149-2
TIN	43.59 [1.716]	11	4-641149-1
TIN	39.62 [1.560]	10	4-641149-0
TIN	35.66 [1.404]	9	3-641149-9
TIN	31.70 [1.248]	8	3-641149-8
TIN	27.74 [1.092]	7	3-641149-7
TIN	23.77 [.936]	6	3-641149-6
TIN	19.81 [.780]	5	3-641149-5
TIN	15.85 [.624]	4	3-641149-4
TIN	11.89 [.468]	3	3-641149-3
TIN	7.92 [.312]	2	3-641149-2
TIN	95.10 [3.744]	24	2-641149-4
TIN	91.14 [3.588]	23	2-641149-3
TIN	87.17 [3.432]	22	2-641149-2
TIN	83.21 [3.276]	21	2-641149-1
TIN	79.25 [3.120]	20	2-641149-0
TIN	75.29 [2.964]	19	1-641149-9
TIN	71.32 [2.808]	18	1-641149-8
TIN	67.36 [2.652]	17	1-641149-7
TIN	63.40 [2.496]	16	1-641149-6
TIN	59.44 [2.340]	15	1-641149-5
TIN	55.47 [2.184]	14	1-641149-4
TIN	51.51 [2.028]	13	1-641149-3
TIN	47.55 [1.872]	12	1-641149-2
TIN	43.59 [1.716]	11	1-641149-1
TIN	39.62 [1.560]	10	1-641149-0
TIN	35.66 [1.404]	9	641149-9
TIN	31.70 [1.248]	8	641149-8
TIN	27.74 [1.092]	7	641149-7
TIN	23.77 [.936]	6	641149-6
TIN	19.81 [.780]	5	641149-5
TIN	15.85 [.624]	4	641149-4
TIN	11.89 [.468]	3	641149-3
TIN	7.92 [.312]	2	641149-2

1 MATERIAL:
 CONNECTOR - NYLON UL94V-2 (YELLOW)
 CONTACTS - 0.30[.012] THICK COPPER ALLOY.
 PLATING - 0.00038[.000015] GOLD THK OR 0.00008[.000003] MIN THK GOLD FLASH OVER 0.00030[.000012] THK PALLADIUM NICKEL, PER TE CONNECTIVITY'S DISCRETION, IN CONTACT AREA. 0.00203[.000080] MIN THICKNESS MATTE TIN IN SLOT AREA FOR 641149-2 THRU 2-641149-4 OR MATTE WHISKER MITIGATED TIN IN SLOT AREA FOR 3-641149-2 THRU 5-641149-4 OVER NICKEL UNDERPLATE.

- 2 CONTACTS ACCEPT 20 AWG WIRE WITH 2.41[.095] MAX INSULATION DIAMETER.
- 3 CONTACTS MUST ACCEPT 1.14±0.03[.045±.001] SQUARE POST AND REMAIN LOCKED IN POSITION.
- 4 IDENTIFICATION NUMBER FOR LAST CIRCUIT MAY NOT APPEAR ON ALL ASSEMBLIES.
- 5 DIMENSIONS IN BRACKETS ARE IN INCHES.
- 6 HOUSING FEATURES ARE: CLOSED END WITH LOCKING RAMP.
- 7 NOTE DELETED.
- 8 NOTE DELETED.
- 9 OBSOLETE PARTS: OBSOLETE CIS STREAMLINING PER D.RENAUD/D.SINISI.

SUPERSEDED	TIN-LEAD	95.10 [3.744]	24	2-641149-4
		91.14 [3.588]	23	2-641149-3
		87.17 [3.432]	22	2-641149-2
		83.21 [3.276]	21	2-641149-1
		79.25 [3.120]	20	2-641149-0
		75.29 [2.964]	19	1-641149-9
		71.32 [2.808]	18	1-641149-8
		67.36 [2.652]	17	1-641149-7
		63.40 [2.496]	16	1-641149-6
		59.44 [2.340]	15	1-641149-5
55.47 [2.184]	14	1-641149-4		
51.51 [2.028]	13	1-641149-3		
47.55 [1.872]	12	1-641149-2		
43.59 [1.716]	11	1-641149-1		
39.62 [1.560]	10	1-641149-0		
35.66 [1.404]	9	641149-9		
31.70 [1.248]	8	641149-8		
27.74 [1.092]	7	641149-7		
23.77 [.936]	6	641149-6		
19.81 [.780]	5	641149-5		
15.85 [.624]	4	641149-4		
11.89 [.468]	3	641149-3		
7.92 [.312]	2	641149-2		

THIS DRAWING IS A CONTROLLED DOCUMENT. DWN B. LEWIS 2-12-91
 CHK R. SWING 2-12-91
 APVD -
 PRODUCT SPEC 108-1051
 APPLICATION SPEC 114-1020
 MATERIAL 1
 FINISH -
 WEIGHT -
 CUSTOMER DRAWING

TE Connectivity
 MTA-156 CONNECTOR ASSEMBLY, 20 AWG, STANDARD
 SIZE A2 CAGE CODE 00779 DRAWING NO. 641149
 RESTRICTED TO -
 SCALE 4:1 SHEET 1 OF 1 REV R

单击下面可查看定价，库存，交付和生命周期等信息

[>>TE Connectivity\(泰科\)](#)