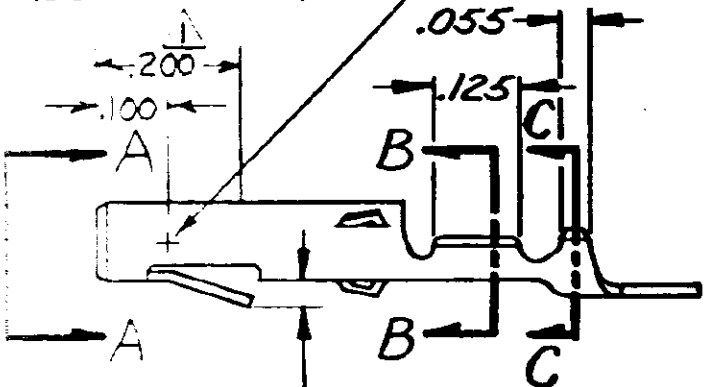


.078/.081 DIA.



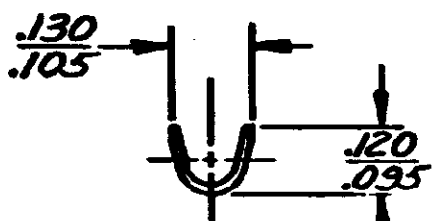
VIEW A-A

POINT OF MEASUREMENT
INSIDE OF RECEPTACLE



SECT. B-B

.020 MIN.



SECT. C-C

PART NO.	MATL & FINISH
350078-1	BRASS-PRETIN
350078-4	PH. BRZ.-PRETIN
350078-5	BRASS-

.000030 THK. GOLD OVER NICKEL ON INSIDE OF RECEPT. + WIRE BARREL; REMAINDER OF CONTACT IS NICKEL PLATED.

				CUSTOMER COPY REFERENCE ONLY			
				MATERIAL AND FINISH		TE Connectivity	
				SEE-TABLE			
				CLASS		— # —	
				WIRE — RANGE — INSULATION		TYPE	
				30-22 AWG .040-.075		— # —	
				TOLERANCE EXCEPT AS NOTED		LOC	
				± .015 ± 1" 0'		CM A	
				NO		350078	
				REV		N1	
REVISION RECORD				NAME			
N1 REVISED PER ECO-11-005294 RK 14 APR 11 DATE H. E. TAVELIS 4/21				MATE-N-LOK SOCKET			

单击下面可查看定价，库存，交付和生命周期等信息

[>>TE Connectivity\(泰科\)](#)