

4

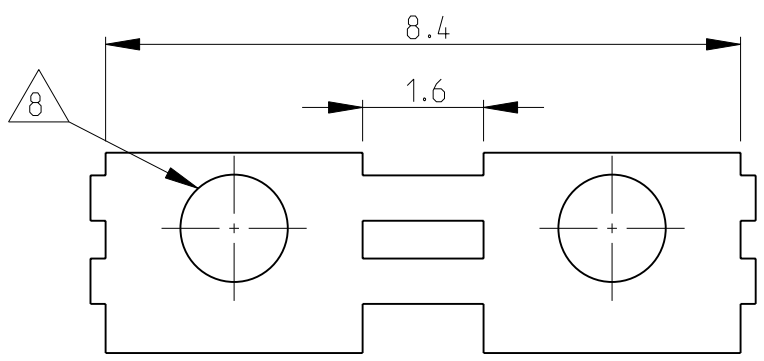
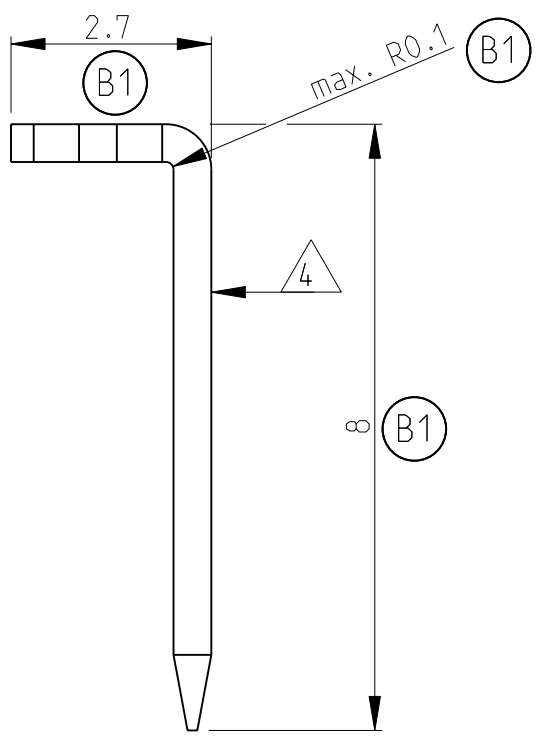
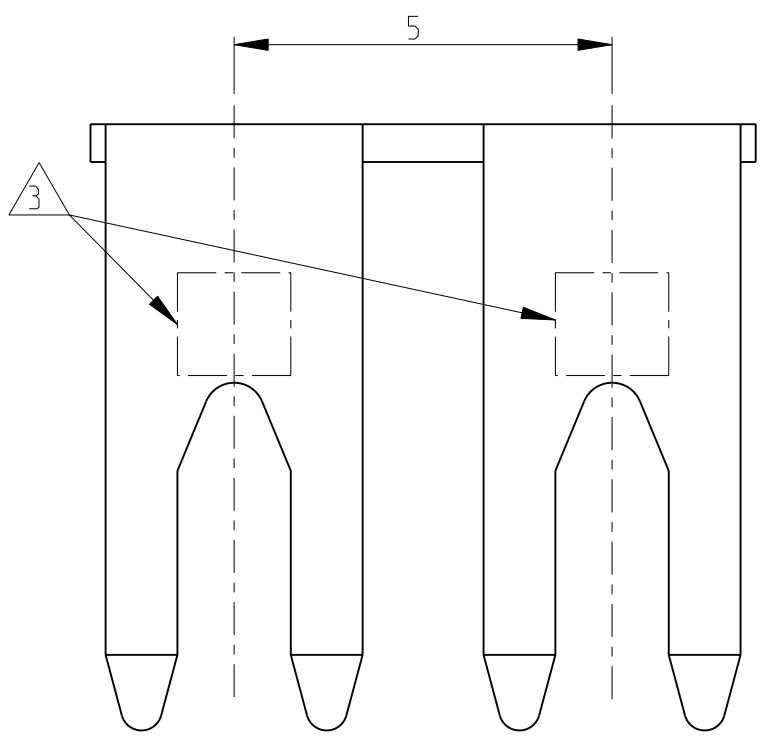
3

2

1

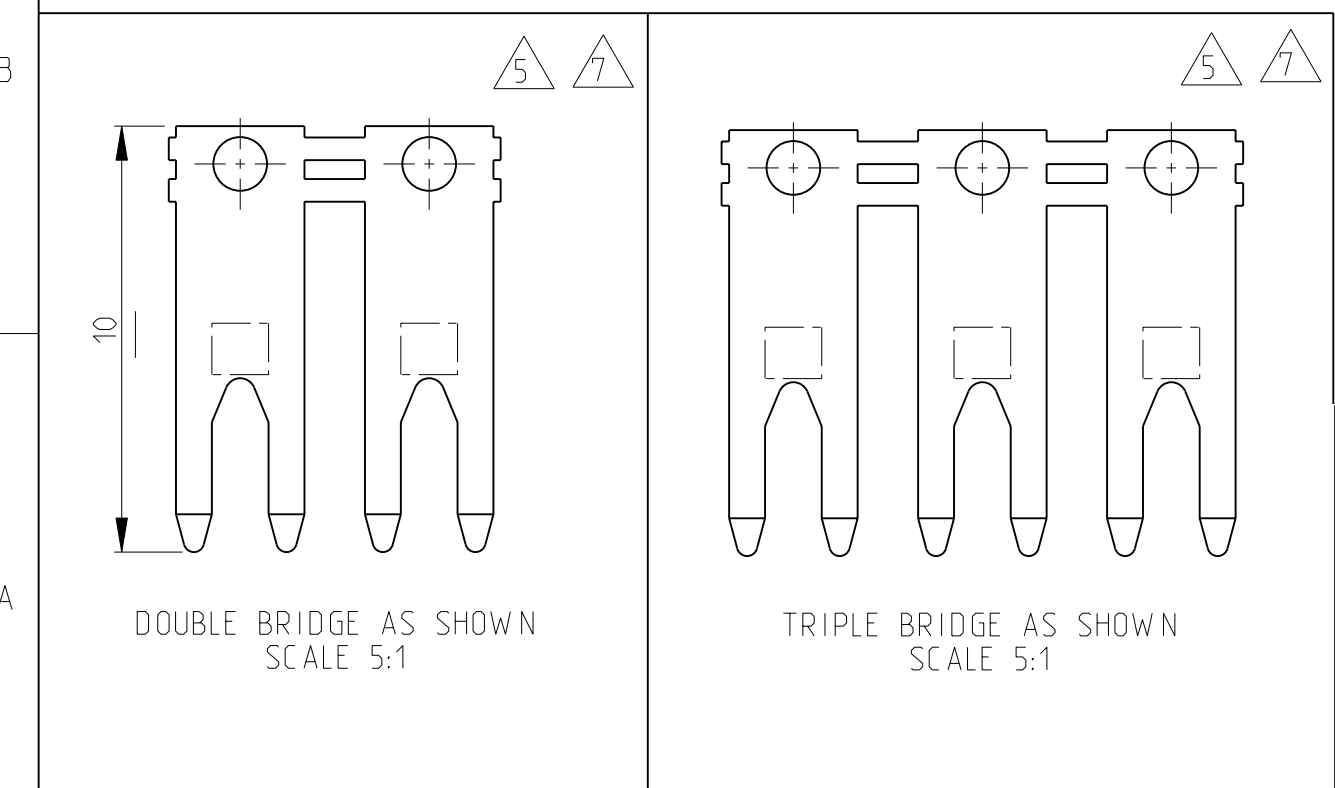
THIS DRAWING IS UNPUBLISHED. RELEASED FOR PUBLICATION 2007  
 © COPYRIGHT 2007 ALL RIGHTS RESERVED.

LOC	DIST	REVISIONS					
		P	LTR	DESCRIPTION	DATE	DWN	APVD
A1	-		A	NEW DRAWN	07AUG2007	PK	TG
			A1	NOTE 7 AND OPTION HOLE (WITH/WITHOUT) ADDED	02OCT2007	Ba	MB
			B1	BENDING RADII CHANGED TO MAX. R0.1	09NOV2009	Ba	RRP
			B2	ECR-10-026537	08AUG11	KK	HMR



Bemerkungen:  
NOTES:

- Material Stärke: 0.5mm  
MATERIAL THICKNESS: 0.5mm
- Werkzeugvorschub : 5mm  
DIE FEED : 5mm
- TE Markenzeichen  
TE TRADEMARK
- Markenzeichen auf dieser Seite  
TRADE MARK ON THIS FACE
- Kontakte werden beim Kunden gebogen  
CONTACTS WILL BE BENT AT CUSTOMER END
- Biegebereich ohne Beschädigung oder Rissildung  
NO TOOLING MARKS OR FRACTURES ALONG BEND LINE
- Die Bruecken werden im Applicator gefertigt:  
2 Einzelkontakte erzeugen 1 Doppelbruecke.  
3 Einzelkontakte erzeugen 1 Dreifach Bruecke etc.  
THE BRIDGES SHALL FINALIZED BY APPLICATOR:  
2 SINGLE CONTACTS GENERATE A DOUBLE BRIDGE.  
3 SINGLE CONTACTS GENERATE A TRIPPLE BRIDGE, ETC.



OBSELETE	PRE TINNED	WITHOUT	Brass	<del>4-1987199-1</del>
	PRE TINNED	WITH	Brass	0-1987199-1
	FINISH	APPL. HOLE	MATERIAL	PART NO

THIS DRAWING IS A CONTROLLED DOCUMENT.

DWN	07AUG2007	 TE Connectivity	NAME	Bridge contact								
CHK	07AUG2007			PRODUCT SPEC	-							
APVD	07AUG2007				APPLICATION SPEC	-						
				WEIGHT		-	SIZE	A3	CAGE CODE	00779	DRAWING NO	1987199
DIMENSIONS:	mm	TOLERANCES UNLESS OTHERWISE SPECIFIED:	0 PLC ± 1 PLC ± } ±0.1 2 PLC ± 3 PLC ± 4 PLC ± ANGLES ± 0.5° FINISH SEE TABLE									
MATERIAL	SEE TABLE	FINISH	SEE TABLE	CUSTOMER DRAWING SCALE 5:1 SHEET 1 OF 1 REV B2								

单击下面可查看定价，库存，交付和生命周期等信息

[>>TE Connectivity\(泰科\)](#)