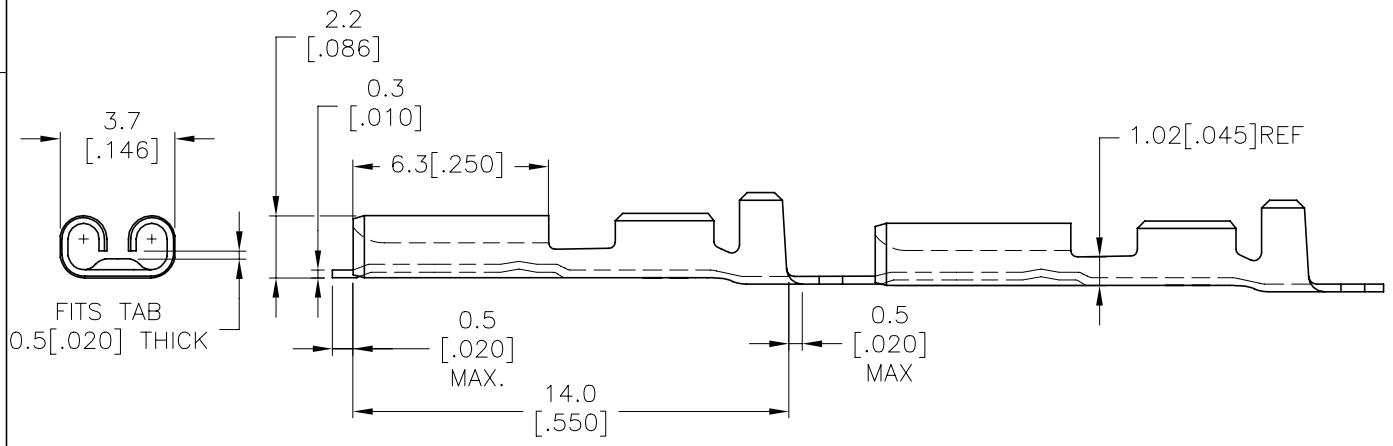
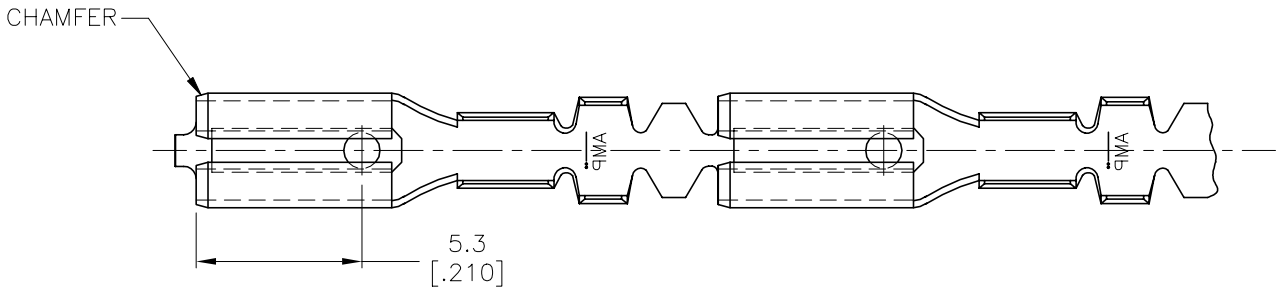


THIS DRAWING IS UNPUBLISHED. RELEASED FOR PUBLICATION
 © COPYRIGHT - By - ALL RIGHTS RESERVED.

REVISIONS				
P	LTR	DESCRIPTION	DATE	DWN APVD
	G	REVISED PER ECR-21-100133	10FEB2021	BDA DH

- △ 1 SPLICE FREE, FOR AMP_O_MATOR.
- △ 2 REELED WITH PAPER LAYER.
- △ 3 OBSOLETE PARTS: OBSOLETE CIS STREAMLINING PER D.RENAUD/D.SINISI



TIN	BRASS	△ 2	6-160316-4
TIN-LEAD	PHOSPHORBRONZE		6-160316-3
TIN-LEAD	BRASS	△ 3	6-160316-2
PRE-TIN HOT DIP	PHOSPHORBRONZE	△ 3	6-160316-0
TIN	BRASS	△ 1	5-160316-9
NONE	BRASS	△ 1	5-160316-8
GOLD	PHOSPHORBRONZE		5-160316-7
TIN	PHOSPHORBRONZE	△ 3	5-160316-6
NONE	PHOSPHORBRONZE		5-160316-5
GOLD	BRASS	△ 3	5-160316-4
SILVER	BRASS		5-160316-3
TIN	BRASS		5-160316-2
NONE	BRASS		5-160316-1
FINISH	MATERIAL		PART NUMBER

THIS DRAWING IS A CONTROLLED DOCUMENT. DWN 11-04-94
 D.KESSLER
 CHK P.BEIJNON
 APVD L.V. SOEST

TE TE Connectivity

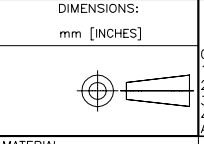
NAME .110 SRS FASTON RECEPTACLE

PRODUCT SPEC
 APPLICATION SPEC
 WEIGHT

SIZE A3 CAGE CODE 00779 DRAWING NO C=160316 RESTRICTED TO

CUSTOMER DRAWING SCALE 6:1 SHEET 1 OF 1 REV G

WIRE RANGE : 0.3-0.56mm ² (22-20 AWG)	INSUL-RANGE : ø 1.0-2.0 (ø .050-.080)
--------------------------------------------------------	---------------------------------------------



DIMENSIONS:	TOLERANCES UNLESS OTHERWISE SPECIFIED:
mm [INCHES]	
0 PLC	± 1.0
1 PLC	± 0.5
2 PLC	± 0.2
3 PLC	± -
4 PLC	± -
ANGLES	± 1°

单击下面可查看定价，库存，交付和生命周期等信息

[>>TE Connectivity\(泰科\)](#)