

4

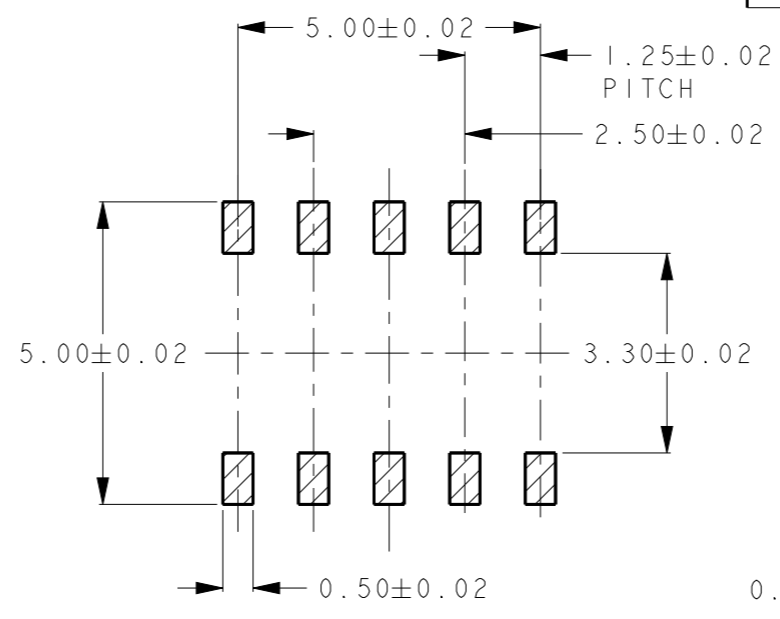
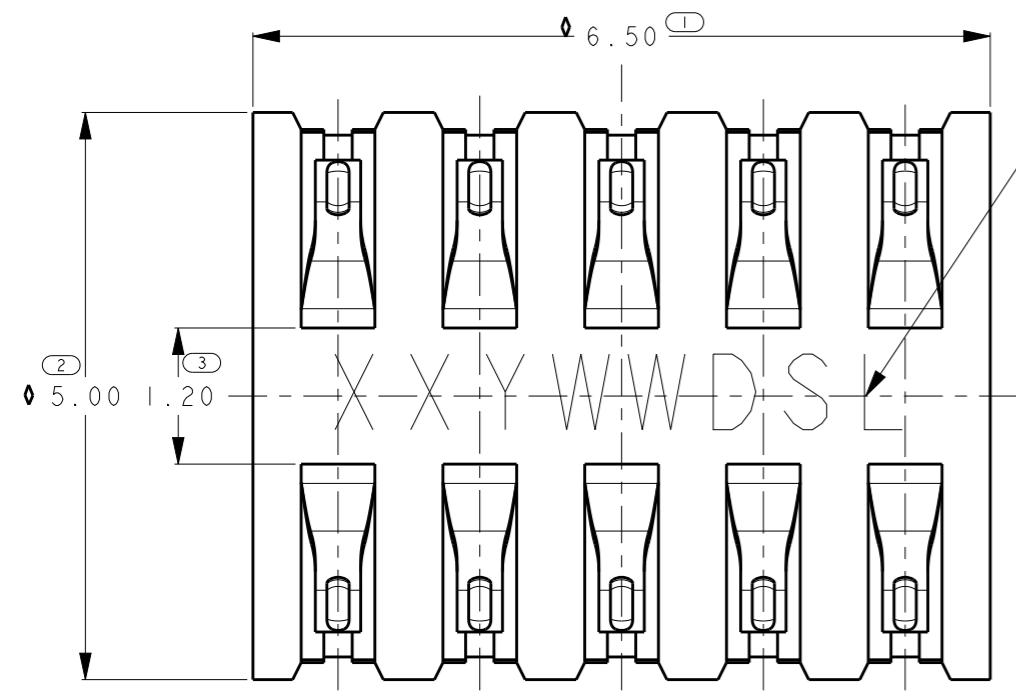
3

2

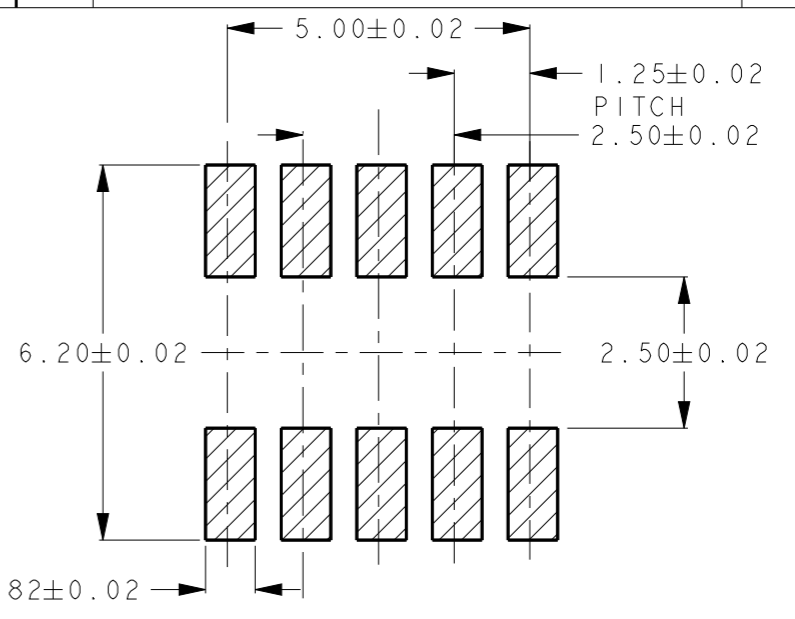
1

THIS DRAWING IS UNPUBLISHED. RELEASED FOR PUBLICATION 20
 © COPYRIGHT 20 ALL RIGHTS RESERVED.

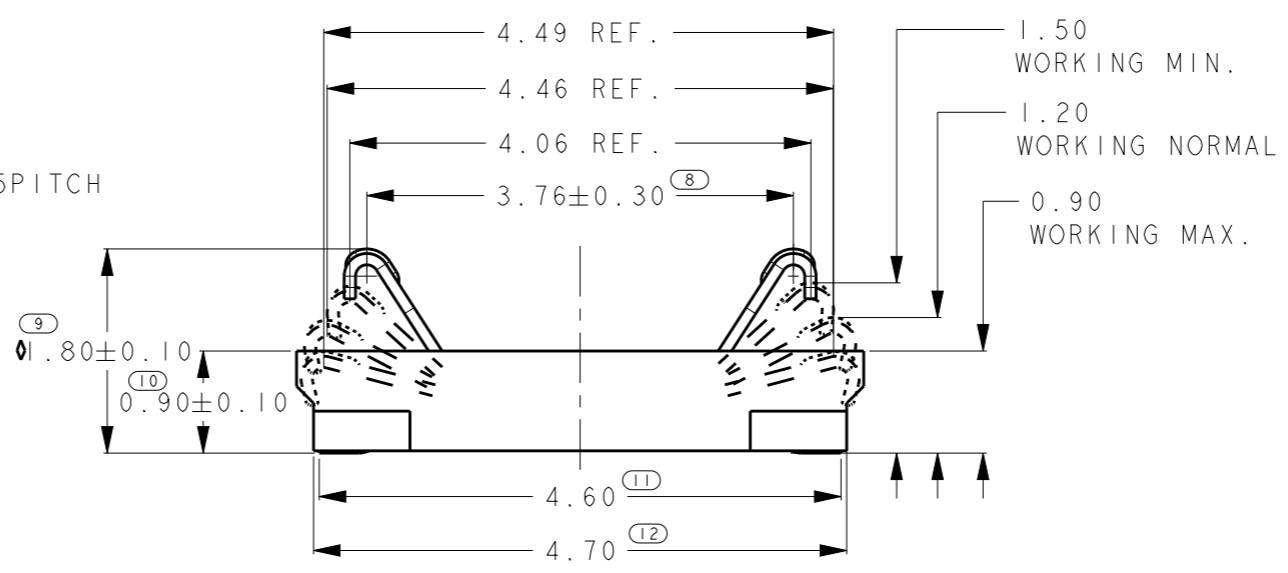
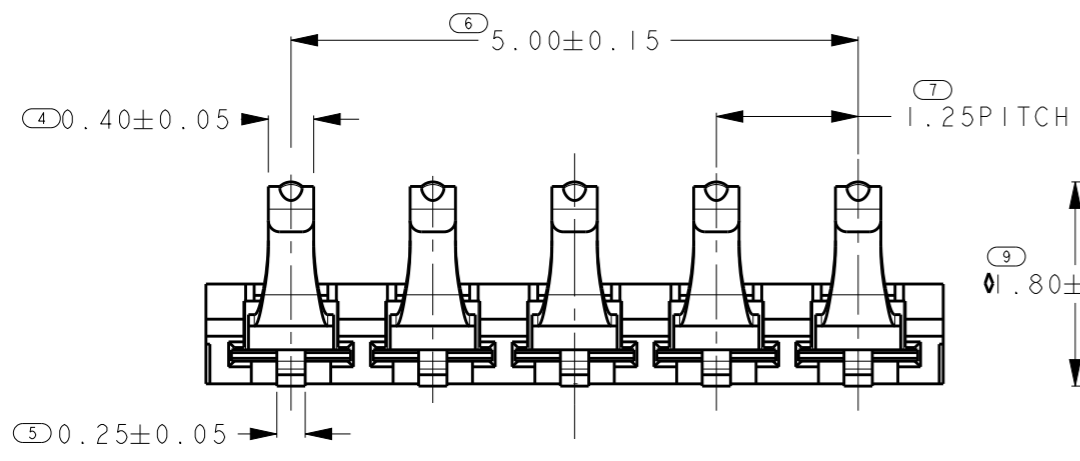
LOC	DIST	REVISIONS				
P	LTR	DESCRIPTION	DATE	DWN	APVD	
ES		A	INITIAL	21MAR2013	R.W S.Y	



SCALE 8:1
RECOMMEND SOLDERING PWB LAYOUT



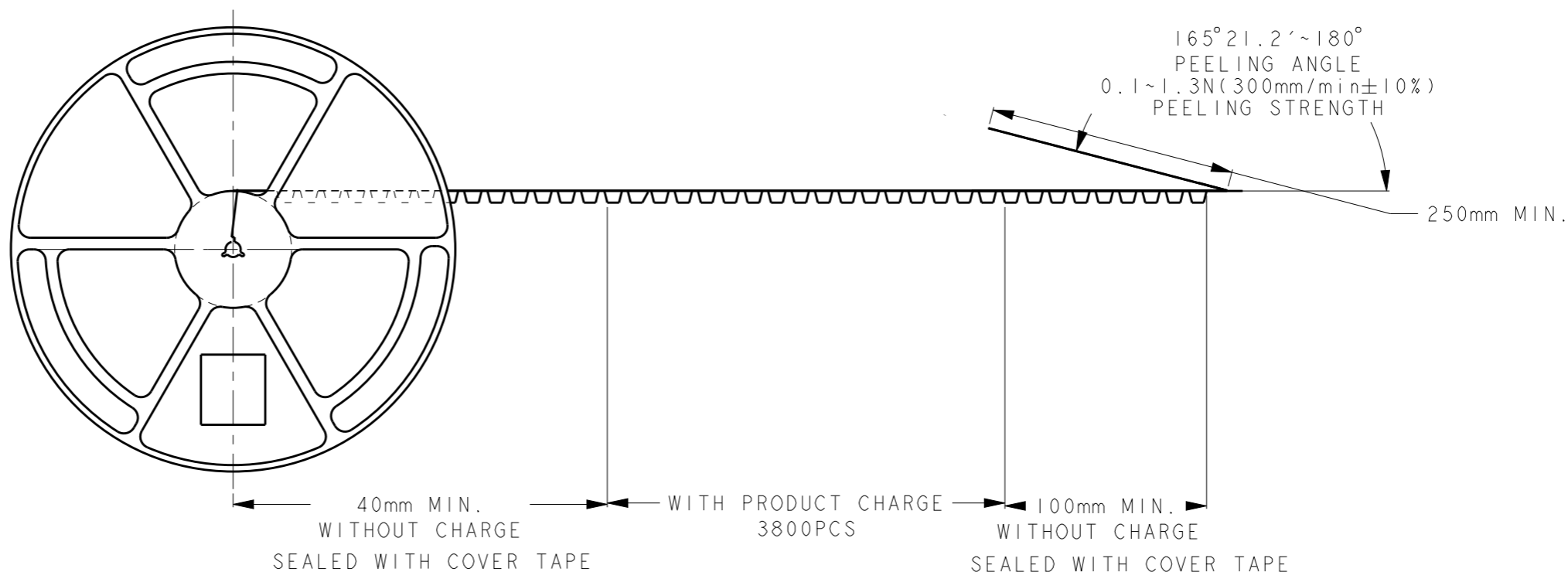
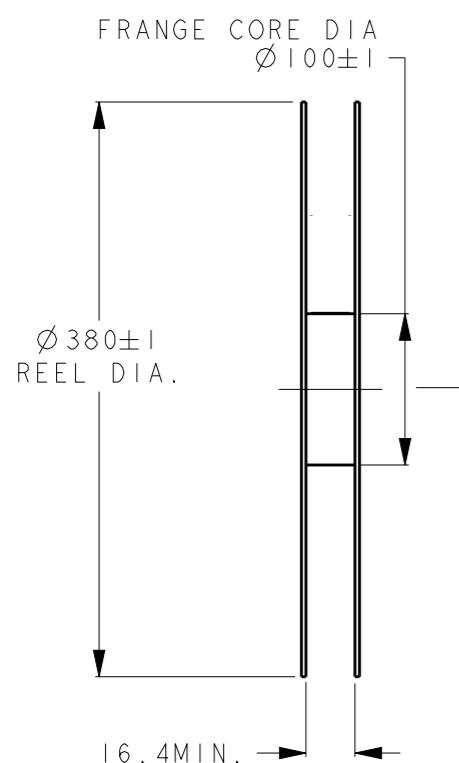
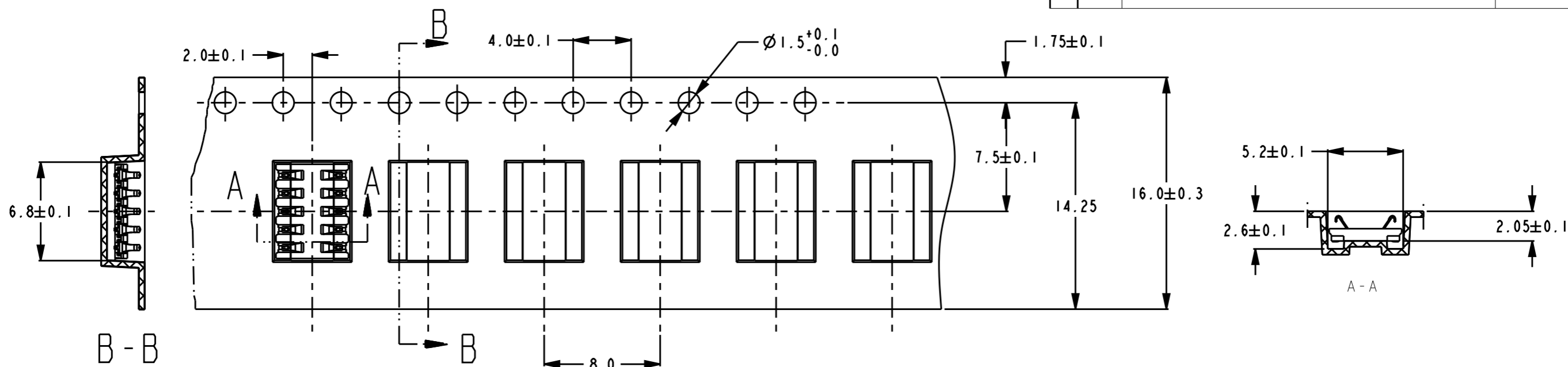
SCALE 8:1
RECOMMEND MATING LAYOUT



NOTES:
 1. TE PART NUMBER: 2199055-2
 MATERIAL
 TERMINAL: COPPER ALLOY, THICKNESS 0.10mm.
 HOUSING: HIGH TEMPERATURE THERMO PLASTIC
 UL94V-0 BLACK
 2. FINISH
 TERMINAL: 0.10-0.2 um GOLD PLATING ON CONTACT AREA,
 1.25 um MIN. NICKLE UNDER PLATING,
 GOLD FLASH PLATING ON SOLDERING AREA.
 3. COPLANARITY: 0.08 MAX. AMANG ALL SOLDER TAILS.
 PACKAGING: TAPE & REEL.
 DATE CODE: "XXYWDSL"
 XX = VERSION NO. FOR EXAMPLE: P1, V1, A1
 P = PROTO TOOL; V = PRODUCTION TOOL; A = MASS APPROVED.
 YWWD = PRODUCTION DATE (YEAR, WEEK, DAY).
 S = SHIFT (D=DYA, N=NIGHT); L = LINE NUMBER.

THIS DRAWING IS A CONTROLLED DOCUMENT.		DWN	21MAR2013	STE TE Connectivity
		CHK	RAY WANG	
		APVD	HE WENKE	NAME ONE PIECE BtoB CONNECTOR 10 PINS, HI.20, TWO ROWS
		PRODUCT SPEC	STEVEN YAO	
		APPLICATION SPEC	108-115045	SIZE A300779
		WEIGHT	0.0723	
MATERIAL		FINISH	CUSTOMER DRAWING	DRAWING NO G-2199055
DIMENSIONS: mm		TOLERANCES UNLESS OTHERWISE SPECIFIED: ±0.20	RESTRICTED TO	
<ul style="list-style-type: none"> 0 PLC ± 1 PLC ± 2 PLC ± 3 PLC ± 4 PLC ± ANGLES ±5° 		SCALE 20:1 SHEET 1 OF 2 REV A		

P	LTR	DESCRIPTION	DATE	DWN	APVD



- NOTES:
1. TAPE MATERIAL: P.S 0.4mm THICKNESS, COLOR: NATURAL.
 2. QUANTITY PER REEL: 3800PCS.

THIS DRAWING IS A CONTROLLED DOCUMENT.		DWN RAY WANG 21MAR2013	TE Connectivity													
DIMENSIONS: mm		CHK WENKE HE 21MAR2013														
TOLERANCES UNLESS OTHERWISE SPECIFIED: ±0.20		APVD STEVEN YAO 21MAR2013	NAME ONE PIECE BtoB CONNECTOR 10 PINS, HI.20, 2 ROWS													
<table border="1"> <tr><td>0 PLC</td><td>±</td></tr> <tr><td>1 PLC</td><td>±0.50</td></tr> <tr><td>2 PLC</td><td>±0.20</td></tr> <tr><td>3 PLC</td><td>±</td></tr> <tr><td>4 PLC</td><td>±</td></tr> <tr><td>ANGLES</td><td>±</td></tr> </table>		0 PLC	±	1 PLC	±0.50	2 PLC	±0.20	3 PLC	±	4 PLC	±	ANGLES	±	PRODUCT SPEC -	SIZE A300779	CAGE CODE C=2199055
0 PLC	±															
1 PLC	±0.50															
2 PLC	±0.20															
3 PLC	±															
4 PLC	±															
ANGLES	±															
MATERIAL -		FINISH -	APPLICATION SPEC -	DRAWING NO -												
		WEIGHT -	RESTRICTED TO -													
		Customer Drawing	SCALE 3:1	SHEET 2 OF 2 REV A												

单击下面可查看定价，库存，交付和生命周期等信息

[>>TE Connectivity\(泰科\)](#)