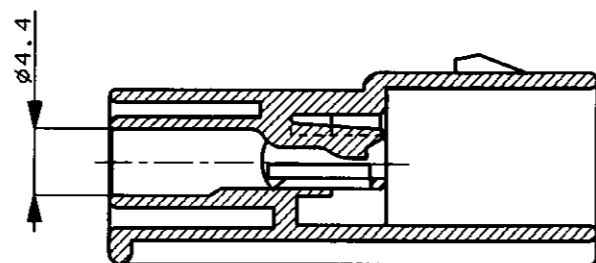
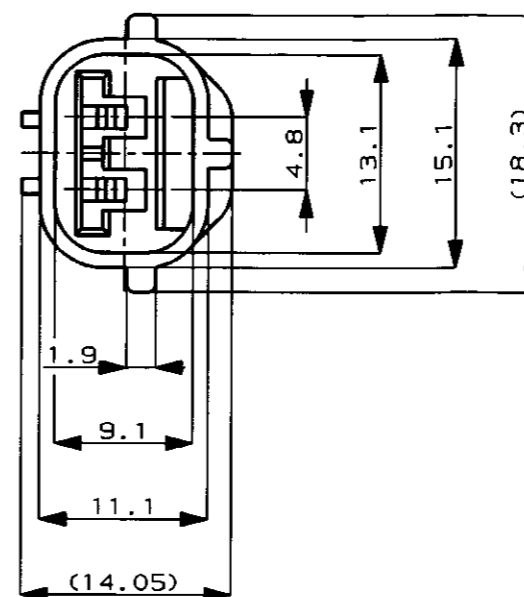
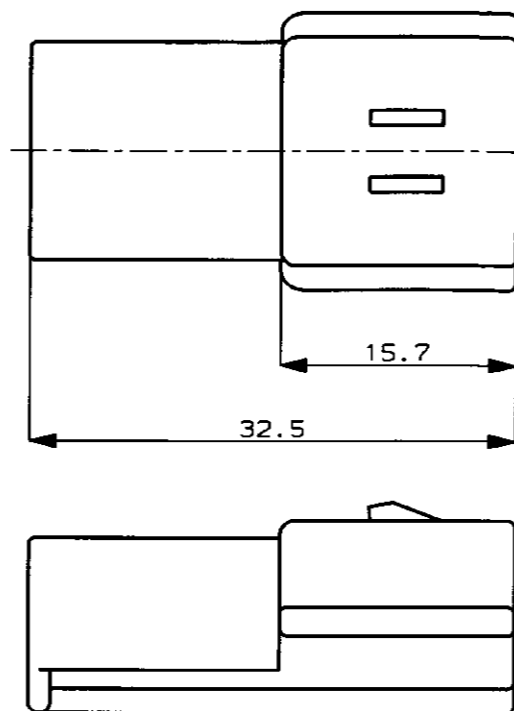
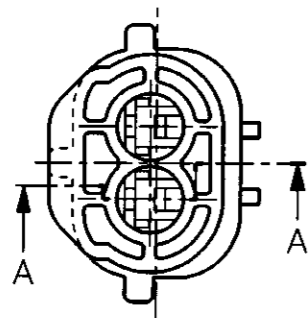


NUMBER C-174354

3rd ANGLE PROJECTION

METRIC



SECTION 断面 A-A

注 ;

- 1 かん合相手型番 : 174352, 173090
- 2 本品はダブルロックプレート P/N 174355 を装着して使用する

NOTE ;

- 1 FOR PLUG HOUSING (P/N174352, 173090)
- 2 THIS PART MUST BE USED WITH DOUBLE LOCK PLATE (P/N174355)

DIMENSIONS IN MILLIMETERS. DO NOT SCALE PRINT

PRINT DIST

| | | | |
|-----------|---------------|-----------------------------------|----------|
| 灰 (GRAY) | PBT | 2Pos. CAP HOUSING 2極 キャップハウジング | 174354-6 |
| 黒 (BLACK) | PBT | 2Pos. CAP HOUSING 2極 キャップハウジング | 174354-2 |
| 色 (COLOR) | 材料 (MATERIAL) | 名称 (NAME) | 型番 (P/N) |

© 19 BY AMP (Japan) LTD.
ALL RIGHTS RESERVED.
AMP PRODUCTS COVERED BY PATENTS
AND OR PATENTS PENDING

AMP AMP (JAPAN), LTD.
Tokyo, Japan

| | | | | | |
|--|----------------------------|---------------------------|----------|---|----------|
| WIRE RANGE mm ² (AWG -) | | INSULATION DIA mmφ | | NAME 2P. ECONOSEAL J-MARK II+ CONNECTOR 2極 エコノシール J マーク II+ CAP HOUSING キャップハウジング | |
| MATERIAL SEE TABLE 表参照 | | COLOR SEE TABLE 表参照 | | GENERAL TOLERANCE | |
| A | 追加 -6 FJ00-5802-96 J-10009 | DR. | 8/24 '87 | DE. | 8/19 '87 |
| O | 作成 RELEASED KO YM | CHK. | 8/24 '87 | APP. | 8/24 '87 |
| LTR | REVISION RECORD | DR | CHK | DATE | CHK |
| | | Y. MATSUSAKA | | M. NOGUCHI | |
| | | SCALE | | REV. | |
| | | 2:1 | | A | |
| | | SIZE | | NUMBER | |
| | | A3 J | | C-174354 | |
| | | SHEET | | 1 OF 1 | |

单击下面可查看定价，库存，交付和生命周期等信息

[>>TE Connectivity\(泰科\)](#)