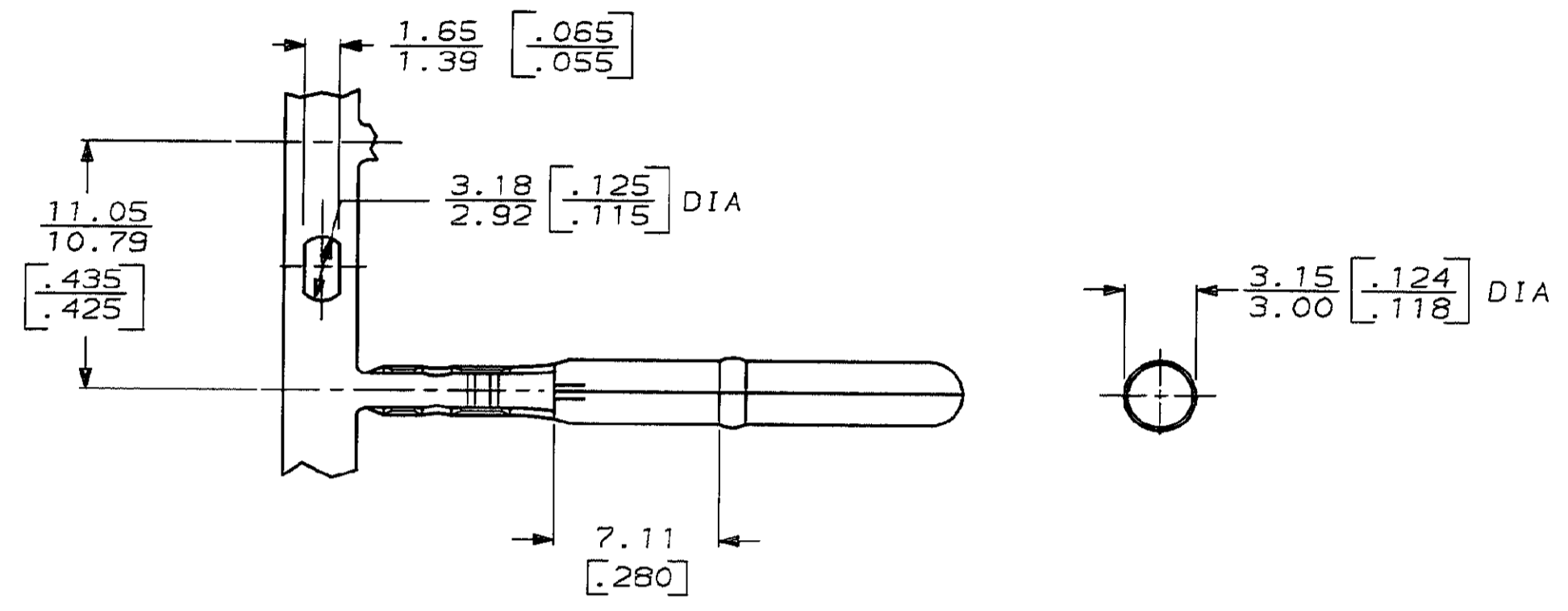
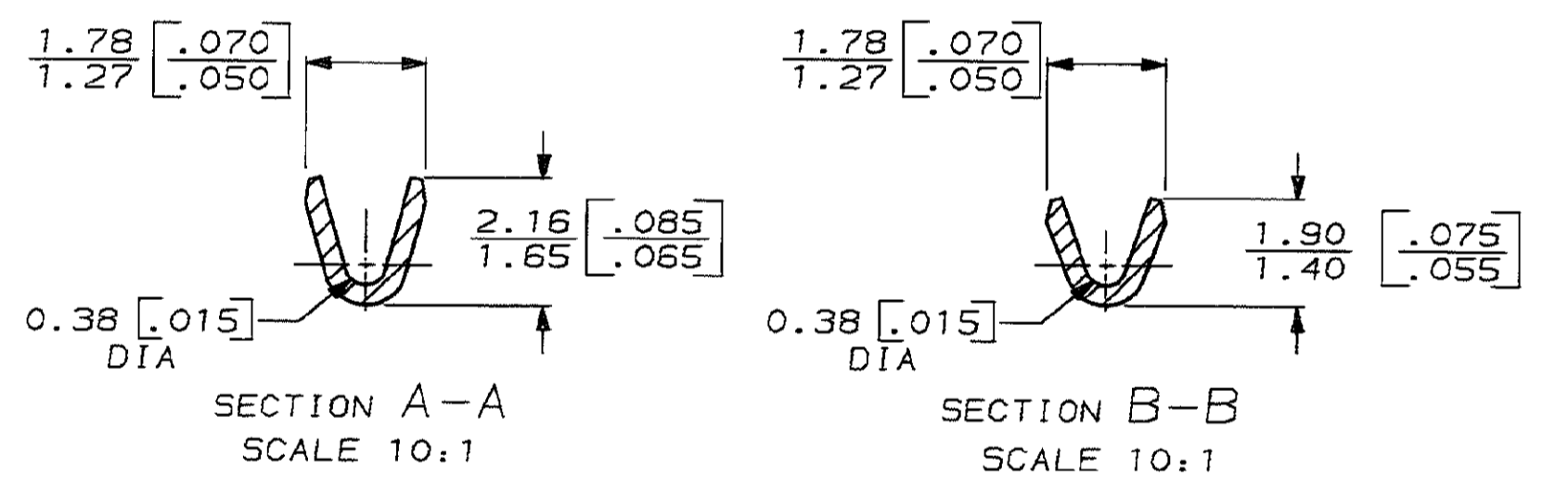
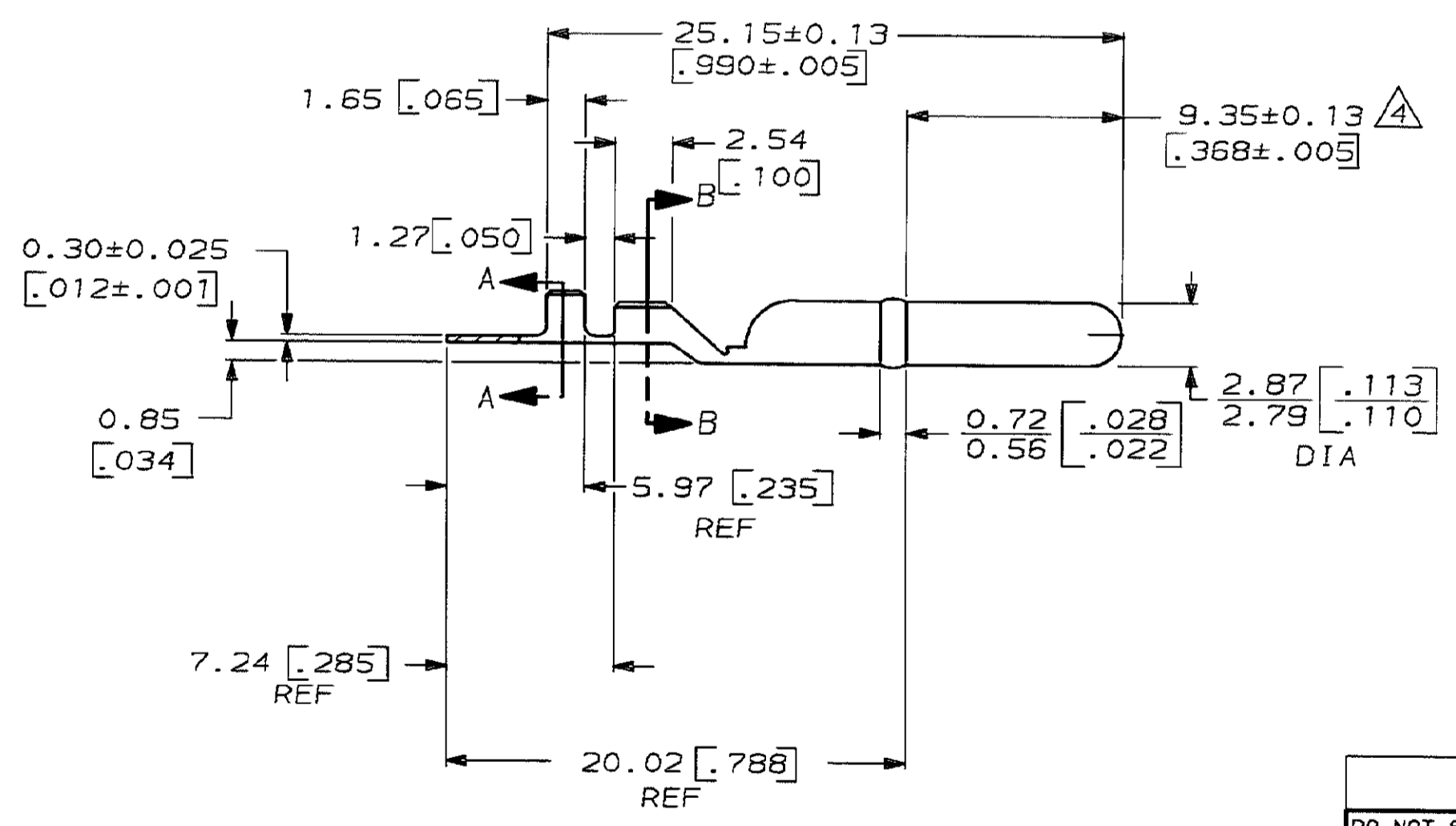


LOC	DIST	P	F	ZONE	LTR	REVISIONS	DATE	APPD
AF	50				E	REV PER 0190-93	6/22/93	PF/GY



- 1 CONTINUOUS STRIP ON REELS
- 2 DIMENSIONS IN BRACKETS ARE IN INCHES
- 3 SEAM OPENING TO BE 0.076 [0.003] MAX OVER ENTIRE LENGTH OF PIN
- 4 2.79-2.87 [0.110-0.113] DIA APPLIES OVER THIS LENGTH
- 5 PARTS MUST MEET 90° BEND TOWARDS SEAM ON MATING PIN SIDE OF 0.72 [0.028] BEAD WITHOUT COMPLETELY BREAKING OFF



METRIC					
F	1.07	3.56	F	1.07	.81 [0.032]
	[0.042]	[1.40]		[0.042]	.72 [0.030]
					.74 [0.029]
TYPE	WIDTH	STRIP LENGTH ±.015	TYPE	WIDTH	HEIGHT
INSUL BARREL CRIMP			WIRE BARREL CRIMP		WIRE

1.15-0.63 [0.045-.025]		0.05-0.12mm ² [30-26]		63493-1	
INSULATION RANGE		WIRE SIZE		PART NO	
DO NOT SCALE PRINT. UNLESS SPECIFIED DIMENSIONS IN INCHES TOLERANCES ON:		DR 6/6/88 P FORTNEY		AMP AMP INCORPORATED Harrisburg, Pa. 17105	
2 PLC DEC ± -		CHK 6/9/88 MS FEHER			
3 PLC DEC ± 0.25 [0.010]		APPD 6/9/88 D DECKER		NAME .112 DIA PIN	
ANGLES ± -		APPD 6/9/88 TL SHUTTER			
MATERIAL #2 HARD BRASS		PRODUCT SPEC		SIZE C	
FINISH PRE-TIN		APPLICATION SPEC		FSCM NO 00779	
		WEIGHT		DRAWING NO 63493	
				SCALE 4:1	
				SHEET 1 OF 1	

单击下面可查看定价，库存，交付和生命周期等信息

[>>TE Connectivity\(泰科\)](#)