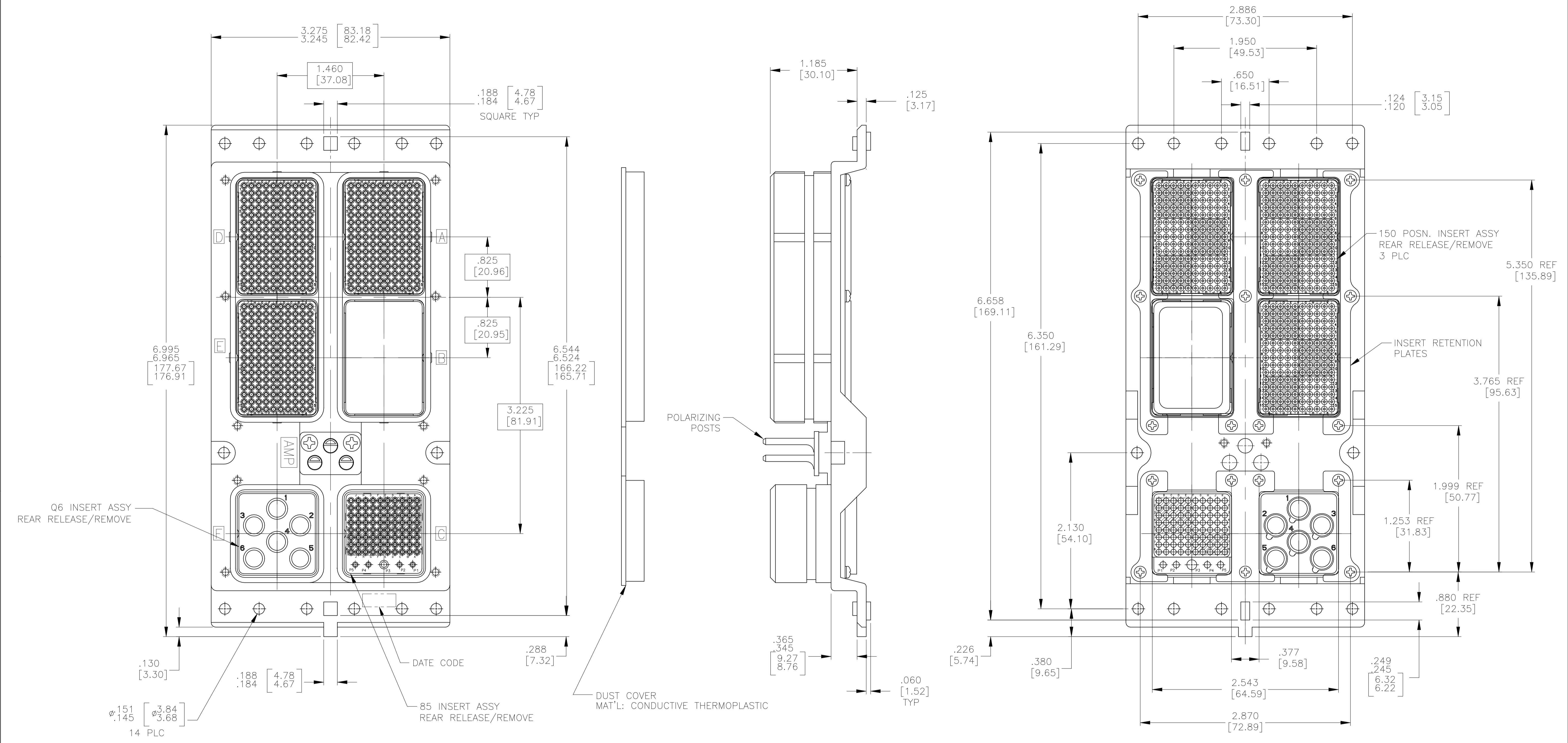


REVISIONS				
P	LTR	DESCRIPTION	DATE	BY
D	REV PER ECO	20-004365	2-4-21	CT RL



- CONNECTOR DIMENSIONS ARE PER ARINC 600 SPECIFICATION
- DUST COVER INSTALLED FOR SHIPPING. QTY = 2
- KEYING SHOWN IN POSITION "01" FOR REFERENCE ONLY. SEE TABLE FOR KEYING POSITION. FOR POSITION "00" KEYING SHIPPED UNASSEMBLED.
- CONTACTS INCLUDED WITH ASSEMBLY BUT NOT INSTALLED:
 SIZE 22 CRIMP PIN CONTACT; TE PART NO. 208262-3; QTY=530
 SIZE 20 CRIMP SOCKET CONTACT; TE PART NO. 208267-2; QTY=4
 SIZE 16 CRIMP SOCKET CONTACT; TE PART NO. 208270-2; QTY=1
 SIZE 8 QUADRAX CONTACT; TE PART NO. 1445693-1; QTY=6
- ASSEMBLY SHOWN WITH DIE-CAST SHELL. ASSEMBLIES WITH MACHINED SHELLS MAY VARY SLIGHTLY IN APPEARANCE.

COMPONENT	MATERIAL	FINISH
SHELL	DIE CAST ALUMINUM PER ASTM-B-85 OR ASTM-B-211 6061-T6 OR ASTM-B-209 2024-T4/T351	CHEMICAL CONVERSION COATING PER MIL-C-5541 TYPE II, CLASS 3 CHROMATE
INSERT RETENTION PLATES	ALUMINUM ALLOY PER ASTM-B-209	CHEMICAL CONVERSION COATING PER MIL-C-5541 TYPE II, CLASS 3 CHROMATE
SCREWS AND LOCKWASHERS	STEEL	TRIVALENT CHROMATE OVER ZINC PLATE
POLARIZING POSTS	ZINC ALLOY PER ASTM-B-86	ELECTROLESS NICKEL PER MIL-C-26074, CLASS 4, GRADE B
POLARIZING POST RETAINING PLATE	ALUMINUM ALLOY PER ASTM-B-209	BLUE ANODIZED PER MIL-A-8625
150 & 85 INSERTS	THERMOSET	-
Q6 INSERT	ALUMINUM ALLOY PER ASTM-B-209	ELECTROLESS NICKEL PER MIL-C-26074, CLASS 4, GRADE B
BLANK INSERT	ALUMINUM ALLOY	CHEMICAL CONVERSION COATING PER MIL-C-5541, CLASS 1A

"01"	2101927-1
KEYING POSITION	PART NO.

THIS DRAWING IS A CONTROLLED DOCUMENT.

DIN C.C.THOMAS 5-26-10
 CHK K.THACKSTON 5-26-10
 APVD K.THACKSTON 5-26-10

TE Connectivity

NAME: PLUG ASSY, SIZE 3, ARINC 600 (150/BLANK/85/150/150/Q6)

APPLICATION SPEC: -

SIZE: A1 CAGE CODE: 00779 DRAWING NO: 2101927

WEIGHT: 0.000000

CUSTOMER DRAWING SCALE: 1:1 SHEET: 1 of 1 REV: D

单击下面可查看定价，库存，交付和生命周期等信息

[>>TE Connectivity\(泰科\)](#)