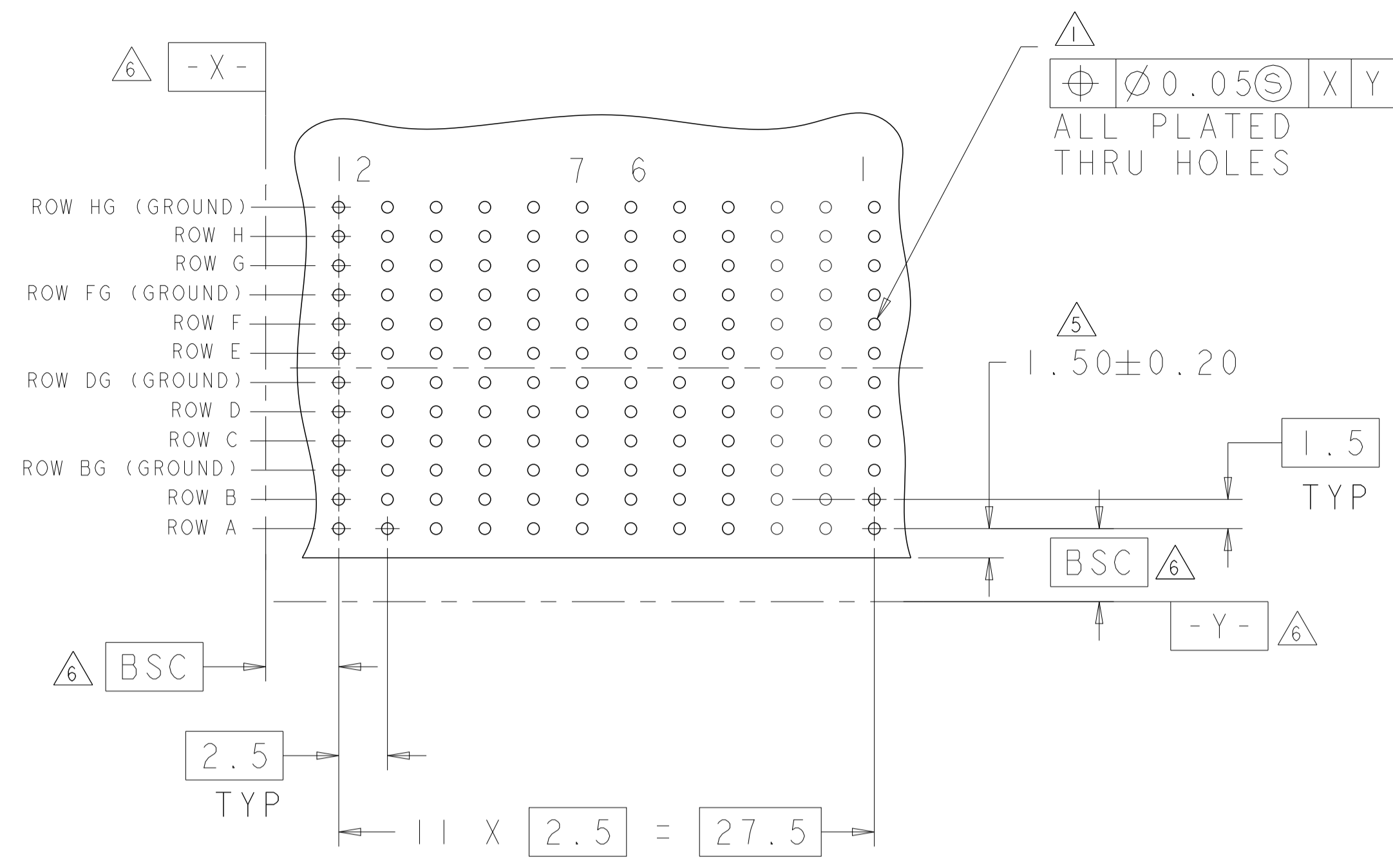
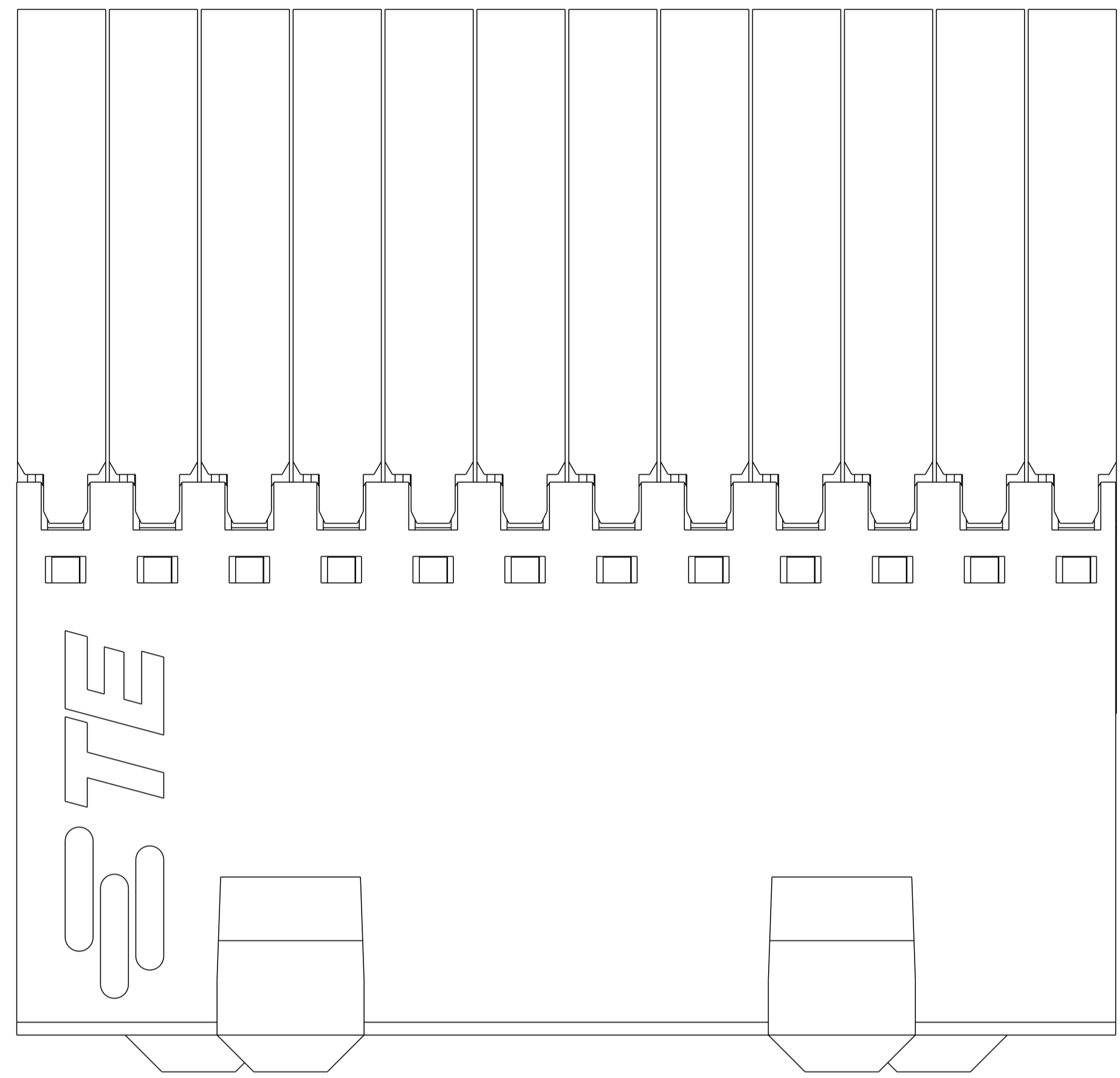
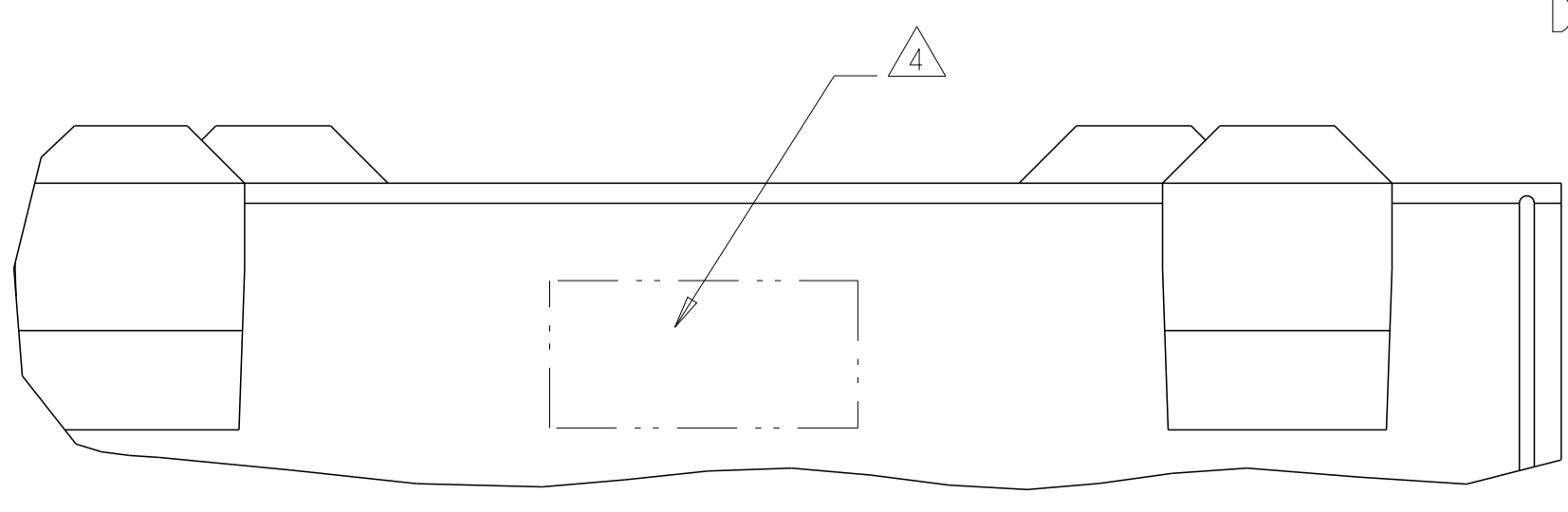
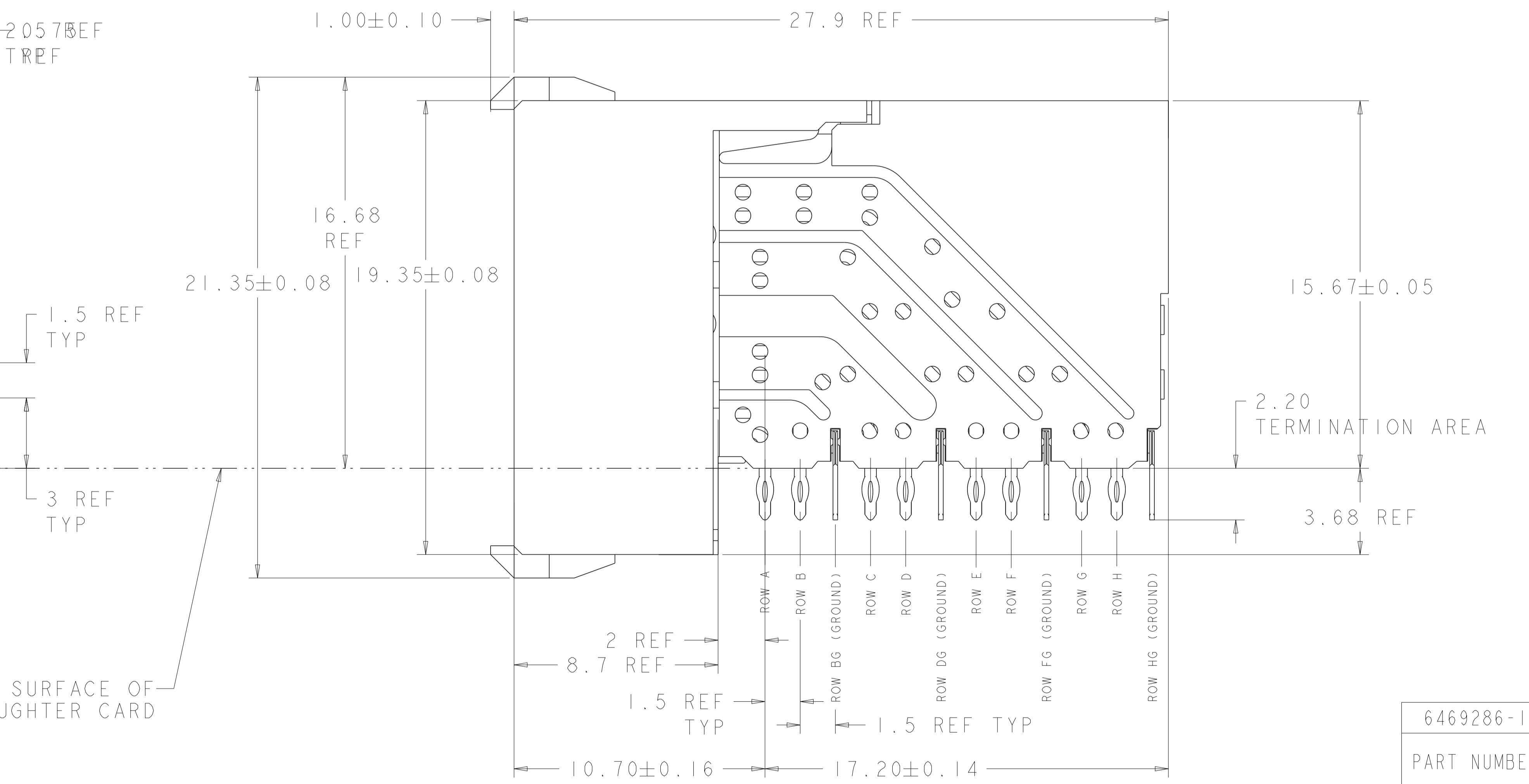
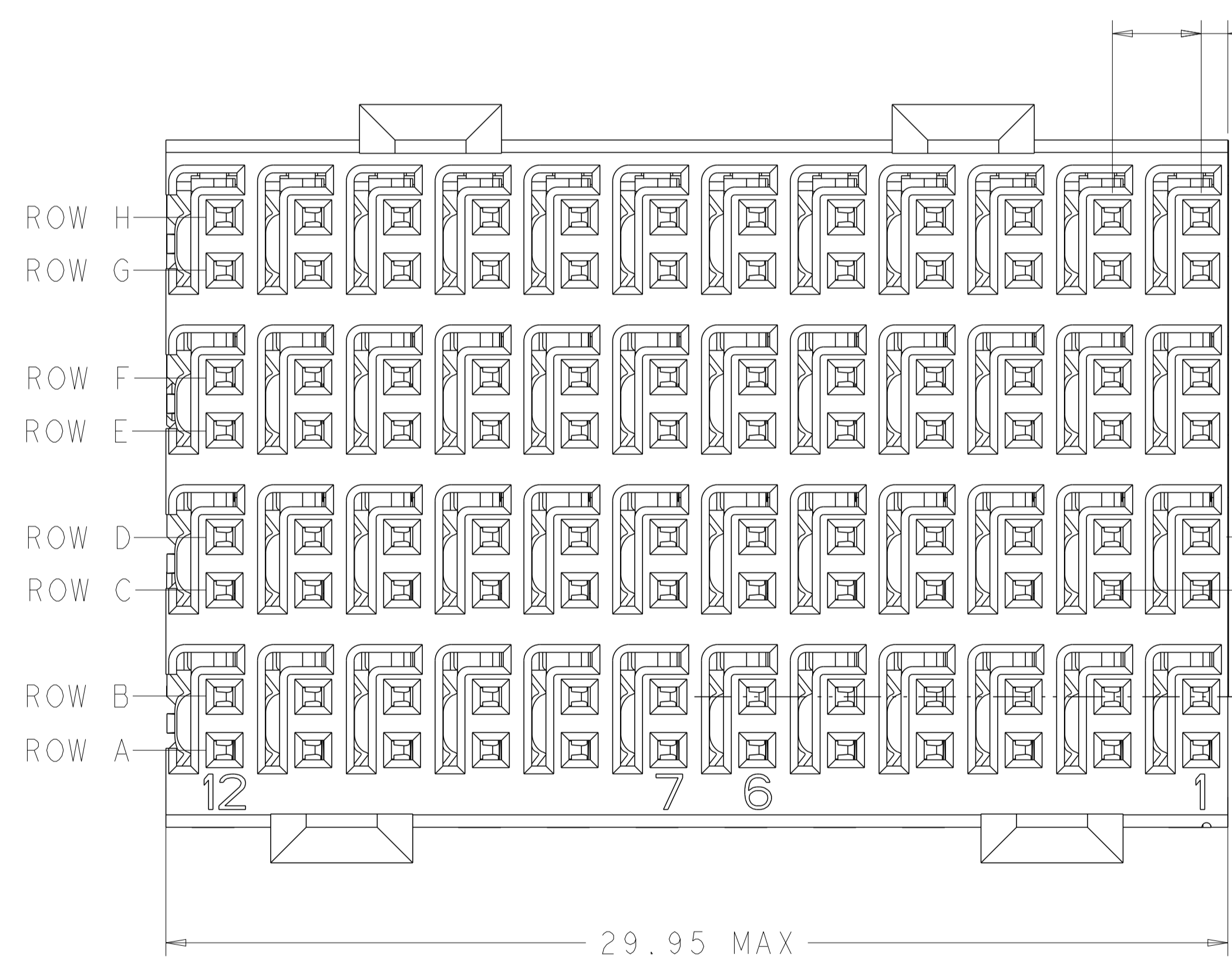


REVISIONS				
P	LTN	DESCRIPTION	DATE	APVD
D		REVISED PER ECO-14-005095	21APR2014	AP RP
E		REVISED PER ECO-16-008845	23SEP2016	AP RP
F		REVISED PER ECO-17-013036	13SEP2017	AP RP



- 1 REFERENCE APPLICATION SPEC 114-13059 FOR RECOMMENDED PLATED THRU HOLE DIAMETER AND PLATING THICKNESSES.
- 2 MATERIAL:
SHIELD - PHOSPHOR BRONZE
CONTACT - COPPER-NICKEL-SILICON
HOUSING, CHICKLET AND CHICKLET COVER - GLASS FILLED POLYESTER, UL 94V-0 RATED.
- 3 FINISH: SIGNAL AND GROUND CONTACTS:
MATING AREA: MEETS THE PERFORMANCE REQUIREMENTS OF PRODUCT SPECIFICATION 108-2055; BASED ON TELCORDIA GR-1217-CORE, APPLICATIONS IN UNCONTROLLED ENVIRONMENTS
COMPLIANT PIN AREA: 0.5 μm MIN MATTE TIN OVER BASE PLATING
- 4 CONNECTOR MARKED WITH PART NUMBER AND DATE CODE IN APPROXIMATE AREA SHOWN
- 5 DIMENSION APPLIES TO CENTERLINE OF THRU HOLE.
- 6 DATUMS AND BASIC DIMENSIONS ESTABLISHED BY CUSTOMER.
- 7. CONTACT AREA LUBRICATED WITH BELLCORE APPROVED LUBRICANT. TECHNICAL REFERENCE: GR-1217-CORE, ISSUE 1, NOVEMBER 1995.

RECOMMENDED PC BOARD LAYOUT,
 DAUGHTER BOARD,
 COMPONENT SIDE SHOWN
 SCALE 4:1



6469286-1
 PART NUMBER

THIS DRAWING IS A CONTROLLED DOCUMENT.		OWN S. J. MAGARO 26 JUL 2004	TE Connectivity	
DIMENSIONS:		CHK R. A. PATTERSON 26 JUL 2004	NAME RECEPTACLE ASSEMBLY, 4 PAIR, 30mm, HMzd	
mm	0 PLC #	APVD H. PATTERSON 17 MAY 2007	SIZE CAGE CODE DRAWING NO RESTRICTED TO	
1 PLC #	1 PLC #	PRODUCT SPEC	A100779C=6469286	
2 PLC #	2 PLC #	APPLICATION SPEC	SCALE 8:1 SHEET 1 OF 1 REV F	
3 PLC #	3 PLC #	WEIGHT	CUSTOMER DRAWING	
4 PLC #	4 PLC #	FINISH		
ANGLES				

单击下面可查看定价，库存，交付和生命周期等信息

[>>TE Connectivity\(泰科\)](#)