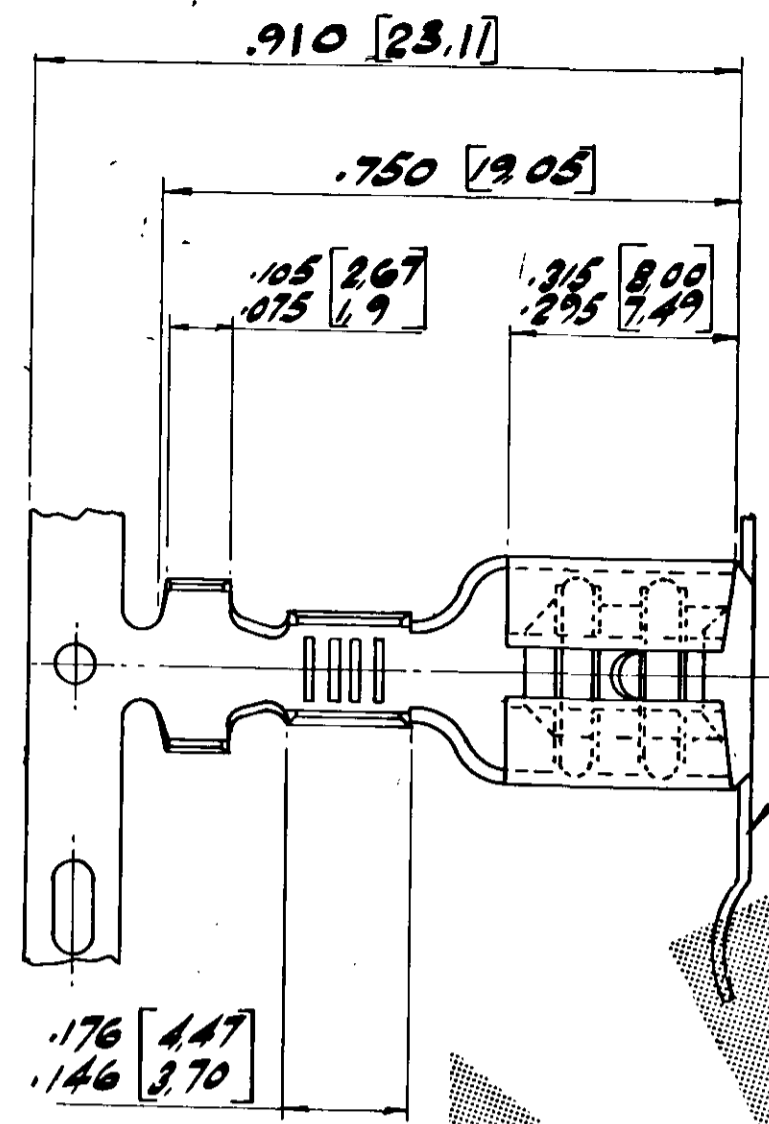


DO NOT SCALE
DIMENSIONS IN

3rd ANGLE PROJECTION



PART NO	MATERIAL	FINISH	REMARKS	PART NO	MATERIAL	FINISH	REMARKS
△ OBSOLETE 2-150645-6	BRASS	ELECTRO-TIN	NO CARRIER	150645-1	PHOS. BRONZE	NONE	
				150645-2	BRASS	NONE	
				△ OBSOLETE 150645-3	BRASS	PRE-TIN	
				150645-4	STEEL	NONE	
				150645-5	STEEL	NICKEL	OBSOLETE
				150645-6	PHOS. BRONZE	PRE-TIN	NO REAR
△ OBSOLETE 150645-7	STEEL	ELECTRO-TIN	CARRIER	150645-8	PHOS. BRONZE	SILVER	STRIP
△ OBSOLETE 150645-9	NICKEL SILVER	NONE		150645-0	BRASS	ELECTRO-TIN	
△ OBSOLETE 150645-1	PHOS. BRONZE	ELECTRO-TIN		2-150645-1	PHOS. BRONZE	NONE	
				2-150645-2	BRASS	NONE	
				2-150645-3	BRASS	PRE-TIN	
△ OBSOLETE 2-150645-4	PHOS. BRONZE	PRE-TIN		2-150645-5	NICKEL SILVER	NONE	
				3-150645-1	PHOS. BRONZE	NONE	
				3-150645-2	BRASS	NONE	
				3-150645-3	BRASS	PRE-TIN	WITH REAR
				3-150645-4	STEEL	NONE	CARRIER
OBSOLETE 3-150645-5	STEEL	NICKEL	STRIP	3-150645-6	PHOS. BRONZE	PRE-TIN	
				3-150645-7	STEEL	ELECTRO-TIN	
				3-150645-8	PHOS. BRONZE	SILVER PLATE	
				3-150645-9	NICKEL SILVER	NONE	
				4-150645-0	BRASS	ELECTRO-TIN	
				4-150645-1	PHOS. BRONZE	ELECTRO-TIN	

SIDES OF 'U' TO BE THE SAME HEIGHT WITHIN .015 [0.38]

SEE "REMARKS" ON THIS CARRIER

.035 [0.89] MAX. PERMISSIBLE AT EDGES OF TAB

.034 [0.86]
.030 [0.76]

.235 [5.96]
.210 [5.33]

.165 [4.19]
.133 [3.37]

.100 [2.54]
.080 [2.03]

FITS .032 [0.81] TAB.

.310 [7.87]
.290 [7.36]

.134 [3.4]
.322 [8.18]
.300 [7.62]
.020 [0.51]

△ OBSOLETE PARTS: OBSOLETE CIS STREAMLINING PER D.RENAUD/D.SINISI

OTHER TREATMENT		FINISH		MATERIAL		PART NUMBER	
CUSTOMER DWG FOR REFERENCE ONLY		SEE TABLE ABOVE		C/50645-1		△	
THIS DRAWING IS UNPUBLISHED				RELEASED FOR PUBLICATION			
© COPYRIGHT 19 RESERVED AMP PRODUCTS MAY BE COVERED BY BRITISH AND FOREIGN PATENTS AND/OR PATENTS PENDING				BY AMP OF GREAT BRITAIN LTD ALL INTERNATIONAL RIGHTS RESERVED			
TOLERANCES UNLESS OTHERWISE STATED:-		INS. DIA. RANGE		WIRE RANGE		SCALE	
DEC ± .015 [0.38]		.120 - .170		18 - 14		4:1	
ANGLES ± 1°							
DR. PE-DRAWN/ C.F. SLOUGH		NAME WIRE TERMINAL					
CHK. D. ALLEN 5/12/83		250 SERIES FASTON PIGGY BACK.					
REV. REVISION RECORD		DR/APP		DATE		APB David Allen 5/12/83	
T3 REVISED PER ECR-19-018140		MK TD		24DEC2019		DR. PE-DRAWN/ C.F. SLOUGH	
T2 REVISED PER ECR-15-016346		NK/LP		09MAY2016		CHK. D. ALLEN 5/12/83	
REV		DR/APP		DATE		APB David Allen 5/12/83	
A2		LOC. DWG. NO.		REV. SHEET		T3 1 of 1	
E		C-150645		E		C-150645	

单击下面可查看定价，库存，交付和生命周期等信息

[>>TE Connectivity\(泰科\)](#)