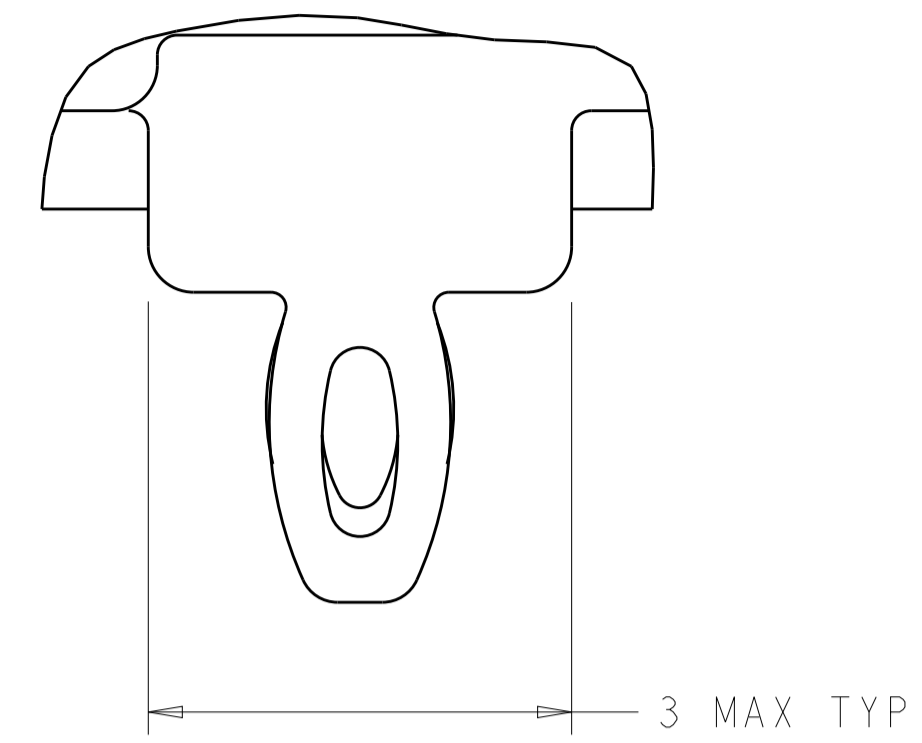


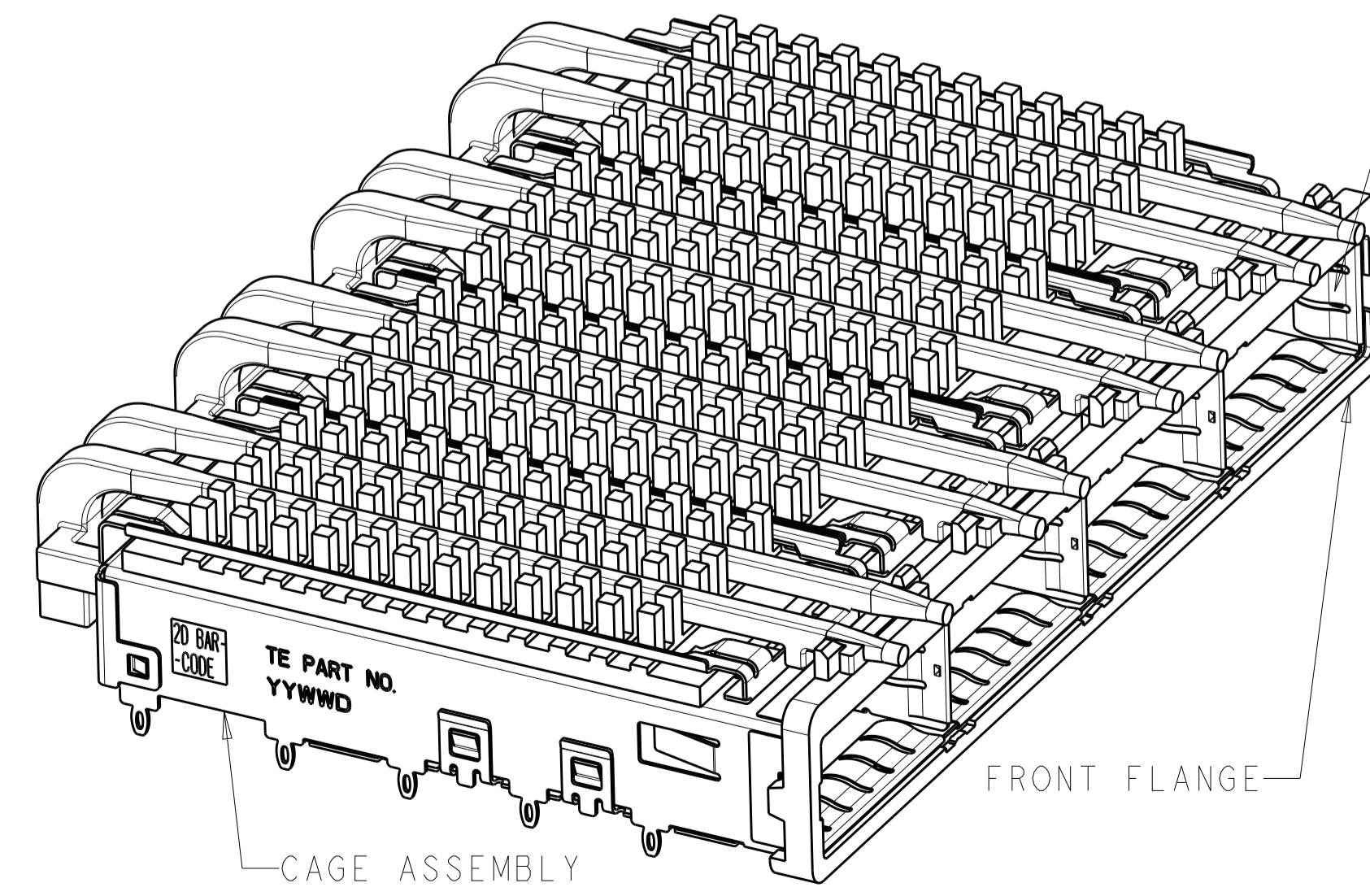
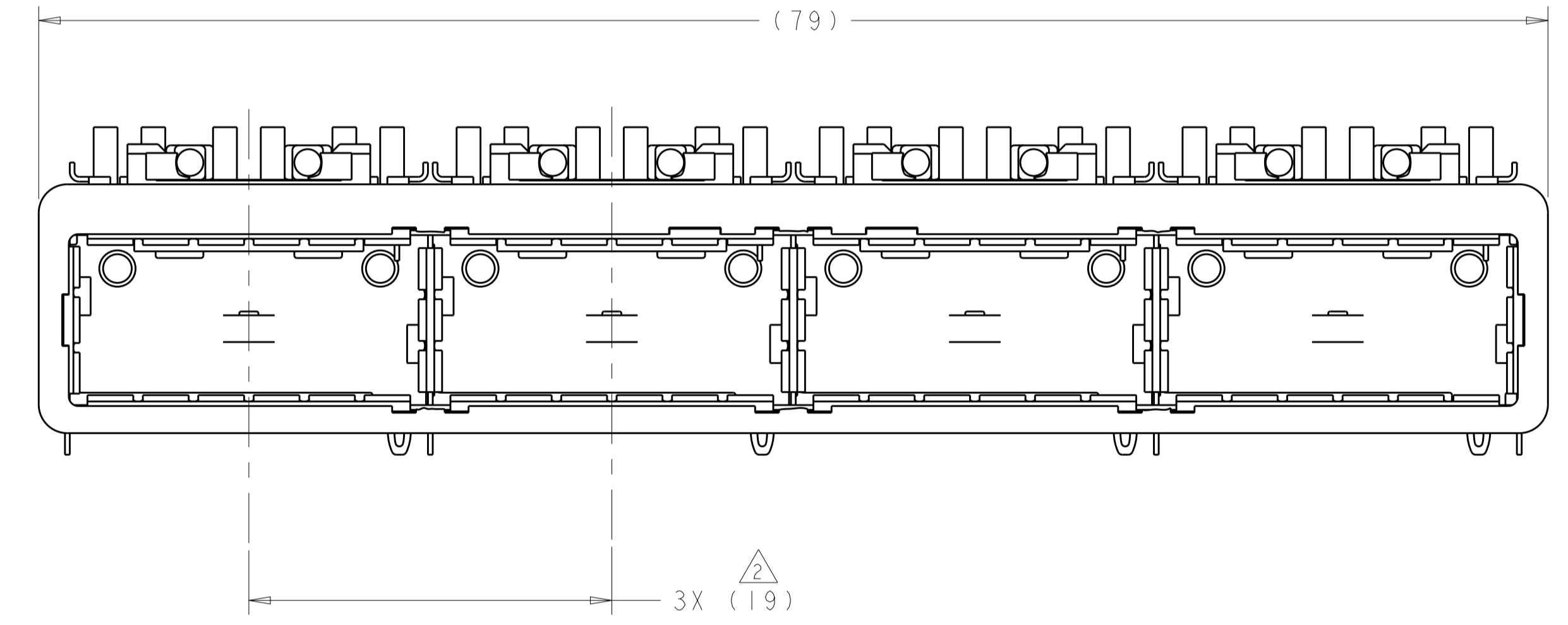
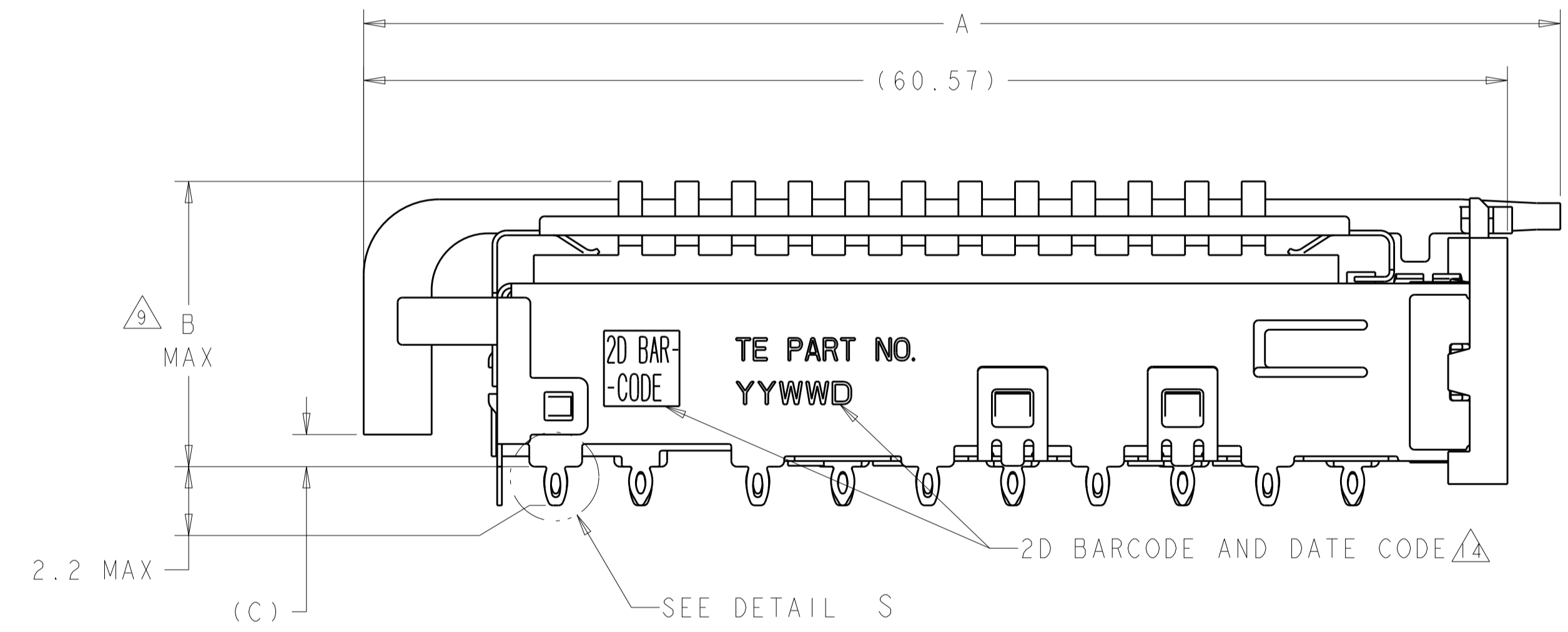
LOC	DIST	REVISIONS					
GP	00	P	LTN	DESCRIPTION	DATE	DWN	APVD
		A		ACTIVE THE DRAWING	03JAN2014	ZJ	JY
		B		REVISE PER ECO-15-000289	8JAN2015	RG	MC
		B1		ADD 2170567-6 AND 2170567-7	3MAY2015	RG	SH



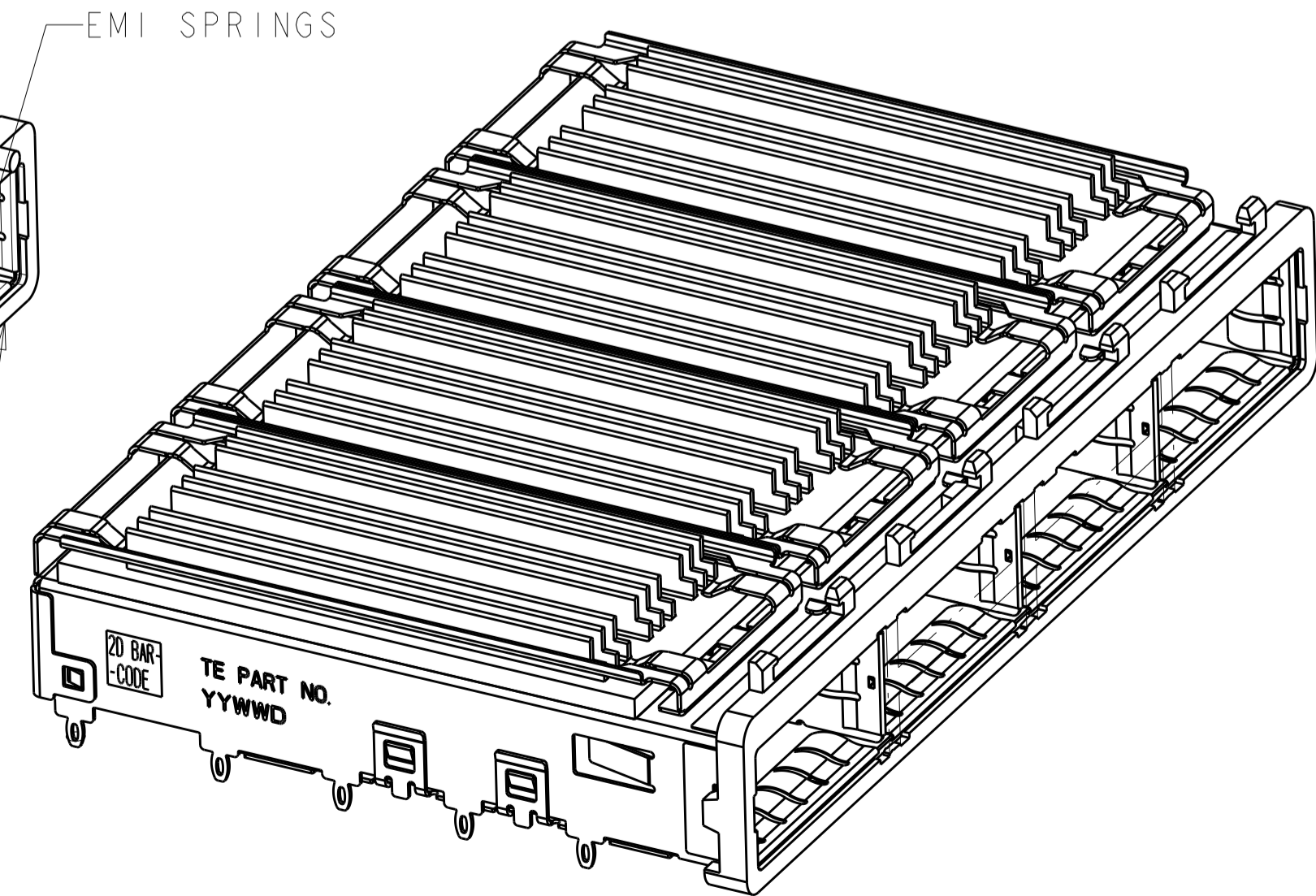
DETAIL S
SCALE 20:1

- 1. CAGE ASSEMBLY MATERIAL: NICKEL SILVER, 0.25 THICK
HEAT SINK MATERIAL: ALUMINUM
HEAT SINK CLIP MATERIAL: STAINLESS STEEL
EMI SPRING MATERIAL: COPPER ALLOY
FRONT FLANGE MATERIAL: ZINC ALLOY
LIGHT PIPE MATERIAL: CLEAR POLYCARBONATE
- 2. PITCH BETWEEN PORTS OF ONE 1X4 CAGE ASSEMBLY.
- 3. SPACING BETWEEN CAGES ON THE SAME PC BOARD, TO BE SPECIFIED BY CUSTOMER, MUST COMPLY WITH MINIMUM DIMENSIONS SHOWN.
- 4. REFERENCE APPLICATION SPEC 114-13218 FOR RECOMMENDED DRILL HOLE DIAMETER AND PLATING THICKNESS.
- 5. DATUMS AND BASIC DIMENSIONS ESTABLISHED BY CUSTOMER.
- 6. DIMENSION F IS THE NOMINAL THICKNESS OF CUSTOMER SUPPLIED PC BOARD,
SINGLE SIDED PC BOARD MINIMUM THICKNESS = 1.45mm
DOUBLE SIDED PC BOARD MINIMUM THICKNESS = 2.2mm PER QSFP.
- 7. HEAT SINKS, LIGHT PIPES, AND HEAT SINK CLIPS SHIPPED ASSEMBLED TO CAGE ASSEMBLY. CAGE ASSEMBLY MAY BE PRESSED INTO THE PCB AS SHIPPED.
- 8. DATUM -A- IS TOP SURFACE OF PC BOARD.
- 9. DIMENSION APPLIES WITH MODULE INSERTED IN CAGE.
- 10. UNPLATED THRU HOLE.
- 11. MATES WITH QSFP MSA COMPATIBLE TRANSCEIVER.
- 12. SURFACE TRACES PERMITTED WITHIN THIS AREA EXCEPT WHERE CAGE STANDOFFS, SHOWN IN DETAIL S, CONTACT PC BOARD.
- 13. BASELINE FOR THESE DIMENSIONS IS THE CENTER OF COMPLIANT PIN HOLE.
- 14. 2D BARCODE AND DATE CODE (YYWW) MARKED ON SIDE OF CAGE.

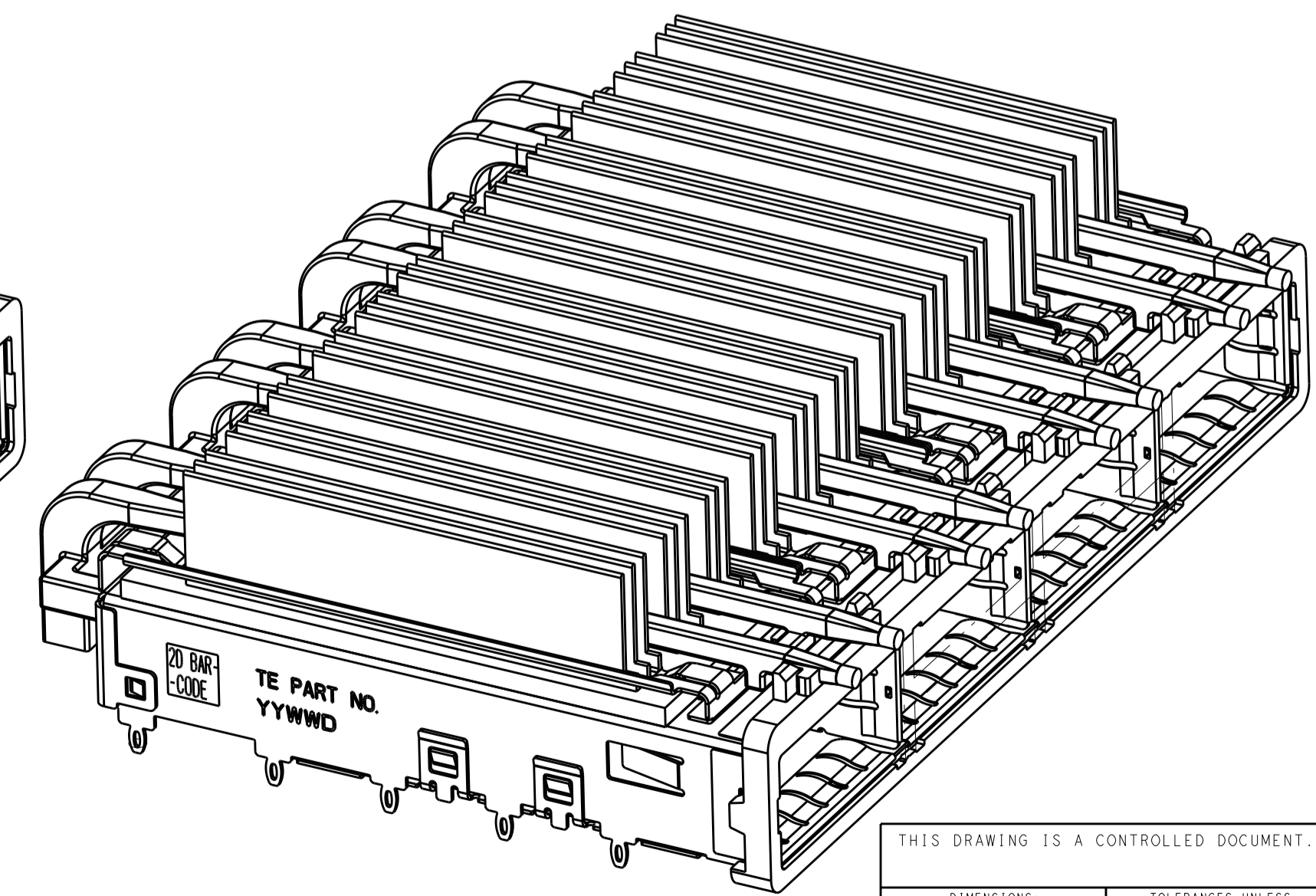
- 15. REFERENCE APP SPEC 114-13218 FOR GASKET THICKNESS CALCULATION.
- 16. EMI SPRING FINISH: 2µm MINIMUM TIN
FRONT FLANGE FINISH: 3µm MINIMUM TIN OVER 1.27µm MINIMUM NICKEL OVER 5.08µm MINIMUM COPPER.
HEAT SINK FINISH: BLACK ANODIZE PROCESS



2170567-3
SCALE 5:2



2170567-6
SCALE 5:2



2170567-7
SCALE 5:2

A	B	HEAT SINK PROFILE	PART NUMBER
62.57	21.0	CUSTOMIZED	2170567-7
N/A	15.0	CUSTOMIZED	2170567-6
62.15	16.8	CUSTOMIZED	2170567-5
64.07	23.0	NETWORKING	2170567-4
64.07	16.0	SAN	2170567-3
64.07	16.8	CUSTOMIZED	2170567-2
64.07	13.7	PCI	2170567-1

THIS DRAWING IS A CONTROLLED DOCUMENT.

DIMENSIONS: mm

TOLERANCES UNLESS OTHERWISE SPECIFIED:

0 PLC	±
1 PLC	±0.1
2 PLC	±0.1
3 PLC	±
4 PLC	±
ANGLES	±

MATERIAL: FINISH

DATE: 01JUL2013

CHK: JASON

APVD: AC

PRODUCT SPEC: 108-2286

APPLICATION SPEC: 114-13218

WEIGHT: -

Customer Drawing

SCALE: 4:1

SHEET 1 OF 5

REV: B1

TE Connectivity

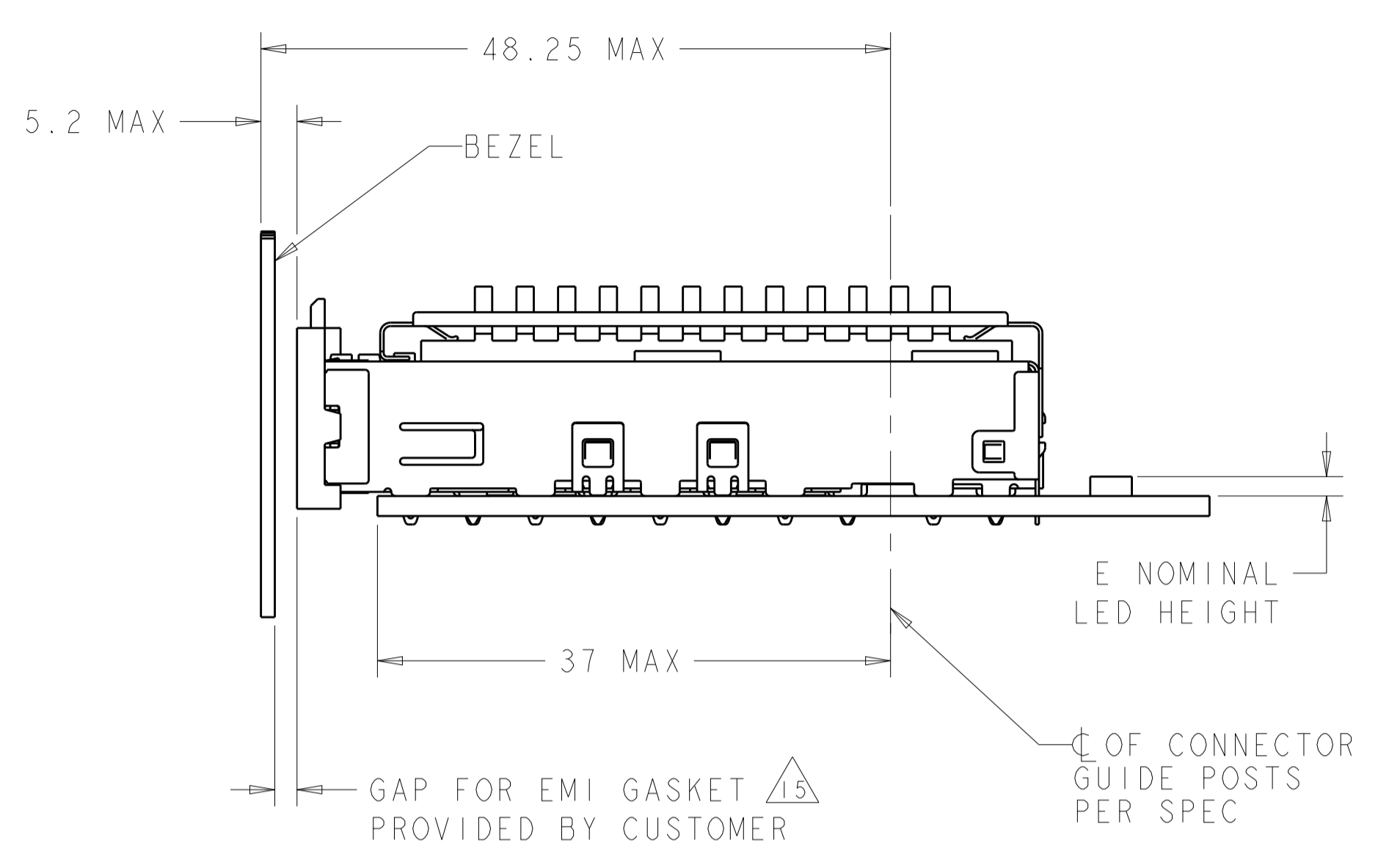
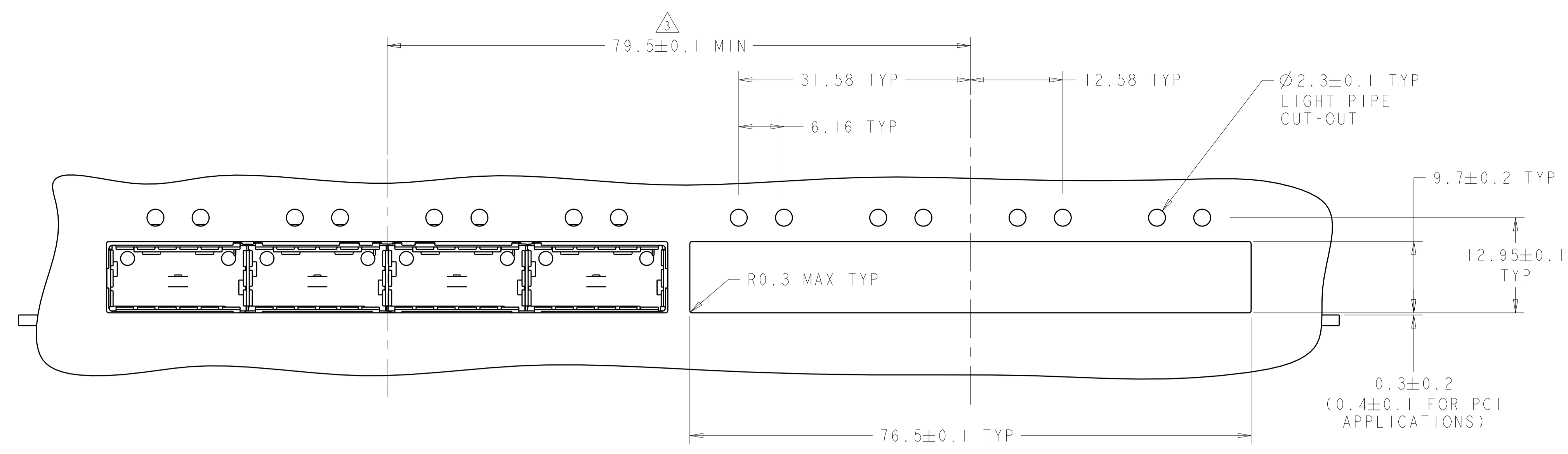
NAME: 1X4 CAGE ASSEMBLY, BEHIND BEZEL, W/ LIGHT PIPES AND HEAT SINKS, QSFP

SIZE: A1

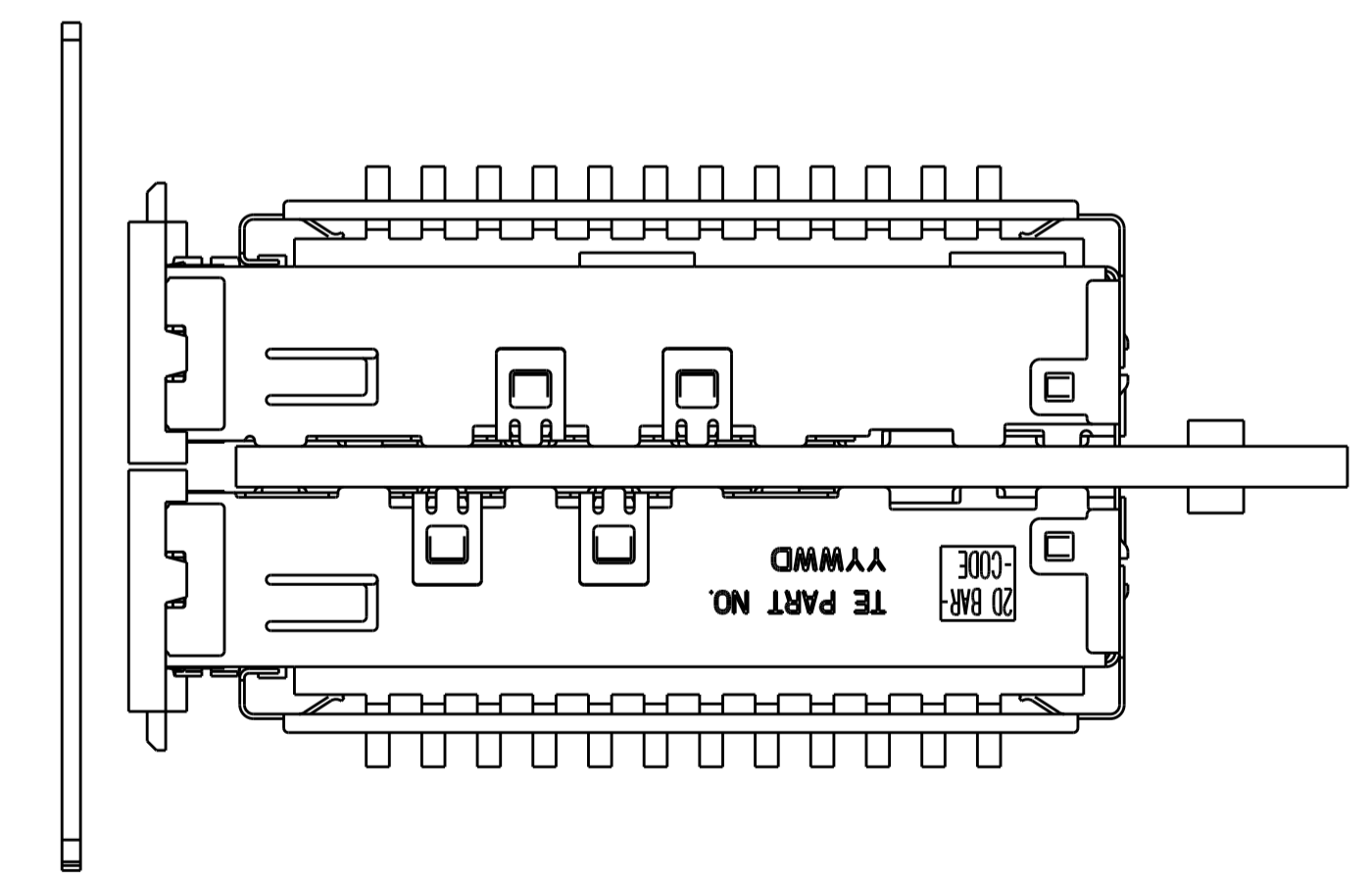
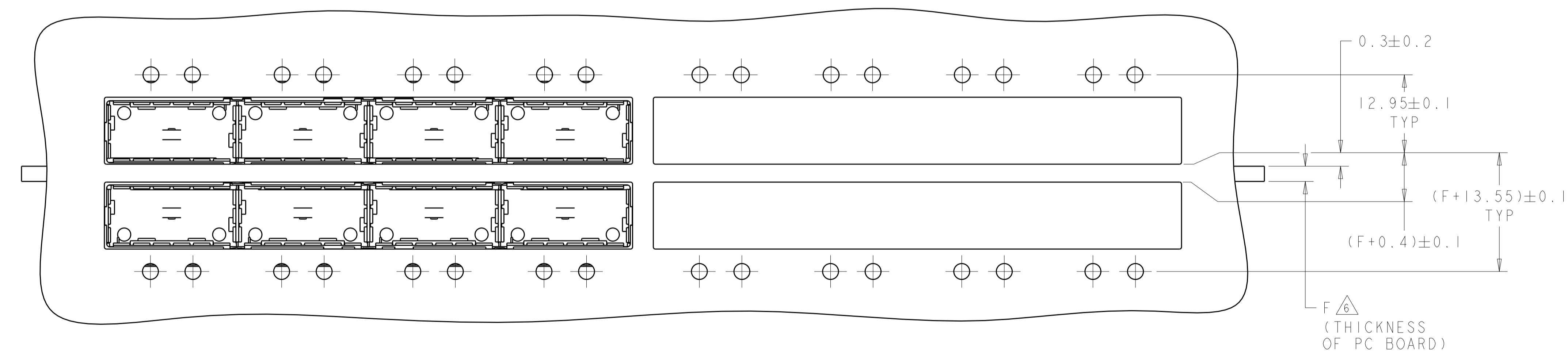
DRAWING NO: C=2170567

LOC	DIST	REV	DATE	BY	APPD
GP	00				

REVISIONS					
REV	DATE	BY	APPD	DESCRIPTION	DATE
-	-	-	-	SEE SHEET 1	-



ONE SIDED CONFIGURATION
 SCALE 5:2

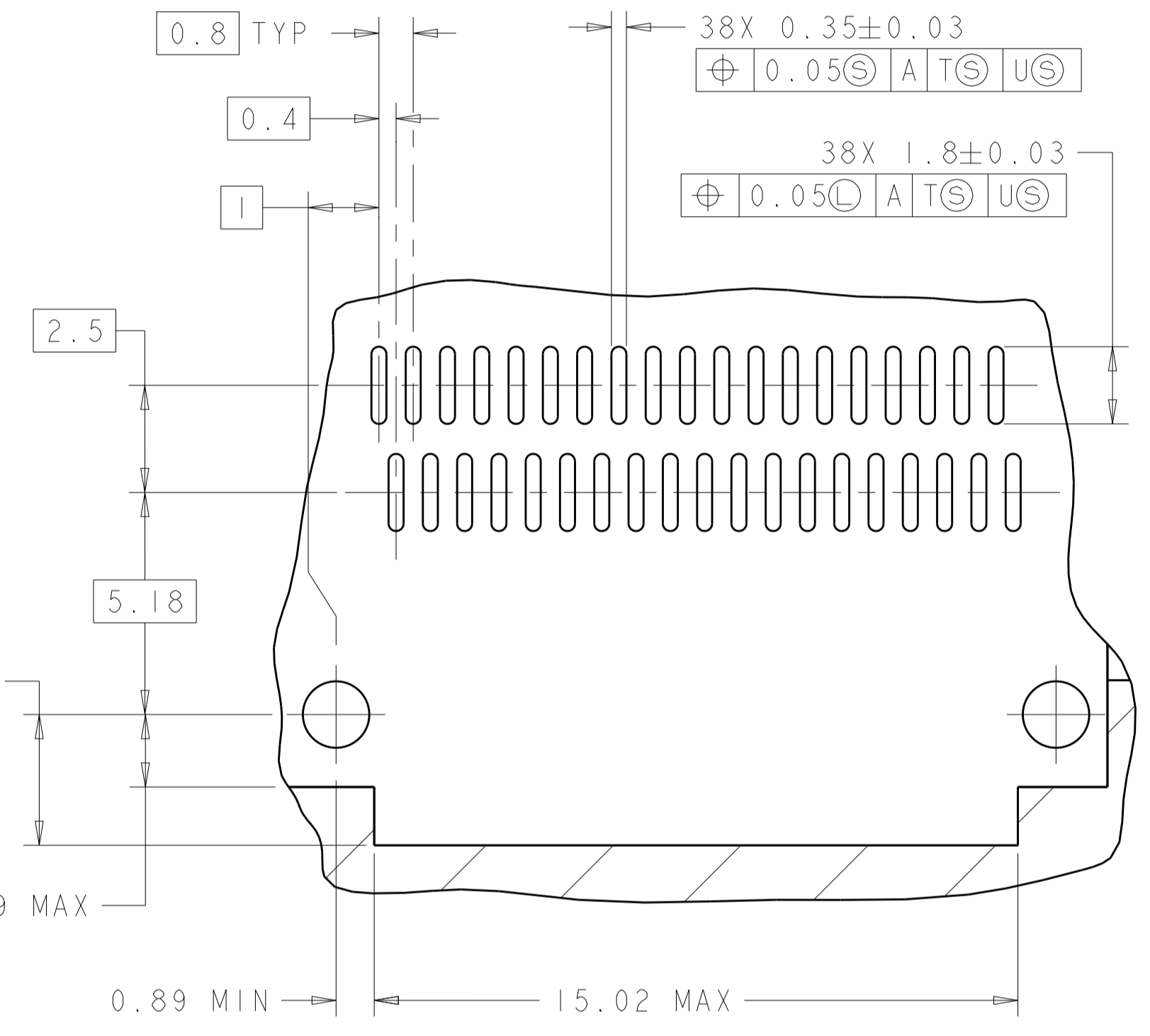
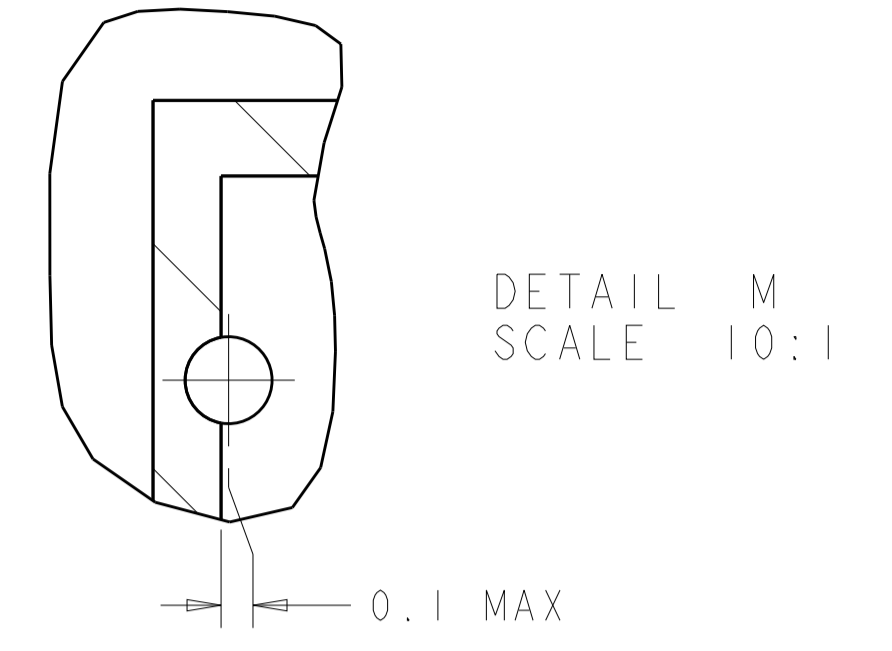
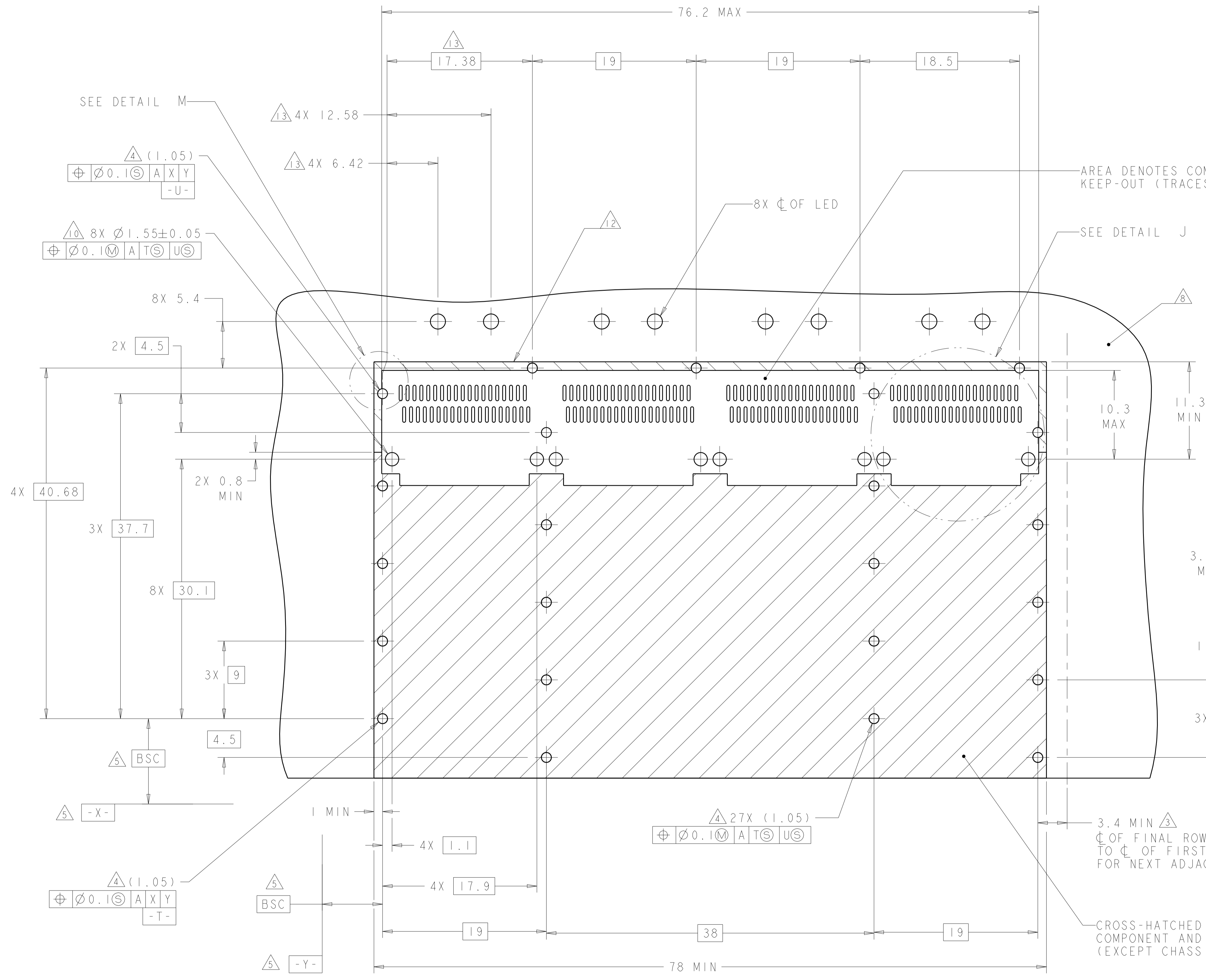


BELLY TO BELLY CONFIGURATION
 SIMILAR TO ONE SIDED
 EXCEPT WHERE NOTED
 SCALE 5:2

THIS DRAWING IS A CONTROLLED DOCUMENT.		OWN: 01JUL2013	TE Connectivity
DIMENSIONS: mm		CHK: JASON 01JUL2013	
TOLERANCES UNLESS OTHERWISE SPECIFIED:		APPD: AC 01JUL2013	NAME: 1X4 CAGE ASSEMBLY, BEHIND BEZEL, W/ LIGHT PIPES AND HEAT SINKS, QSFP
0 PLC ±		PRODUCT SPEC: 108-2286	
1 PLC ±0.1		APPLICATION SPEC: 114-13218	SIZE: A1 CAGE CODE: C=2170567
2 PLC ±0.1		WEIGHT: -	
3 PLC ±		Customer Drawing	RESTRICTED TO: -
4 PLC ±		SCALE: 4:1	SHEET: 3 OF 5
ANGLES ±			REV: B1
FINISH			

LOC	DIST	REV	DATE	BY	APPD
GP	00				

REVISIONS			
NO.	DESCRIPTION	DATE	BY
1	SEE SHEET 1		



RECOMMENDED PC BOARD LAYOUT
SINGLE SIDE MOUNT CONFIGURATION
SCALE 4:1

AREA DENOTES COMPONENT
KEEP-OUT (TRACES PERMITTED)

SEE DETAIL J

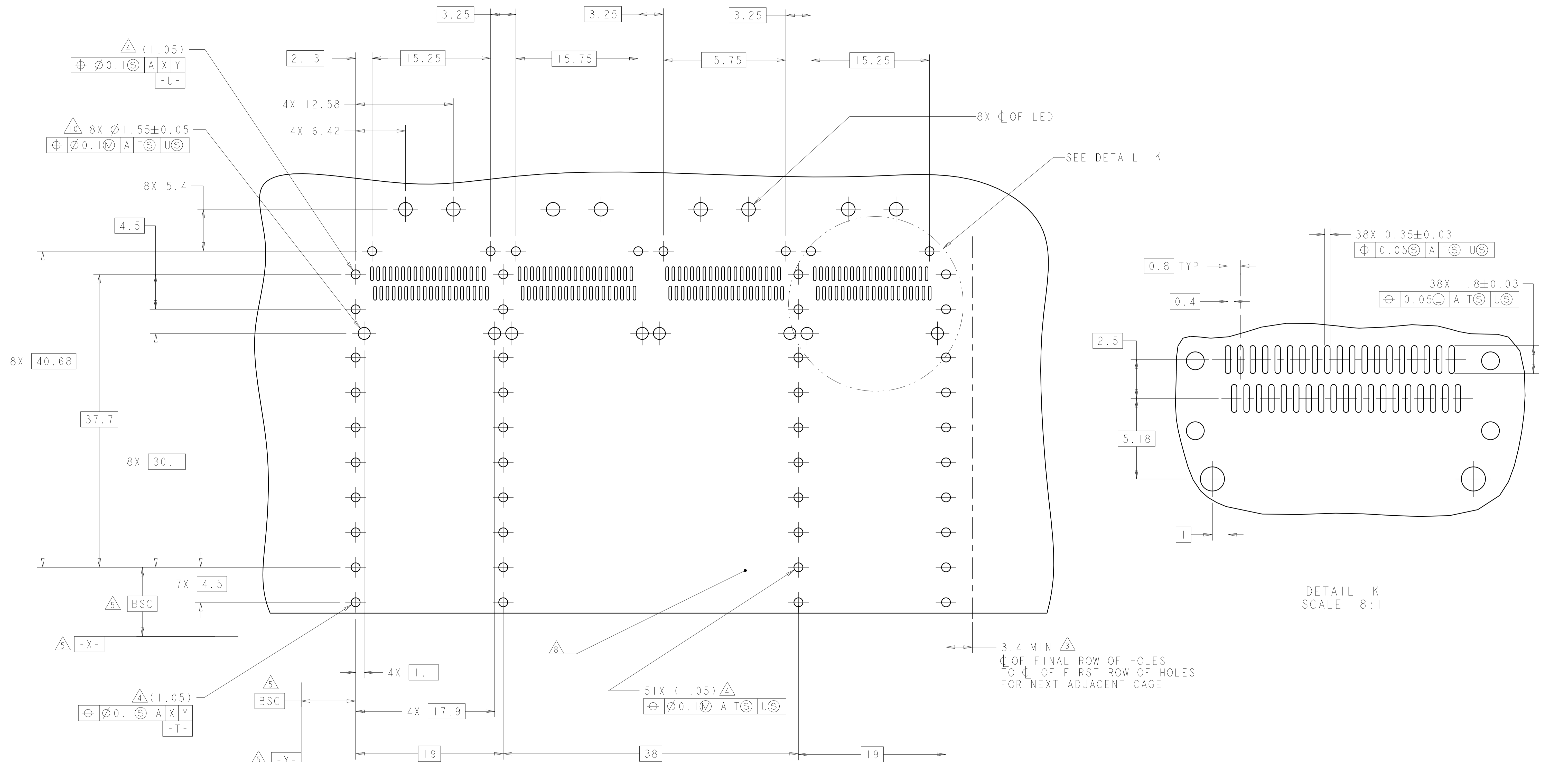
3.4 MIN Δ
CL OF FINAL ROW OF HOLES
TO CL OF FIRST ROW OF HOLES
FOR NEXT ADJACENT CAGE

CROSS-HATCHED AREA DENOTES
COMPONENT AND TRACE KEEP-OUT
(EXCEPT CHASSIS GROUND)

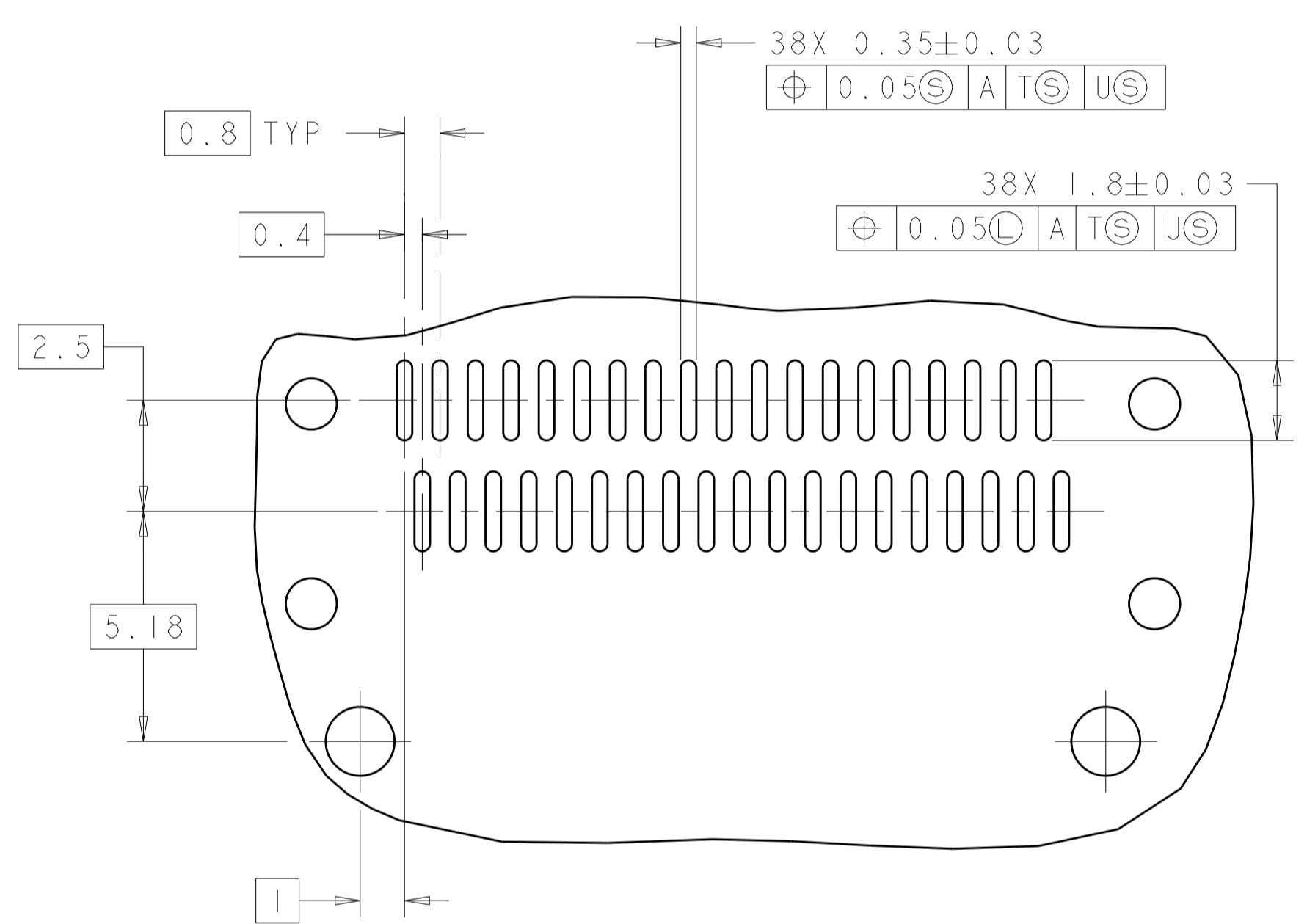
THIS DRAWING IS A CONTROLLED DOCUMENT.		OWN: ZJ	01 JUL 2013		TE Connectivity
DIMENSIONS: mm		CHK: JSAON	01 JUL 2013		NAME: 1X4 CAGE ASSEMBLY, BEHIND BEZEL, W/ LIGHT PIPES AND HEAT SINKS, QSFP
TOLERANCES UNLESS OTHERWISE SPECIFIED:		APVD: AC	01 JUL 2013	PRODUCT SPEC: 108-2286	
0 PLC ±0.1		APPLICATION SPEC: 114-13218		RESTRICTED TO: A1	
1 PLC ±0.1		WEIGHT: -		SCALE: 4:1	
2 PLC ±0.1		Customer Drawing		SHEET 4 OF 5	
3 PLC ±0.1				REV: B1	
4 PLC ±0.1					
ANGLES ±0.1					
FINISH: -					

LOC	DIST	REV	DATE	BY	APPD
GP	00				

REVISIONS					
REV	DATE	BY	APPD	DESCRIPTION	DATE
-	-	-	-	SEE SHEET 1	-



SEE DETAIL K



DETAIL K
SCALE 8:1

RECOMMENDED PC BOARD LAYOUT
BELLY TO BELLY CONFIGURATION
SEE SHEET 4 FOR COMPONENT AND TRACE KEEP-OUTS
SCALE 4:1

THIS DRAWING IS A CONTROLLED DOCUMENT.		OWN: ZJ	01 JUL 2013	STE TE Connectivity
DIMENSIONS: mm		CHK: JASON	01 JUL 2013	
TOLERANCES UNLESS OTHERWISE SPECIFIED:		APPD: AC	01 JUL 2013	
0 PLC ±0.1 2 PLC ±0.1 3 PLC ±0.1 4 PLC ±0.1 ANGLES ±0.1 FINISH ±0.1		PRODUCT SPEC: 108-2286	APPLICATION SPEC: 114-13218	
MATERIAL: -	FINISH: -	WEIGHT: -	Customer Drawing	NAME: 1X4 CAGE ASSEMBLY, BEHIND BEZEL, W/ LIGHT PIPES AND HEAT SINKS, QSFP SIZE: A1 CAGE CODE: - DRAWING NO: C=2170567 RESTRICTED TO: - SCALE: 4:1 SHEET 5 OF 5 REV: B1

单击下面可查看定价，库存，交付和生命周期等信息

[>>TE Connectivity\(泰科\)](#)