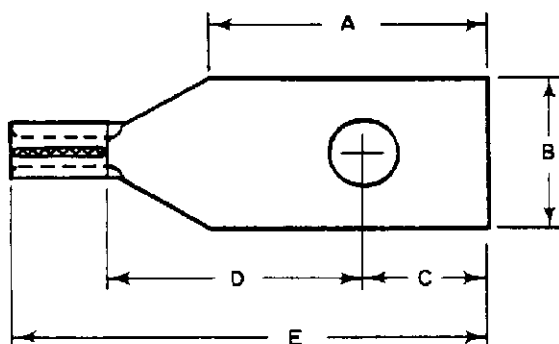




A-MP SOLISTRAND TERMINALS FOR
BU-SHIPS TERMINAL BLOCKS

IS 1088	
RELEASED	9-2-59
REVISED	4-20-60



Listed below are A-MP Long Barrel Solistrand Terminals for Bu-Ship Terminal Blocks. See A-MP Instruction Sheet No. 1198 for PIDG and Instruction Sheet No. 1207 for Diamond Grip (DG) Part Numbers.

BU-SHIPS BLOCKS	NAVY TONGUE SHAPE	NAVY WIRE SIZE	AWG WIRE SIZE	A ± .031	B ± .005	C ± .010	D MIN.	E MAX.	STUD SIZE	AMP PART NUMBER
3TB, 4TB 5TB, 16TB 17TB	L80	1-2	22-16	.701	.390	.321	.621	1.234	8	328351
		2½-4	16-14	.701	.390	.321	.621	1.234	8	328352
		6-9	12-10	.701	.390	.321	.621	1.234	8	328032
6TB, 7TB 9TB	L81	1-2	22-16	.482	.302	.227	.465	.984	6	328353
		2½-4	16-14	.482	.302	.227	.465	.984	6	328354
		6-9	12-10	.482	.302	.227	.465	.984	6	328035
15TB	L82	1-2	22-16	.482	.302	.227	.465	.984	8	328355
		2½-4	16-14	.482	.302	.227	.465	.984	8	328356
		6-9	12-10	.482	.302	.227	.465	.984	8	328038
8TB	L83	1-2	22-16	.328	.277	.167	.277	.734	5	328357
		2½-4	16-14	.328	.277	.167	.277	.734	5	328358
		6-9	12-10	.328	.277	.167	.277	.734	5	328041
10TB & 11TB	L84	1-2	22-16	.450	.237	.195	.404	.890	6	328359
		2½-4	16-14	.450	.237	.195	.404	.890	6	328360
		6-9	12-10	.450	.237	.195	.404	.890	6	328044
25TB	L85	1-2	22-16	.450	.237	.195	.404	.890	4	328361
		2½-4	16-14	.450	.237	.195	.404	.890	4	328362
		6-9	12-10	.450	.237	.195	.404	.890	4	328047
26TB	L86	1-2	22-16	.296	.237	.143	.237	.671	4	328363
		2½-4	16-14	.296	.237	.143	.237	.671	4	328364
		6-9	12-10	.296	.237	.143	.237	.671	4	328050

© Copyright 1960 by AMP Incorporated. All international rights reserved. A-MP® U. S. A. and foreign. A-MP® products covered by U. S. and foreign patents and/or patents pending.

单击下面可查看定价，库存，交付和生命周期等信息

[>>TE Connectivity\(泰科\)](#)