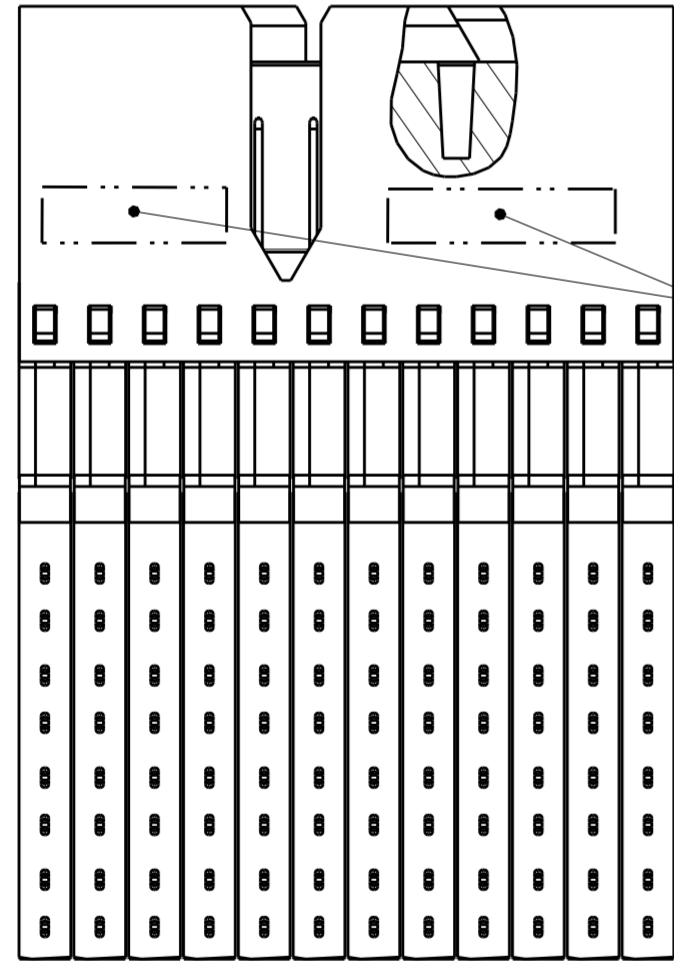
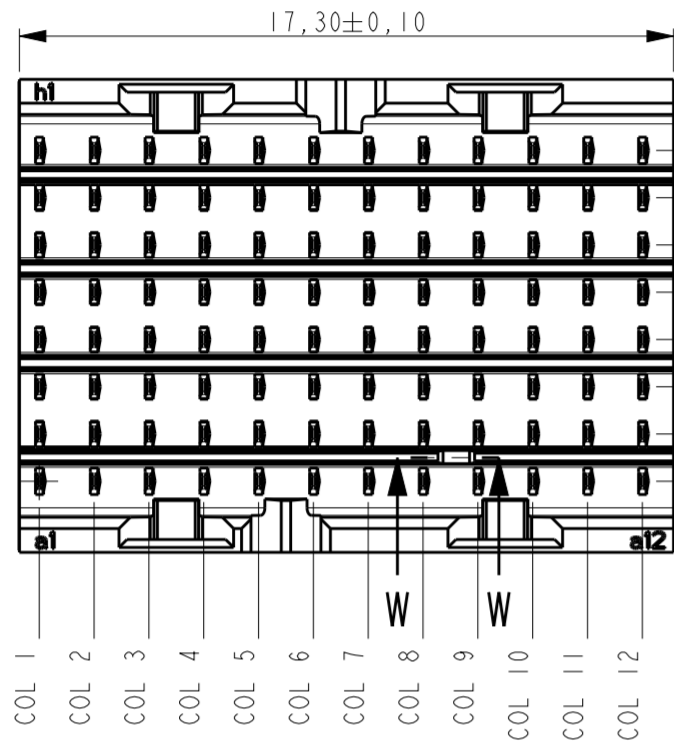
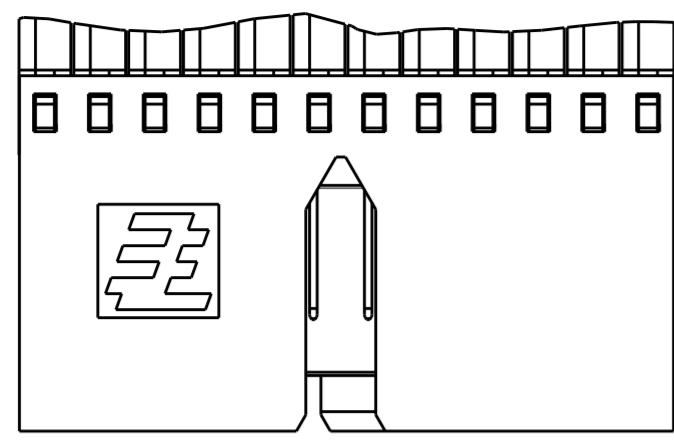


THIS DRAWING IS UNPUBLISHED. RELEASED FOR PUBLICATION  
 © COPYRIGHT - BY TYCO ELECTRONICS CORPORATION. ALL RIGHTS RESERVED.

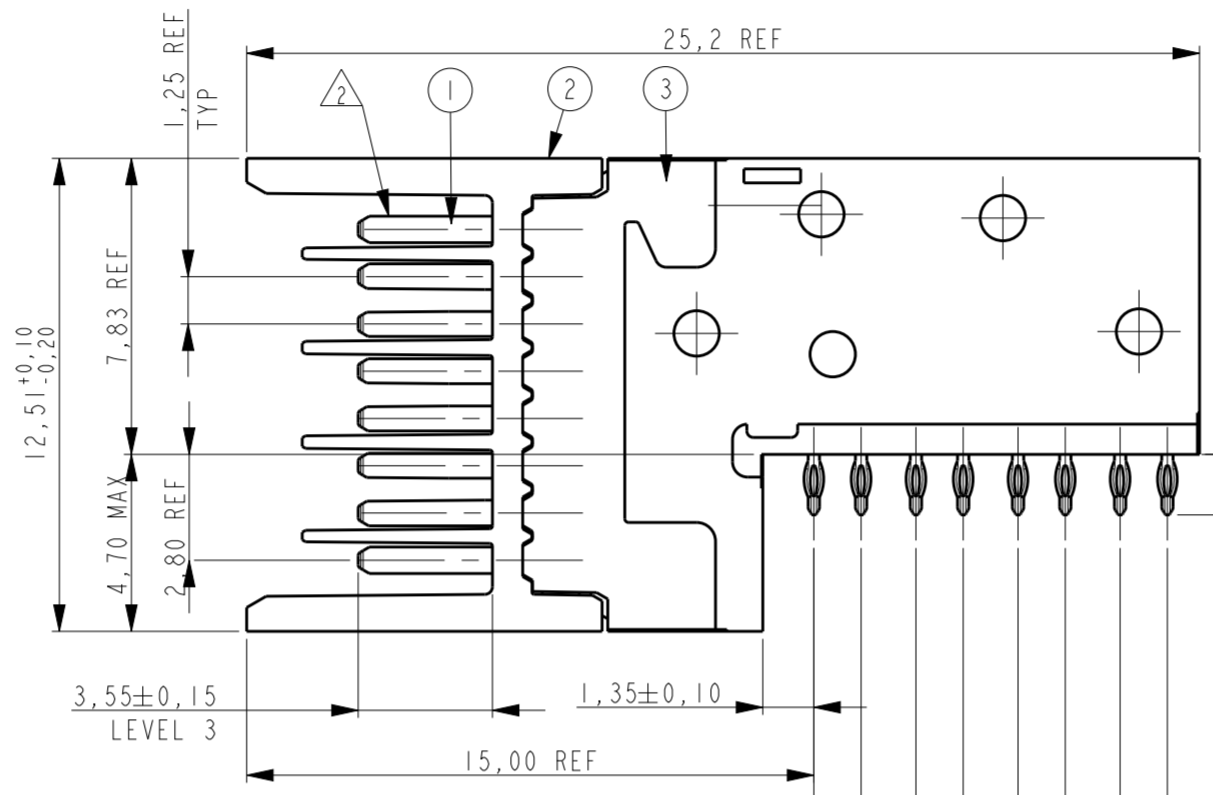
LOC		DIST		REVISIONS			
P	LTR	DESCRIPTION	DATE	DWN	APVD		
A		DRAWING RELEASED PER ECR-11-017294	22AUG2011	JvdH	TdB		
B		REVISED PER ECR-15-016753	24NOV2015	FL	FY		



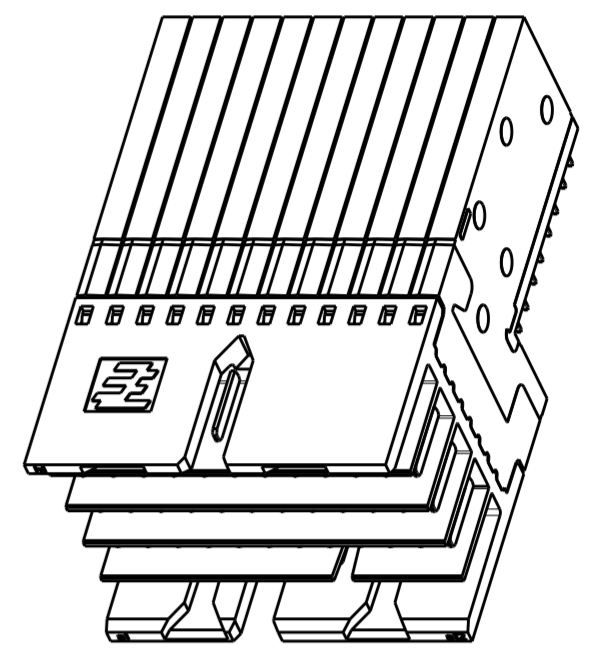
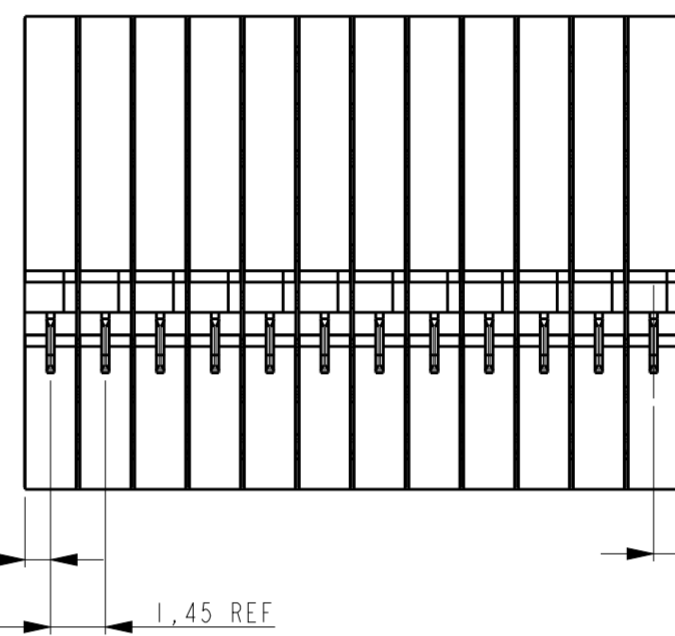
ROW h  
ROW g  
ROW f  
ROW e  
ROW d  
ROW c  
ROW b  
ROW a

COL 1 COL 2 COL 3 COL 4 COL 5 COL 6 COL 7 COL 8 COL 9 COL 10 COL 11 COL 12

SECTION W-W  
(KEY POSITION)

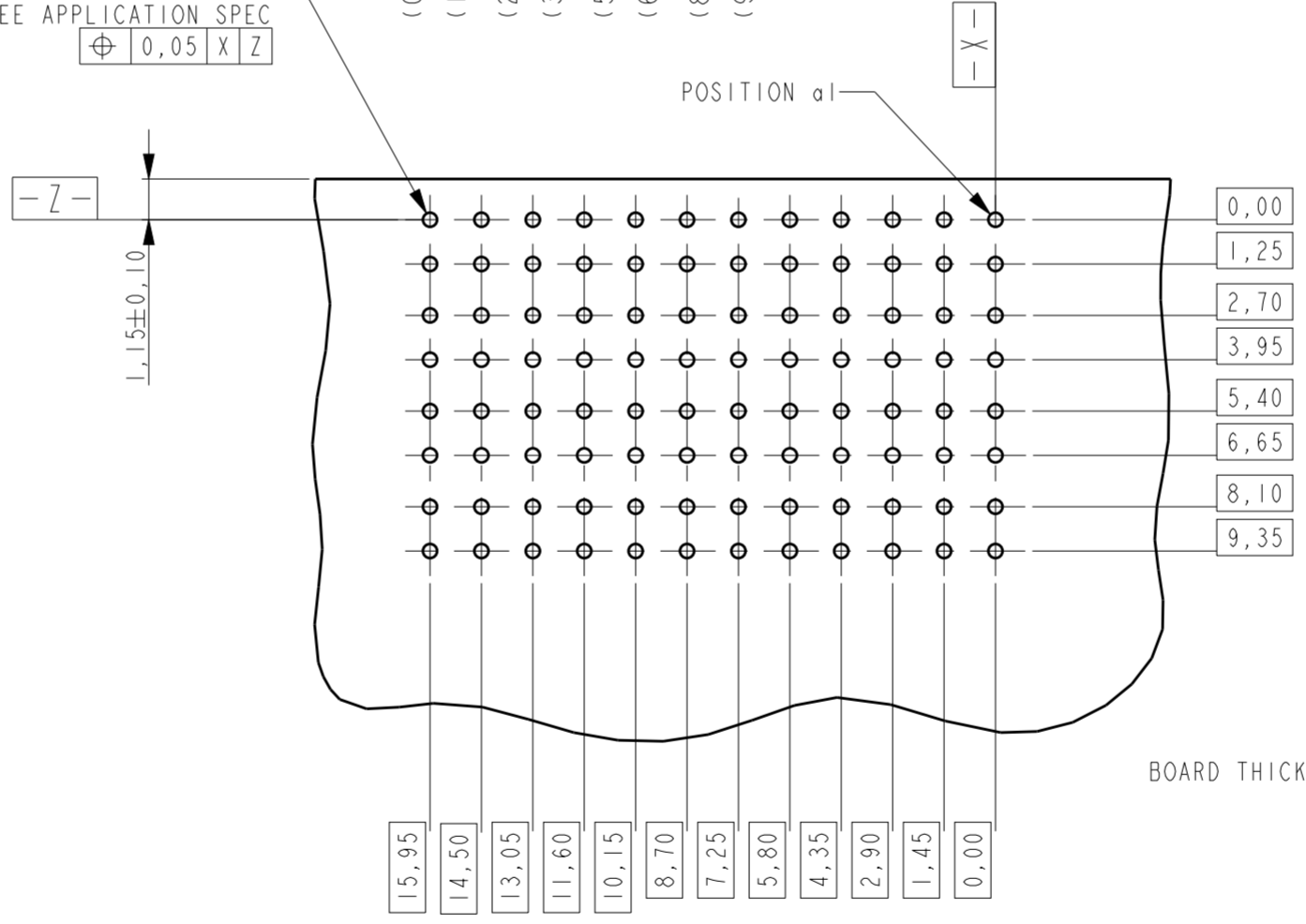


PCB LEVEL



SCALE 3:1

Ø0.40 REF FINISHED HOLE  
SEE APPLICATION SPEC  
⊕ 0.05 X Z



BOARD THICKNESS 1,2 MIN

RECOMMENDED PCB LAYOUT  
(COMPONENT SIDE SHOWN)

NOTES:

- 1 PLATING: 0,5µm MIN. TIN OVER NICKEL.
- 2 PLATING:

PARTNUMBER	PERFORMANCE LEVEL
2042162-1	PERFORMANCE LEVEL 1: CONNECTOR TESTED AND QUALIFIED AGAINST TELCORDIA GR-1217-CORE QUALITY LEVEL III: UNCONTROLLED ENVIRONMENT APPLICATIONS. SEE PRODUCT SPEC 108-19353
2042162-2	PERFORMANCE LEVEL 2: CONFORMS TO ALL TESTING ACCORDING PRODUCT SPEC 108-19320, -250 MATING CYCLES, 4 DAYS MIXED GAS TEST PER IEC 60068-2-60 METHOD 1

- 3 CONSULT APPLICATION SPEC OR CONTACT TE CONNECTIVITY FOR PERMISSIBLE CONTACT ASSIGNMENTS.
- 4 CONNECTOR MARKED WITH PARTNUMBER AND DATE CODE, DATE CODE DEFINITION: YYWWD.

THIS DRAWING IS A CONTROLLED DOCUMENT.

DIMENSIONS:	TOLERANCES UNLESS OTHERWISE SPECIFIED:
mm	
	0 PLC ±
	1 PLC ±
	2 PLC ±
	3 PLC ±
	4 PLC ±
	ANGLES ±
	FINISH ±

DWN	RA	21-Jan-09
CHK	RA	21-Jan-09
APVD	MW	21-Jan-09
PRODUCT SPEC	SEE NOTE 2	
APPLICATION SPEC	114-19106	
WEIGHT	-	
CUSTOMER DRAWING		

3	OVERMOLD	LCP 30% GF NATURAL
2	HOUSING	LCP 30% GF NATURAL
1	CONTACT	COPPER ALLOY
ITEM NO.	DESCRIPTION	MATERIAL



NAME			
RIGHT ANGLE MALE CONNECTOR Z-PACK Slim UHD High Speed			
SIZE	CAGE CODE	DRAWING NO	RESTRICTED TO
A2	00779	G-2042162	-
SCALE 5:1		SHEET 1 OF 1	REV B

单击下面可查看定价，库存，交付和生命周期等信息

[>>TE Connectivity\(泰科\)](#)