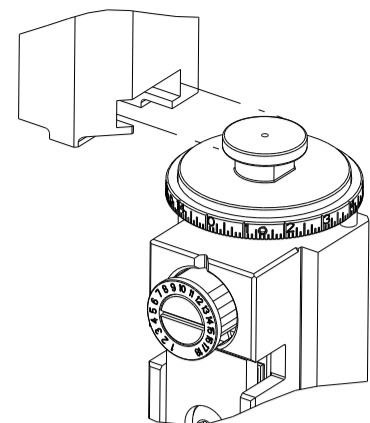


PART NUMBER	REVISION	DESCRIPTION	FEED TYPE
2151523-2	J	FINE CRIMP HEIGHT ADJUST	PNEUMATIC
7-2151523-2	J	PNEUMATIC AND CRIMP TOOLING KIT	PNEUMATIC
7-2151523-7	B	CRIMP TOOLING KIT	-

ATLANTIC VERSION TERMINATOR INTERFACE ADAPTER

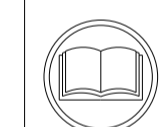


APPLICATOR DATA		
CRIMP	SIZE	TYPE
WIRE	1.07 mm [.042]	F
INSUL	1.07 mm [.042]	O

APPLICATOR INSTRUCTIONS 408-35042

TERMINAL DATA: TE TERMINAL		TE CRIMP SPECIFICATION	
TERMINAL NAME: NANO MQS TERMINAL			
WIRE STRIP LENGTH		INSULATION DIAMETER RANGE	
3.25-3.55mm [.128-.140 IN]		Ø 0.95-1.20mm [.037-.047 IN]	
TERMINAL APPLICATION SPECIFICATION (A)1114-18858			
TERMINALS APPLIED			
TE TERMINAL	TE TERMINAL	TE TERMINAL	TE TERMINAL
2-1703930-1	2-1703930-2	2-1703930-3	2-1703930-4

WIRE SIZE	CRIMP HEIGHT mm [INCH]	CRIMP HEIGHT REFERENCE SETTING
0.35mm2	0.78+/-0.02 [.031+/-0.001]	9.2
0.22mm2	0.70+/-0.02 [.028+/-0.001]	10.4



1. RECOMMENDED SPARE PARTS
2. REFER TO SUPPLIED INSTRUCTION SHEET FOR CLEANING, LUBRICATION AND STORAGE OF APPLICATOR.
3. APPLY PART NUMBER 2-23419-6 LOCTITE TO THREADS OF ITEM 242.
4. CRIMP HEIGHT REFERENCE SETTING WAS THE SETTING USED WHEN THE APPLICATOR WAS QUALIFIED AT THE FACTORY. ADJUSTMENT MAY BE NECESSARY WHEN RUNNING APPLICATOR IN THE FIELD.
5. PRODUCTION ONLY ALLOWED WITH TOOLS WITH PNEUMATIC FEED. MECHANICAL FEED IS NOT ALLOWED.
6. UNLESS SPECIFIED OTHERWISE TORQUE VALUES SHALL BE USED PER DOCUMENT, 101-35000.

**\*WARNING**  
ON INSTALLATION, SET WIRE DISC TO CRIMP HEIGHT REFERENCE SETTING FOR LARGEST WIRE SIZE. CRIMP HEIGHT REFERENCE SETTINGS GREATER THAN THE VALUE SHOWN MAY CAUSE DAMAGE TO THE CRIMP TOOLING. REFER TO THE INSTRUCTION SHEET FOR PROPER SETUP AND ADJUSTMENTS.

LOC	DIST	REVISIONS					
A	66	P	LTN	DESCRIPTION	DATE	DWN	APVD
		J		ECR-19-019777	20DEC2019	MZ	YY
		J1		ECR-21-003591	24MAR2021	FJ	GB
		J2		ECR-21-005672	21MAY2021	FJ	YY
		J3		ECR-22-128109	30JAN2022	FZ	YY

-	1	1	2119641-1	FEED CAM, AIR FEED	248
-	1	1	2119082-3	CAM, SNAIL, INSULATION ADJUSTMENT	244
-	1	1	2079764-1	WASHER, WAVE SPRING, CREST-TO-CREST	243
-	1	1	2119083-1	RETAINER, INSULATION DIAL	242
-	1	1	2844940-1	AIR FEED MODULE	238
-	REF	REF	994970-2	COUNTER, MAGNETIC	164
-	1	1	1-22281-8	SPRING, COMPRESSION	121
-	1	1	1-18028-2	WASHER, FLAT, REG M4	119
-	1	1	2844908-1	SCREW, LOCKING	99
-	1	1	2844907-1	POST, LOCKING	98
-	2	2	2168083-1	SCR, SKT HD CAP, RoHS, M3 X 8.0	96
-	1	1	1-690438-0	FRONT STRIP GUIDE	95
-	1	1	2168083-6	SCR, SKT HD CAP, RoHS, M5 X 65	93
-	1	1	455888-5	SPACER, CRIMPER	82
-	1	1	1803607-3	DOCUMENTATION PACKAGE	71
-	1	1	2119791-5	DEPRESSOR, WIRE	70
-	1	1	2119740-1	TAG IDENTIFICATION	67
-	2	2	2168078-1	SCREW, DRIVE, RH, RoHS, 2 x .188	66
-	1	1	2168083-2	SCR, SKT HD CAP, RoHS, M4 X 8.0	60
-	1	1	5-18022-5	SCR, HEX HD CAP, M4 X 6.0	59
-	1	1	1338685-1	PAWL, FEED	56
-	4	4	2168083-3	SCR, SKT HD CAP, RoHS, M4 X 12.0	54
-	2	2	2-2168083-5	SCR, SKT HD CAP, RoHS, M4 X 14	53
-	1	1	5018030-1	NUT, HEX, REG, RoHS, M3	52
-	1	1	811242-5	BUMPER, HOLD DOWN	51
-	1	1	690753-2	SPACER, TONKER	50
-	1	1	18023-9	SCR, SKT HD CAP M4 X 6.0	49
-	1	1	1803583-9	APPLICATOR BASIC ASSEMBLY, SF	46
-	1	1	1803515-1	RAM ASSEMBLY, SF ATLANTIC	44
-	1	1	1803602-1	SCR, BHSC, RoHS (M8 X 25)	41
-	1	1	2-18032-5	SCR, SET, FLT PNT, M5 X 20.0	36
-	1	1	1752356-6	SUPPORT, TERMINAL	34
-	2	2	2079383-5	SCR, BHSC, RoHS (M4 X 20)	33
-	1	1	2-1722335-1	THREAD BOLT GEWINDEBOLZEN	31
-	2	2	2-2844962-3	SPACER, CYLINDRICAL, STRIP GUIDE	30
-	1	1	2844938-1	PLATE, STRIP GUIDE	29
-	2	2	22283-1	SPRING, COMPRESSION	27
-	1	1	356835-1	LEVER, DRAG RELEASE	26
-	1	1	1803142-1	DRAG, TERMINAL	25
-	1	1	1320928-2	STRIP GUIDE	24
-	1	1	980371-4	SCR, SKT HD SHLDR 5.0 DIA X 6.0	23
-	1	1	2168083-2	SCR, SKT HD CAP, RoHS, M4 X 8.0	21
-	1	1	1-18028-2	WASHER, FLAT, REG M4	20
-	1	1	2119533-1	STRIPPER, SIDE FEED	19
-	1	1	3-22280-3	SPRING, COMPRESSION	12
-	1	1	2-519000-1	SCR, SKT HD CAP M4 X 10.0	11
-	1	1	2119805-1	SHEAR HOLDER, FRONT	10
-	1	1	1-1803095-9	FLOATING SHEAR, FRONT	9
-	1	2	1-1633620-2	ANVIL, COMBINATION	8
-	1	1	240641-7	SPACER	7
-	-	-	-	-	6
-	1	1	2119757-1	DEPRESSOR, SHEAR	5
-	1	1	5-238011-7	BLOCK, CRIMPER SPACER	4
-	1	2	1803143-2	CRIMPER, INSULATION O	3
-	-	-	-	-	2
-	1	2	2-1333281-7	CRIMPER, WIRE PREMIUM	1

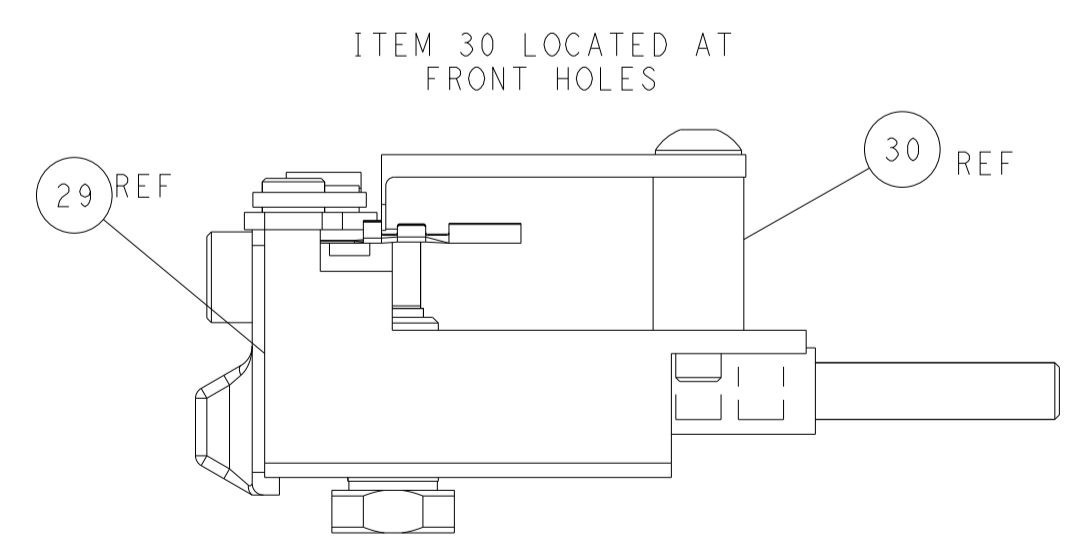
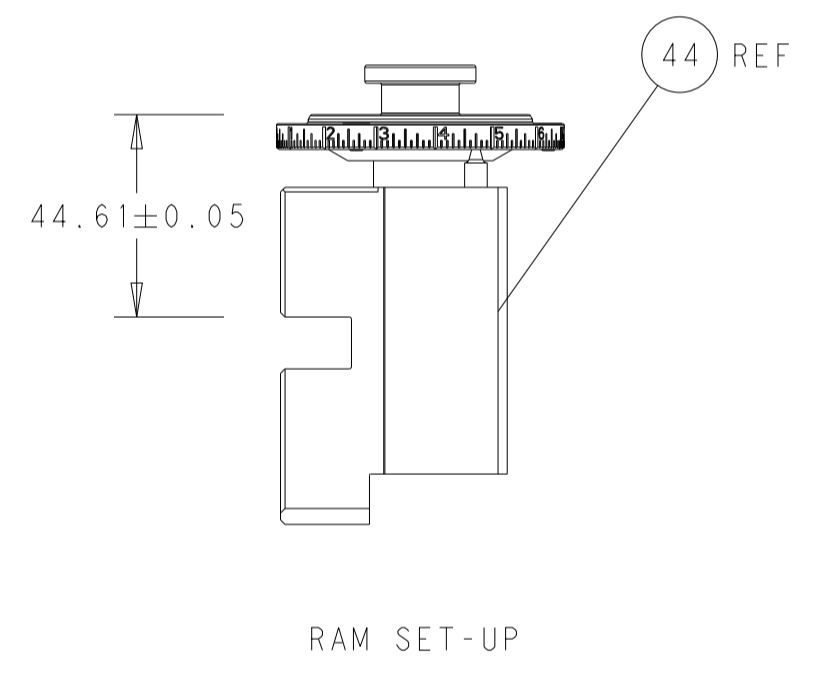
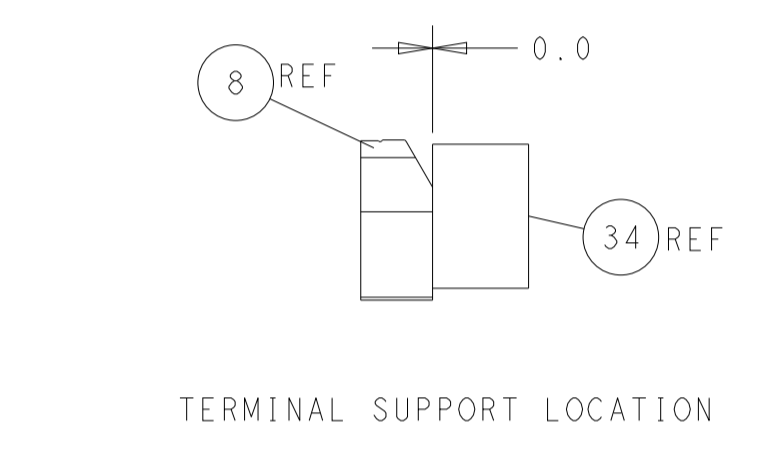
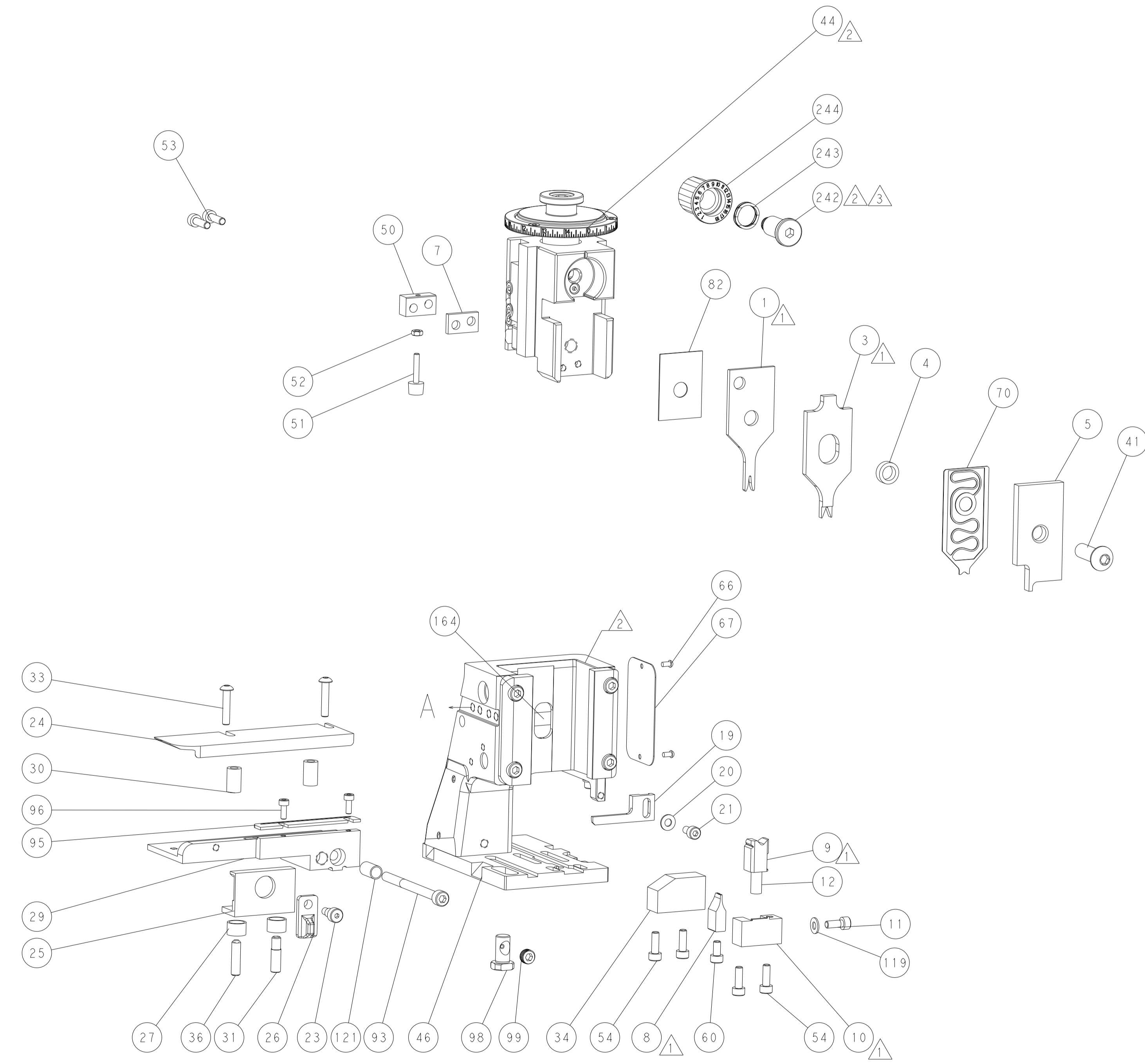
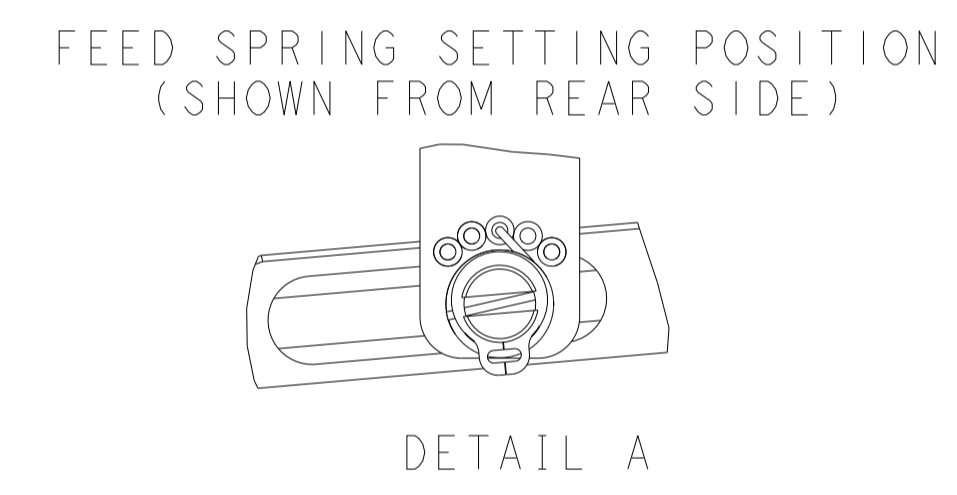
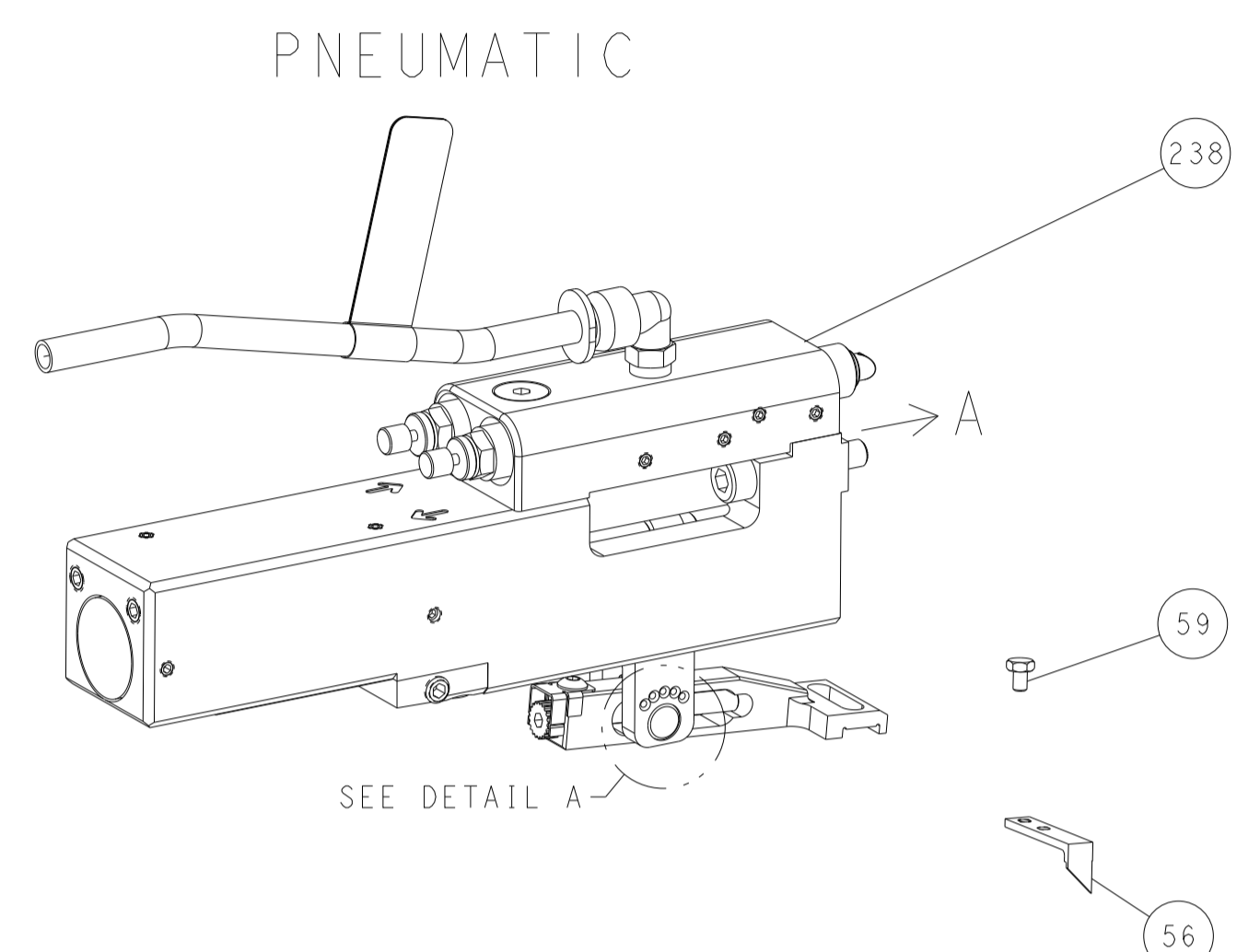
ATLANTIC VERSION  
Shown on sheets 1 of 4 & 2 of 4  
(Pacific version shown on sheets 3 of 4 & 4 of 4)

DIMENSIONS:		TOLERANCES UNLESS OTHERWISE SPECIFIED:		MATERIAL:		FINISH:	
mm	0 PLC ±	1 PLC ±	2 PLC ±	3 PLC ±	4 PLC ±	ANGLES ±	FINISH ±

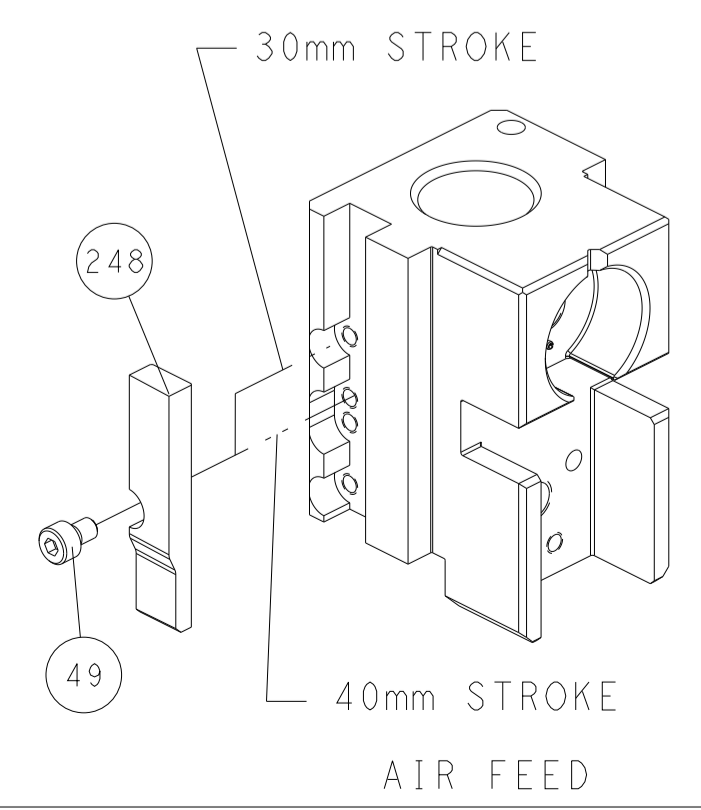
APVD	BOB HIGMAN 09MAY2013	CHK	G. BAILEY 09MAY2013	NAME	Ocean Side Feed Applicator
APVD	M. CLIFFORD 09MAY2013	PRODUCT SPEC		SIZE	A1
APVD		APPLICATION SPEC		CAGE CODE	00779
APVD				DRAWING NO	2151523
APVD				RESTRICTED TO	
APVD		WEIGHT		SCALE	1:2
APVD				SHEET	1 of 4
APVD				REV	J3

LOC	DIST	REVISIONS					
		P	LTN	DESCRIPTION	DATE	OWN	APVD
A	66	-	-	SEE SHEET 1	-	-	-

# FEED TYPE



# CAM POSITION



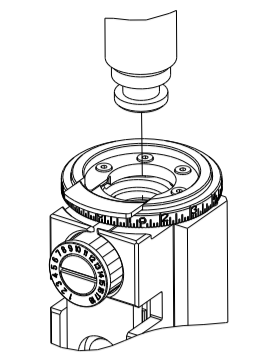
**ATLANTIC VERSION**  
 Shown on sheets 1 of 4 & 2 of 4  
 (Pacific version shown on sheets 3 of 4 & 4 of 4)

<small>THIS DRAWING IS UNPUBLISHED. RELEASED FOR PUBLICATION 20. COPYRIGHT 20 BY TYCO ELECTRONICS CORPORATION. ALL RIGHTS RESERVED.</small>		DWN BOB HIGMAN 09MAY2013 CHK G. BAILEY 09MAY2013 APVD M. CLIFFORD 09MAY2013	NAME Ocean Side Feed Applicator
DIMENSIONS: mm 0 PLC ± 1 PLC ± 2 PLC ± 3 PLC ± 4 PLC ± ANGLES ± FINISH ±	TOLERANCES UNLESS OTHERWISE SPECIFIED: 0 PLC ± 1 PLC ± 2 PLC ± 3 PLC ± 4 PLC ± ANGLES ± FINISH ±	WEIGHT -	SIZE CAGE CODE DRAWING NO RESTRICTED TO A1 00779 C=2151523 -
MATERIAL -		Customer Accessible Production Drawing	SCALE 1:2 SHEET 2 OF 4 REV J3



PART NUMBER	REVISION	DESCRIPTION	FEED TYPE
2-2151523-2	J	FINE CRIMP HEIGHT ADJUST	PNEUMATIC
7-2151523-7	B	CRIMP TOOLING KIT	-

PACIFIC VERSION TERMINATOR  
 INTERFACE ADAPTER



APPLICATOR DATA		
CRIMP	SIZE	TYPE
WIRE	1.07 mm [.042]	F
INSUL	1.07 mm [.042]	O

APPLICATOR INSTRUCTIONS  
 408-35042

TERMINAL DATA: TE TERMINAL TE CRIMP SPECIFICATION			
TERMINAL NAME: NANO MQS TERMINAL			
WIRE STRIP LENGTH	INSULATION DIAMETER RANGE		
3.25-3.55mm [.128-.140 IN]	Ø 0.95-1.20mm [.037-.047 IN]		
TERMINAL APPLICATION SPECIFICATION (A)1114-18858			
TERMINALS APPLIED 5			
TE TERMINAL	TE TERMINAL	TE TERMINAL	TE TERMINAL
2-1703930-1	2-1703930-2	2-1703930-3	2-1703930-4

WIRE SIZE	CRIMP HEIGHT mm [INCH]	CRIMP HEIGHT REFERENCE SETTING
0.35mm2	0.78+/-0.02 [.031+/- .001]	9.2
0.22mm2	0.70+/-0.02 [.028+/- .001]	10.4

- RECOMMENDED SPARE PARTS
- REFER TO SUPPLIED INSTRUCTION SHEET FOR CLEANING, LUBRICATION AND STORAGE OF APPLICATOR.
- APPLY PART NUMBER 2-23419-6 LOCTITE TO THREADS OF ITEM 242.
- CRIMP HEIGHT REFERENCE SETTING WAS THE SETTING USED WHEN THE APPLICATOR WAS QUALIFIED AT THE FACTORY. ADJUSTMENT MAY BE NECESSARY WHEN RUNNING APPLICATOR IN THE FIELD.
- PRODUCTION ONLY ALLOWED WITH TOOLS WITH PNEUMATIC FEED. MECHANICAL FEED IS NOT ALLOWED.
- UNLESS SPECIFIED OTHERWISE TORQUE VALUES SHALL BE USED PER DOCUMENT, 101-35000.

LOC	DIST	REVISIONS					
A	66	P	LTN	DESCRIPTION	DATE	OWN	APVD
-	-	-	-	SEE SHEET 1	-	-	-

-	1	2119082-3	CAM, SNAIL, INSULATION ADJUSTMENT	244
-	1	2079764-1	WASHER, WAVE SPRING, CREST-TO-CREST	242
-	1	2119083-1	RETAINER, INSULATION DIAL	238
-	1	2844940-1	AIR FEED MODULE	164
-	REF	994970-2	COUNTER, MAGNETIC	151
-	1	2119641-2	FEED CAM, AIR FEED	144
-	1	2168083-8	SCR, SKT HD CAP, RoHS, M4 X 16	143
-	4	2168083-9	SCR, SKT HD CAP, RoHS, M4 X 20	141
-	1	1-1803583-0	APPLICATOR BASIC ASSEMBLY, SF	140
-	1	1803516-1	RAM ASSEMBLY, SF PACIFIC	121
-	1	1-22281-8	SPRING, COMPRESSION	119
-	1	1-18028-2	WASHER, FLAT, REG M4	99
-	1	2844908-1	SCREW, LOCKING	98
-	1	2844907-1	POST, LOCKING	96
-	2	2168083-1	SCR, SKT HD CAP, RoHS, M3 X 8.0	95
-	1	1-690438-0	FRONT STRIP GUIDE	93
-	1	2168083-6	SCR, SKT HD CAP, RoHS, M5 X 65	82
-	1	455888-5	SPACER, CRIMPER	71
-	1	1803607-3	DOCUMENTATION PACKAGE	70
-	1	2119791-5	DEPRESSOR, WIRE	67
-	1	2119740-1	TAG, IDENTIFICATION	66
-	2	2168078-1	SCREW, DRIVE, RH, RoHS, 2 x .188	59
-	1	5-18022-5	SCR, HEX HD CAP, M4 X 6.0	56
-	1	1338685-1	PAWL, FEED	53
-	2	2-2168083-5	SCR, SKT HD CAP, RoHS, M4 X 14	52
-	1	5018030-1	NUT, HEX, REG, RoHS, M3	51
-	1	811242-5	BUMPER, HOLD DOWN	50
-	1	690753-2	SPACER, TONKER	49
-	1	18023-9	SCR, SKT HD CAP M4 X 6.0	41
-	1	1803602-1	SCR, BHSC, RoHS (M8 X 25)	36
-	1	2-18032-5	SCR, SET, FLT PNT, M5 X 20.0	34
-	1	1752356-6	SUPPORT, TERMINAL	33
-	2	2079383-5	SCR, BHSC, RoHS (M4 X 20)	31
-	1	2-1722335-1	THREAD BOLT GEWINDEBOLZEN	30
-	2	2-2844962-3	SPACER, CYLINDRICAL, STRIP GUIDE	29
-	1	2844938-1	PLATE, STRIP GUIDE	27
-	2	22283-1	SPRING, COMPRESSION	26
-	1	356835-1	LEVER, DRAG RELEASE	25
-	1	1803142-1	DRAG, TERMINAL	24
-	1	1320928-2	STRIP GUIDE	23
-	1	980371-4	SCR, SKT HD SHLDR 5.0 DIA X 6.0	21
-	1	2168083-2	SCR, SKT HD CAP, RoHS, M4 X 8.0	20
-	1	1-18028-2	WASHER, FLAT, REG M4	19
-	1	2119533-1	STRIPPER, SIDE FEED	12
-	1	3-22280-3	SPRING, COMPRESSION	11
-	1	2-519000-1	SCR, SKT HD CAP M4 X 10.0	10
-	1	2119805-1	SHEAR HOLDER, FRONT	9
-	1	1-1803095-9	FLOATING SHEAR, FRONT	8
-	1	1-1633620-2	ANVIL, COMBINATION	7
-	1	240641-7	SPACER	6
-	-	-	-	5
-	1	2119757-1	DEPRESSOR, SHEAR	4
-	1	5-238011-7	BLOCK, CRIMPER SPACER	3
-	1	1803143-2	CRIMPER, INSULATION O	2
-	-	-	-	1
-	1	2-1333281-7	CRIMPER, WIRE PREMIUM	1

**\*WARNING**  
 ON INSTALLATION, SET WIRE DISC TO CRIMP HEIGHT REFERENCE SETTING FOR LARGEST WIRE SIZE. CRIMP HEIGHT REFERENCE SETTINGS GREATER THAN THE VALUE SHOWN MAY CAUSE DAMAGE TO THE CRIMP TOOLING. REFER TO THE INSTRUCTION SHEET FOR PROPER SETUP AND ADJUSTMENTS.

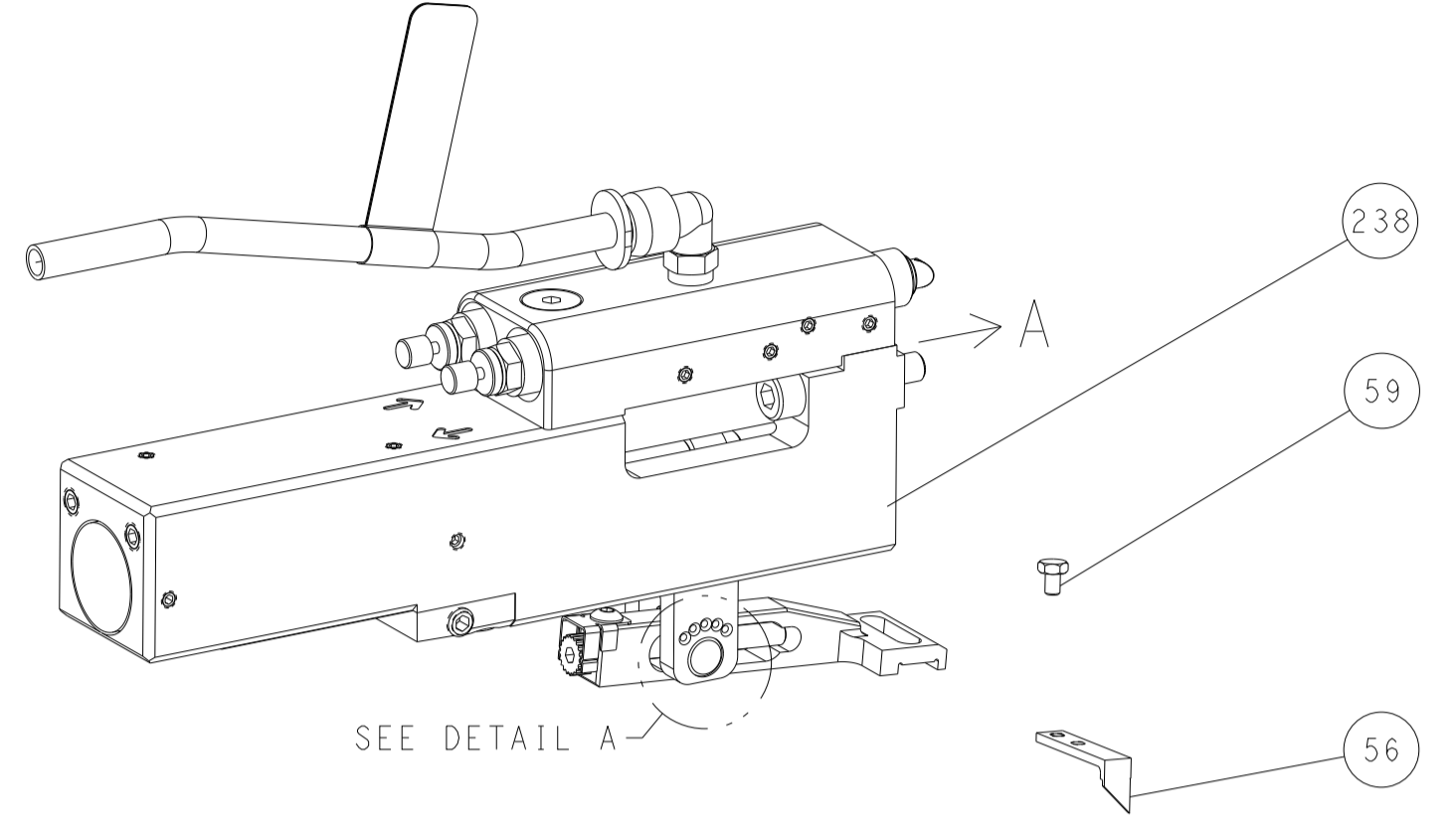
PACIFIC VERSION  
 Shown on sheets 3 of 4 & 4 of 4  
 (Atlantic version shown on sheets 1 of 4 & 2 of 4)

DIMENSIONS: mm 0 PLC ± 1 PLC ± 2 PLC ± 3 PLC ± 4 PLC ± ANGLES ± FINISH		TOLERANCES UNLESS OTHERWISE SPECIFIED: ±		DWG: BOB HIGMAN 09MAY2013 CHK: G. BAILEY 09MAY2013 APVD: M. CLIFFORD 09MAY2013 PRODUCT SPEC APPLICATION SPEC WEIGHT: - SCALE: 1:2 SHEET 3 OF 4 REV J3		NAME: Ocean Side Feed Applicator SIZE: A1 CAGE CODE: 00779 DRAWING NO: 2151523 RESTRICTED TO: -	
---	--	---	--	---	--	---	--

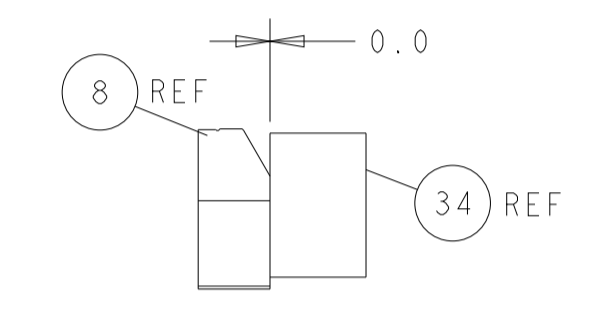
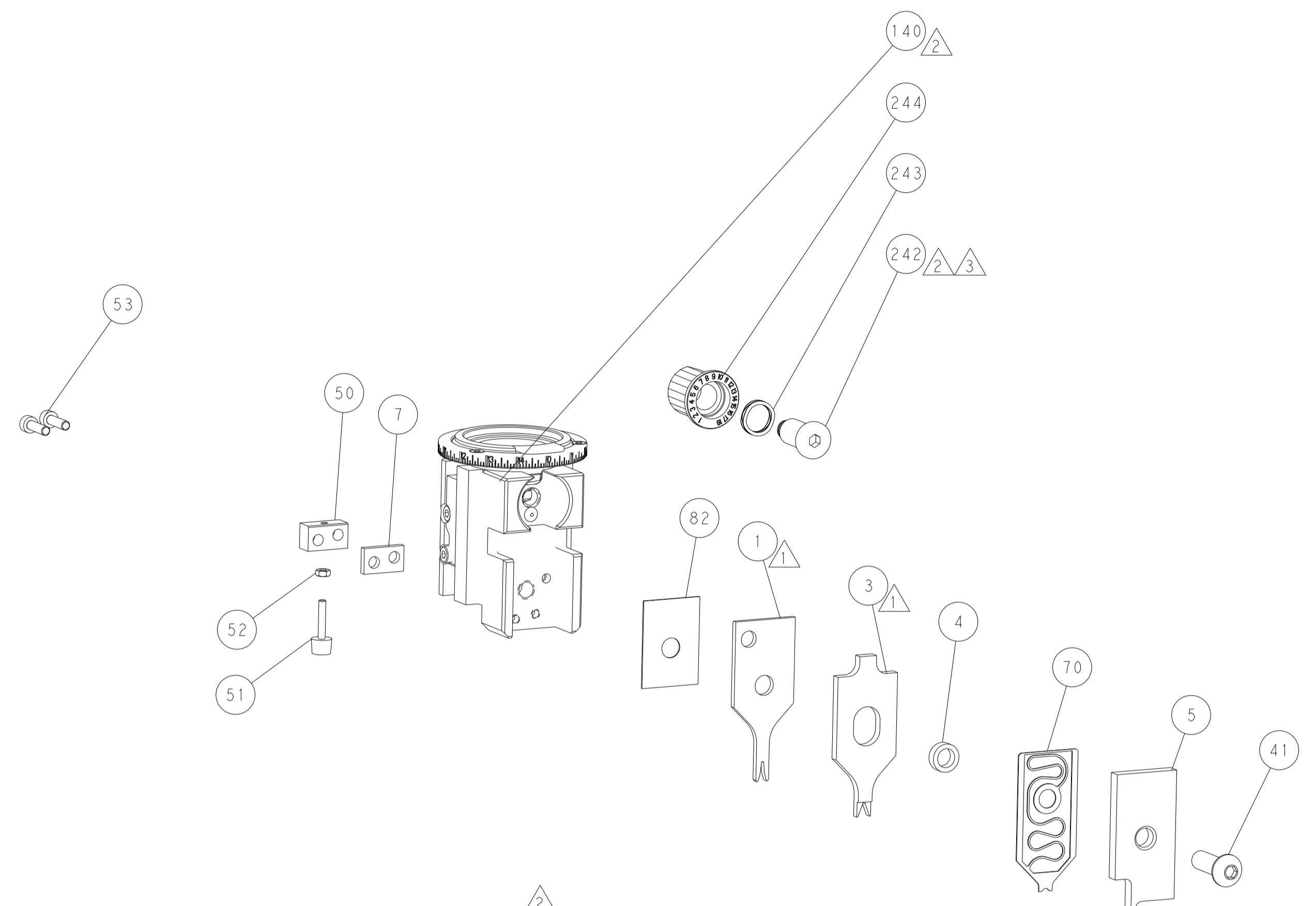
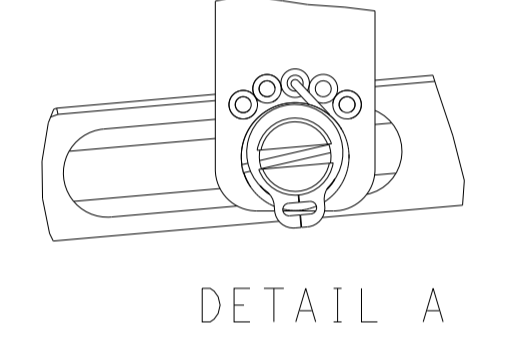
LOC	DIST	REVISIONS					
A	66	P	LTN	DESCRIPTION	DATE	OWN	APVD
		-		SEE SHEET 1			

# FEED TYPE

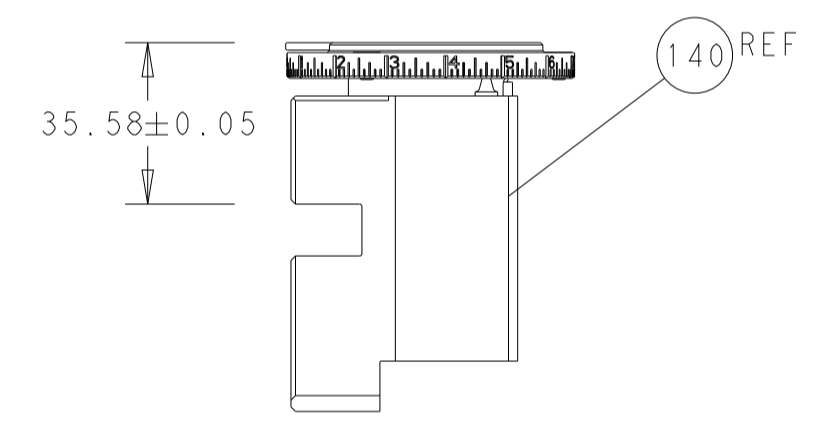
## PNEUMATIC



## FEED SPRING SETTING POSITION (SHOWN FROM REAR SIDE)

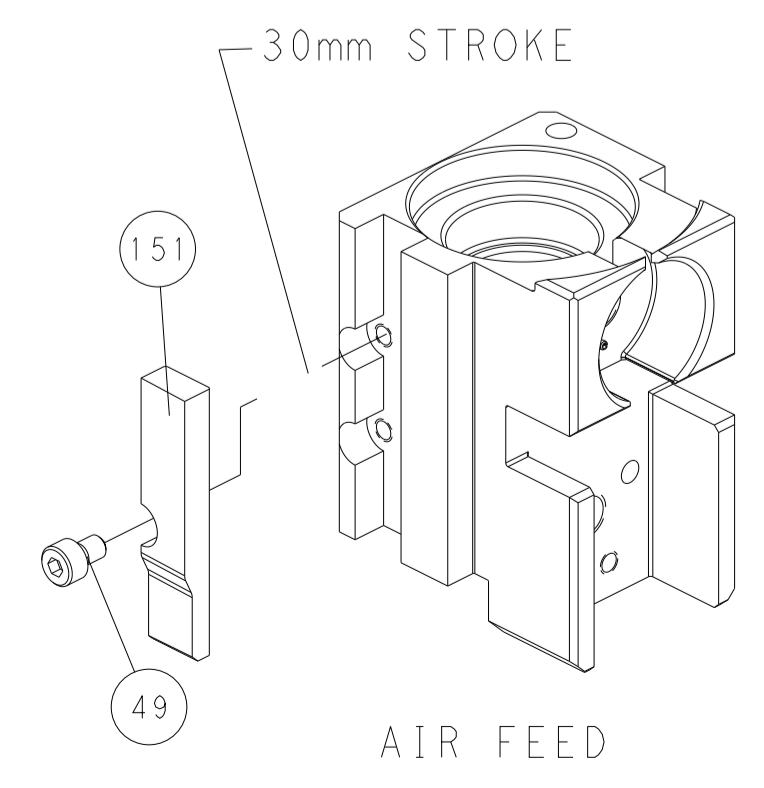


TERMINAL SUPPORT LOCATION

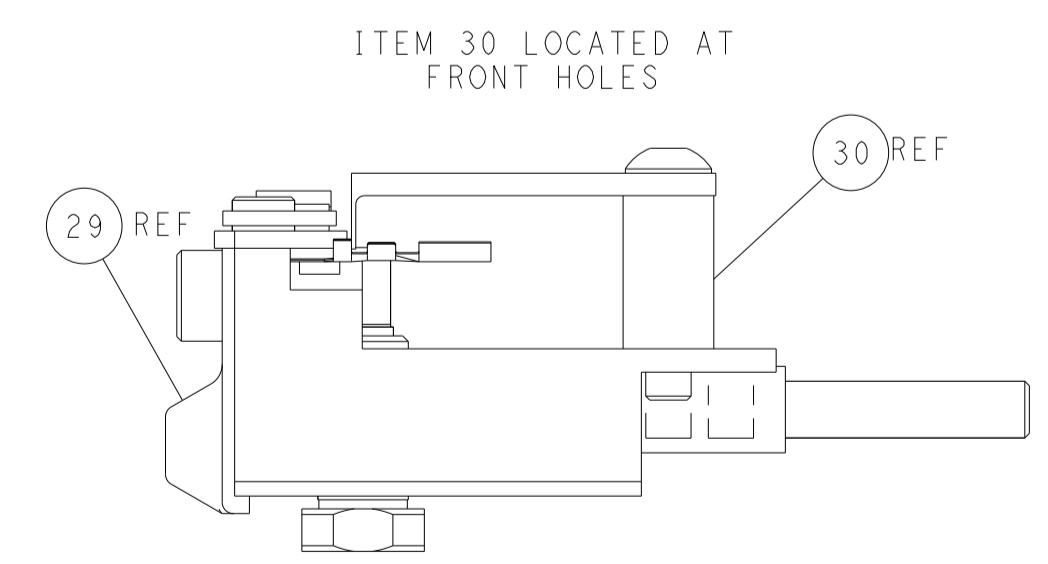
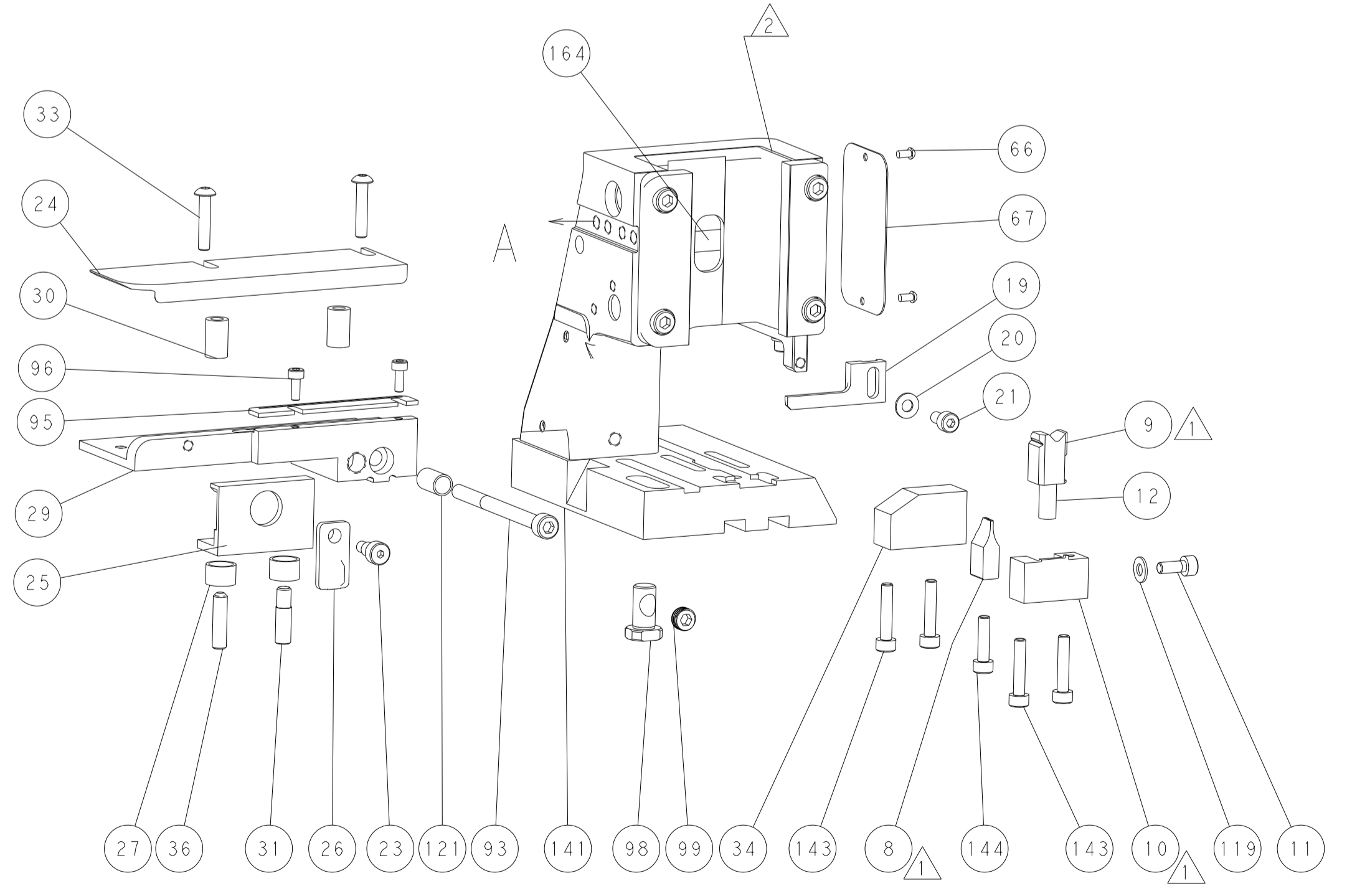


RAM SET-UP

## CAM POSITION



AIR FEED



FEED TRACK POSITION GUIDE BY INSULATION BARREL

**PACIFIC VERSION**  
 Shown on sheets 3 of 4 & 4 of 4  
 (Atlantic version shown on sheets 1 of 4 & 2 of 4)

<small>THIS DRAWING IS UNPUBLISHED. RELEASED FOR PUBLICATION BY TYCO ELECTRONICS CORPORATION. ALL RIGHTS RESERVED.</small>		DWN BOB HIGMAN 09MAY2013 CHK G. BAILEY 09MAY2013 APVD M. CLIFFORD 09MAY2013	NAME Ocean Side Feed Applicator
DIMENSIONS: mm 0 PLC ± 1 PLC ± 2 PLC ± 3 PLC ± 4 PLC ± ANGLES ± FINISH ±	TOLERANCES UNLESS OTHERWISE SPECIFIED: ± ± ± ± ± ±	SIZE CAGE CODE DRAWING NO A 00779 C-2151523	RESTRICTED TO Customer Accessible Production Drawing
MATERIAL:		WEIGHT:	SCALE 1:2 SHEET 4 OF 4 REV J3

单击下面可查看定价，库存，交付和生命周期等信息

[>>TE Connectivity\(泰科\)](#)