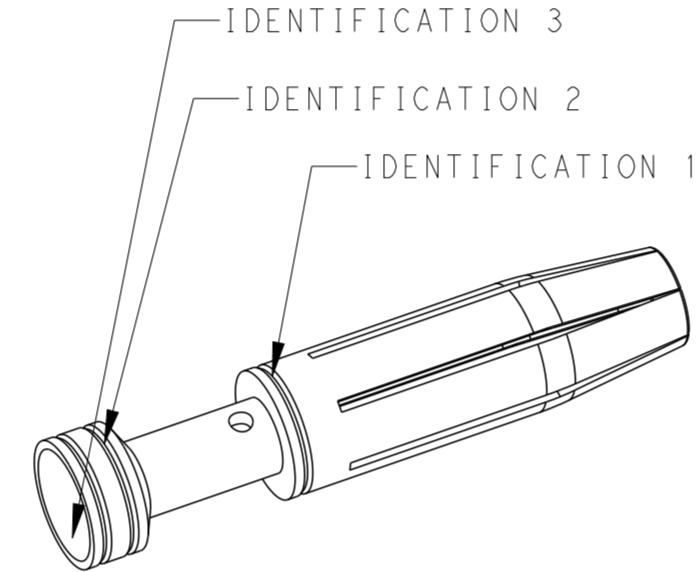
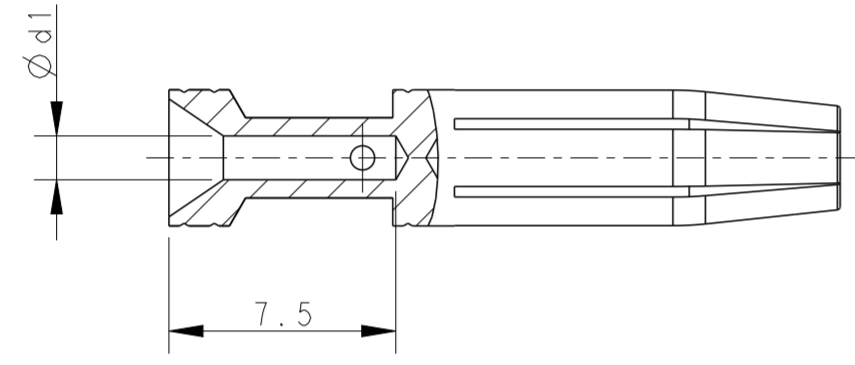
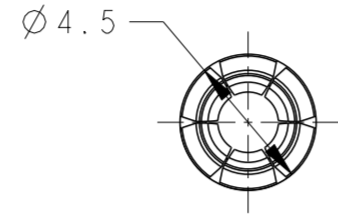
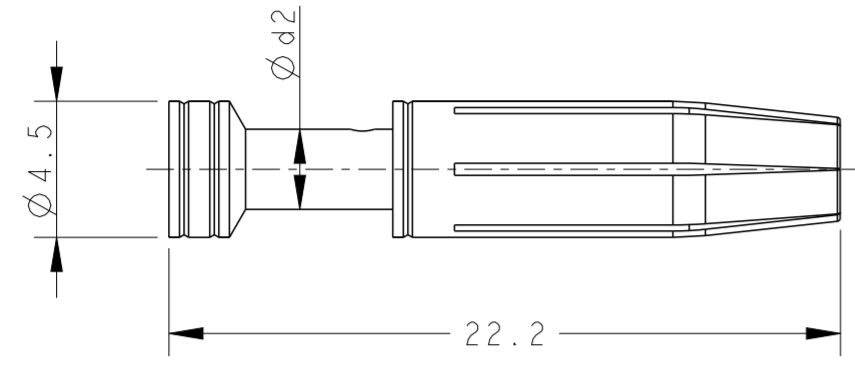


REVISIONS				
P	LTR	DESCRIPTION	DATE	APVD
	A	INITIAL	26OCT2021	DW CW
	A1	ECR-22-130866	04MAR2022	DW CW
	A2	ECR-23-165126	02FEB2023	DW CW



NOTES:

1. TECHNICAL CHARACTERISTICS:
 CONTACT MATERIAL: BRASS
 SURFACE PLATING: SILVER
 CONTACT RESISTANCE: <=5 mΩ
 WIRE RANGE: 0.14-4 mm² (26-12 AWG)

注释:
 1. 技术参数:
 公针材料: 黄铜
 表面电镀: 镀银
 接触电阻: <=5 mΩ
 接线范围: 0.14-4 mm² (26-12 AWG)

PART NUMBER 料号	PART DESCRIPTION 描述	∅ d1	∅ d2	WIRE GAUGE 线规		STRIPPING LENGTH 剥线长度 (mm)	IDENTIFICATION 1 识别1 (NUMBER OF GROOVES 沟槽数量)	IDENTIFICATION 2 识别2 (NUMBER OF GROOVES 沟槽数量)	IDENTIFICATION 3 识别3 (NUMBER OF GROOVES 沟槽数量)
				MM ²	AWG				
T2030032002-000	HEF-0.3, SILVER PLATING HEF母针0.14-0.37mm ² , 镀银, 高插拔	0.90	2.50	0.14-0.37	26-22	7.5	1 GROOVE	1 GROOVE	1 GROOVE
T2030032005-000	HEF-0.5, SILVER PLATING HEF母针0.5mm ² , 镀银, 高插拔	1.15	2.50	0.5	20		NO GROOVE	NO GROOVE	1 GROOVE
T2030032008-000	HEF-0.75, SILVER PLATING HEF母针0.75mm ² , 镀银, 高插拔	1.30	2.50	0.75	18		NO GROOVE	1 GROOVE	1 GROOVE
T2030032010-000	HEF-1.0, SILVER PLATING HEF母针1.0mm ² , 镀银, 高插拔	1.45	2.65	1.0	18		1 GROOVE	NO GROOVE	1 GROOVE
T2030032015-000	HEF-1.5, SILVER PLATING HEF母针1.5mm ² , 镀银, 高插拔	1.75	3.00	1.5	16		2 GROOVES	NO GROOVE	1 GROOVE
T2030032025-000	HEF-2.5, SILVER PLATING HEF母针2.5mm ² , 镀银, 高插拔	2.25	3.45	2.5	14		3 GROOVES	NO GROOVE	1 GROOVE
T2030032030-000	HEF-3.0, SILVER PLATING HEF母针3.0mm ² , 镀银, 高插拔	2.55	3.75	3.0	12		1 WIDE GROOVE	1 GROOVE	1 GROOVE
T2030032040-000	HEF-4.0, SILVER PLATING HEF母针4.0mm ² , 镀银, 高插拔	2.85	3.85	4.0	12		NO GROOVE	NO GROOVE	1 GROOVE

THIS DRAWING IS A CONTROLLED DOCUMENT.

DWN DAVID WANG 26OCT2021
 CHK GINO YAO 26OCT2021
 APVD CHRIS WANG 26OCT2021

TE TE Connectivity

NAME HEF EE SOCKET CONTACT

SIZE A2 CAGE CODE 00779 DRAWING NO T20300320XX000 RESTRICTED TO -

CUSTOMER DRAWING SCALE 4:1 SHEET 1 OF 1 REV A2

单击下面可查看定价，库存，交付和生命周期等信息

[>>TE Connectivity\(泰科\)](#)