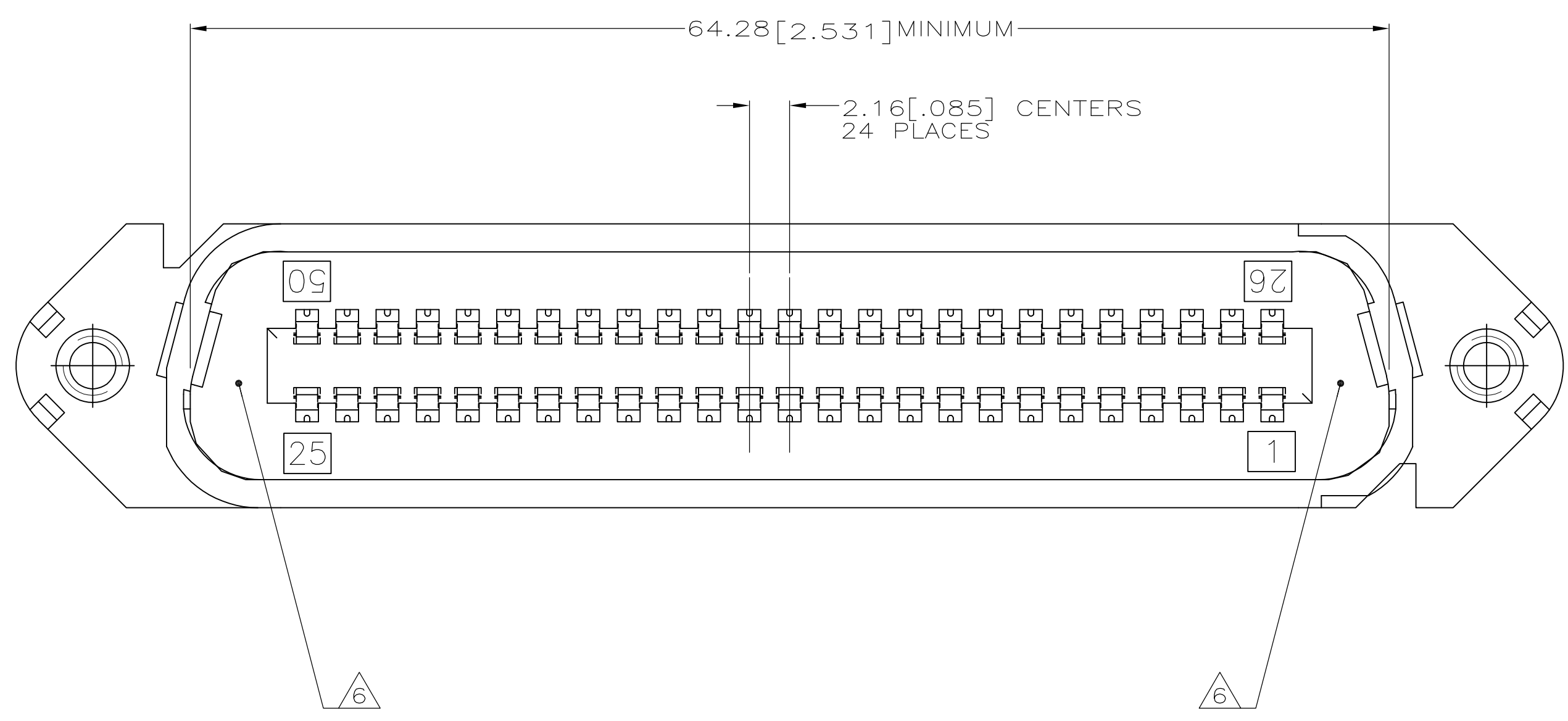
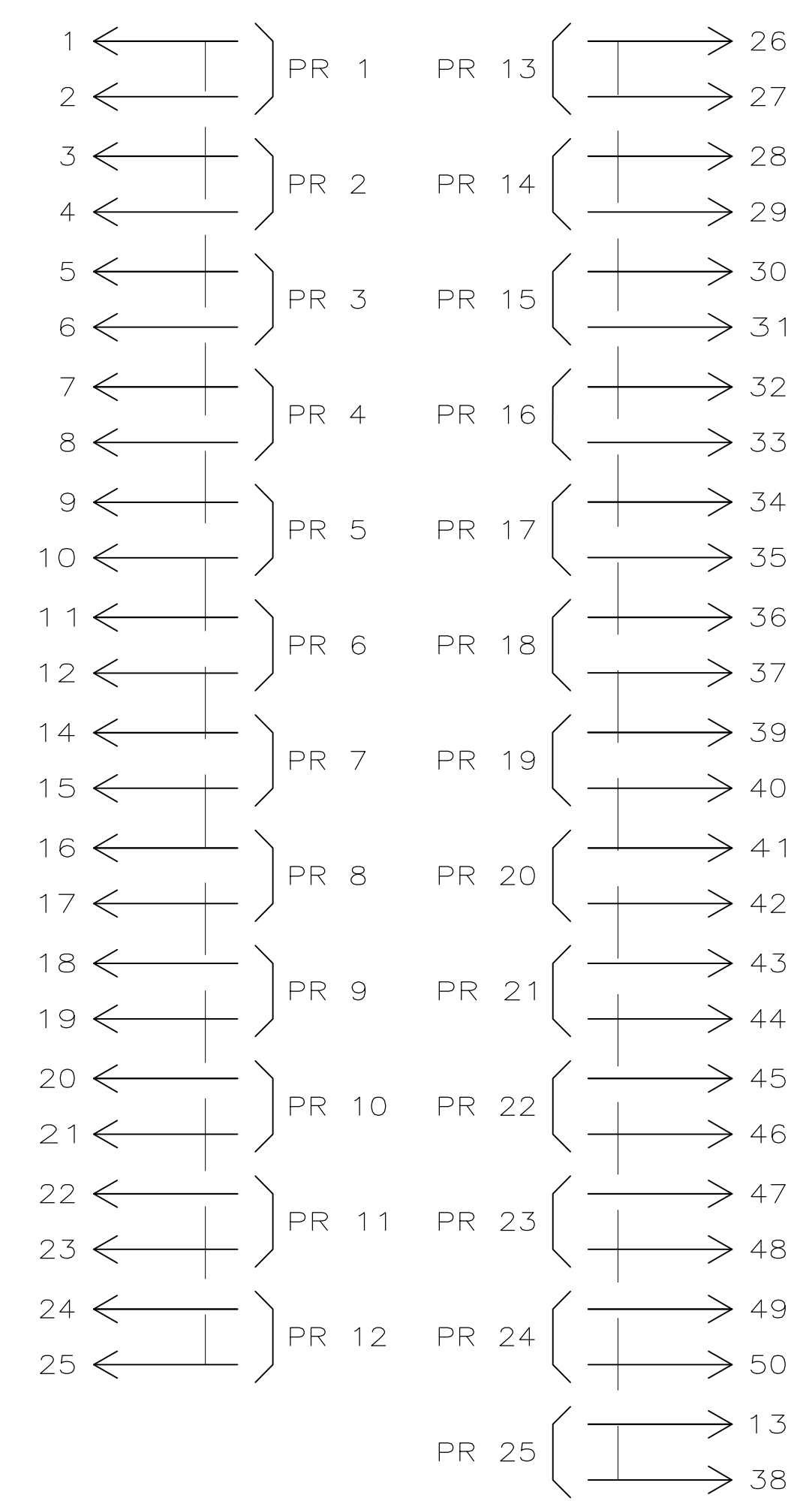
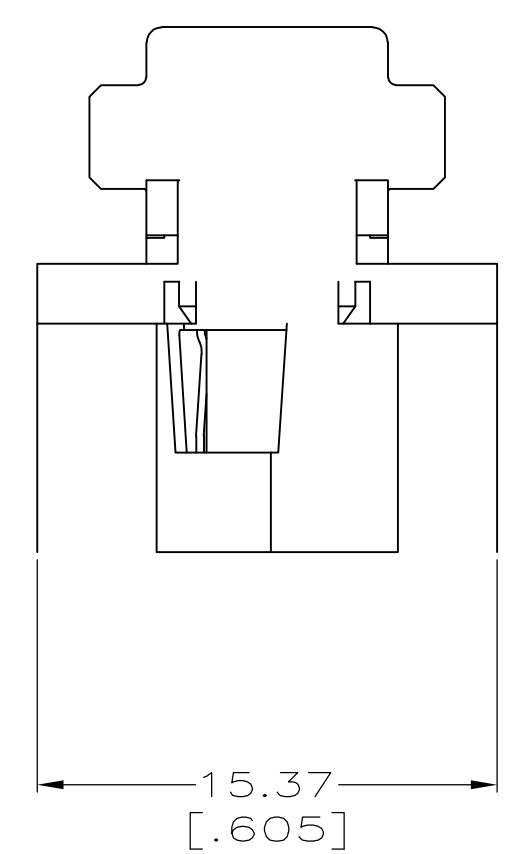
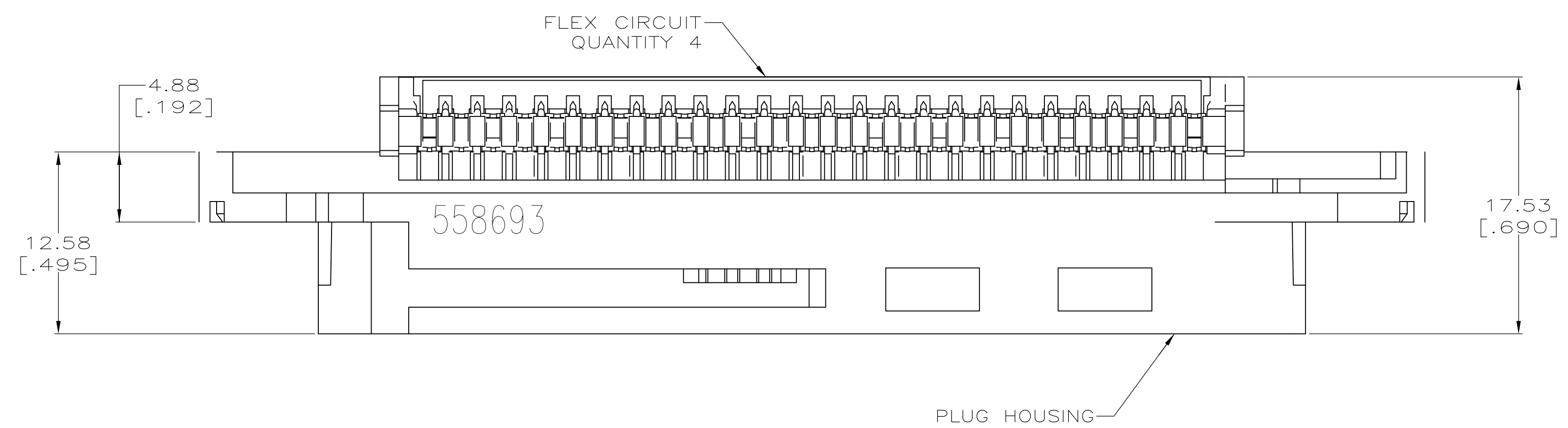


- ⚠ MATERIAL:
 HOUSING - POLYPHENYLENE OXIDE MOLDING COMPOUND, SEE TABLE FOR COLOR.
 TERMINALS - PHOS BRONZE PLATED WITH EITHER .76μm [.000030] MIN GOLD OR GOLD FLASH OVER PALLADIUM NICKEL .76μm [.000030] MIN TOTAL, ON CONTACT MATING SURFACE. 1.27μm [.000050] MIN NICKEL UNDERPLATE OVER ENTIRE TERMINAL.
 FLEX CIRCUIT - COPPER LAMINATE POLYESTER FILM.
2. THE CONTACT SURFACES OF THE TERMINALS ARE COATED WITH LUBRICANT.
- ⚠ DIMENSIONS ARE MAXIMUM UNLESS OTHERWISE SPECIFIED.
4. WIRE SIZE: 24-26 AWG SOLID OR 24-7 STRAND COPPER CONDUCTORS. MAXIMUM INSULATION OF Ø1.14 [.045] IS ACCEPTABLE FOR MOST APPLICATIONS.
- ⚠ 558693-1 HAS BEEN SUPERSEDED BY 1-558693-1 (ONLY DIFFERENCE IS HOUSING COLOR).
- ⚠ SINK IS ACCEPTABLE IN AREA INDICATED.



CHAMP CATEGORY 5
WIRING PATTERN

RED	1-558693-1
BLACK	558693-1
COLOR	PART NUMBER

THIS DRAWING IS A CONTROLLED DOCUMENT.		DRN D. DRUMMOND 04 OCT 94	Tyco Electronics Corporation Harrisburg, PA 17105-3608
DIMENSIONS: mm [INCHES]		CHK B. FOX 12 DEC 94	
TOLERANCES UNLESS OTHERWISE SPECIFIED:		APPROV M. MILLER 20 DEC 94	NAME PLUG ASSEMBLY, 50 POSITION, A-SLOT, CHAMP SYSTEM 5
0 PLC ± -		PRODUCT SPEC	
1 PLC ± -		APPLICATION SPEC	SIZE
2 PLC ± -		WEIGHT	CAGE CODE
3 PLC ± -		CUSTOMER DRAWING	DRAWING NO
4 PLC ± -		SCALE 4:1	RESTRICTED TO
ANGLES ± -		SHEET 1 OF 1	REV H
FINISH			

单击下面可查看定价，库存，交付和生命周期等信息

[>>TE Connectivity\(泰科\)](#)