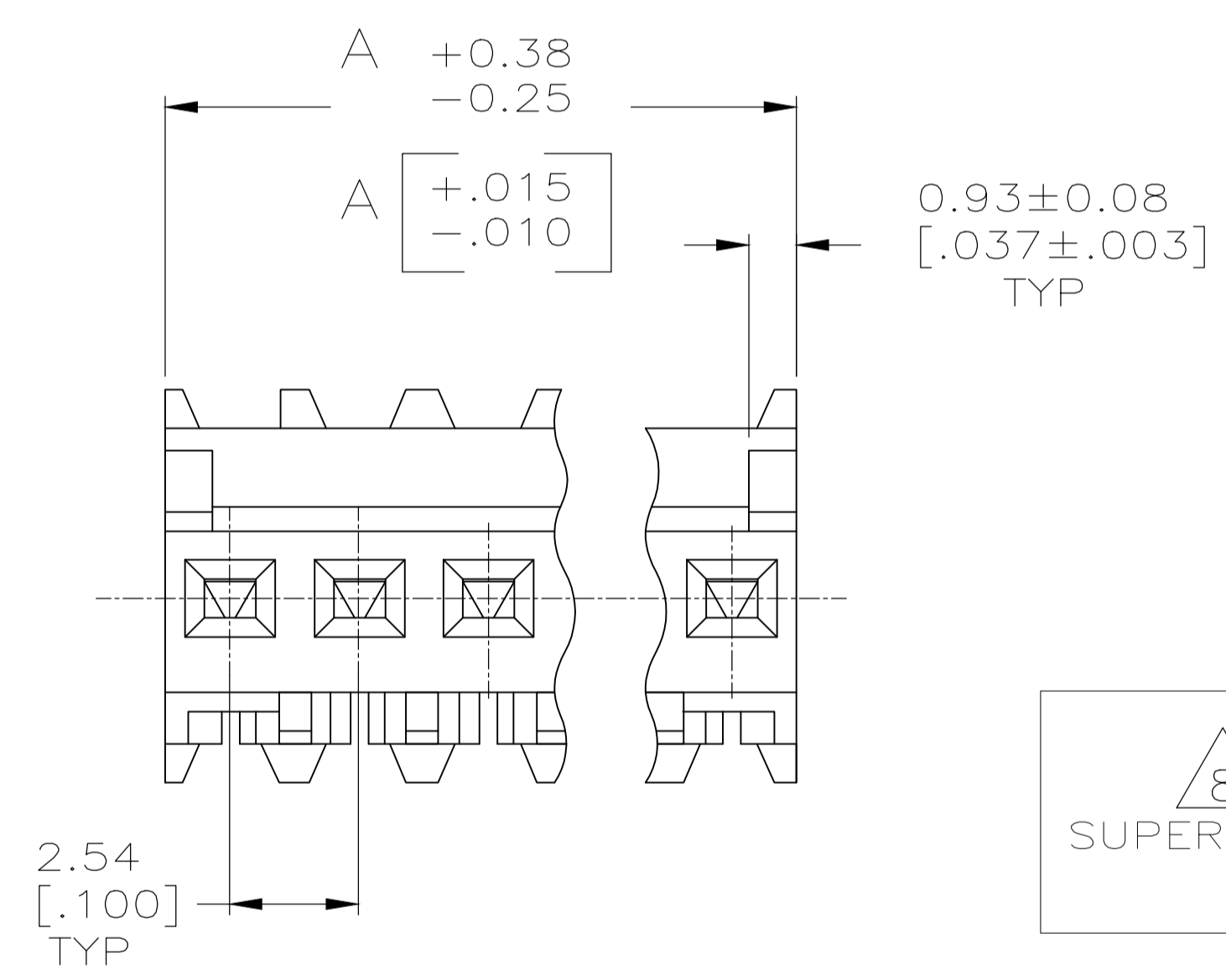
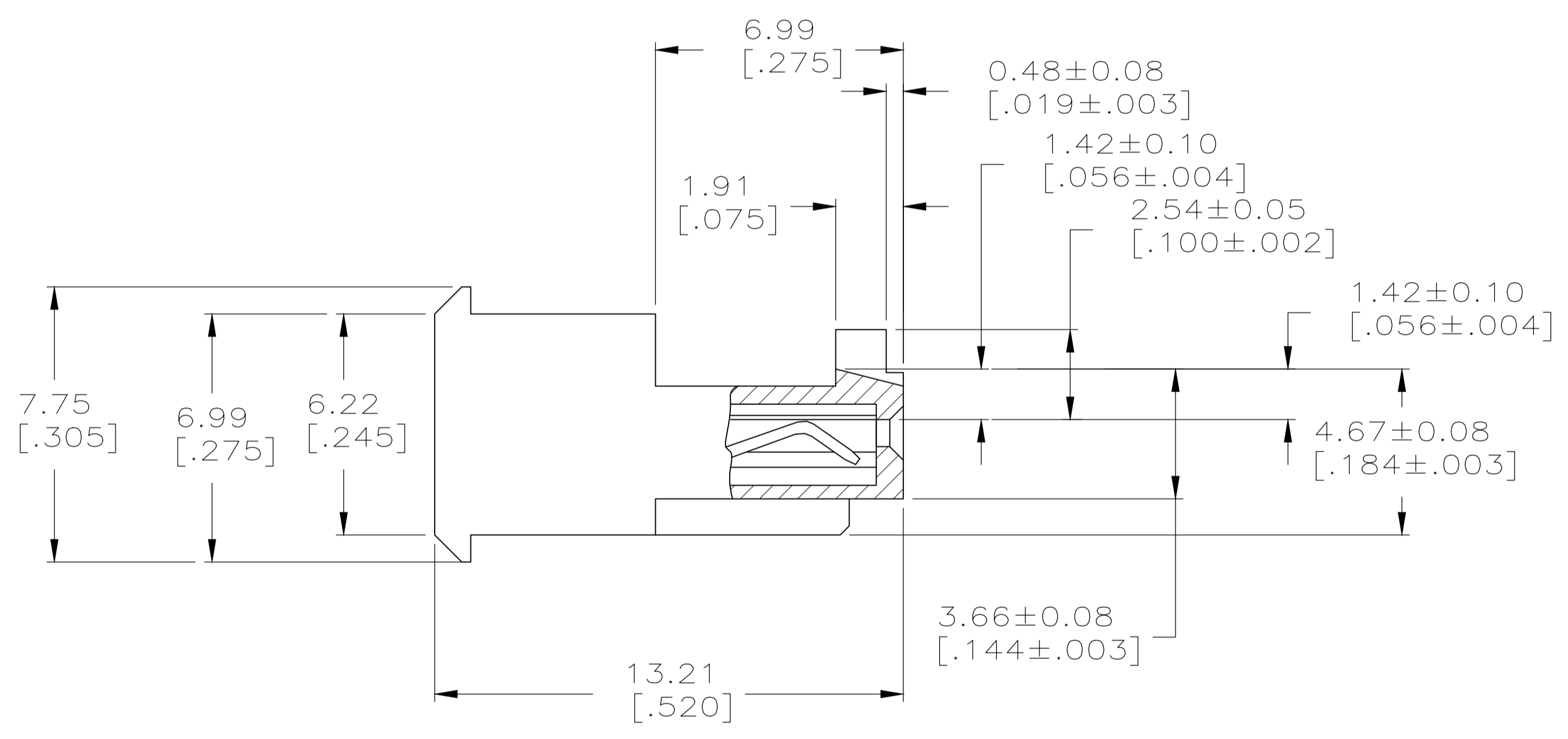
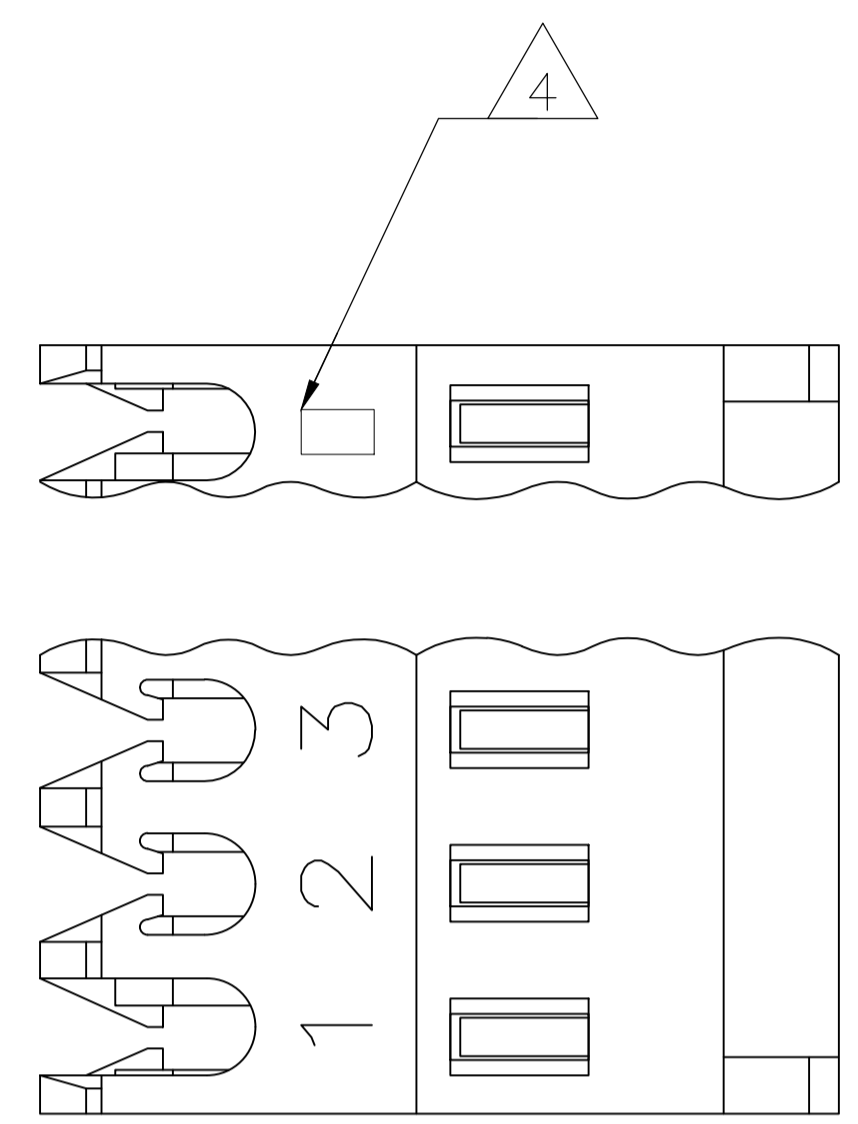


- 1 MATERIAL: CONNECTOR - NYLON UL94V-2 (RED).
 CONTACTS - 0.30[.012] THICK COPPER ALLOY
 0.00076[.000030] GOLD OR 0.00076[.000030]
 TOTAL GOLD FLASH OVER PALLADIUM NICKEL,
 PER TE CONNECTIVITY'S DISCRETION, IN CONTACT AREA
 WITH MATTE TIN SLOT AREA FOR 644702-2
 THRU1-644702-6
 OR MATTE WHISKER MITIGATED TIN FOR 3-644702-2
- 2 THRU 4-644702-6 OVER NICKEL UNDERPLATE.
- 3 CONTACTS ACCEPT 22 AWG WIRE WITH 1.52 [.060] MAX
 INSULATION DIAMETER.
- 4 CONTACTS MUST ACCEPT 0.64±0.03 [.025±.001] SQUARE POST
 AND REMAIN LOCKED IN POSITION.
- 5 IDENTIFICATION NUMBER FOR LAST CIRCUIT MAY NOT APPEAR ON ALL
 ASSEMBLIES.
- 6 DIMENSIONS IN BRACKETS ARE IN INCHES.
- 7 HOUSING FEATURES ARE: FEED THRU WITH LOCKING RAMP AND
 POLARIZING TAB.
- 8 OBSOLETE PARTS: OBSOLETE CIS STREAMLINING PER
 D.RENAUD/D.SINISI



FINISH	DIM A	NO. OF POSN	ASSEMBLY
TIN	40.64 [1.600]	16	4-644702-6
TIN	38.10 [1.500]	15	4-644702-5
TIN	35.56 [1.400]	14	4-644702-4
TIN	33.02 [1.300]	13	4-644702-3
TIN	30.48 [1.200]	12	4-644702-2
TIN	27.94 [1.100]	11	4-644702-1
TIN	25.40 [1.000]	10	4-644702-0
TIN	22.86 [.900]	9	3-644702-9
TIN	20.32 [.800]	8	3-644702-8
TIN	17.78 [.700]	7	3-644702-7
TIN	15.24 [.600]	6	3-644702-6
TIN	12.70 [.500]	5	3-644702-5
TIN	10.16 [.400]	4	3-644702-4
TIN	7.62 [.300]	3	3-644702-3
TIN	5.08 [.200]	2	3-644702-2
TIN-LEAD	40.64 [1.600]	16	1-644702-6
TIN-LEAD	38.10 [1.500]	15	1-644702-5
TIN-LEAD	35.56 [1.400]	14	1-644702-4
TIN-LEAD	33.02 [1.300]	13	1-644702-3
TIN	30.48 [1.200]	12	1-644702-2
TIN-LEAD	27.94 [1.100]	11	1-644702-1
TIN	25.40 [1.000]	10	1-644702-0
TIN	22.86 [.900]	9	644702-9
TIN	20.32 [.800]	8	644702-8
TIN	17.78 [.700]	7	644702-7
TIN-LEAD	15.24 [.600]	6	644702-6
TIN-LEAD	12.70 [.500]	5	644702-5
TIN-LEAD	10.16 [.400]	4	644702-4
TIN-LEAD	7.62 [.300]	3	644702-3
TIN	5.08 [.200]	2	644702-2

8 SUPERSEDED

8 SUPERSEDED

8 SUPERSEDED

THIS DRAWING IS A CONTROLLED DOCUMENT. DIM S. HOOVER 28-DEC-2004
 DIM D. ROSSI 28-DEC-2004
 DIM D. ROSSI 28-DEC-2004

DIMENSIONS: mm [INCHES]	TOLERANCES UNLESS OTHERWISE SPECIFIED:	0. PLC ±	1. PLC ±	2. PLC ±	3. PLC ±	4. PLC ±	ANGLES ±

MATERIAL 1 FINISH 1

WEIGHT A1 00779 644702

CUSTOMER DRAWING SCALE 8:1 SHEET 1 OF 1 REV N

TE Connectivity
 MTA .100 CONNECTOR ASSEMBLY, 22 AWG, STANDARD

单击下面可查看定价，库存，交付和生命周期等信息

[>>TE Connectivity\(泰科\)](#)