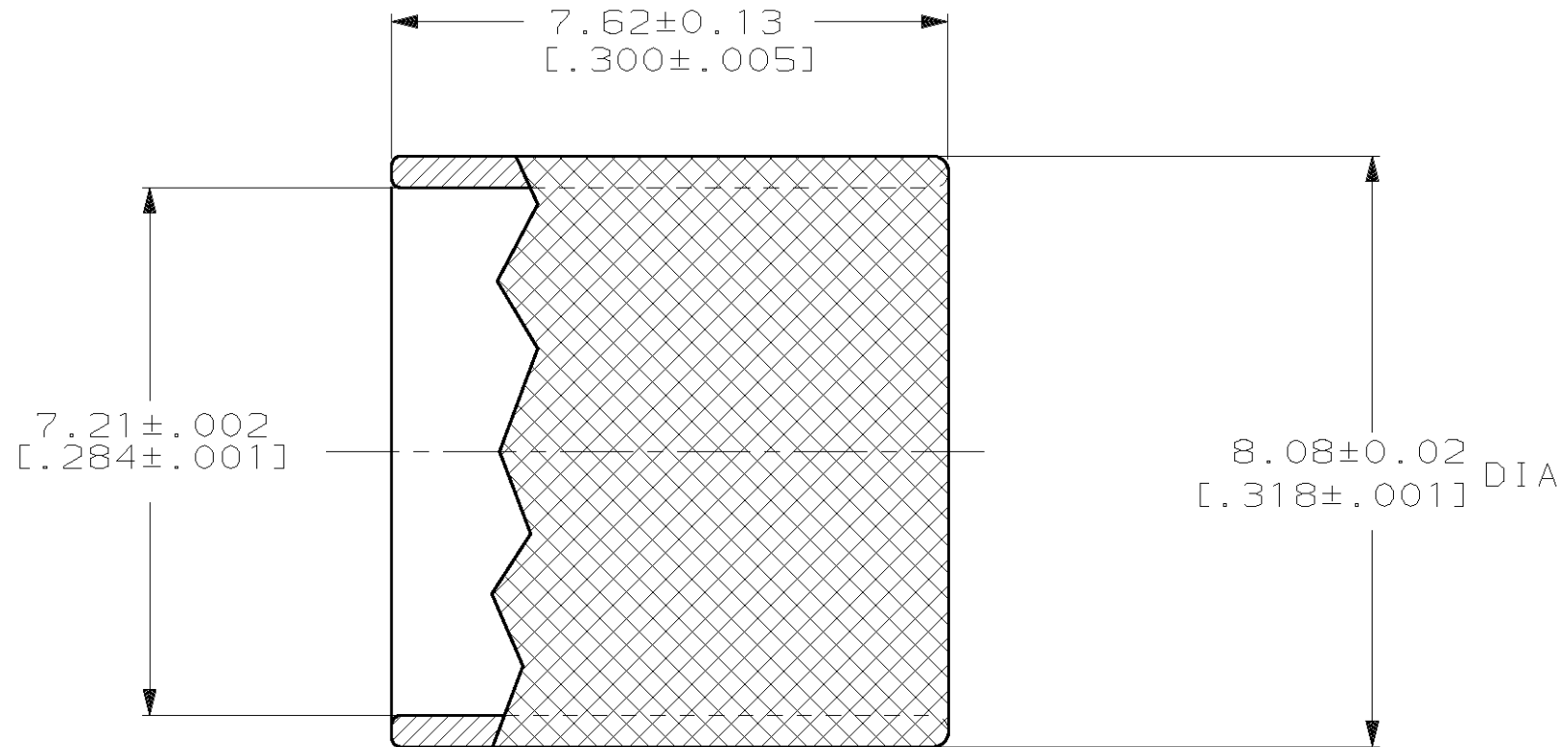
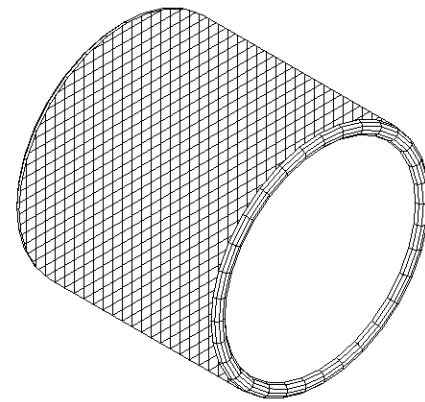


THIS DRAWING IS UNPUBLISHED. RELEASED FOR PUBLICATION, 19  
 © COPYRIGHT 19 BY AMP INCORPORATED. ALL INTERNATIONAL RIGHTS RESERVED.

LOC	DIST	P	F	REVISIONS			
ZONE	LTR	DESCRIPTION	DATE	APPD			
CE	16			C	REVISE PER 0A00-0717-98	04DEC98	JPM/MB
				C	REVISE PER 0A00-0588-03	26MAR04	KG/SB



1 BULK PACKAGED, 100 PCS.

1 OBSOLETE	501784-3
	501784-1
PART NUMBER	

DO NOT SCALE PRINT. UNLESS SPECIFIED DIMENSIONS IN mm TOLERANCES ON: 2 PLC DEC ± - 3 PLC DEC ± - ANGLES ± -		DR B. BRIGGS 8-10-89	AMP INCORPORATED Harrisburg, Pa. 17105
MATERIAL BRASS	CHK D. SONNER 8-10-89	APPD S. OWENS 8-10-89	
FINISH -	APPD S. OWENS 8-10-89	PRODUCT SPEC -	NAME CRIMP RING, INNER, FIXED SHROUD DUPLEX, OPTIMATE
	APPLICATION SPEC -	WEIGHT -	SIZE B FSCM NO 00779 DRAWING NO 501784
			SCALE 10:1 SHEET 1 OF 1

单击下面可查看定价，库存，交付和生命周期等信息

[>>TE Connectivity\(泰科\)](#)