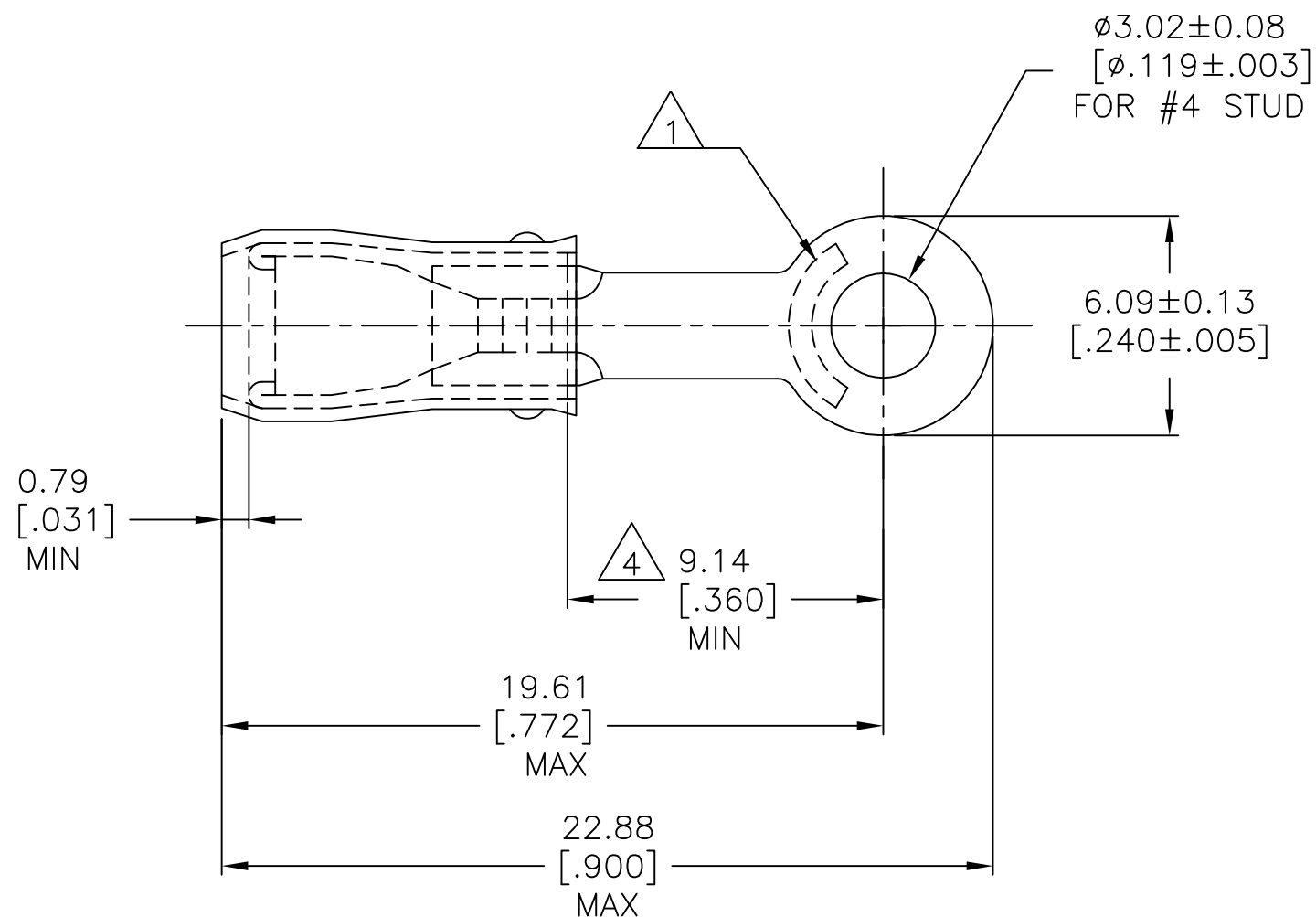


P	LTR	DESCRIPTION	DATE	DWN	APVD
	B1	REV PER ECR 07-014387	19JUN07	JR	TM
	C	REVISED PER ECO-17-001534	06MAY2017	RS	DR



- 1 STAMP AMP 18-16, APPROX AS SHOWN
- 2 WIRE INSULATION DIA IS $\phi 1.4-2.8\text{mm}$ [$\phi.055-.110$]
- 3 TONGUE MATERIAL THICKNESS IS 0.79 ± 0.05 [$.031 \pm .002$].
- 4 APPLIES FROM EDGE OF WIRE BARREL TO CENTER OF STUD HOLE.
- 5 MATERIAL: BODY - COPPER PER ASTM B-152
SLEEVE - NYLON
- 6 FINISH: BODY - TIN PLATE PER ASTM B-545
SLEEVE - COLOR, ORANGE

1000	LOOSE PIECE	154927
QTY	PACKAGE TYPE	PART NO.

AMP INCORPORATED CUSTOMER SERVICE SYSTEMS	
FOR ADDITIONAL PRODUCT INFORMATION OR COPIES OF DRAWINGS AND TECHNICAL DOCUMENTS	PRODUCT INFORMATION CENTER 1-800-522-6752
FOR APPLICATION TOOLING INFORMATION	TOOLING ASSISTANCE CENTER 1-800-722-1111
FOR ORDER ENTRY	1-800-526-5142

MAX RECOMMENDED OPERATING TEMPERATURE: 105°C [221°F]
VOLTAGE RATING: 300 V MAX
CIRCULAR MIL AREA: 0.81-1.65mm ² [1600-3260] SOLID OR STRANDED

THIS DRAWING IS A CONTROLLED DOCUMENT.	
DIMENSIONS: mm [INCHES]	TOLERANCES UNLESS OTHERWISE SPECIFIED:
	0 PLC ± -
	1 PLC ± -
	2 PLC ± 0.20 [.008]
	3 PLC ± -
	4 PLC ± -
	ANGLES ± -
MATERIAL	FINISH
5	6

DWN	JR RUTH	19JUN2007
CHK	T MICHELUTTI	19JUN07
APVD	T MICHELUTTI	19JUN07
PRODUCT SPEC	-	
APPLICATION SPEC	-	
WEIGHT	-	

TE Connectivity			
NAME			
TERMINAL, RING TONGUE, PIDG, WIRE SIZE: 18-16 AWG			
SIZE	CAGE CODE	DRAWING NO	RESTRICTED TO
A3	00779	C-154927	-
CUSTOMER DRAWING		SCALE	SHEET
		5:1	1 OF 1
		REV	C

单击下面可查看定价，库存，交付和生命周期等信息

[>>TE Connectivity\(泰科\)](#)