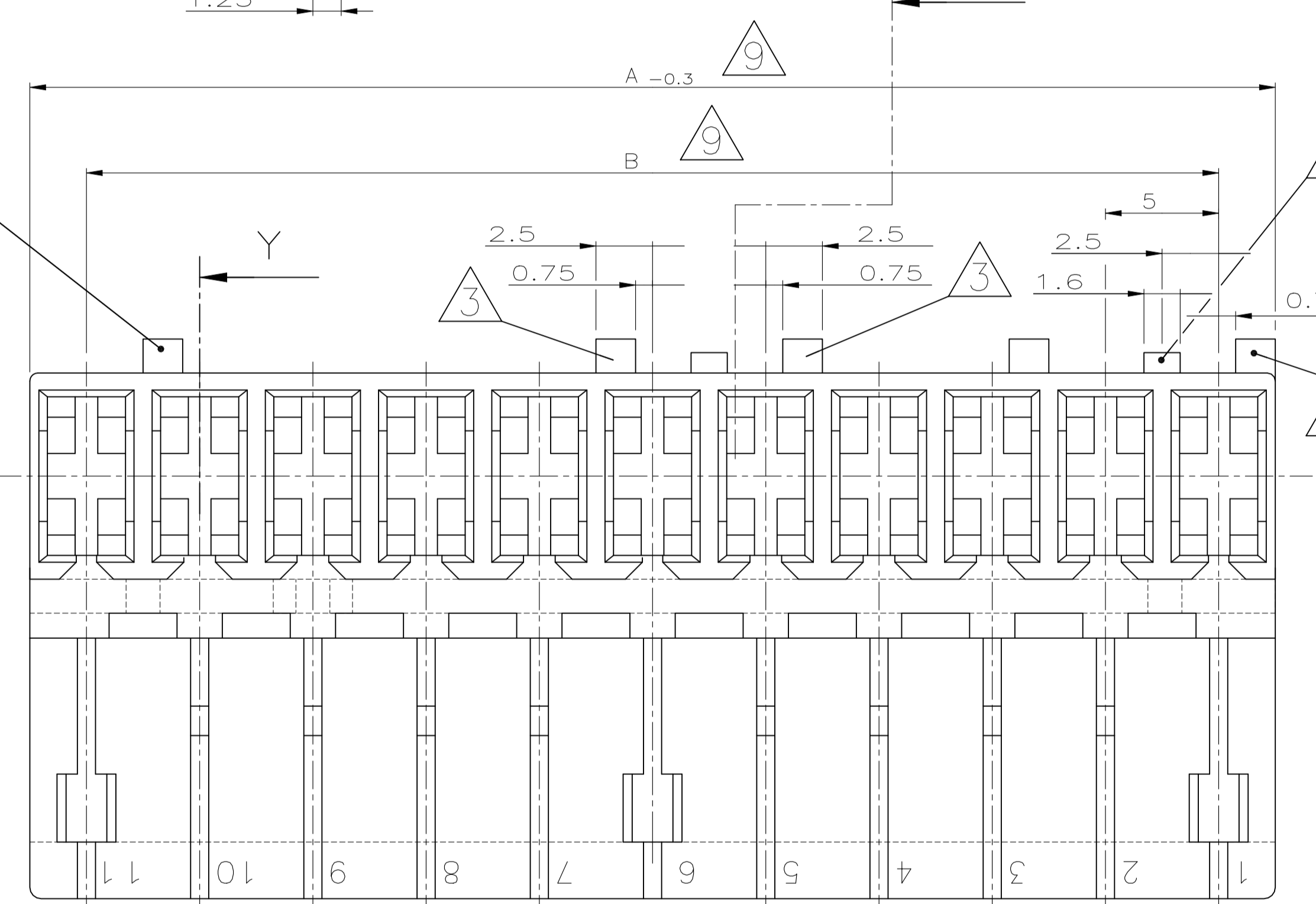
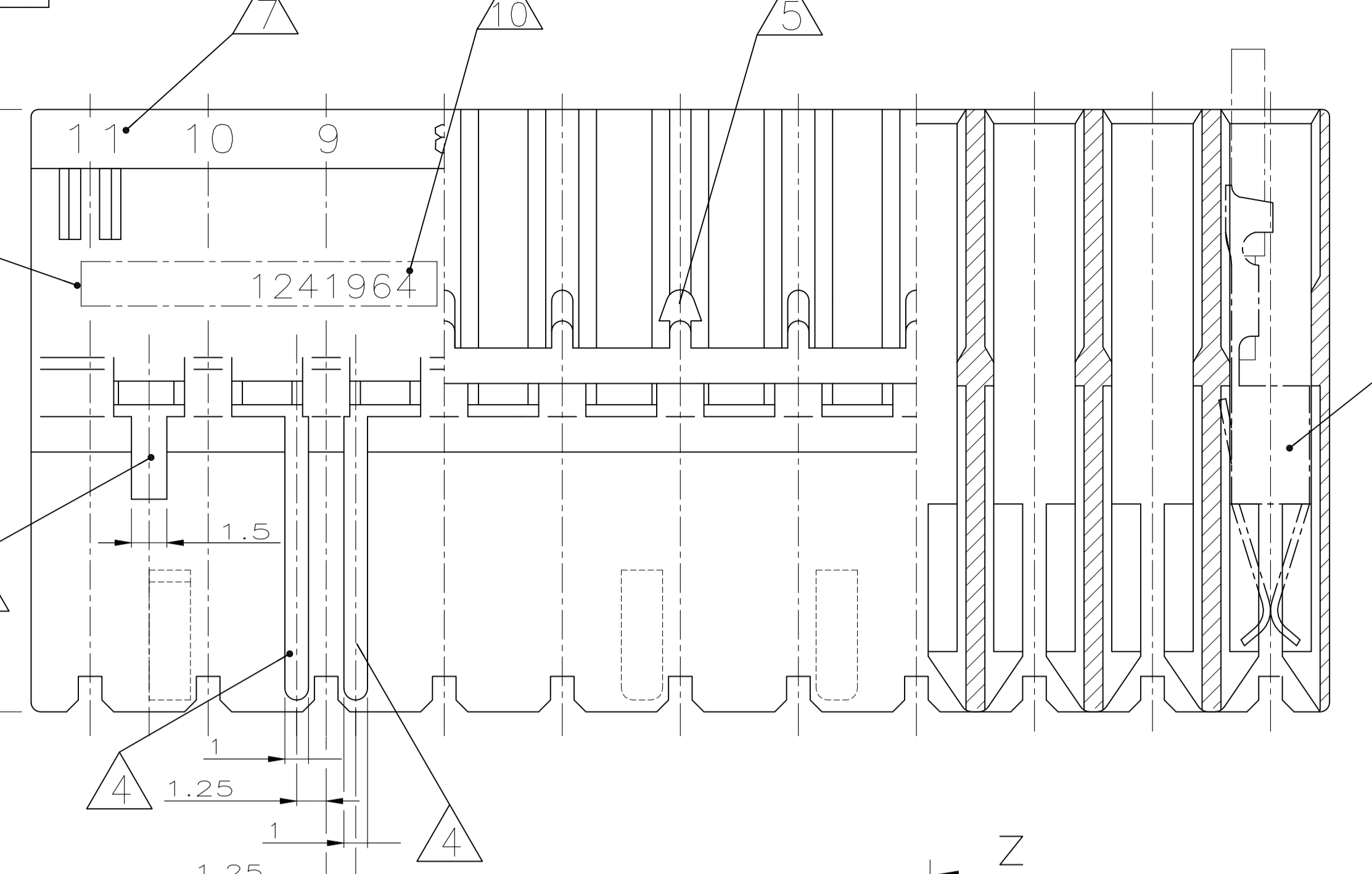
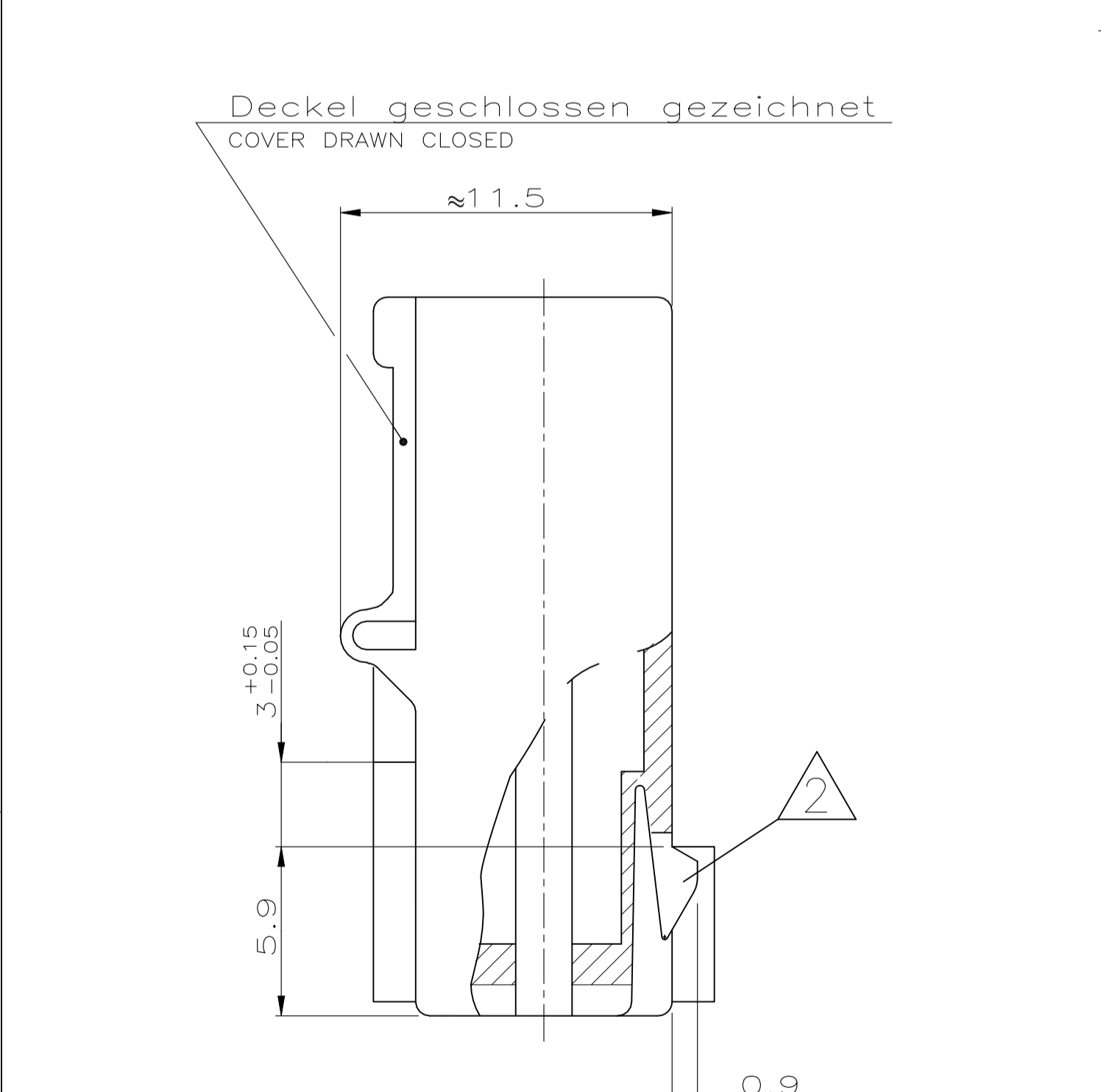
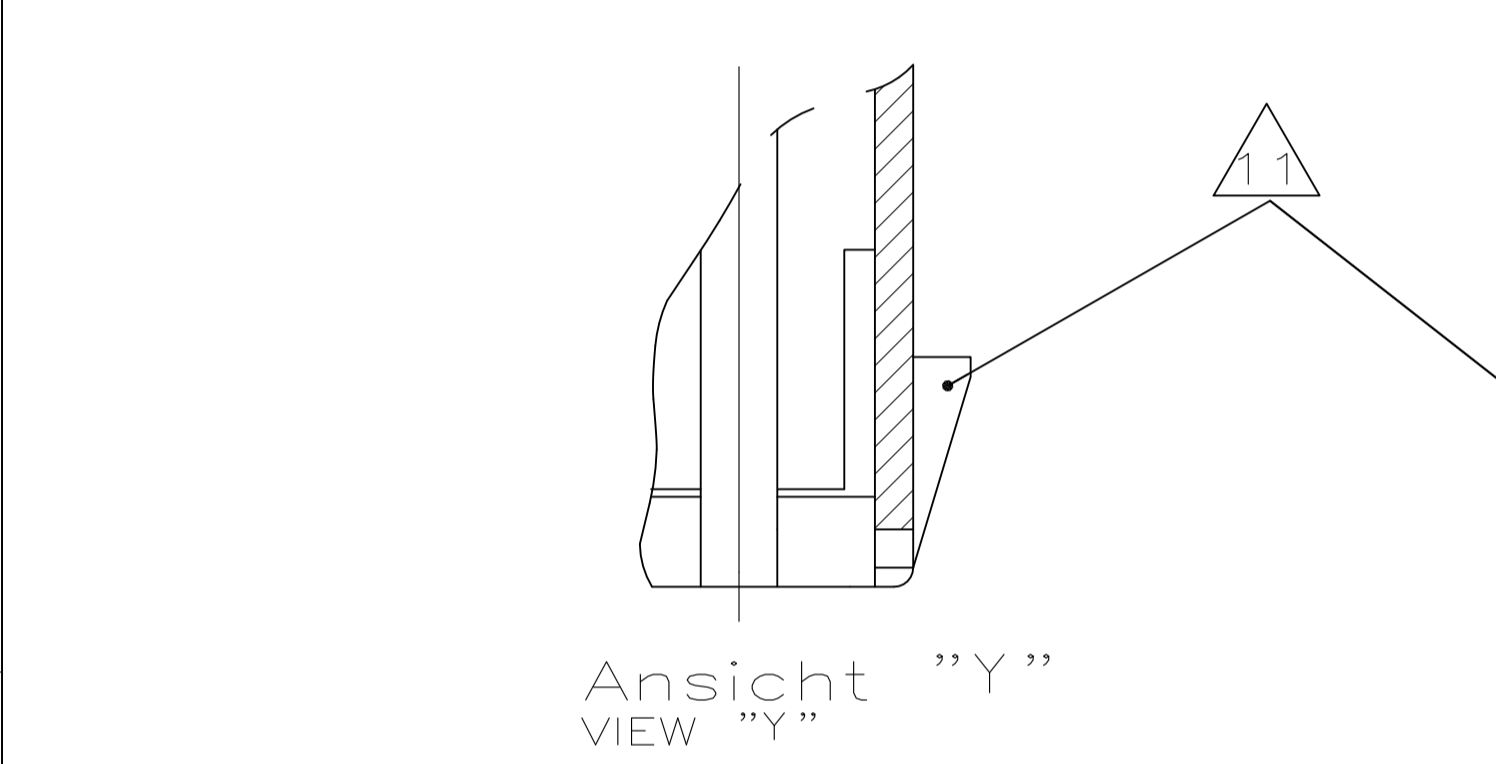
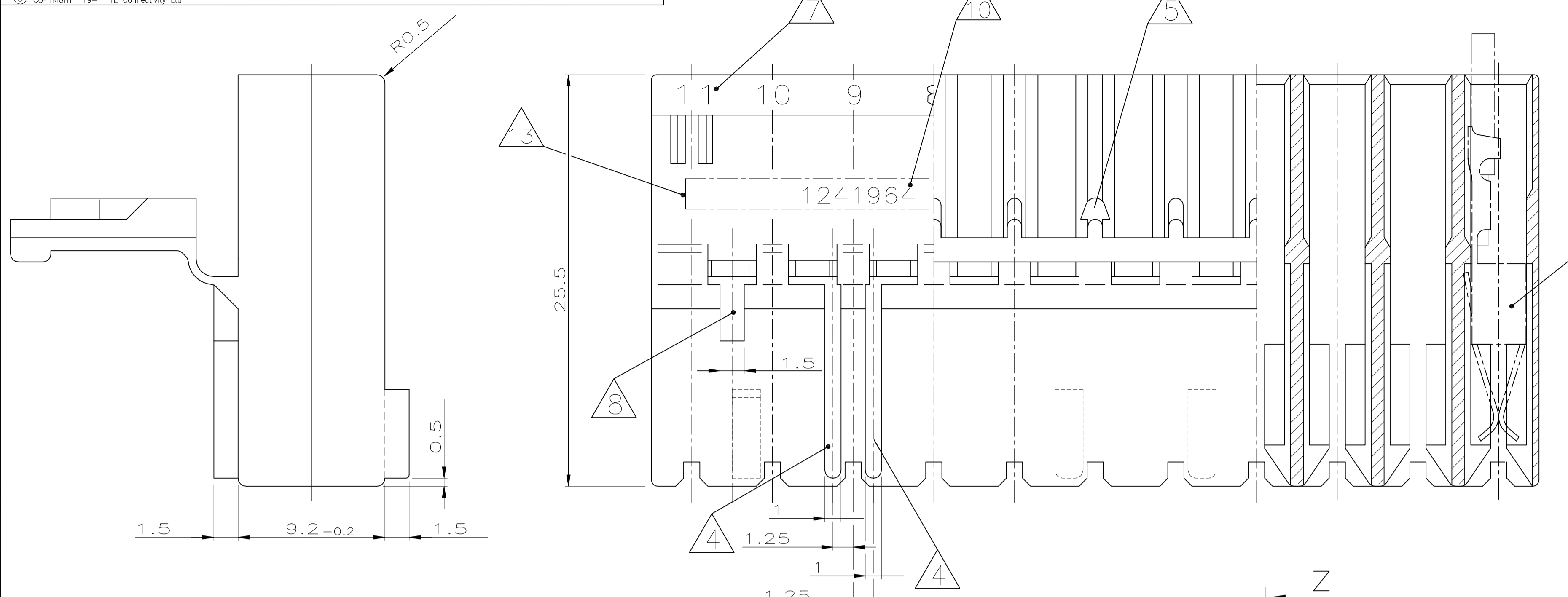


REVISIONS				
REV	DATE	DESCRIPTION	BY	APP'D
A15	20JAN2022	ECR-22-126094	PJ	FL



Bemerkungen  
NOTES

- 1 Kammer geeignet für AMP Timer-Kontakte: PN 926965  
CAVITY SUITABLE TO AMP TIMER-CONTACTS: PN 926973  
PN 926005  
PN 926006  
PN 927833  
PN 927837
- 2 Rasthaken zwischen Kammer Nr. ... (siehe Blatt 2 von 2)  
LOCKING LATCH BETWEEN CAVITY NO. ... (SEE SHEET 2 OF 2)
- 3 Kodierrippen nach unten (Lage "c") oder oben (Lage "d")  
versetzt, bei Kammer Nr. ... (siehe Blatt 2 von 2)  
KEYING RIB POSITION "c" OR POSITION "d",  
AT CAVITY NO. ... (SEE SHEET 2 OF 2)
- 4 Polarisierungsrippen durchgehend bis Scharnier, nach unten (Lage "a")  
oder oben (Lage "b") versetzt, bei Kammer Nr. ... (siehe Blatt 2 von 2)  
POLARIZATION RIB GO THROUGH TO HINGE, POSITION "a" OR  
"b", AT CAVITY NO. ... (SEE SHEET 2 OF 2)
- 5 Verrastung für Deckel bei Kammer Nr. ... (siehe Blatt 2 von 2)  
LOCKING DEVICE FOR COVER AT CAVITY NO. ... (SEE SHEET 2 OF 2)
- 6 Kodierrippen bei erster Kammer, Lage "c", und letzter Kammer, Lage "d",  
bündig mit Gehäuseaußenkante  
KEYING RIBS AT THE FIRST CAVITY, POSITION "c", AND THE LAST CAVITY, POSITION "d",  
FLUSH TO THE EDGE OF THE CONNECTOR
- 7 Kammernummer  
CAVITY NUMBER
- 8 Tiefenanschlag zwischen Kammer Nr. 1 und 2, ebenfalls  
zwischen der letzten und vorletzten Kammer  
MATING STOP BETWEEN CAVITY NO. 1 AND 2, ALSO  
BETWEEN THE LAST AND THE LAST BUT ONE CAVITY
- 9 Maß A und Maß B siehe Blatt 2 von 2  
DIMENSION A AND DIMENSION B SEE SHEET 2 OF 2
- 10 TE PART NUMBER (OPTIONAL)
- 11 Angeschrägte Kodierrippen nach unten (Lage "c") oder oben (Lage "d")  
versetzt, bei Kammer Nr. ... (siehe Blatt 2 von 2)  
SWAGED KEYING RIB POSITION "c" OR POSITION "b",  
AT CAVITY NO. ... (SEE SHEET 2 OF 2)
- 12 Material entspricht den Anforderungen der EN 60335 (incl. glow wire test 750°C,  
ohne Flamme  
MATERIAL CORRESPONDS TO REQUIREMENT EN 60335 ( INCL.GLOW WIRE TEST 750°C,  
NO FLAME)
- 13 AREA FOR TYCO ELECTRONICS LOGO ACC. TO SPEC. 202-36  
Bereich für TYCO ELECTRONICS Logo nach Spec. 202-36
- 14 Passender TE Gegenstecker: (siehe Stückliste)  
MATED WITH TE CONNECTOR: (SEE PARTS LIST)
- 15 Generell passende Flachsteckerwanne siehe RAST5 Vorgabe  
GENERAL SUITABLE TAB HEADER HOUSING SEE RAST5 PERFORMANCE
- 16 Leiterplattenanschluß siehe Zeichnung 88-9935-2  
CONNECTION TO THE PC BOARD SEE DRAWING 88-9935-2
- 17 PRELIMINARY PART NOT RELEASED FOR PRODUCTION
- 18 MATERIAL ACC. TO UL94-V0 AND GWPT 750°C NO FLAME

9 DOUBLE SOURCE RESIN: ALTERNATIVE RESIN UNDER APPROVAL

Tabelle mit Ausführungsvarianten  
und Bestellnummern auf Blatt 2 von 2  
LIST WITH DIFFERENT STYLINGS AND  
PARTNUMBERS SEE SHEET 2 OF 2

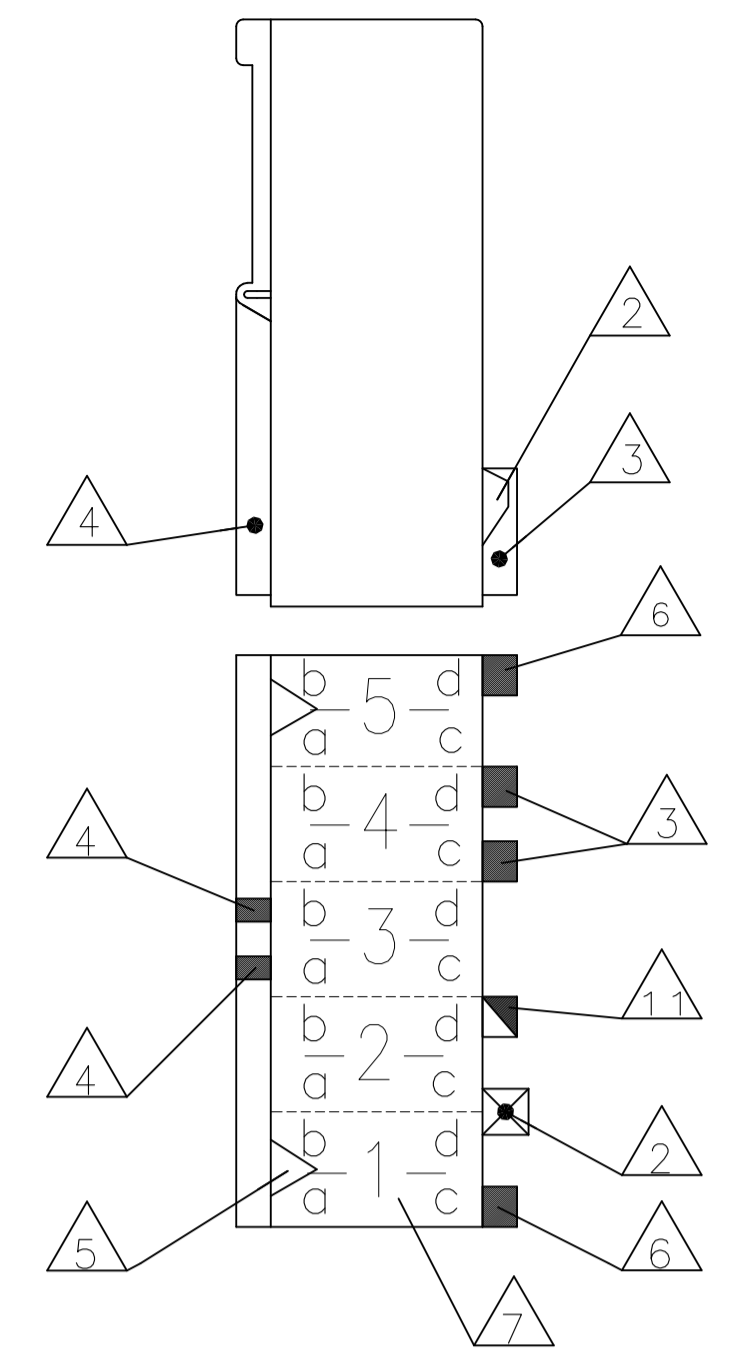
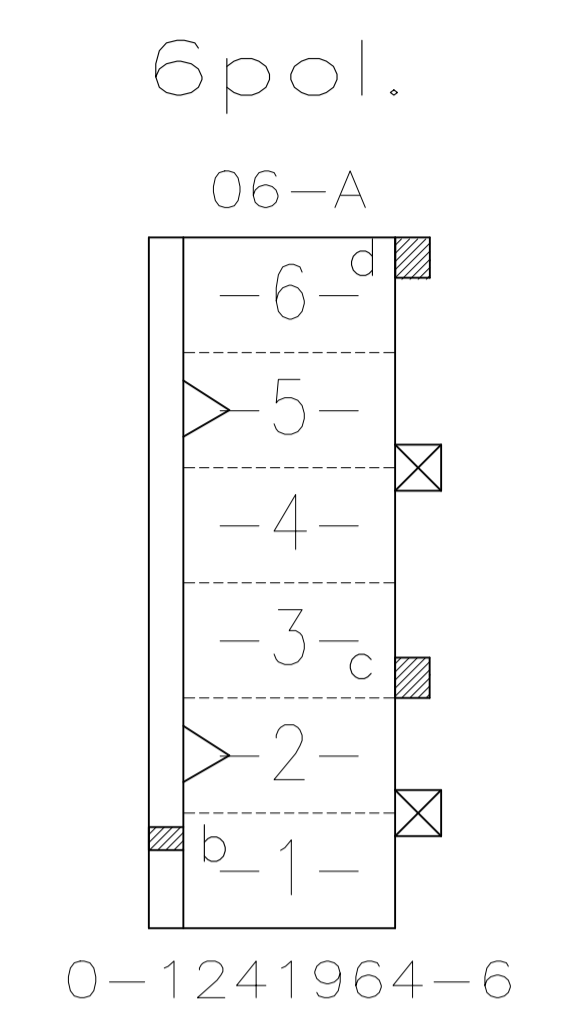
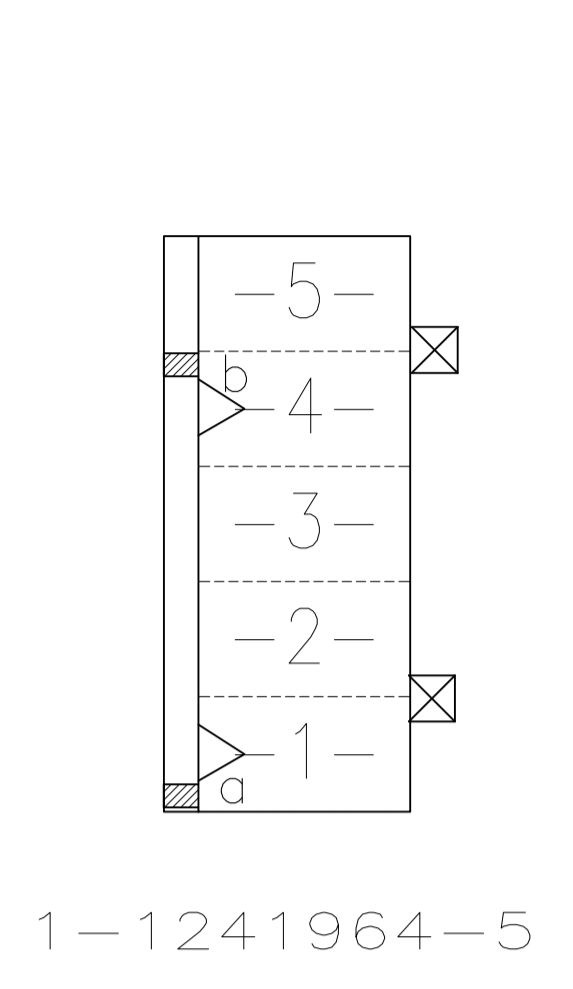
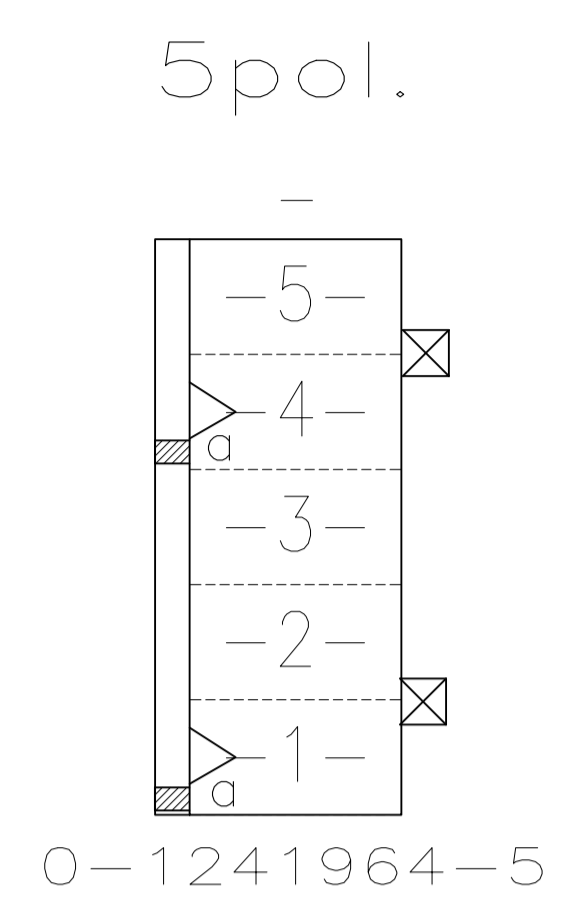
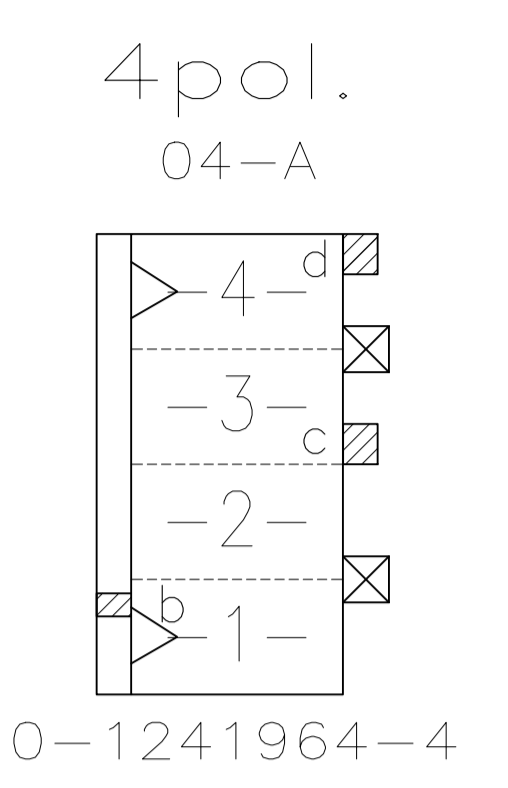
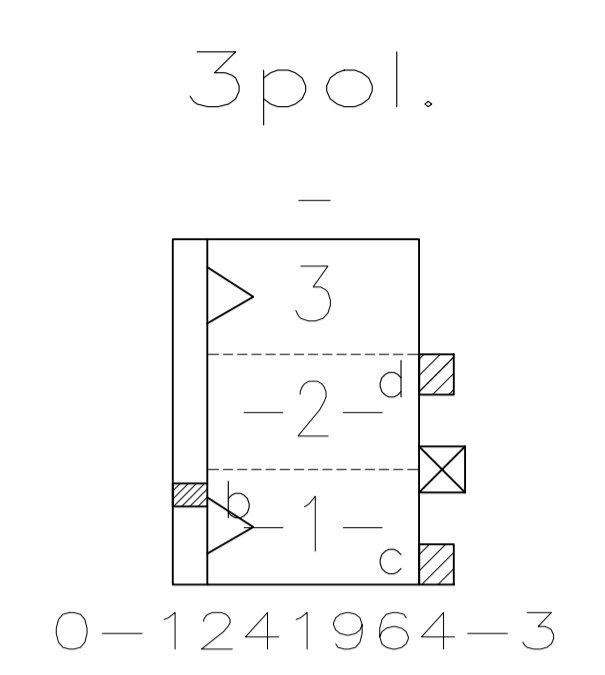
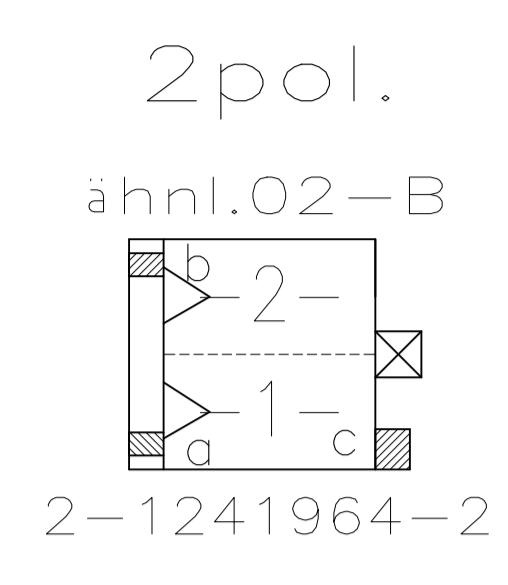
CUSTOMER PART NO	AMP PART NO	REV.	PCS.	MATERIAL	SURFACE COLOR	DESCRIPTION	ITEM NO
-	-	-	-	-	-	-	-
-	-	-	-	-	-	-	-
-	-	-	-	-	-	-	-

THIS DRAWING IS A CONTROLLED DOCUMENT.

DIMENSIONS: mm	TOLERANCES UNLESS OTHERWISE SPECIFIED: 2 DECIMALS 0.130 ± 0.005 1.270 ± 0.010 2.540 ± 0.020 3.175 ± 0.025 4.775 ± 0.030 ANGLES: ± 1°	DIN Mahnke, B 26-NOV-02 Stredak, F 29-NOV-02 Bleicher, B 30-NOV-02	NAME 2-11 POS. STANDARD-TIMER HOUSING WITH INTERIOR LOCKING, PITCH 5mm 2-11 pos. Standard-Timer Gehäuse mit Innenverrastung, RAST5
SEE SHEET 2/2 / siehe Blatt 2/2		SIZE A1	DRAWING NO. 1241964
MATERIAL SEE SHEET 2/2 Siehe Blatt 2/2		FINISH -	RESTRICTED TO -

CUSTOMER DRAWING SCALE 5:1 SHEET 1 OF 2 REV A15

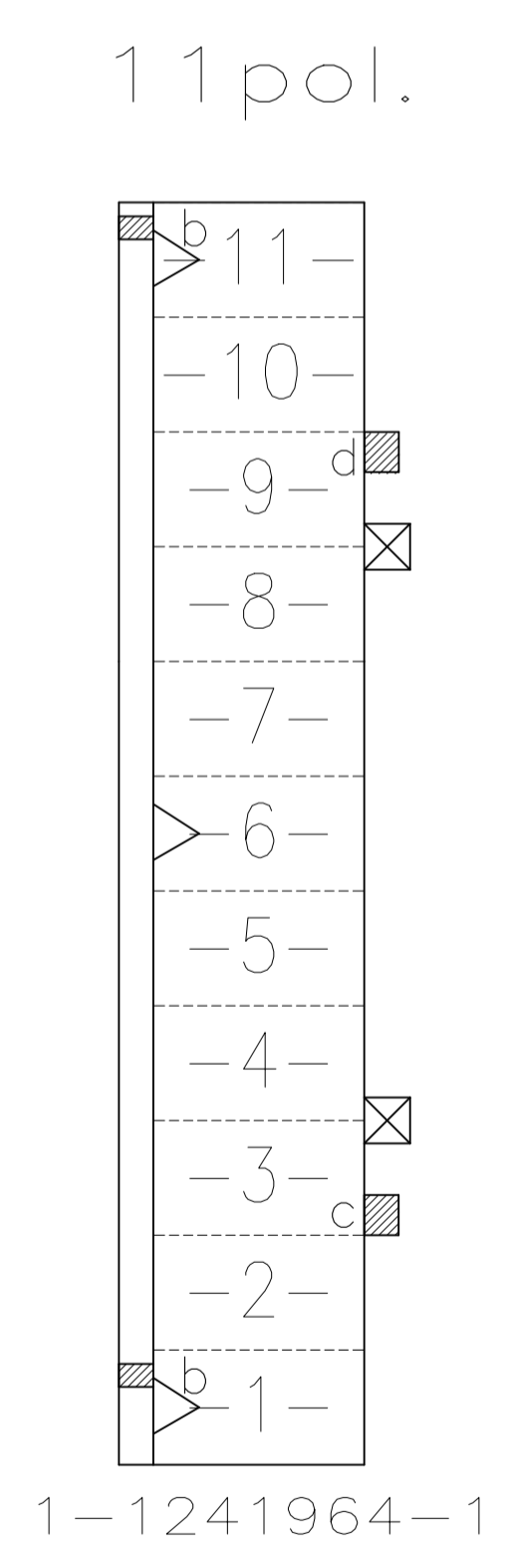
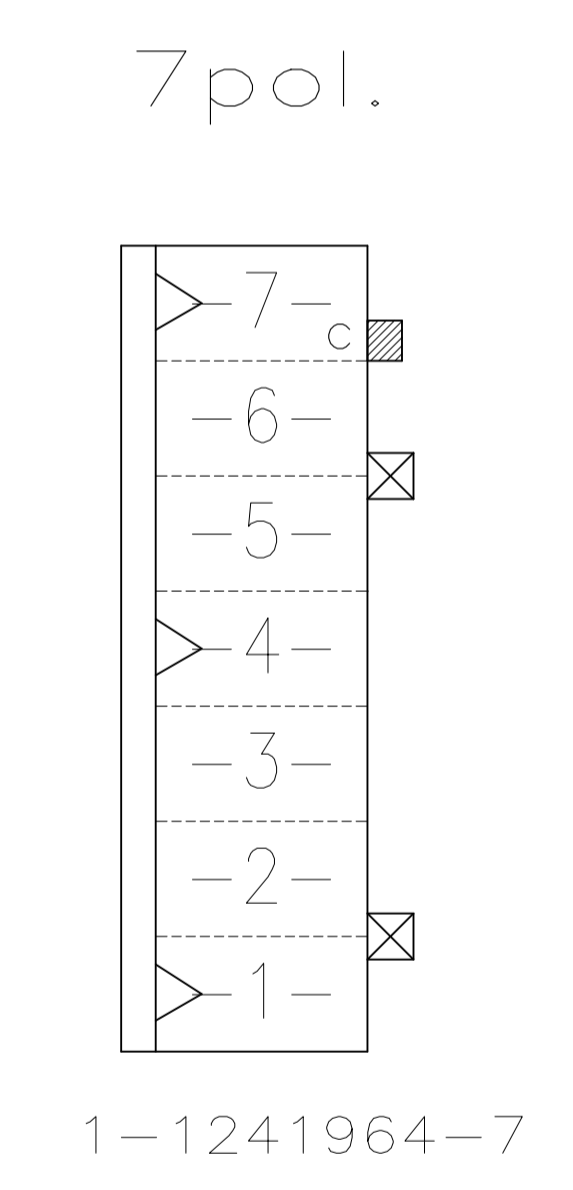
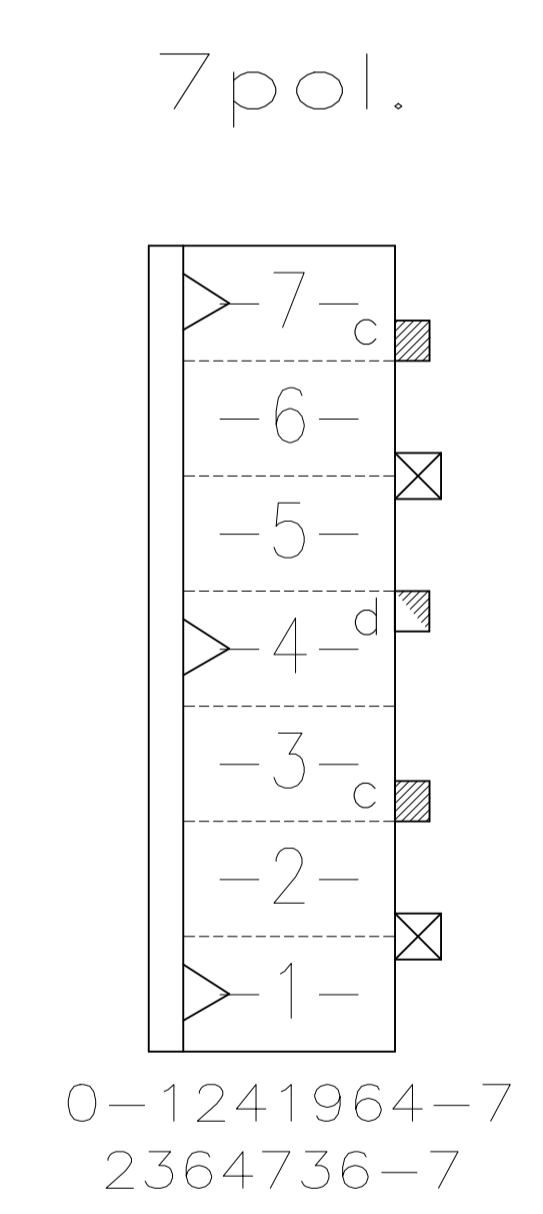
REVISIONS					
REV	DATE	DESCRIPTION	BY	CHK	APPV
-	-	SEE SHEET 1	-	-	-



**Darstellung:**  
 Lage der Kodier- und  
 Polarisierungsrippen und  
 Rastfedern am Gehäuse

**DESCRIPTION:**  
 POSITION OF KEYING RIB AND THE  
 LOCKING LATCH AT THE HOUSINGS

TE PART NUMBER (OPTIONAL)



Bestell-Nr.	Pol-Zahl	Maß A	Maß B	Farbe	Material	Gegenstecker	
PART NO.	POS.	DIM A	DIM B	COLOUR	MATERIAL	MATED WITH	
2364736-7	7	35	30	BLUE	PA66 <sup>13</sup> / <sub>13</sub> UL94-V0 & GWEPT 750°C n.f.	<sup>13</sup> / <sub>13</sub>	
-	-	-	-	-	-	-	
1-1241964-1	11	55	50	NATURE/natur	PA66 UL94V-2	<sup>13</sup> / <sub>13</sub>	
1-1241964-7	7	35	30	NATURE/natur		<sup>13</sup> / <sub>13</sub>	
0-1241964-7	7	35	30	NATURE/natur		<sup>13</sup> / <sub>13</sub>	
-	-	-	-	-		-	-
0-1241964-6	6	30	25	NATURE/natur		<sup>13</sup> / <sub>13</sub>	
-	-	-	-	-		-	-
1-1241964-5	5	25	20	NATURE/natur		<sup>13</sup> / <sub>13</sub>	
0-1241964-5	5	25	20	NATURE/natur		<sup>13</sup> / <sub>13</sub>	
0-1241964-4	4	20	15	NATURE/natur		<sup>13</sup> / <sub>13</sub>	
-	-	-	-	-		-	-
-	-	-	-	-		-	-
-	-	-	-	-	-	-	
-	-	-	-	-	-	-	
-	-	-	-	-	-	-	
-	-	-	-	-	-	-	
0-1241964-3	3	15	10	NATURE/natur	<sup>13</sup> / <sub>13</sub>		
-	-	-	-	-	-	-	
2-1241964-2	2	10	5	NATURE/natur	<sup>13</sup> / <sub>13</sub>		
Bestell-Nr.	Pol-Zahl	Maß A	Maß B	Farbe	Material	Gegenstecker <sup>14</sup> / <sub>14</sub>	
PART NO.	POS.	DIM A	DIM B	COLOUR	MATERIAL	MATED WITH <sup>14</sup> / <sub>14</sub>	

Stückliste/PARTS LIST

THIS DRAWING IS A CONTROLLED DOCUMENT.		DIN Mahnke, B 26-NOV-02	TE Connectivity Ltd.
DIMENSIONS: mm		CHK Stredak, F 29-NOV-02	
TOLERANCES UNLESS OTHERWISE SPECIFIED:		NAME Fleischer, B 30-NOV-02	2-11 POS. STANDARD-TIMER HOUSING WITH INTERIOR LOCKING, PITCH 5mm
0. PLC ± - 1. PLC ± 0.2mm 2. PLC ± - 3. PLC ± - 4. PLC ± - ANGLES ± 1		PRODUCT SPEC 108-18049-1	
MATERIAL SEE SHEET 2/2	FINISH	WEIGHT 0	SIZE A1 00779 C=1241964
CUSTOMER DRAWING		SCALE 5:1	SHEET 2 OF 2

单击下面可查看定价，库存，交付和生命周期等信息

[>>TE Connectivity\(泰科\)](#)