

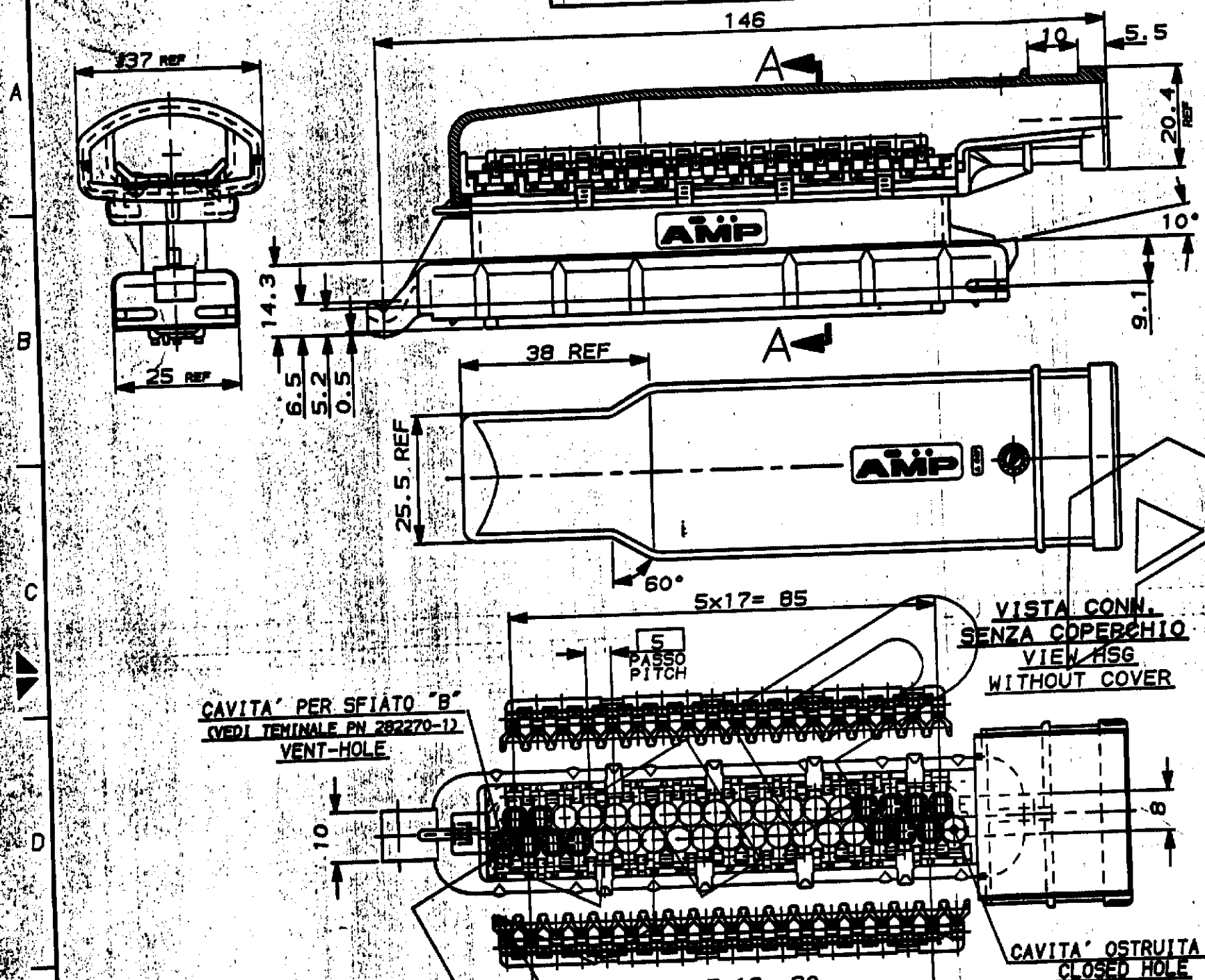
STANDARD VERSION

SCALA NON IMPERATIVA
(DO NOT SCALE)
DIMENSIONI IN mm
(DIMENSIONS IN mm)

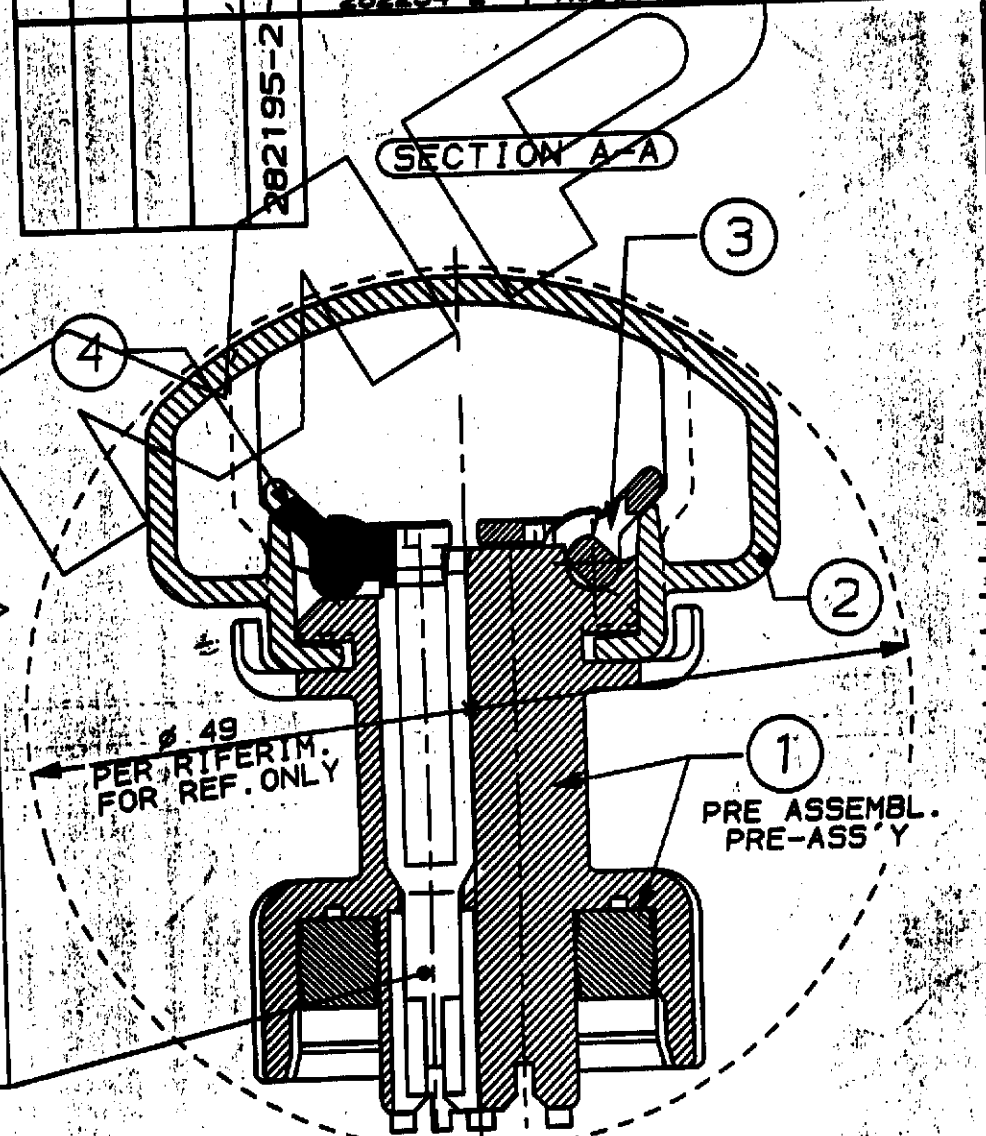
METRIC

PROIEZIONE EUROPEA
(EUROPEAN PROJECTION)

Q.TY REQ'D PER ASS'Y		PART. LIST		
		PART. NO.	DESCRIPTION	QTY
	1	282267-1	SEC. LOCK 19 POS.	4
	1	282266-1	SEC. LOCK 18 POS.	3
	1	282268-1	COVER	2
	1	282264-2	HOUSING ASS'Y	1



N°35 CAVITA' ADATTE PER TERMINALE
 "AMP JUNIOR POWER TIMER" E RELATIVI GOMMINI.
 N°35 CAVITIES SUITABLE
 FOR "AMP JUNIOR POWER TIMER" CTS.



CAVITA' PER SFIATO "B"
(VEDI TERMINALE PN 282270-12)
VENT-HOLE

VISTA CONN.
SENZA COPERCHIO
VIEW HSG
WITHOUT COVER

CAVITA' OSTRUITA "A"
CLOSED HOLE

BLACK	1	282195-2
COLOUR	MATERIALE (MATERIAL)	NUMERO (PART NUMBER)

CUSTOMER DWG. FOR REFERENCE ONLY
DISEGNO PER CLIENTE SOLO PER RIFERIMENTO

THIS DRAWING IS UNPUBLISHED
 © COPYRIGHT 1980 BY AMP INCORPORATED, PITTSBURGH, PA. ALL INTERNATIONAL RIGHTS RESERVED. AMP PRODUCTS MAY BE COVERED BY U.S. AND FOREIGN PATENT AND/OR PATENT PENDING.
 TOLLERANZE, SE NON DIVERSAMENTE SPECIFICATO
 TOLERANCES, UNLESS OTHERWISE SPECIFIED
 ± 0.3
 ANGOLI CANGIATI ± 2°
 DIS. E. CINI 11 MAY 1980
 DESCRIZIONE (DESCRIPTION)
 35 P. SPLASH PROOF CONN. WITH SECONDARY LOCK
 AMP ITALIA S.p.A. Corso P. LLI Garvi, 18 COLLENO (TORINO)

NOTES:

- 1 MATERIALI: HSG, COVER AND SEC. LOCKS IN PA 66 GLASS FILLED - SEALING OF SILICONE RUBBER
- 2) ITEMS 1, 2, 3, 4 PACKAGE INTO A CARTON BOX.

NOTE:

- 1 MATERIALI: -BLOCCHETTO, COPERCHIO E SEC. LOCK IN PA 66 CAR. VETRO - GUARNIZIONE IN SILICONE (Col. ROSSO)
- 2) I PART. 1, 2, 3, 4 SONO CONFEZIONATI IN KIT IN UNO DEI SEGUENTI CARTONE.

REV. A	RELEASED FOR PRODUCTION EC ET00-0175-83	CONT. COORD. TARTARI	LOC. SIZE NUMERO COMP. NO.	REV. 1	FOGLIO 1 DI 2
REV. B	REVISIONI	DIS. DATA	LOC. SIZE NUMERO COMP. NO.	REV. 1	FOGLIO 1 DI 2

ISTRUZIONE PER LA STAMPATURA

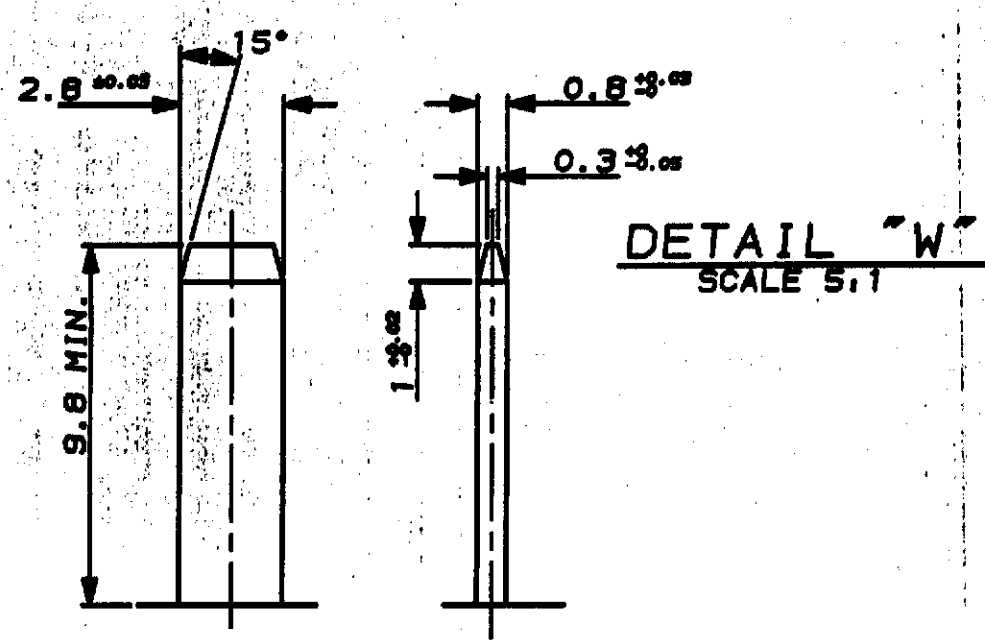
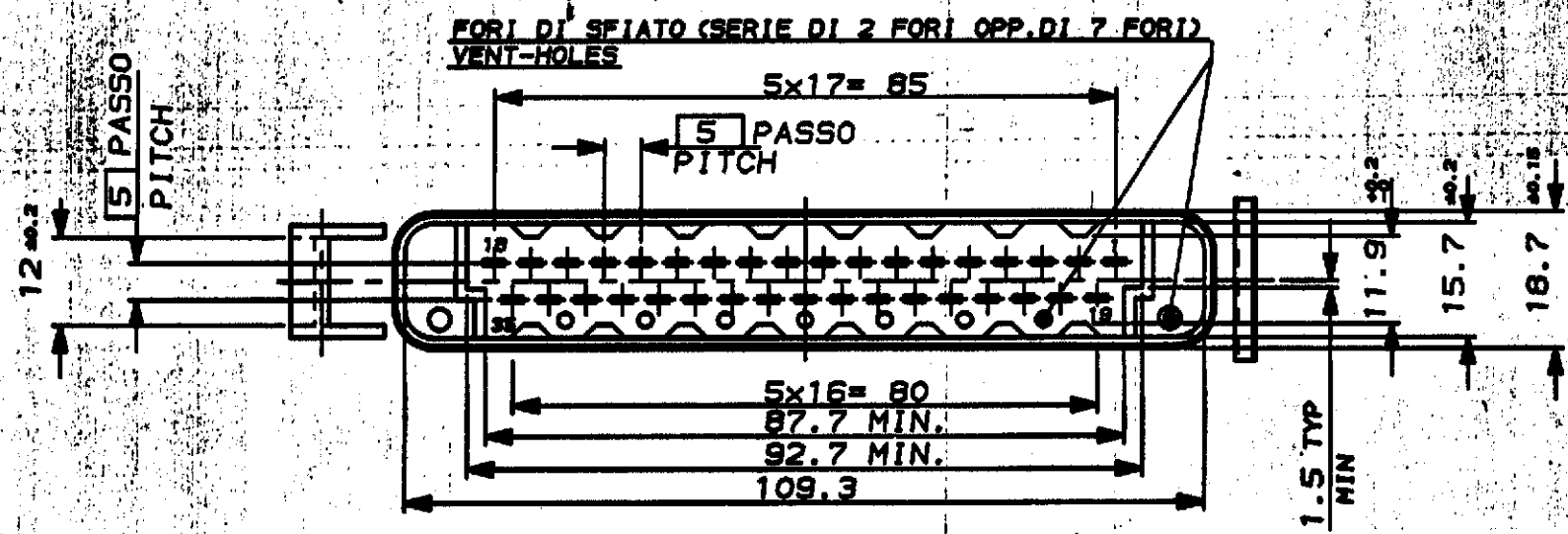
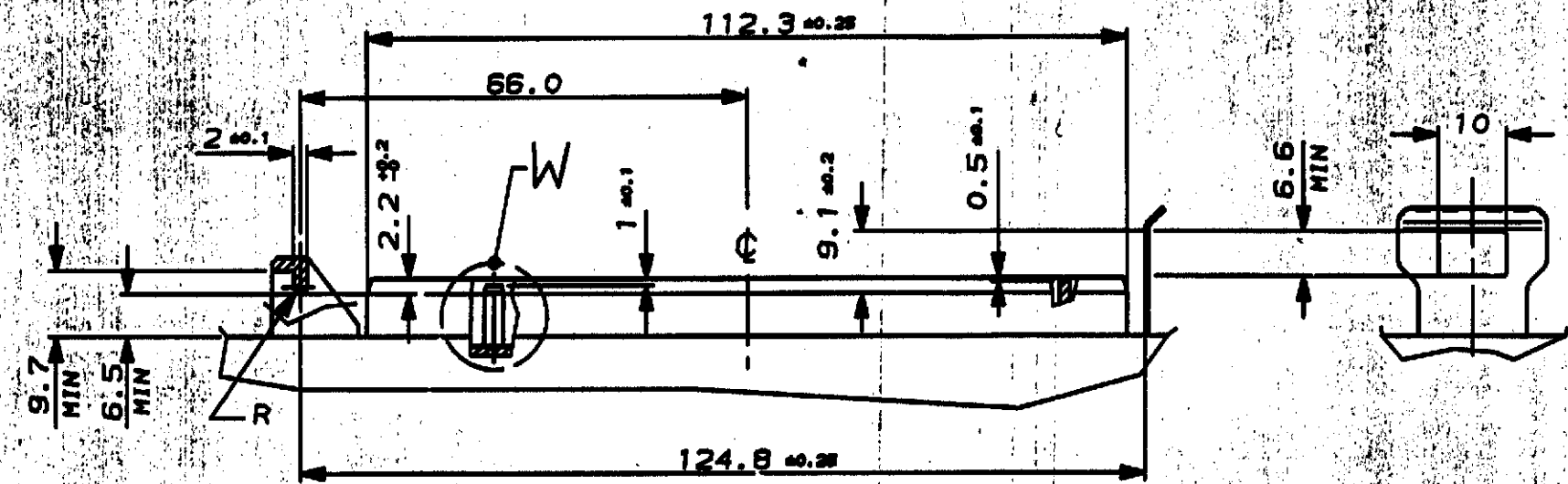
STANDARD VERSION

SCALA NON IMPERATIVA
(DO NOT SCALE)
DIMENSIONI IN mm
DIMENSIONS IN mm

METRIC

PROIEZIONE EUROPEA
EUROPEAN PROJECTION

INTERFACCIA D'ACCOPIAMENTO COUNTERPART



SEE SHEET 1 OF 2

(FINISH / COLOUR)	MATERIALE (MATERIAL)	NUMERO (PART NUMBER)
CUSTOMER DWG. FOR REFERENCE ONLY	DISEGNO PER CLIENTE SOLO PER RIFERIMENTO	
THIS DRAWING IS UNPUBLISHED		
© COPYRIGHT IS BY AMP INCORPORATED, HARTFORD, PA. ALL INTERNATIONAL RIGHTS RESERVED. AMP PRODUCTS MAY BE COVERED BY U.S. AND FOREIGN PATENT AND/OR PATENT PENDING TOLERANCE, SE NON DIVERSAMENTE SPECIFICATO		
± 0.3	DIAM. ISOLANTE (INS. DIA. RANGE)	RANGO FILO (WIRE RANGE)
ANGOLI (ANGLES) ± 2°		SCALA (SCALE)
AMP AMP ITALIA S.p.A. Corso P.lli Garibaldi COLLENO (TORINO)		
DIS. E.CINI 30 NOV. '82 CONT. - 28NOV.93 C. TARTARI		
DESCRIZIONE (DESCRIPTION) 35 P. SPLASH PROOF CONN. with SECONDARY LOCK		
APP. CAP. 2	LOC. SIZE NUMERO (CASE NO)	REV. FOLIO (SHEET) DI (OF)
	IA3C-282195	A 22

DISTRIBUTION (PRINT DIST.)

单击下面可查看定价，库存，交付和生命周期等信息

[>>TE Connectivity\(泰科\)](#)