

4

3

2

1

THIS DRAWING IS UNPUBLISHED.

RELEASED FOR PUBLICATION

© COPYRIGHT 2011 BY TYCO ELECTRONICS CORPORATION. ALL RIGHTS RESERVED.

LOC
DW

DIST

REVISIONS

| P | LTR | DESCRIPTION | DATE | DWN | APVD |
|----|-----|---------------|----------|-----|------|
| A5 | | ECR-17-013294 | 11SEP'17 | T.Q | W.H |

DIM A

FOR PIN1 MARK

4.30

3.50

Ø1.80

RECOMMENDED PICK-UP AREA

0.80±0.05
2 PLC

0.80MIN.
2 PLC

3.85±0.05

1.10±0.05
2 PLC

0.60MIN.

1.20±0.05

DIM B±0.05

0.85MIN.

CONNECTOR OUTLINE

0.80±0.05
2 PLC

0.70MIN.
2 PLC

3.85±0.05

0.80±0.05
2 PLC

0.60MIN.

1.20±0.05

DIM B±0.05

0.85MIN.

CONNECTOR OUTLINE

DIM C

DIM B±0.15

1.20±0.15

1.20

1.40

1.1

0.20±0.03

0.30

RECOMMENDED PCB LAYOUT
ONLY FOR 4~6 PINRECOMMENDED PCB LAYOUT
ONLY FOR 2 & 3 PIN

0.1 MAX.
SOLDER LEAD

NOTE:

1. MATERIAL:

1.1 HOUSING: LCP WITH 30% GF, UL 94V-0, BLACK COLOR.

1.2 CONTACTS: PHOSPHOR BRONZE 0.20±0.05mm THICKNESS.

1.3 PEGS: BRASS 0.30±0.05mm THICKNESS.

2. FINISH:

2.1 CONTACTS: GOLD FLASH PLATED ON CONTACT AREA, WITH ENTIRE CONTACT GOLD FLASH PLATED OVER 1.27µm [50u"] MIN. NICKEL UNDERPLATED OVERALL.

2.2 PEGS: 2.54µm [100u"] MIN. MATTE-TIN OVER 1.27µm [50u"] MIN. NICKEL UNDERPLATED OVERALL.

3. REFLOW SOLDER CAPABLE TO 260°C PER TYCO TEST SPEC.

109-201, CONDITION B.

4. NO TYCO LOGO AND DATE CODE ON THE PRODUCT.

5. RECOMMENDED TO MATE WITH TE 1909783-X

| | | | | | |
|--------|------|-----|-----|-----------------|-------------|
| 0.067g | 7.44 | 6.0 | 9.0 | 06 | 1909782-5 |
| 0.053g | 6.24 | 4.8 | 7.8 | 05 | 1909782-4 |
| 0.040g | 5.04 | 3.6 | 6.6 | 04 | 1909782-3 |
| 0.027g | 3.84 | 2.4 | 5.4 | 03 | 1909782-2 |
| 0.015g | 2.64 | 1.2 | 4.2 | 02 | 1909782-1 |
| WEIGHT | C | B | A | NO. OF CONTACTS | PART NUMBER |

| | | | | | | | | | | | | | | | | | |
|--|--------|--------------------------------|-------------------------|-----------------|--------------------|-------|--------|-------|--------|-------|-----|--------|------|---------------------------|---|--|--|
| THIS DRAWING IS A CONTROLLED DOCUMENT. | | DWN F. YANG 20MAY2009 | TE Connectivity | | | | | | | | | | | | | | |
| DIMENSIONS: mm | | CHK S. CHIEN 20MAY2009 | | | | | | | | | | | | | | | |
| TOLERANCES UNLESS OTHERWISE SPECIFIED: | | APVD W. KODAMA 20MAY2009 | NAME | | | | | | | | | | | | | | |
| <table border="1"> <tbody> <tr> <td>0 PLC</td> <td>± -</td> </tr> <tr> <td>1 PLC</td> <td>± 0.3</td> </tr> <tr> <td>2 PLC</td> <td>± 0.25</td> </tr> <tr> <td>3 PLC</td> <td>± 0.15</td> </tr> <tr> <td>4 PLC</td> <td>± -</td> </tr> <tr> <td>ANGLES</td> <td>± 3°</td> </tr> </tbody> </table> | | 0 PLC | ± - | 1 PLC | ± 0.3 | 2 PLC | ± 0.25 | 3 PLC | ± 0.15 | 4 PLC | ± - | ANGLES | ± 3° | PRODUCT SPEC 108-57767 | 1.2mm PITCH, BOARD TO WIRE CONNECTOR WAFER, TOP ENTRYX | | |
| 0 PLC | ± - | | | | | | | | | | | | | | | | |
| 1 PLC | ± 0.3 | | | | | | | | | | | | | | | | |
| 2 PLC | ± 0.25 | | | | | | | | | | | | | | | | |
| 3 PLC | ± 0.15 | | | | | | | | | | | | | | | | |
| 4 PLC | ± - | | | | | | | | | | | | | | | | |
| ANGLES | ± 3° | | | | | | | | | | | | | | | | |
| MATERIAL SEE NOTE | | FINISH SEE NOTE | APPLICATION SPEC | SIZE A3 | CAGE CODE 00779 | | | | | | | | | | | | |
| | | WEIGHT SEE TABLE | DRAWING NO C=1909782 | RESTRICTED TO | | | | | | | | | | | | | |
| | | CUSTOMER DRAWING | SCALE - | SHEET 1 of 3 | REV A5 | | | | | | | | | | | | |

1470-19 (1/08)

Downloaded From Onezac.com

4

3

2

1

THIS DRAWING IS UNPUBLISHED.

RELEASED FOR PUBLICATION

© COPYRIGHT 2011 BY TYCO ELECTRONICS CORPORATION. ALL RIGHTS RESERVED.

LOC

DIST

REVISIONS

DW

P

LTR

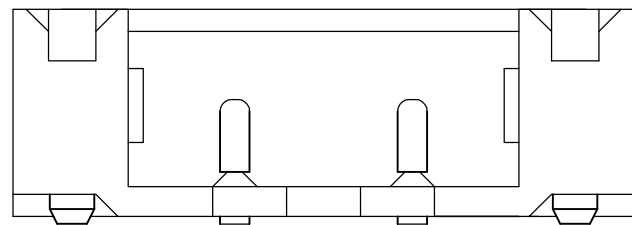
DESCRIPTION

DATE

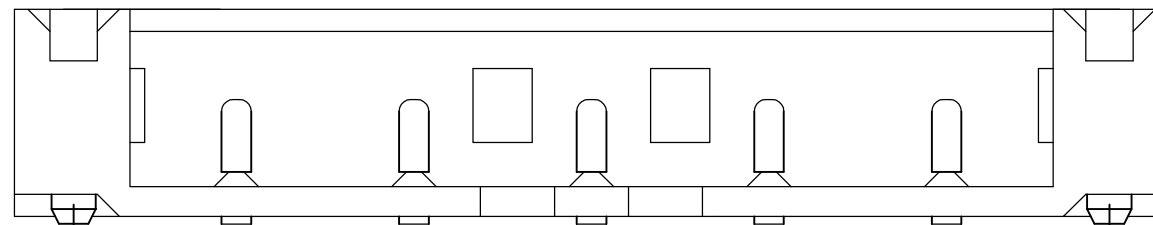
DWN

APVD

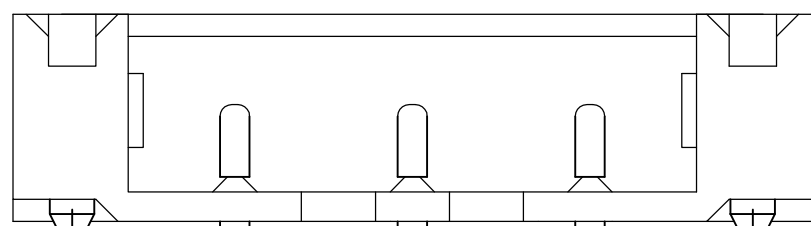
SEE SHEET 1.



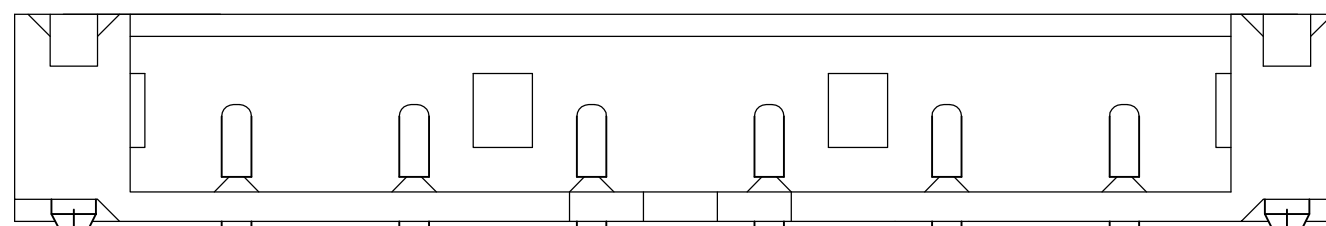
FOR 2 PIN



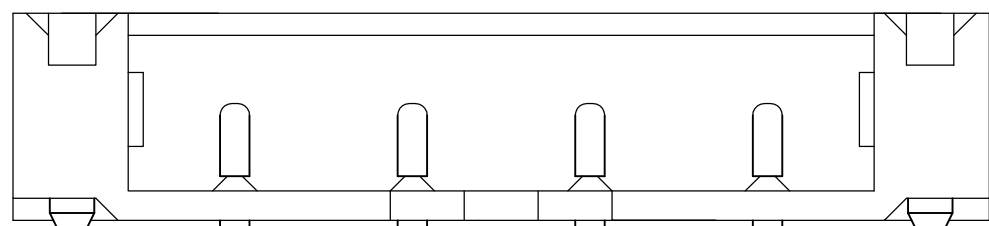
FOR 5 PIN



FOR 3 PIN



FOR 6 PIN

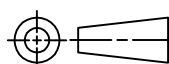


FOR 4 PIN

THIS DRAWING IS A CONTROLLED DOCUMENT.

DIMENSIONS:

mm



TOLERANCES UNLESS OTHERWISE SPECIFIED:

- 0 PLC ± -
- 1 PLC ± 0.3
- 2 PLC ± 0.2
- 3 PLC ± 0.15
- 4 PLC ± -
- ANGLES ± 3'

MATERIAL

FINISH

DWN

CHK

APVD

PRODUCT SPEC

APPLICATION SPEC

WEIGHT

CUSTOMER DRAWING



NAME

1.2mm PITCH, BOARD TO WIRE CONNECTOR WAFER, TOP ENTRYX

SIZE

CAGE CODE

DRAWING NO

RESTRICTED TO

A3

00779

C=1909782

SCALE

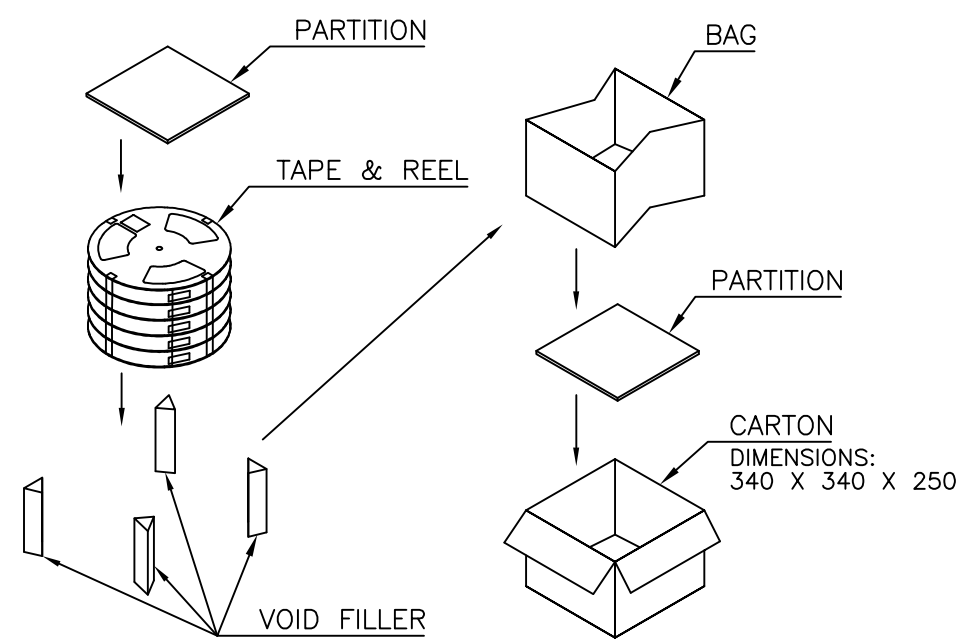
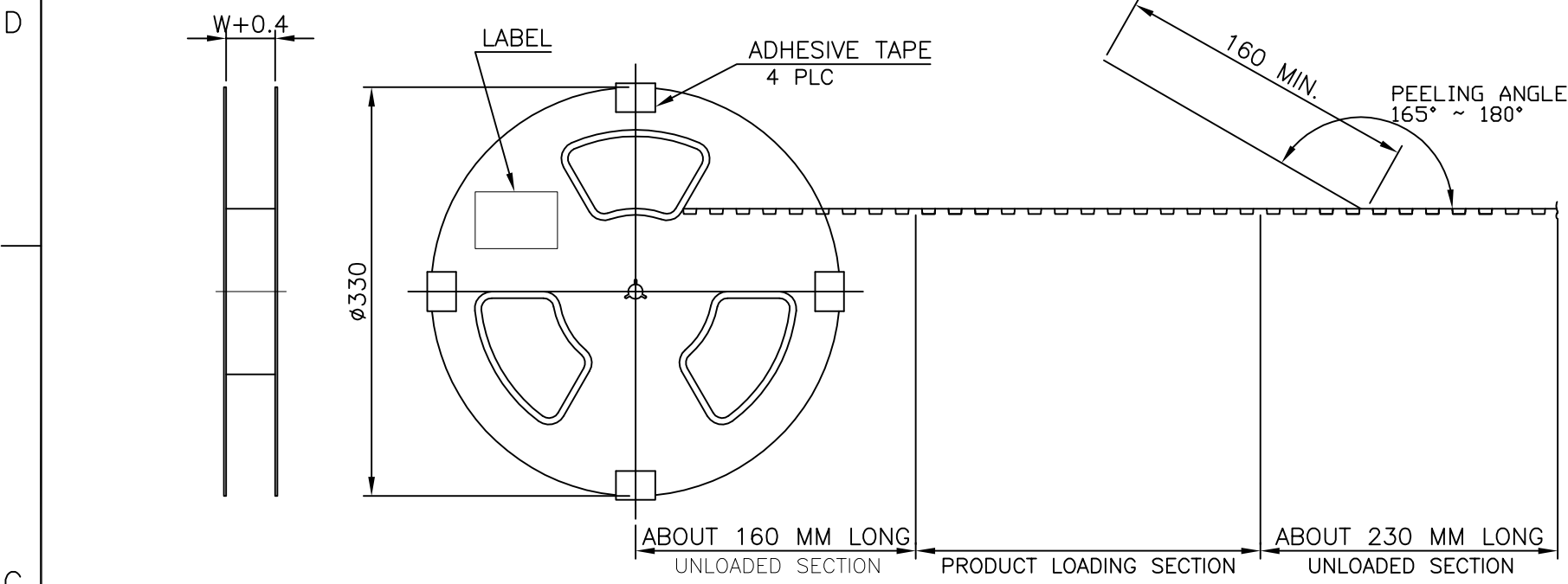
SHEET

2 of 3

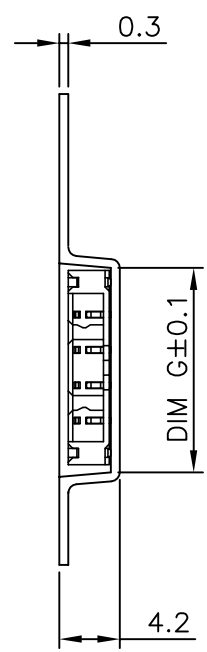
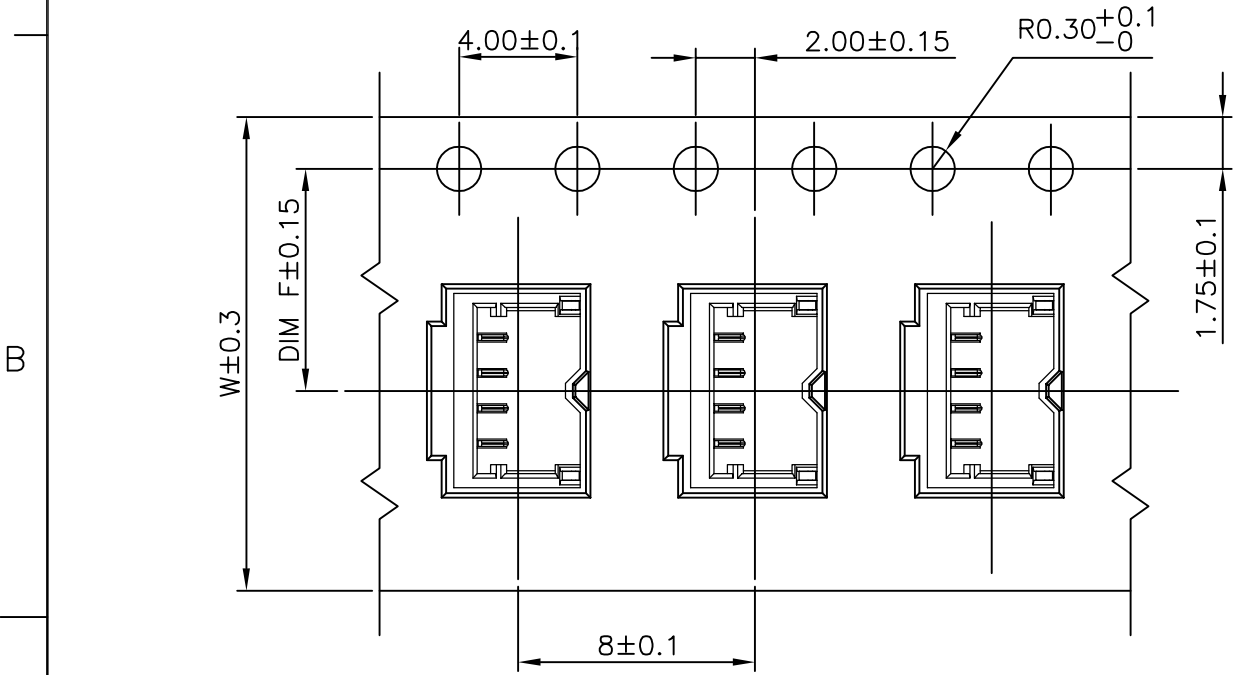
REV A5

THIS DRAWING IS UNPUBLISHED. RELEASED FOR PUBLICATION
 © COPYRIGHT 2011 BY TYCO ELECTRONICS CORPORATION. ALL RIGHTS RESERVED.

| LOC | DIST | REVISIONS | | | | | |
|-----|------|-----------|-----|--------------|------|-----|------|
| DW | | P | LTR | DESCRIPTION | DATE | DWN | APVD |
| | | | | SEE SHEET 1. | | | |



- NOTES :
- MATERIAL :
 - 1.1 COVER TAPE : P.S., COLOR: TRANSPARENT
 - 1.2 CARRIER TAPE : P.S.
 - 1.3 PARTITION : EPE
 - 1.4 BOX: CORRUGATED FIBER
 - DIMENSION :
 - 2.1 REEL : SEE DRAWING
 - 2.2 BOX : SEE DRAWING
 - CARRIER TAPES, COVER TAPES, REELS AND TAPED COMPONENTS MUST MEET THE REQUIREMENTS DEFINED PER EIA-481-B.
 - PEELING RESISTANCE : 10gf~130gf
 - PEELING SPEED : 300mm/MINUTES



| 9.35 | 24.0 | 11.50 | 4000 | 7 | 28000 | 6.71 | 2.11 | 06 | 1909782-5 |
|-------|-------|-------|----------|--------------|----------------|----------|----------|-----------------|-------------|
| 8.15 | 16.0 | 7.50 | 4000 | 7 | 28000 | 5.94 | 1.67 | 05 | 1909782-4 |
| 6.95 | 16.0 | 7.50 | 4000 | 7 | 28000 | 5.53 | 1.26 | 04 | 1909782-3 |
| 5.75 | 16.0 | 7.50 | 4000 | 7 | 28000 | 5.12 | 0.85 | 03 | 1909782-2 |
| 4.55 | 12.0 | 5.50 | 4000 | 7 | 28000 | 4.66 | 0.47 | 02 | 1909782-1 |
| DIM G | DIM W | DIM F | PCS/TAPE | REELS/CARTON | QUANTITY (PCS) | G/W (Kg) | N/W (Kg) | NO. OF CONTACTS | PART NUMBER |

THIS DRAWING IS A CONTROLLED DOCUMENT.

| | | | |
|----------------|--|------------------|--|
| DIMENSIONS: mm | TOLERANCES UNLESS OTHERWISE SPECIFIED: | DWN | TE Connectivity |
| | 0 PLC ± - | CHK | NAME |
| | 1 PLC ± 0.3 | APVD | 1.2mm PITCH, BOARD TO WIRE CONNECTOR WAFER, TOP ENTRYX |
| | 2 PLC ± 0.2 | PRODUCT SPEC | SIZE |
| | 3 PLC ± 0.15 | APPLICATION SPEC | CAGE CODE |
| | 4 PLC ± - | WEIGHT | DRAWING NO |
| | ANGLES ± 3' | CUSTOMER DRAWING | RESTRICTED TO |
| MATERIAL | FINISH | | A3 00779 C=1909782 |
| | | SCALE | SHEET 3 of 3 |
| | | | REV A5 |

单击下面可查看定价，库存，交付和生命周期等信息

[>>TE Connectivity\(泰科\)](#)