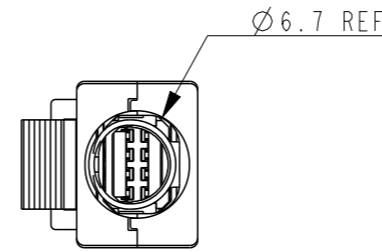
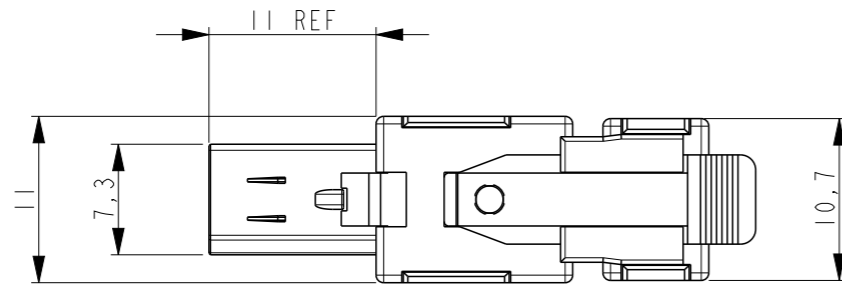
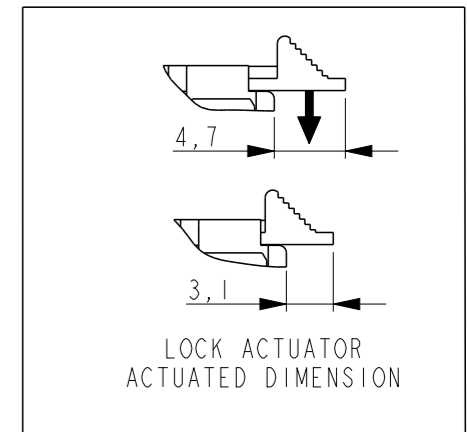


P/N 2069250-1 AS SHOWN:

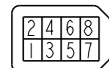
P	LTR	DESCRIPTION	DATE	DWN	APVD
	C	REVISED	01OCT2009	T.S	N.Y
	D	ECR-18-010764	27JUL2018	P.P	P.J
	D1	NOTE 5 ADDED (PROP 65 WARNING)	25AUG2020	SS	JDB
	D2	REMOVED SHEET3; INFO MOVED TO SH.1	17NOV2020	SM	PP



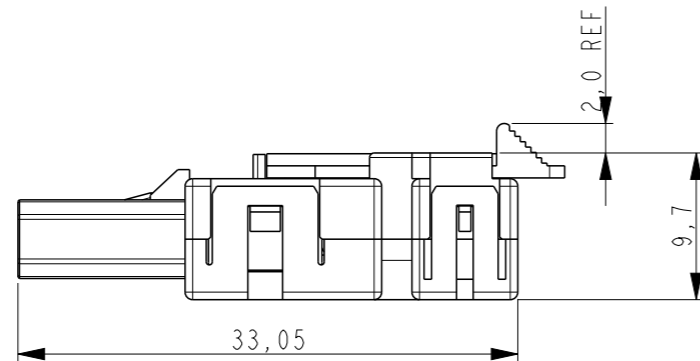
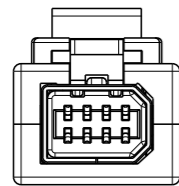
**WARNING:** This product can expose you to chemicals including **ANTIMONY TRIOXIDE** which is known to the state of California to cause cancer. For more information, visit [www.P65Warnings.ca.gov](http://www.P65Warnings.ca.gov).



D-SHAPE TYPE 1



CIRCUIT NO.

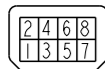


1. APPLICABLE CABLE RECOMMENDED AWG30~26 X 8C  
MAX AWG22 X4C  
OVERALL DIAMETER 6.7MAX.
2. DATE CODE IS DESCRIBED ON THE BUNDLED CUSTOMER DRAWING.
3. THE PRODUCT OF THIS DRAWING NO. IS PACKED INDIVIDUALLY IN PACKAGE OF EXCLUSIVE USE.  
BEFORE THIS KIT IS PACKED TO TRAY, ITEM 6 SHOULD BE ASSEMBLED TO ITEM 7.
4. MATERIALS:
  - HEAT SHRINKABLE TUBE: CROSS-LINKED POLYOLEFIN
  - COPPER FOIL TAPE: ELECTROLYSIS COPPER FOIL, ACRYLIC ADHESIVE MATERIAL
  - BOTTOM COVER: POLYESTER OF GLASS FILLED THERMO PLASTIC(UL94V-0)
  - TOP COVER,EJECTOR EXT VER.: POLYESTER OF GLASS FILLED THERMO PLASTIC(UL94V-0)
  - PLUG LOCK ACTUATOR: POLYESTER OF GLASS FILLED THERMO PLASTIC(UL94V-0)
  - LOCK EJECTOR EXT VER: POLYESTER OF GLASS FILLED THERMO PLASTIC(UL94V-0)
  - PLUG HSG COVER: POLYESTER OF GLASS FILLED THERMO PLASTIC(UL94V-0)
  - PLUG HSG SUB ASSY:
    - HSG:POLY-AMID OF GLASS FILLED THERMO PLASTIC(UL94V-0)
    - CONTACT PLATING:COPPER ALLOY

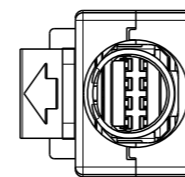
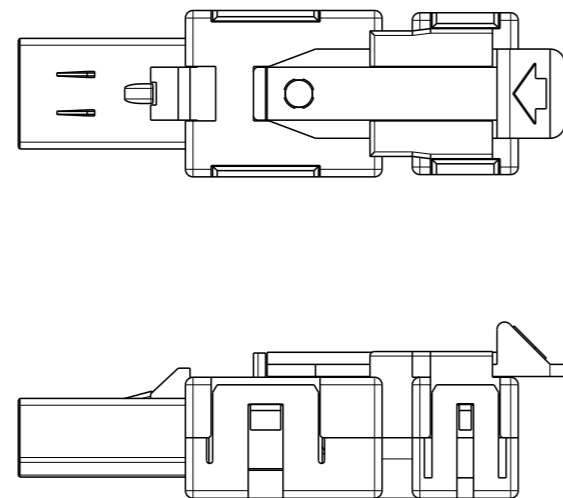
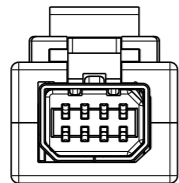
UNDER ALL SURFACE: Ni PLATING 1.27µm. MIN.  
TOP CONTACT AREA: Au PLATING 0.5µm. MIN.  
SOLDERING AREA: Au FLASH

P/N 1-2069250-2 AS SHOWN:

D-SHAPE TYPE 2



CIRCUIT NO.



5 PROP 65 WARNING LABEL:

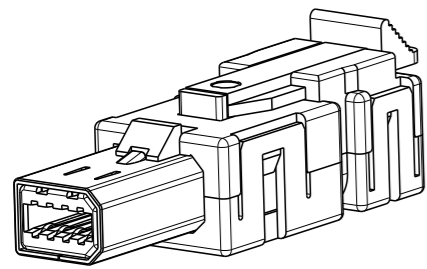
- THE WARNING LABEL ON THE PRODUCT OR LOWEST LEVEL PACKAGING.
- CHEMICAL NAME: ANTIMONY TRIOXIDE

THIS DRAWING IS A CONTROLLED DOCUMENT.		DWN	03DEC2008		 TE Connectivity
		CHK	03DEC2008		
		APVD	03DEC2008		
		PRODUCT SPEC	108-78405		
DIMENSIONS: mm		TOLERANCES UNLESS OTHERWISE SPECIFIED: ±0.3		NAME INDUSTRIAL MINI I/O PLUG CONN. KIT TYPE 1 and 2, SOLDER LOCK EJECTOR EXTEND VERSION	
		0 PLC ± 1 PLC ± 2 PLC ± 3 PLC ±0,013 4 PLC ± ANGLES ±		APPLICATION SPEC 114-5431	
MATERIAL SEE TABLE 表参照		FINISH SEE TABLE 表参照		WEIGHT -	
		CUSTOMER DRAWING		SIZE A3	CAGE CODE 00779
				DRAWING NO C-2069250	
				RESTRICTED TO	
				SCALE 2:1	SHEET 1 OF 2
				REV D2	

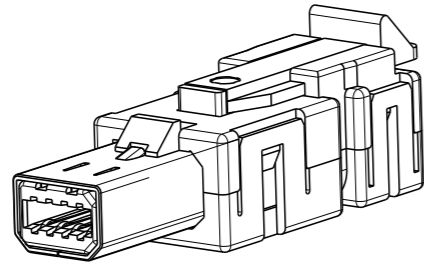
REVISIONS

P	LTR	DESCRIPTION	DATE	DWN	APVD
-	-	SEE SHEET 1	-	-	-

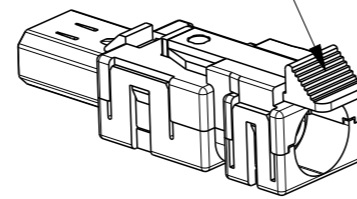
D-SHAPE TYPE 1



D-SHAPE TYPE 2

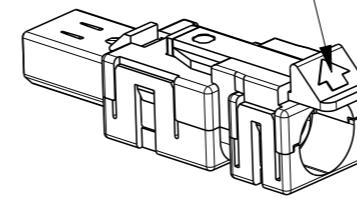


ACTUATOR TYPE A1 or A2

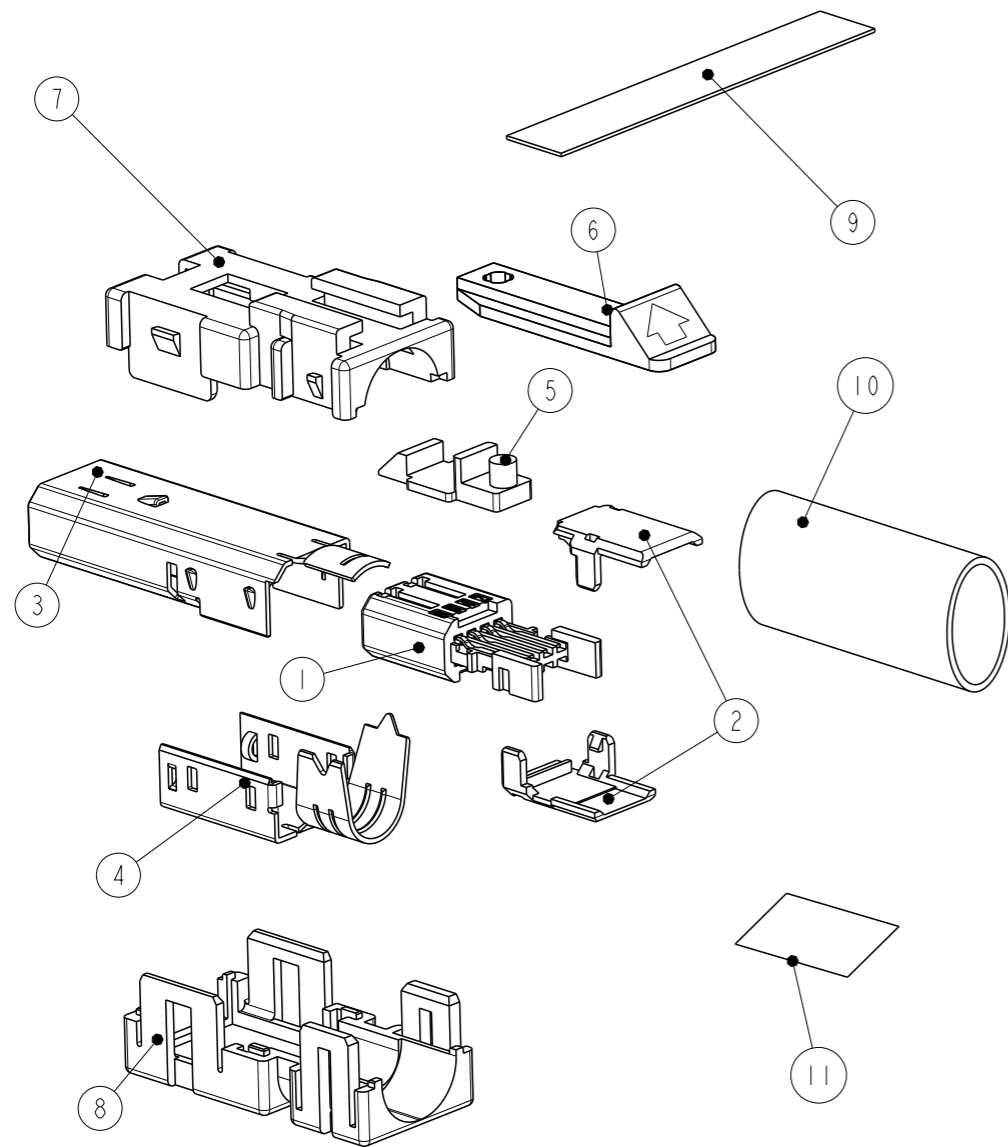


SCALE 3:2

ACTUATOR TYPE B



SCALE 3:2



INACTIVE	INACTIVE	INACTIVE	INACTIVE	INACTIVE	INACTIVE	ACTUATOR TYPE	COLOR	PART NAME	ITEM NO.
TYPE 2	TYPE 1	TYPE 2	TYPE 1	TYPE 2	TYPE 1			CUSTOMER DRAWING NO. 2069250 PRINTED ON A4 SIZE	11
								HEAT SHRINKABLE TUBE	10
								COPPER FOIL TAPE	9
							BLACK	BOTTOM COVER	8
							BLACK	TOP COVER, EJECTOR EXTENSION VERSION	7
-	-	-	-	-	-	B	ORANGE	PLUG LOCK ACTUATOR	6
		-	-	-	-	A2	ORANGE		
-	-			-	-	B	WHITE		
-	-	-	-	-	-	A2	WHITE		
						A1	BLACK	LOCK EJECTOR EXTENSION VERSION	5
							BLACK	BOTTOM SHELL	4
	-		-		-			TOP SHELL	3
2	2	2	2	2	2			PLUG HOUSING COVER	2
	-		-		-			PLUG HOUSING SUB ASSY	1
-		-		-					
1-2069250-3	2069250-3	1-2069250-2	2069250-2	1-2069250-1	2069250-1				

THIS DRAWING IS A CONTROLLED DOCUMENT.

DWN S. INOMATA 03DEC2008  
 CHK A. OOISHI 03DEC2008  
 APVD A. OOISHI 03DEC2008

TE Connectivity

INDUSTRIAL MINI I/O  
 PLUG CONN. KIT TYPE 1 and 2,  
 SOLDER LOCK EJECTOR EXTEND VERSION

108-78405  
 APPLICATION SPEC  
 114-5431

SIZE A3 CAGE CODE 00779 DRAWING NO. C-2069250 RESTRICTED TO

WEIGHT -

CUSTOMER DRAWING SCALE 2:1 SHEET 2 OF 2 REV D2

单击下面可查看定价，库存，交付和生命周期等信息

[>>TE Connectivity\(泰科\)](#)