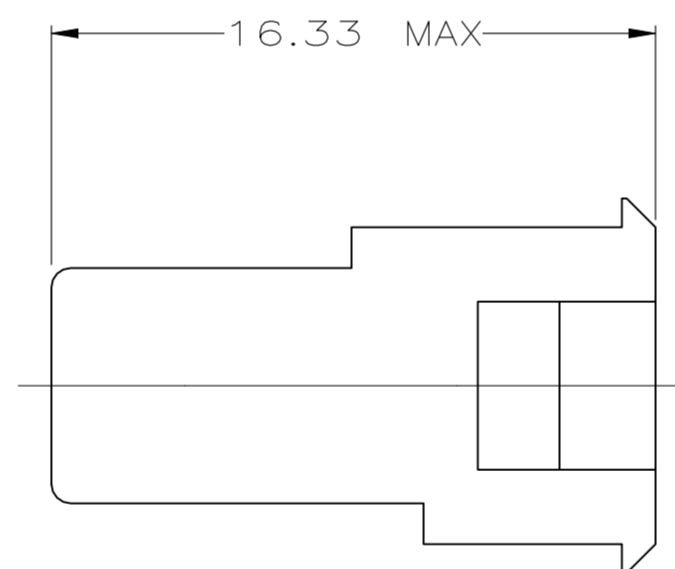
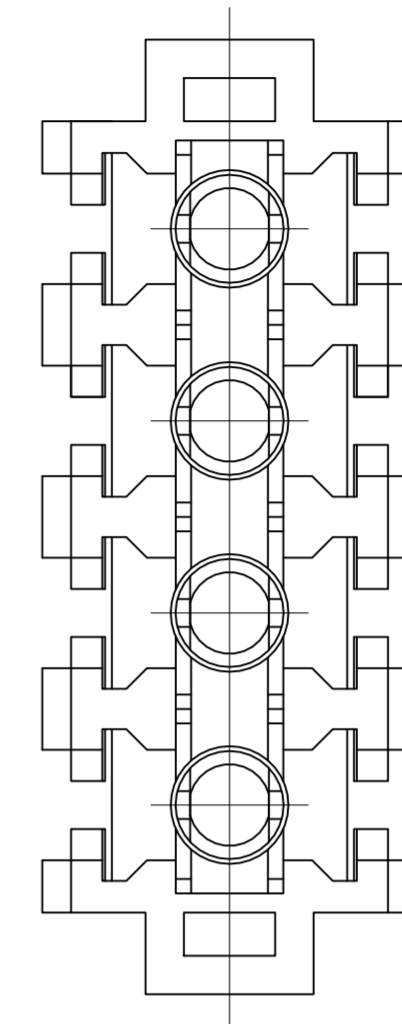
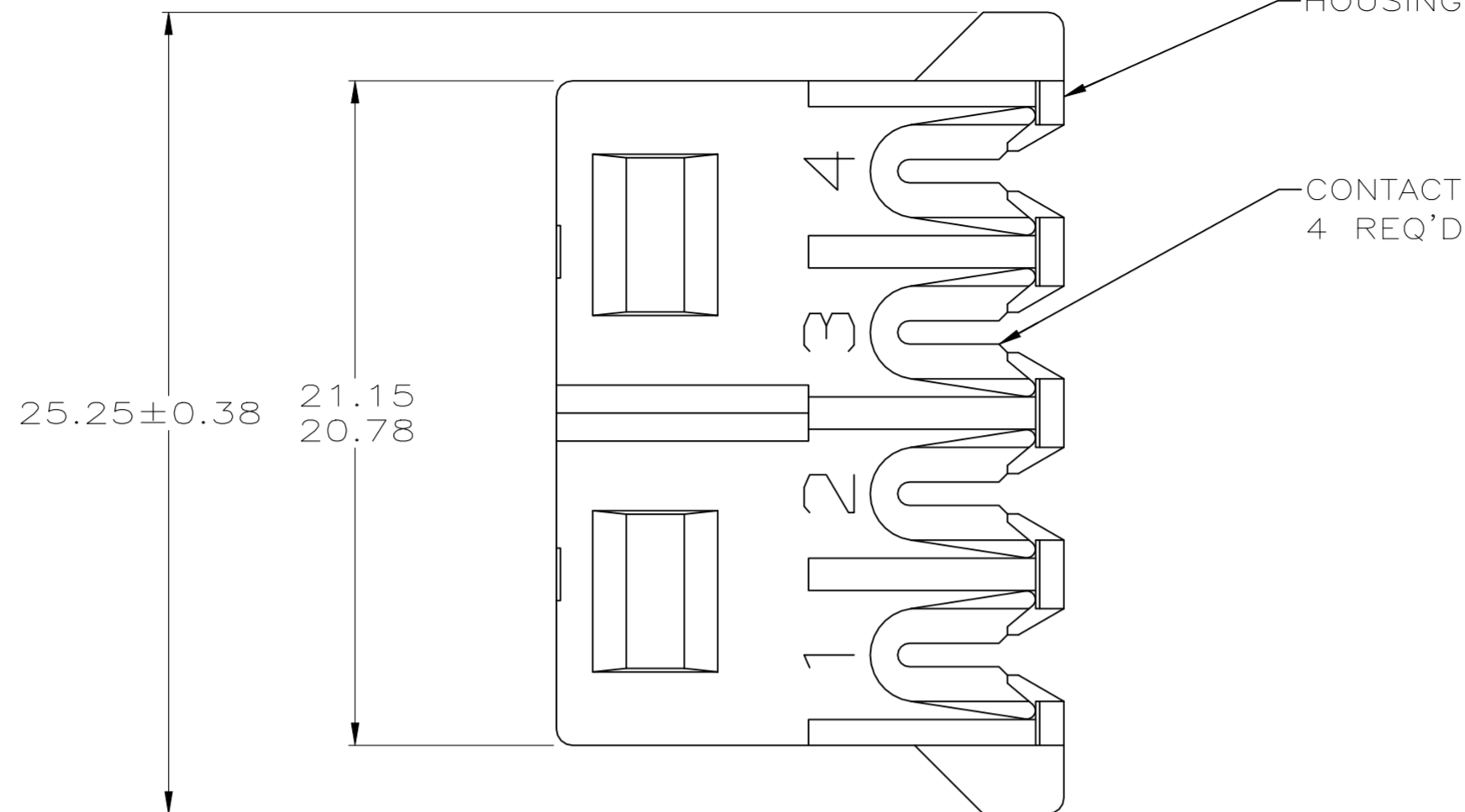
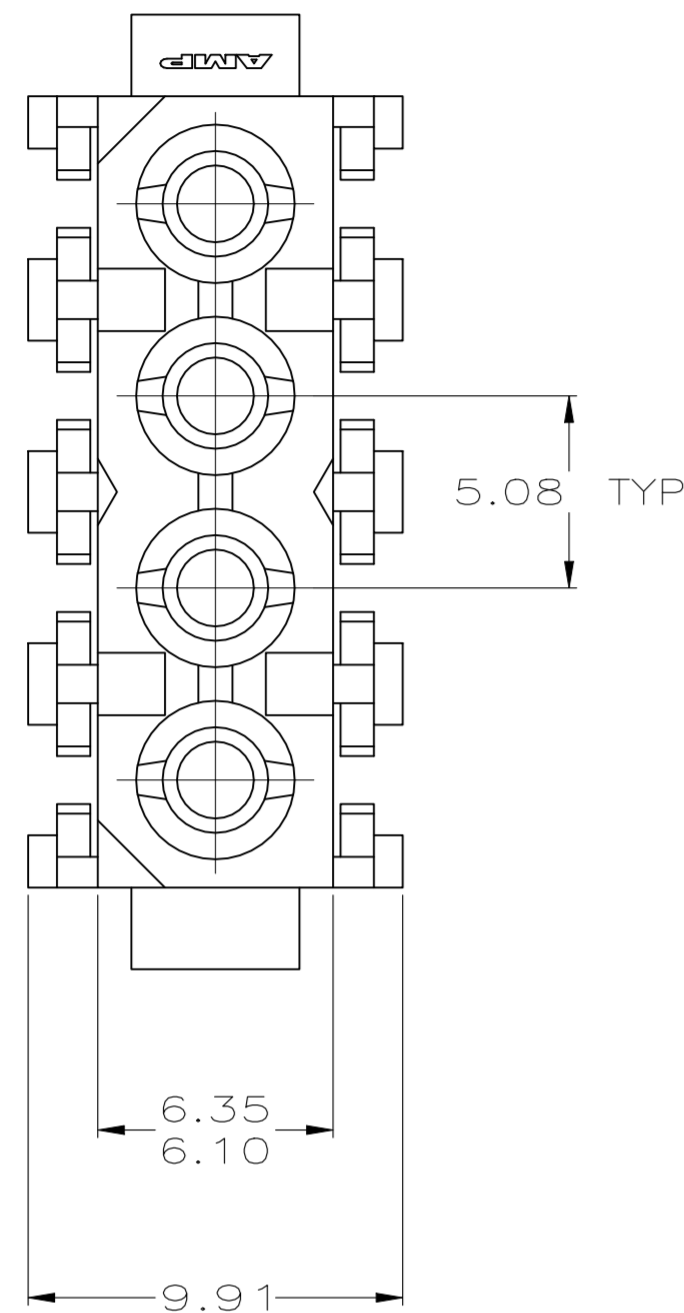


REVISIONS				
P	LTR	DESCRIPTION	DATE	APVD
C2		REVISED PER ECR-21-117185	22OCT2021	PJ VS



- 1. NOTE DELETED.
- 2. DIMENSION SHOWN REPRESENT PRODUCT IN DRY CONDITION. ADDITIONAL 2% GROWTH DUE TO END USE LOCATION MOISTURE ABSORPTION MAY OCCUR AND SHOULD BE ACCOUNTED FOR.

COLOR	WIRE SIZE	CONTACT MATERIAL AND FINISH	HOUSING MATERIAL	PART NO
BLUE	1.25 mm ² (16 AWG)	PHOS BRONZE, TIN	NYLON,UL 94V-0	794036-4
RED	0.4 mm ² (22 AWG)	PHOS BRONZE, TIN	NYLON,UL 94V-0	794036-3
YELLOW	0.5 mm ² (20 AWG)	PHOS BRONZE, TIN	NYLON,UL 94V-0	794036-2
ORANGE	0.8 mm ² (18 AWG)	PHOS BRONZE, TIN	NYLON,UL 94V-0	794036-1

MM	IN	MM	IN
9.91	.390	-	-
6.35	.250	25.25	.994
6.10	.240	21.15	.833
5.08	.200	20.78	.818
0.13	.005	16.33	.643

CONVERSION TABLE

THIS DRAWING IS A CONTROLLED DOCUMENT.

DWN K. WHITAKER 2-4-94		PLUG ASSEMBLY, INSULATION DISPLACEMENT, COMMERCIAL MATE-N-LOK(TM)
CHK R. SWING 2-4-94		
APVD -	NAME	SIZE A2
PRODUCT SPEC -	DRAWING NO C=794036	CAGE CODE 00779
APPLICATION SPEC -	WEIGHT 0.000000	SCALE 5:1
MATERIAL SEE TABLE	FINISH SEE TABLE	SHEET 1 OF 1
CUSTOMER DRAWING		REV C2

单击下面可查看定价，库存，交付和生命周期等信息

[>>TE Connectivity\(泰科\)](#)