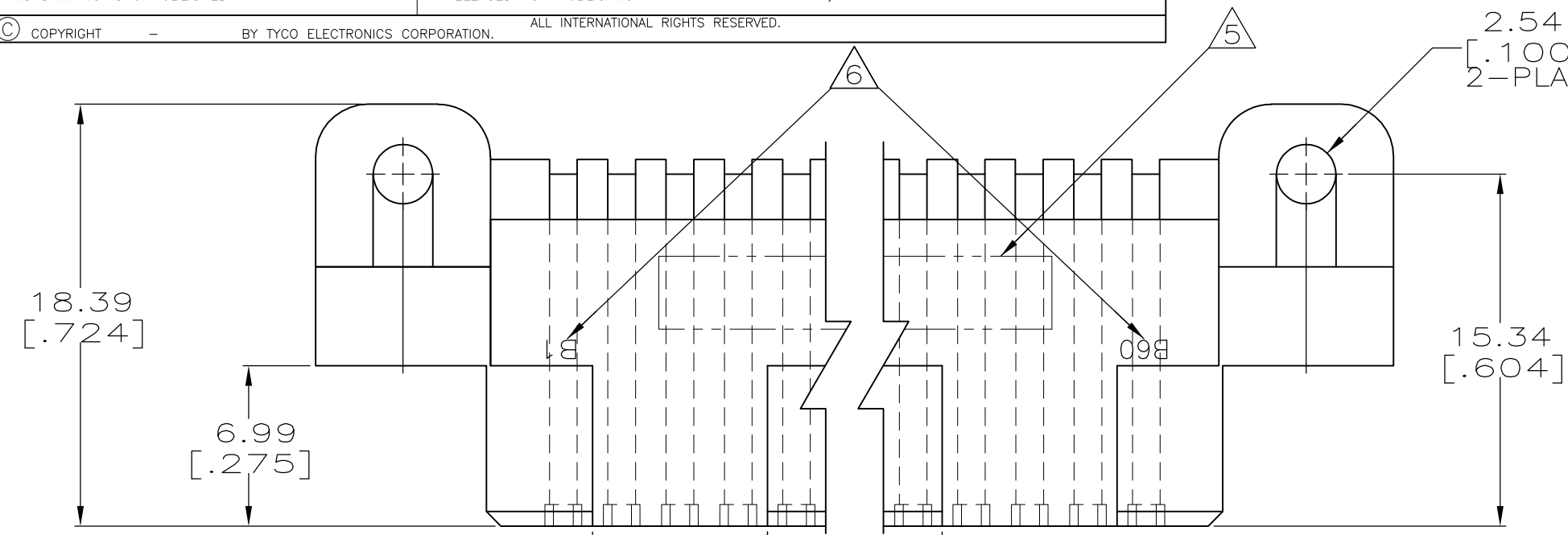
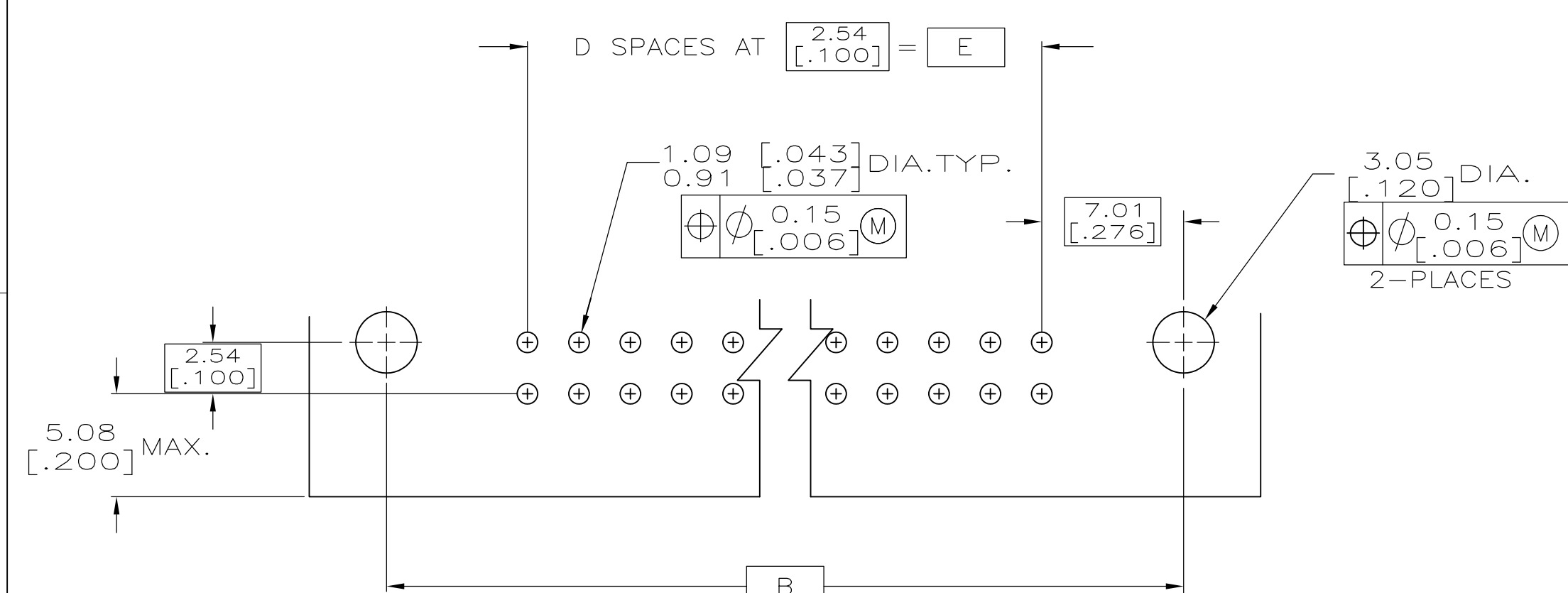
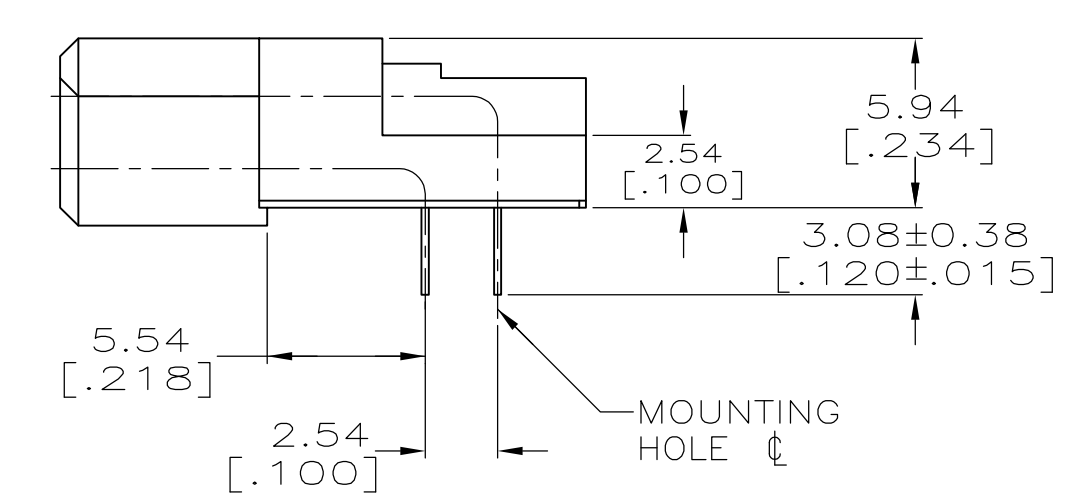
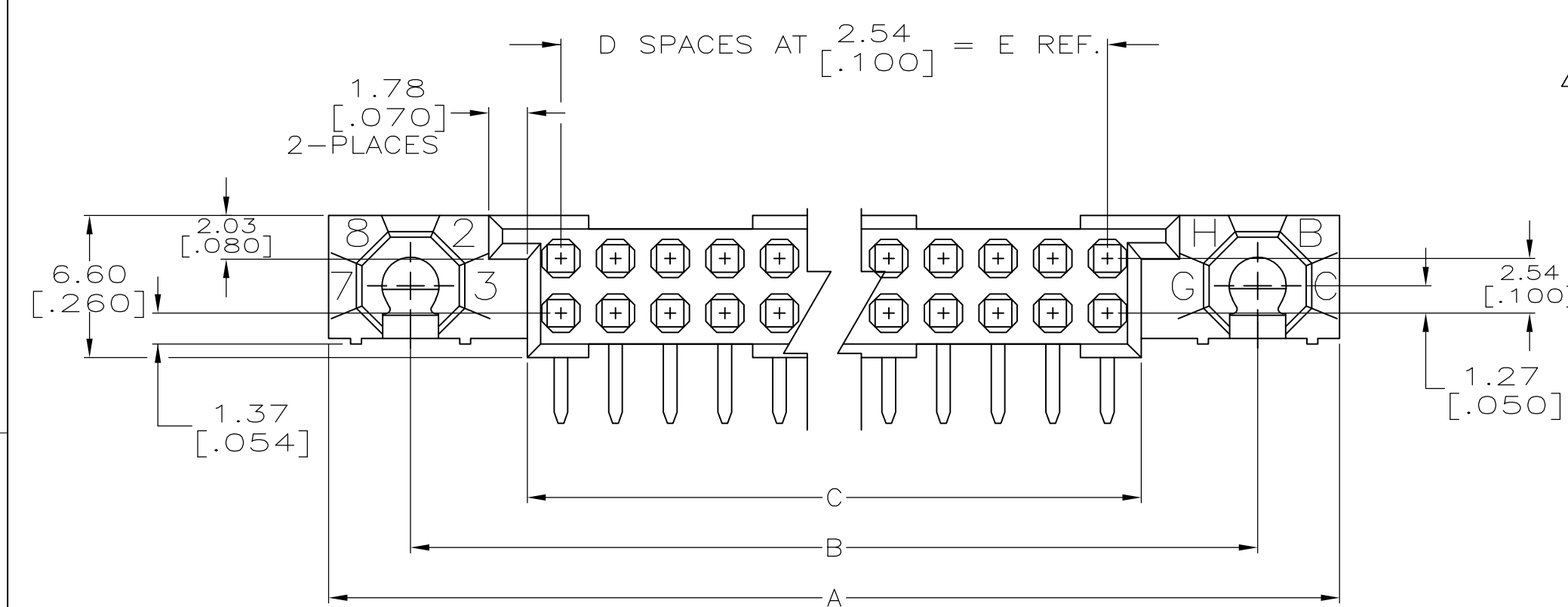


LOC		DIST		REVISIONS			
AD	00	P	LTR	DESCRIPTION	DATE	DWN	APVD
		D2	REV PER	ECO-09-020034	08OCT2009	BC	AS



- ① HOUSING MATERIAL: POLYPHENYLENE SULFIDE, COLOR NATURAL.
- ② CONTACT MATERIAL: COPPER ALLOY
- ③ CONTACT FINISH : 0.00127-0.00254 [.000050 -.000100] NICKEL UNDERPLATE ALL OVER, 0.00127 [.000050] GOLD IN CONTACT AREA, TIN-LEAD ON SOLDER LEADS.
- ④ SOLDER LEADS MUST FIT HOLE PATTERN SHOWN IN RECOMMENDED P.C. BOARD LAYOUT.
- ⑤ MARKED THE FOLLOWING: 19207-12346362, MFR-00779-535394-1 AND DATE CODE, IN APPROXIMATE AREA SHOWN, (WHITE).
- ⑥ ROW "B", FIRST AND LAST CONTACT IDENTIFICATION NUMBER, AND HASH MARK EVERY TENTH CAVITY INK STAMPED, (WHITE).
- ⑦ CONNECTORS HAVE GROUP "A" AND "B" INSPECTION AND CERTIFICATE OF COMPLIANCE CODE "A".
- ⑧ QUANTITIES OF VOID CORING ARE DEPENDENT ON THE POSITION SIZE OF THE HOUSING.



RECOMMENDED PC BOARD LAYOUT ④

149.86 [5.900]	59	153.01 [6.024]	163.83 [6.450]	171.45 [6.750]	120	535394-1
E	D	C	B	A	POSN	PART NUMBER

THIS DRAWING IS A CONTROLLED DOCUMENT.		DWN D.HOFFMAN 11/29/89	Tyco Electronics Corporation Harrisburg, PA 17105-3608	
DIMENSIONS: mm [INCHES]		CHK G.E.SKIPPER 3/29/94	NAME G.F.SKIPPER	
TOLERANCES UNLESS OTHERWISE SPECIFIED:		APVD G.F.SKIPPER 3/29/94	PRODUCT SPEC	
0 PLC ± -		APPLICATION SPEC		
1 PLC ± -		SIZE A2		
2 PLC ± -		CAGE CODE 00779		
3 PLC ± .005		DRAWING NO G-535394		
4 PLC ± ± -		RESTRICTED TO		
ANGLES ± ± -		WEIGHT		
FINISH		CUSTOMER DRAWING		
① ②		SCALE 4:1 SHEET 1 OF 1 REV D2		

单击下面可查看定价，库存，交付和生命周期等信息

[>>TE Connectivity\(泰科\)](#)