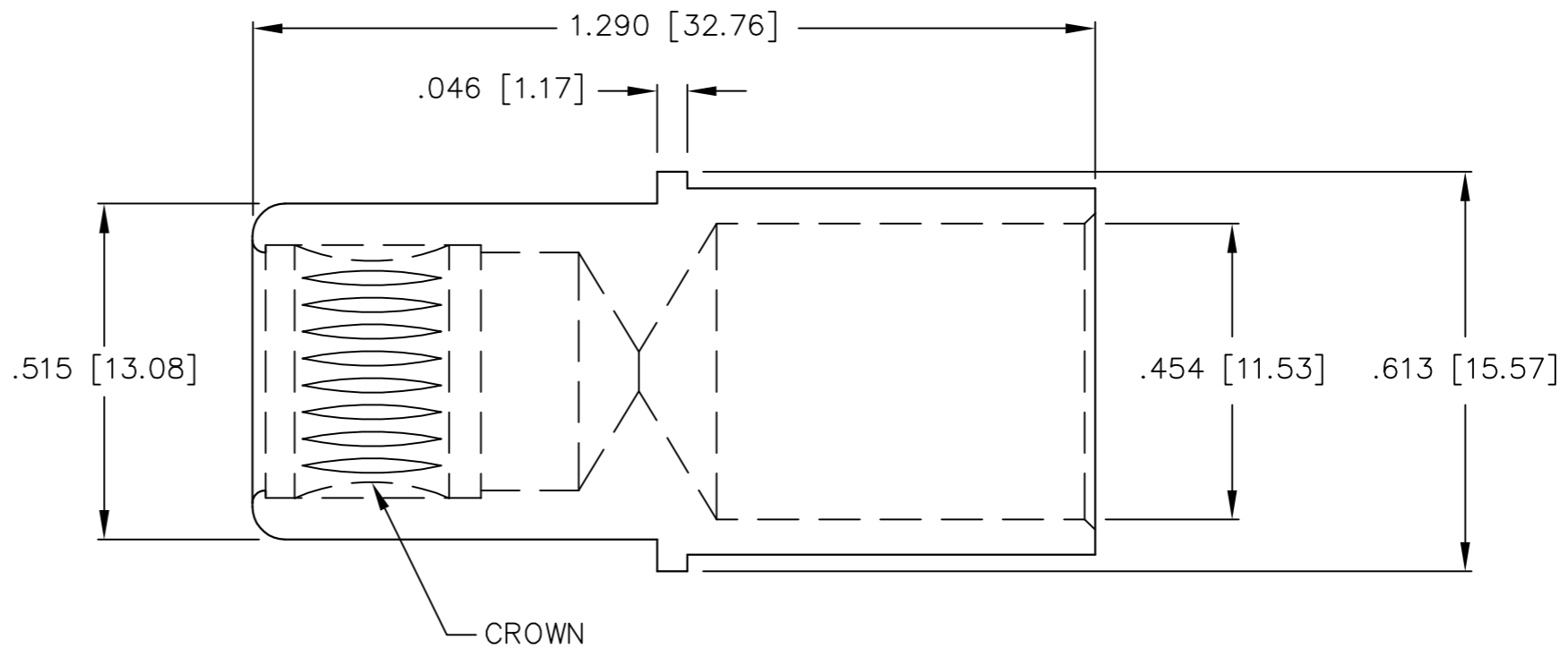


This drawing involves proprietary design rights of Tyco Electronics Corporation, and all design, manufacture, reproduction, use and sale rights regarding the same are expressly reserved. It is submitted for a specific purpose and the recipient by accepting this drawing, assumes custody and control and agrees to take reasonable precautions; (a) that this drawing will not be copied and reproduced, in whole or in part, or its contents revealed in any manner, or to any person except to meet the purpose for which it was delivered and (b) that any special features peculiar to this design will not be incorporated in other projects without the expressed written permission of Tyco Electronics Corporation.

REVISIONS			
EC	REV	DESCRIPTION	DATE
CPR	A	NEW RELEASE	12/05/05



4. FINISHES:
 SOCKET BODY: SILVER PLATED.
 CROWN: GOLD PLATED.
3. MATERIALS:
 SOCKET BODY: COPPER ALLOY.
 CROWN: BeCu

2. ITEMS PROVIDED TO THIS SPECIFICATION SHALL BE IDENTIFIED WITH THE FOLLOWING MINIMUM INFORMATION ON THE SHIPPING PACKAGE MFG IDENT, PART NUMBER AND DATE CODE OF MANUFACTURE.

1. PART NUMBER AND/OR DESIGN CHANGES AFFECTING ITEM INTERCHANGEABILITY REQUIRE PRIOR TYCO APPROVAL AND AUTHORIZATION BY REVISION TO THIS DRAWING.

NOTES: UNLESS OTHERWISE SPECIFIED

INCH OR INCH (MM) THIRD ANGLE PROJECTION UNLESS OTHERWISE SPECIFIED DIMENSIONS ARE IN INCHES (METRIC) TOLERANCES ANGLES ± .5° DECIMALS .XXX ± .010 (.25) .XX ± .02 (.3)	DRAWN T. FARLEY/M. ALIM	DATE 12/05/05	Tyco Electronics Corporation Menlo Park, Ca 94025			
	CHECKED		TITLE			
	APPROVED		CONTACT, SOCKET, SIZE #0 CRIMP, SINGLE CROWN PN 6648405-1			
	APPROVED	D. CHAU	12/05/05	SIZE	DWG NUMBER	REV.
	DCA APPROVED	M. ALIM	12/05/05	B	C = 6648405	A
	ACAD FILE NUMBER C6648405A.DWG		DWG SCALE 4=1		SH 1 OF 1	

单击下面可查看定价，库存，交付和生命周期等信息

[>>TE Connectivity\(泰科\)](#)