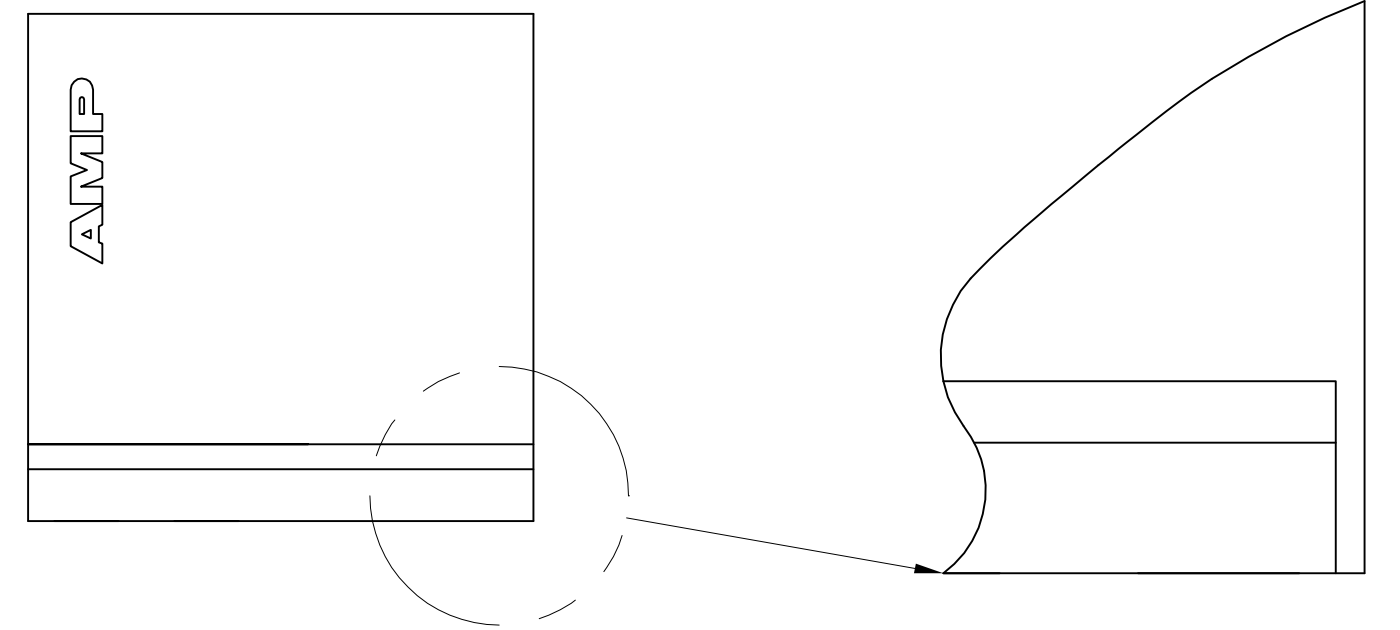
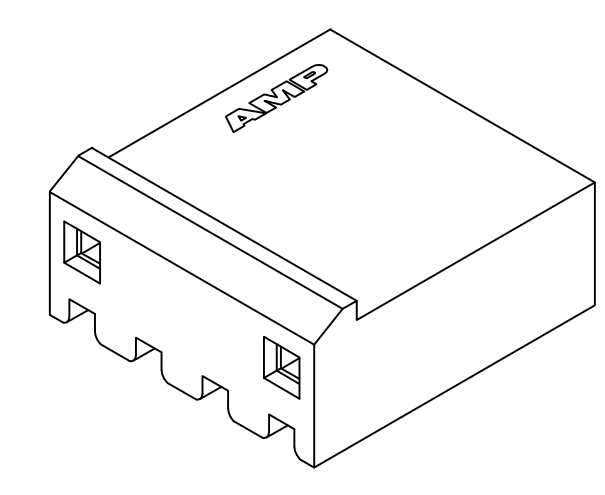
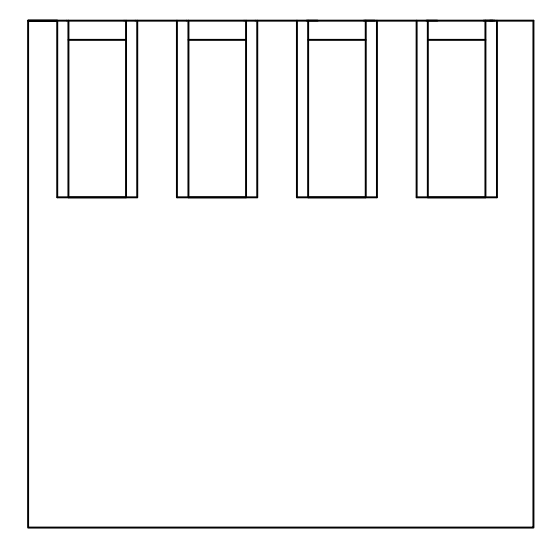
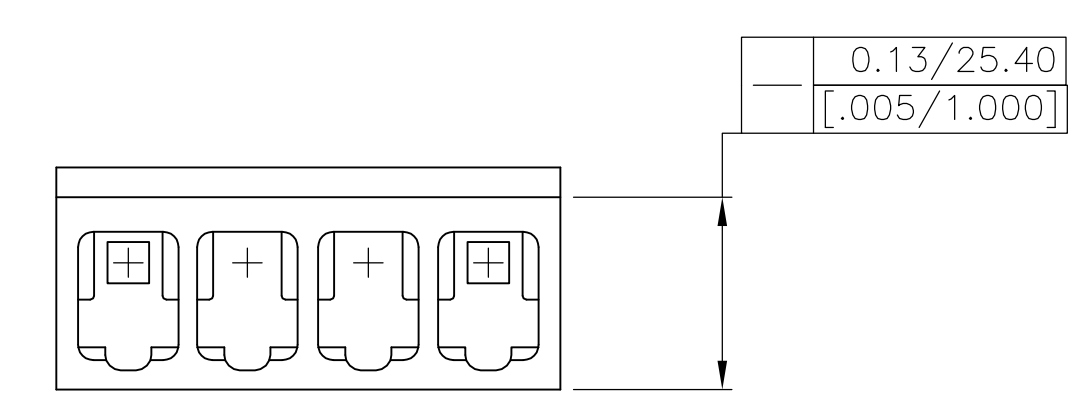
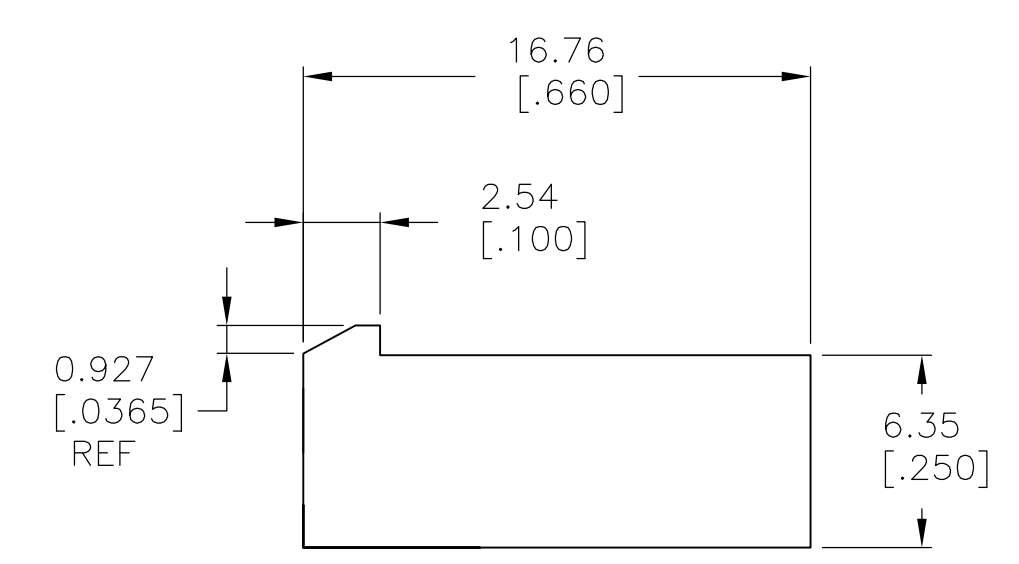
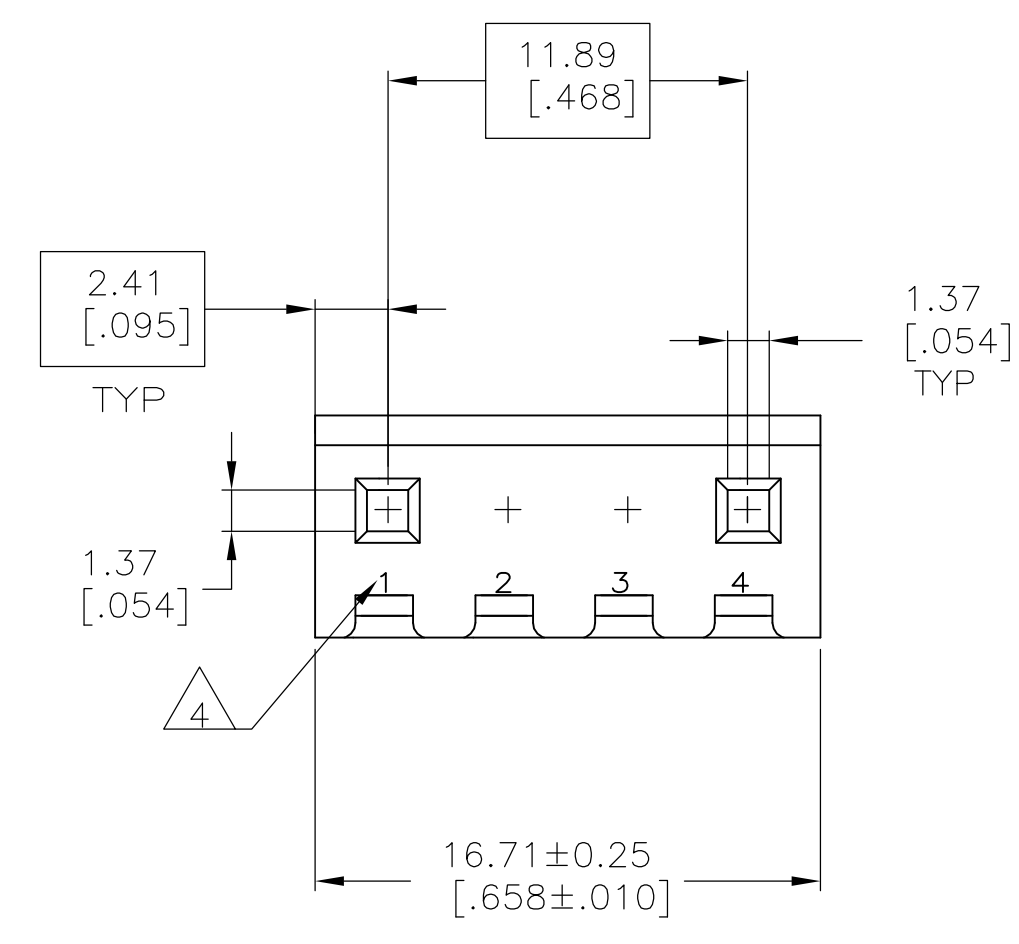


LOC	DIST	REVISIONS			
CM	00	REV	DESCRIPTION	DATE	DWN
		B	REVISED PER ECR-13-003272	18JUN13	KW



SCALE 10:1  $\triangle 6$

1. UNIT ACCEPTS 1.14 [.045] SQUARE OR ROUND POST.
2. UNIT ACCEPTS STANDARD SL-156 CONTACTS.
3. UNIT ACCEPTS KEYING PLUG 640254-1 AND KEYING PIN 640255-1.
- $\triangle 4$  CIRCUIT I.D. NUMBER(S), TO BE LOCATED SEQUENTIALLY AS SHOWN.
5. DIMENSIONS IN BRACKETS ARE IN INCHES.
- $\triangle 6$  OPTIONAL CONSTRUCTION (BOTH CORNERS) UP TO 0.38[.015].
7. ACCEPTS UP TO .110 INCH INSULATION WIRE.



3-DIMENSIONAL MODEL NTS

2 & 3	4	1744137-4
CIRCUIT NO BLOCKED	NO OF CIRCUITS	PART

THIS DRAWING IS A CONTROLLED DOCUMENT.		DIN	K. WHITAKER 16NOV2005	
DIMENSIONS: mm [INCHES]		CHK	D. ROSSI 16NOV2005	
TOLERANCES UNLESS OTHERWISE SPECIFIED:		APP'D	D. ROSSI 16NOV2005	
0 PL	± -	NAME		
1 PL	± -	HOUSING WITH LOCKING RAMP, SL-156, FOR LARGE WIRE INSULATION		
2 PL	± -	APPLICATION SPEC		
3 PL	± 0.13 [.005]	SIZE	CAGE CODE	DRAWING NO
4 PL	± -	WEIGHT	A1	00779
ANGLES	± 0° 30'	CUSTOMER DRAWING		SCALE 4:1
MATERIAL	FINISH	NYLON, UL94V-0, NAT		SHEET 1 OF 1
		REV B		

单击下面可查看定价，库存，交付和生命周期等信息

[>>TE Connectivity\(泰科\)](#)