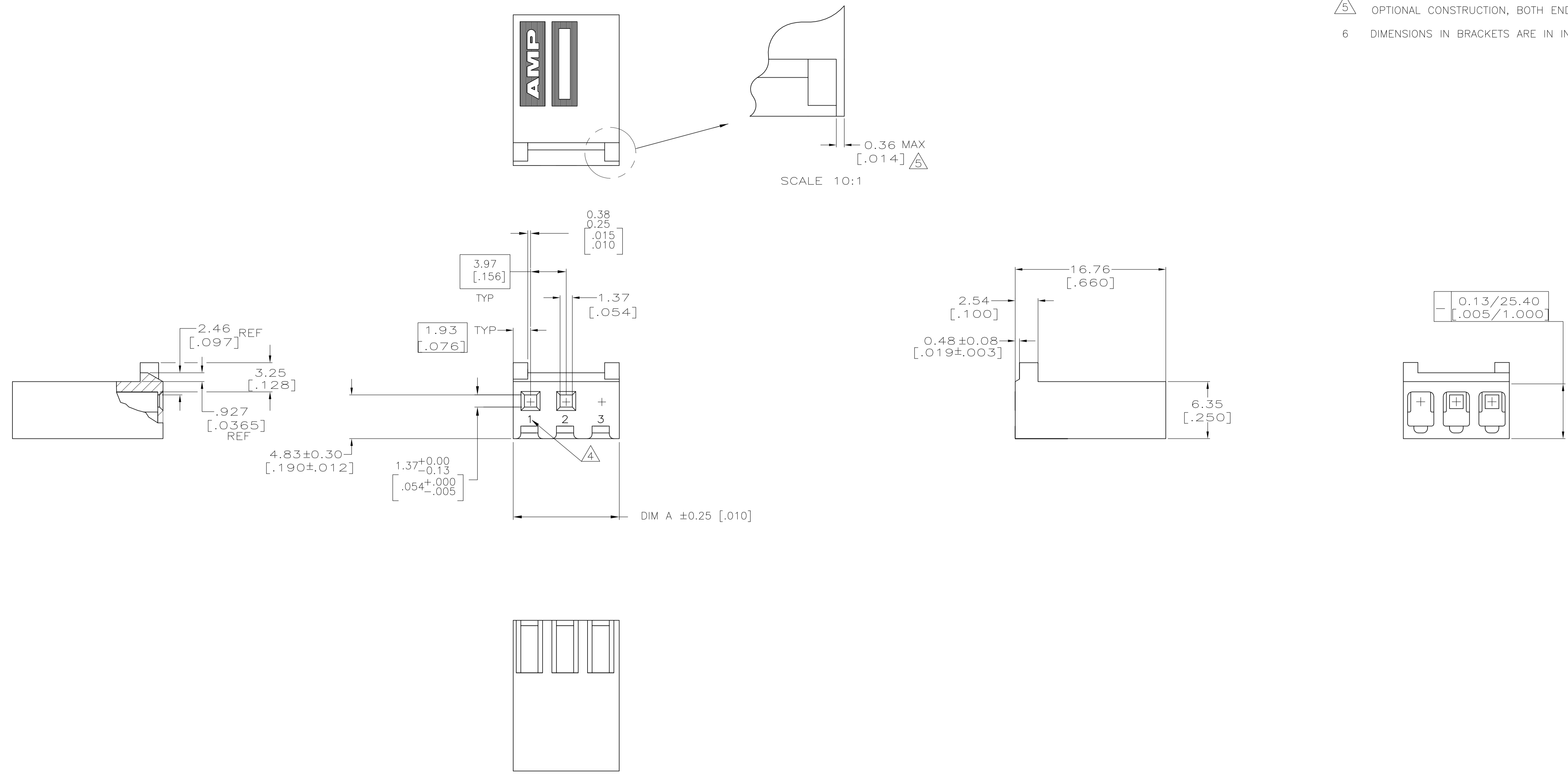


LOC		DIST		REVISIONS			
CM	0	REV	DATE	BY	CHK	APPV	
B		REVISED PER ECO-12-007810	28JUL12	KH	SM		

- 1 UNIT ACCEPTS 1.14[.045] SQUARE OR ROUND POST.
- 2 UNIT ACCEPTS STANDARD SL-156 CONTACTS.
- 3 UNIT ACCEPTS KEYING PLUG 640254-1 AND KEYING PIN 640255-1.
- 4 IDENTIFICATION NUMBER FOR ALL POSITIONS, OR FOR POSITION 1 ONLY, WILL BE LOCATED AS SHOWN.
- 5 OPTIONAL CONSTRUCTION, BOTH ENDS.
- 6 DIMENSIONS IN BRACKETS ARE IN INCHES.



DIM A	NO OF POSN	PART NUMBER
27.69 [1.090]	7	647344-7
19.74 [.777]	5	647344-5
11.81 [.465]	3	647344-3

THIS DRAWING IS A CONTROLLED DOCUMENT.		DIN K WHITAKER 04NOV2005		TE Connectivity	
DIMENSIONS: mm [INCHES]		TOLERANCES UNLESS OTHERWISE SPECIFIED:		NAME	
0 PLC	± -	D ROSSI 04NOV2005		HOUSING WITH LOCKING RAMP AND POLARIZING TABS, POSITION 3 BLOCKED, SL-156	
1 PLC	± -	D ROSSI 04NOV2005		APPLICATION SPEC	
2 PLC	± -	D ROSSI 04NOV2005		SIZE	
3 PLC	± 0.13 [.005]	D ROSSI 04NOV2005		CAGE CODE	
4 PLC	± -	D ROSSI 04NOV2005		DRAWING NO	
ANGLES	± -	D ROSSI 04NOV2005		RESTRICTED TO	
MATERIAL	FINISH	WEIGHT		A1 00779 C=647344	
NYLON, UL 94V-0	-	CUSTOMER DRAWING		SCALE 4:1 SHEET 1 OF 1 REV B	



单击下面可查看定价，库存，交付和生命周期等信息

[>>TE Connectivity\(泰科\)](#)