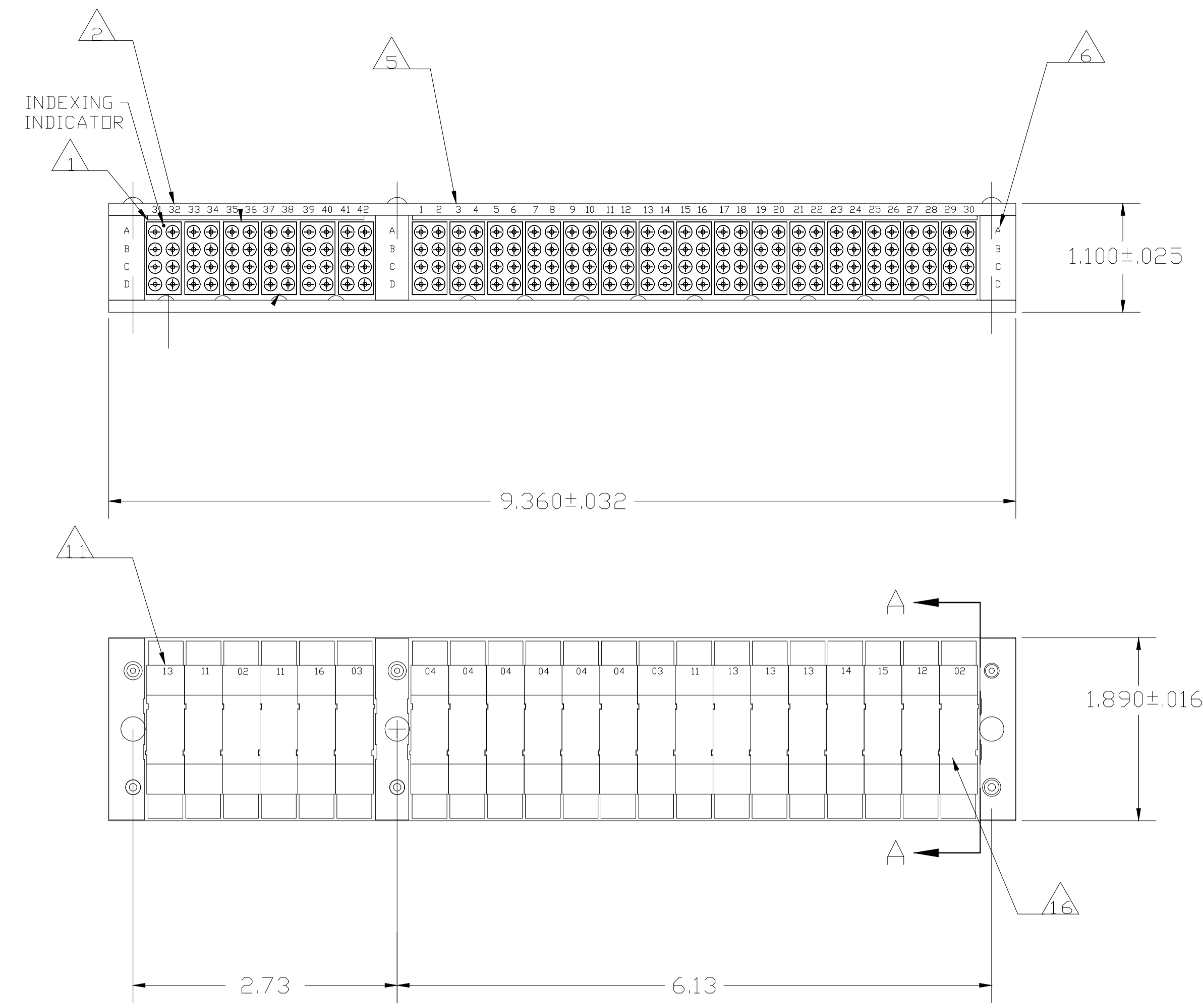
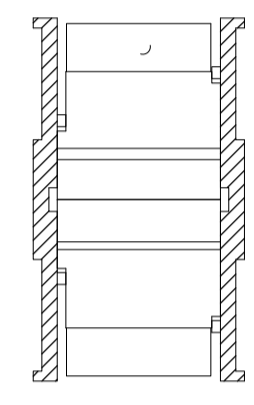


DESCRIPTION	TE PART NO.	MIL PART NO.
CONTACT	1-592404-1	M39029/1-102
SEALING PLUG	592104-2	MS27488-16
INS/EXT TOOL	592155-1	M81969/14-03

REVISIONS				
REV	DATE	DESCRIPTION	BY	APPD
E	11-25-20	REV PER ECD 20-008727	CT	VR

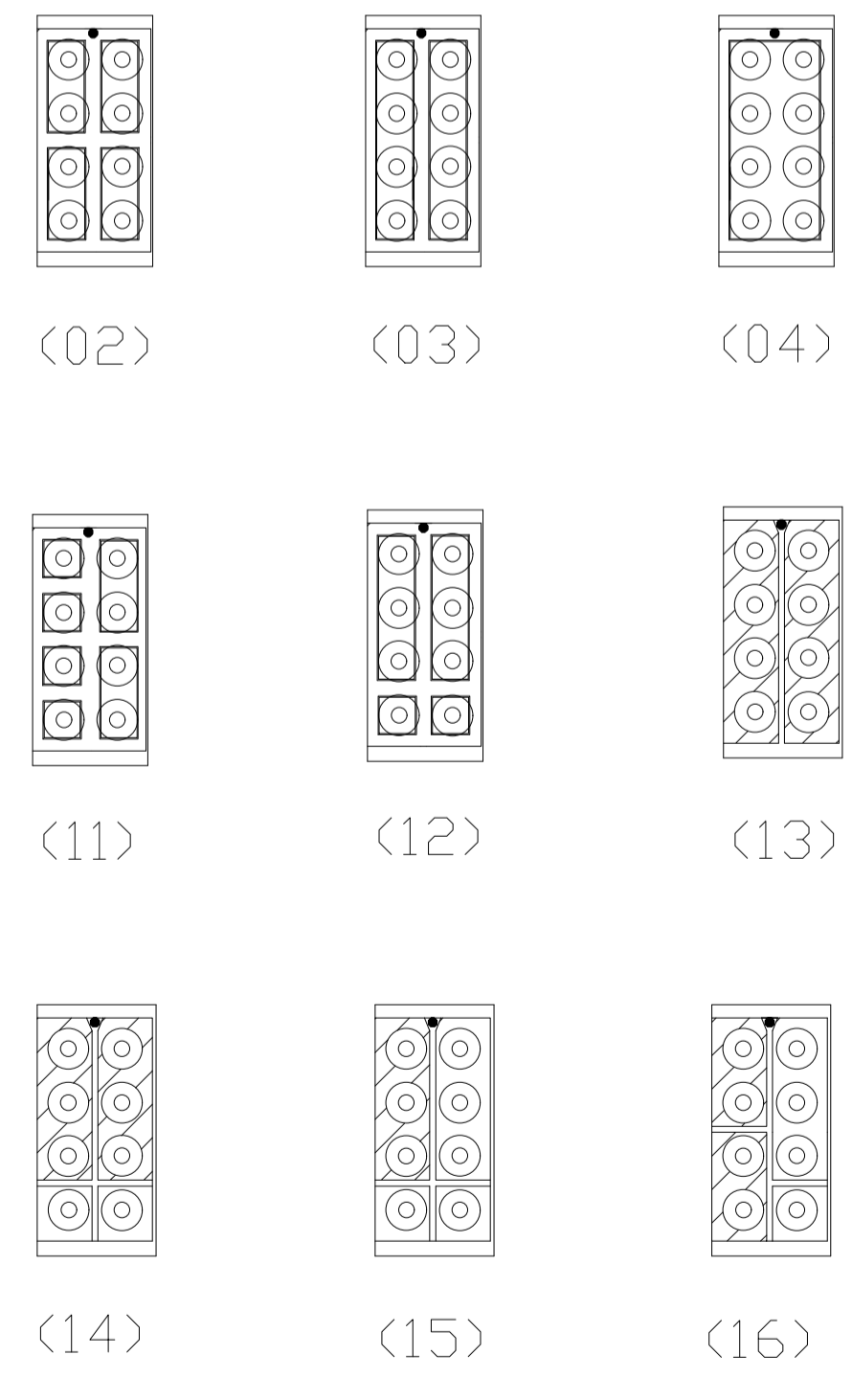


- 1 MODULE ASSEMBLIES ORIENTATED AS SHOWN FROM LOCATION NO. 31 ON RAIL ASSEMBLY.
- 2 MODULE BLOCK MARKED WITH APPROPRIATE BUSSING ARRANGEMENT.
- 3 CUSTOMER PART NO. 97437-121-01A MARKED IN AREA SHOWN. (<-2 ONLY)
- 4 "TE", TE PART NO. AND DATE CODE MARKED IN AREA SHOWN.
- 5 TOP AND BOTTOM OF RAIL ASSEMBLY MARKED WITH ZONE IDENTIFICATION AS SHOWN.
- 6 TOP OF END BLOCKS AND TIE BLOCK MARKED WITH "ABCD" AT LOCATION SHOWN.
- 7 BOTTOM OF END BLOCKS AND TIE BLOCK MARKED WITH "EFGH" AT LOCATION SHOWN.
- 8 LEFT SIDE RAIL MARKED WITH BUSSING IDENTIFICATION AS SHOWN.
- 9 REF. FLAT HEADED SCREWS MS51959-4.
- 10 REF. PAN HEADED SCREWS MS35206-203.
- 11 EACH APPLICABLE MODULE ASSEMBLY MARKED WITH BUSSING ARRANGEMENT NUMBER IN APPROXIMATE AREA SHOWN.
- 12 REF. FLATHEAD SCREW MS51959-6 2
- 13 LOCK WASHER MS35338-039.
- 14. ROLLS-ROYCE QUALITY SPECIFICATION CQC-103 IS INVOKED FOR THIS PART NUMBER.
- 15 CONTACTS, SEALING PLUGS AND INS/EXT TOOL ARE NOT SUPPLIED, SEE TABLE FOR PART NUMBERS.
- 16 HOUSING MATERIAL: GLASS FILLED EPOXY THERMOSET. COLOR: BLACK ALL MODULES.

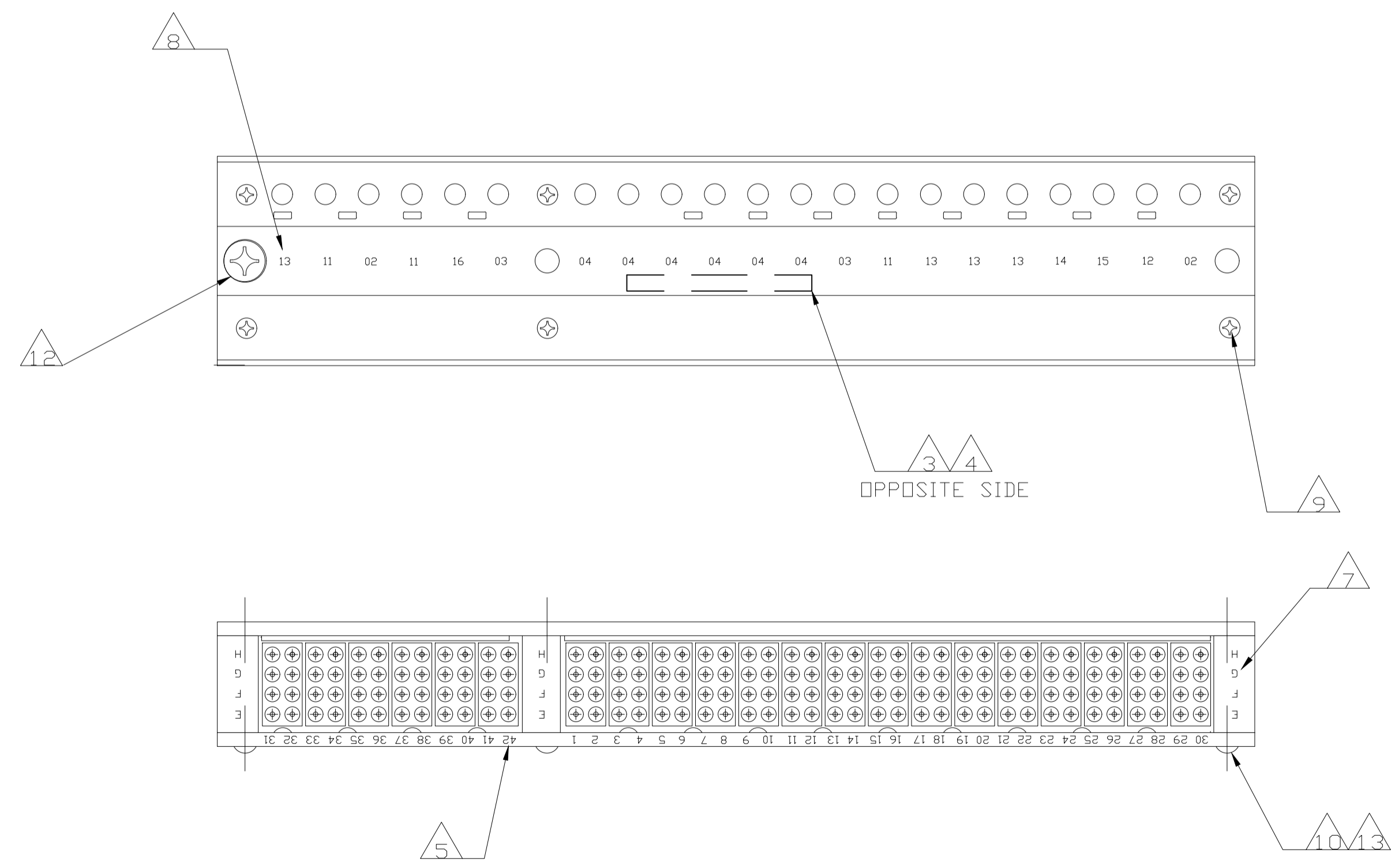


SECTION A - A

RAIL REMOVED FOR CLARITY



BUSSING ARRANGEMENT



RoHS COMPLIANT PART	(13) (11) (02) (11) (16) (03) TIE BLDCK (04) (04) (04) (04) (04) (04) (03) (11) (13) (13) (14) (15) (12) (02)	5-591642-2
SUPERCEDED BY 591642-2	(13) (11) (02) (11) (16) (03) TIE BLDCK (04) (04) (04) (04) (04) (03) (11) (13) (13) (13) (14) (15) (12) (02)	591642-2
REMARKS	BUSSING ARRANGEMENT	PART NO

THIS DRAWING IS A CONTROLLED DOCUMENT.		DWG NO. 19SEP00 C. C. THOMAS		DATE 9-16-00		DRAWN BY D. MILLER		TE Connectivity	
DIMENSIONS: INCHES		TOLERANCES UNLESS OTHERWISE SPECIFIED		APPROVED BY D. MILLER		DATE 9-15-00		NAME	
0 PLC ± .005		1 PLC ± .005		2 PLC ± .005		3 PLC ± .005		4 PLC ± .005	
MATERIAL		FINISH		WEIGHT 0.000000		PART NO. A100779		DRAWING NO. C=591642	
				CUSTOMER DRAWING		SCALE 1:1		SHEET 1 OF 1	

单击下面可查看定价，库存，交付和生命周期等信息

[>>TE Connectivity\(泰科\)](#)