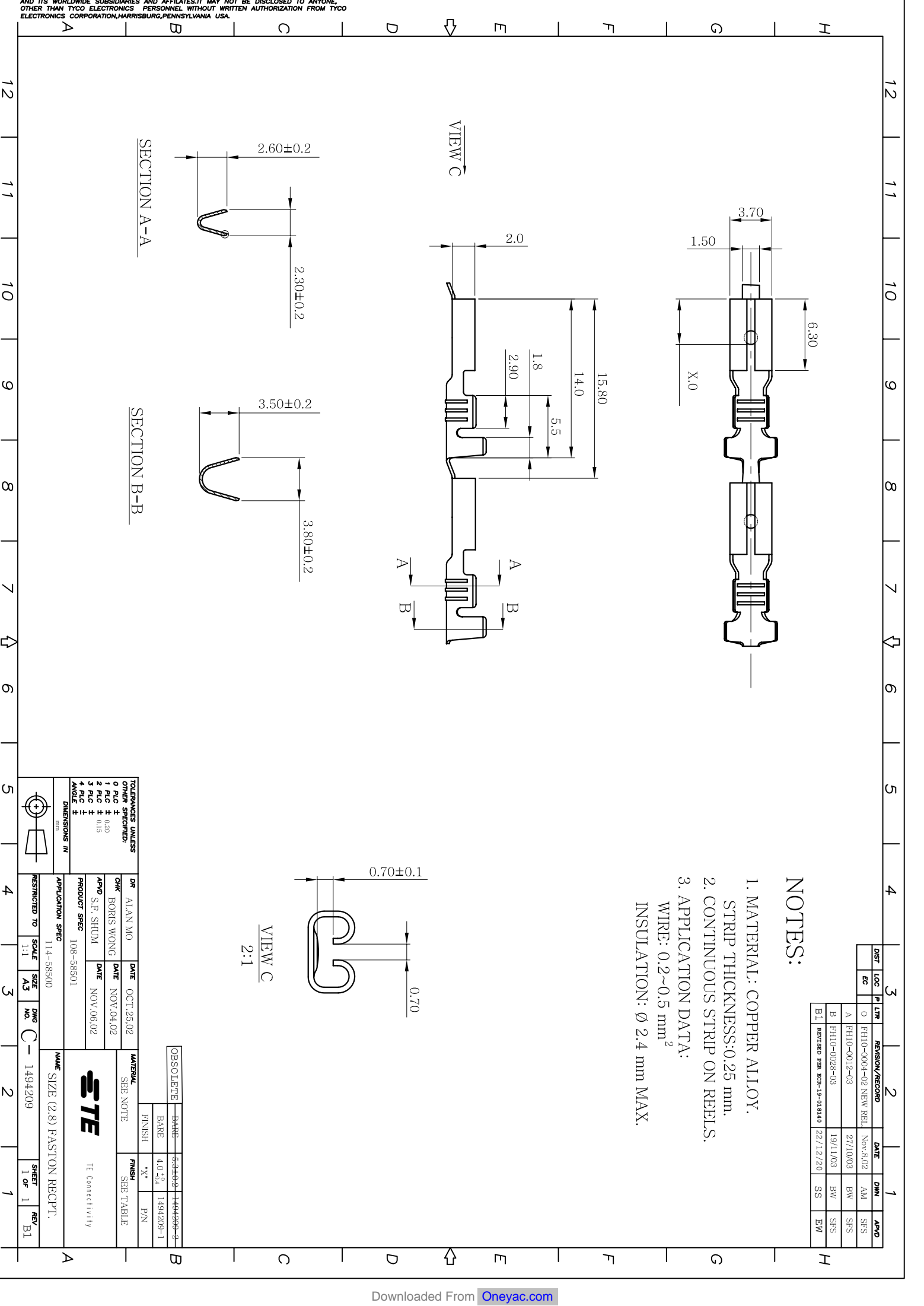


**NOTES:**

1. MATERIAL: COPPER ALLOY.  
STRIP THICKNESS: 0.25 mm.
2. CONTINUOUS STRIP ON REELS.
3. APPLICATION DATA:  
WIRE: 0.2~0.5 mm<sup>2</sup>  
INSULATION: Ø 2.4 mm MAX.

DIST	LOC	PLTR	REVISION/RECORD	DATE	DWG	APPD
0			FH10-0004-02 NEW REL	Nov.8.02	AM	SFS
A			FH10-0012-03	27/10/03	BW	SFS
B			FH10-0028-03	19/11/03	BW	SFS
B1			REVISION PER ECR-19-013140	22/12/20	SS	EW

<b>TOLERANCES UNLESS OTHER SPECIFIED:</b> 0 P.L.C ± 0.20 1 P.L.C ± 0.15 2 P.L.C ± 0.15 3 P.L.C ± 0.15 4 P.L.C ± 0.15 5 ANGLE ± 1°		<b>DR</b> ALAN MO <b>CHK</b> BORIS WONG <b>APP'D</b> S.F. SHUM <b>PRODUCT SPEC</b> 108-58501		<b>DATE</b> OCT.25.02 <b>DATE</b> NOV.04.02 <b>DATE</b> NOV.06.02		<b>MATERIAL</b> SHE NOTE <b>FINISH</b> "X" <b>FINISH</b> P/N	
<b>RESTRICTED TO</b> 1:1 <b>SCALE</b> A3 <b>SIZE</b> A3		<b>APPLICATION SPEC</b> 114-58500		<b>NAME</b> SIZE (2.8) FASTON RECP.T.		<b>SHEET</b> 1 OF 1 <b>REV</b> B1	



单击下面可查看定价，库存，交付和生命周期等信息

[>>TE Connectivity\(泰科\)](#)