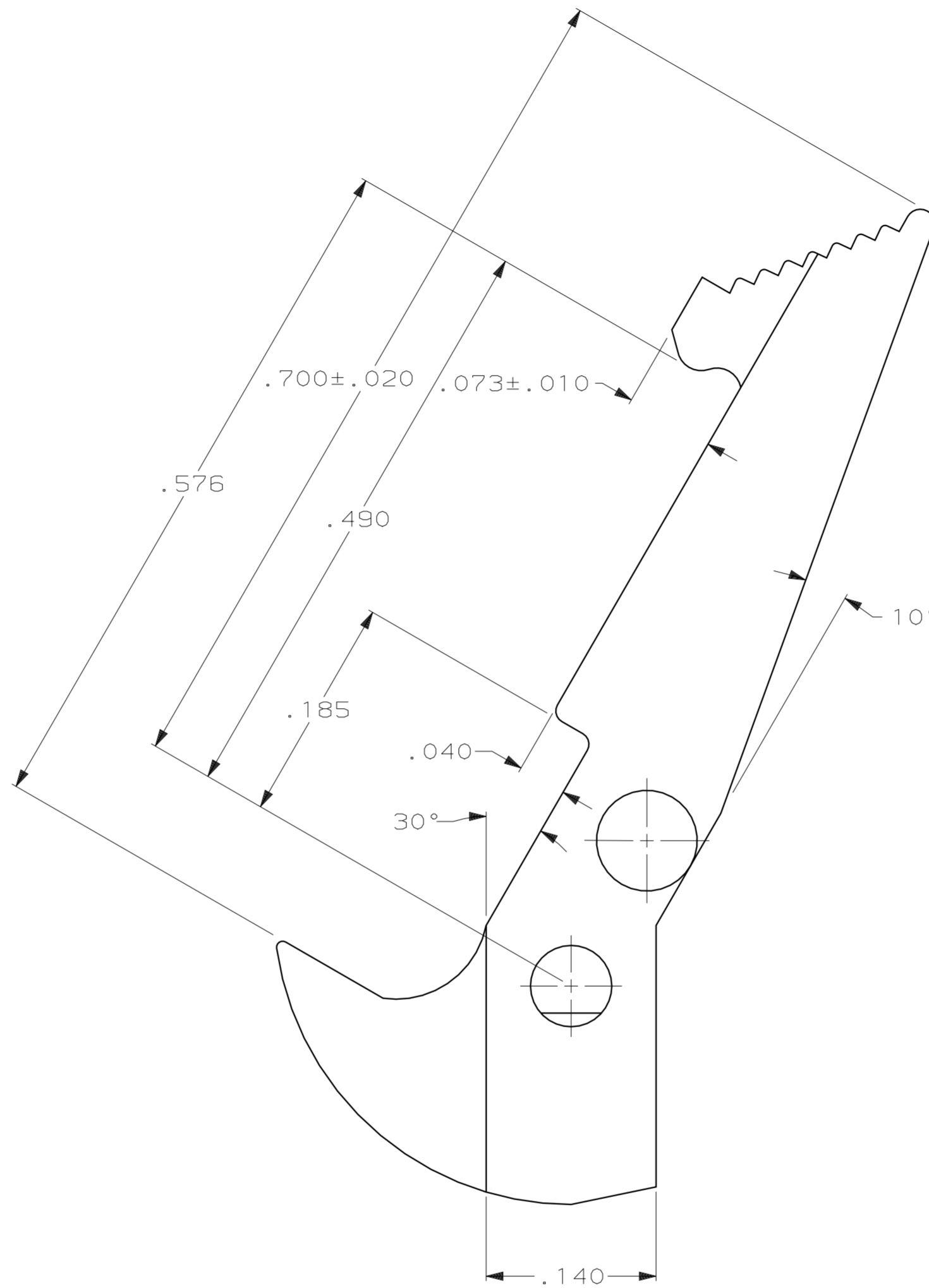
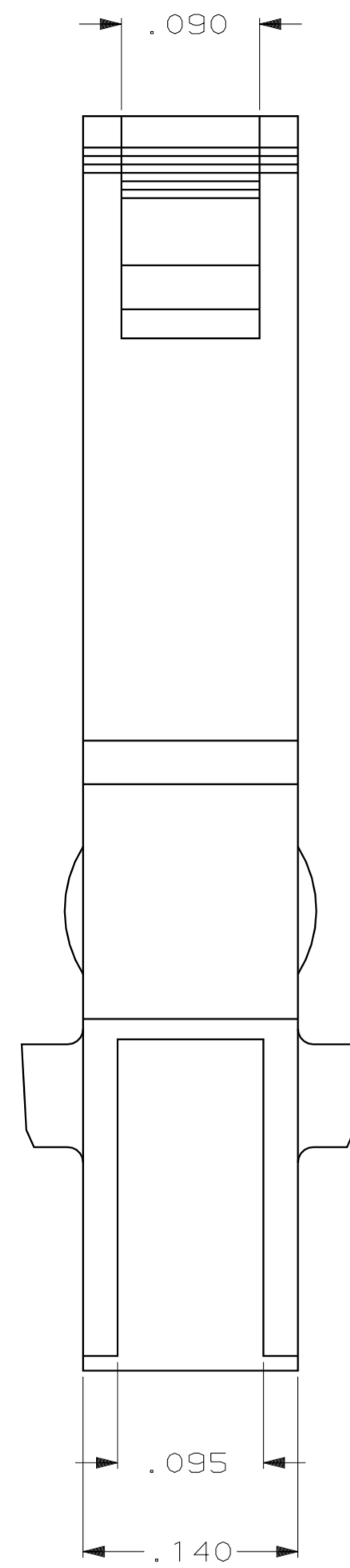


REVISIONS								
LOC	DIST	P	F	ZONE	LTR	DESCRIPTION	DATE	APPD
GP	00					D1 REVISED PER ECO 06-004646	08MAR06	JG



- 1 FLAME RETARDANT PCT, UL94V-0 RATED, COLOR RED.
- 2 FLAME RETARDANT PCT, UL94V-0 RATED, COLOR BLACK.
- 3. TO BE USED WITH AMP-LATCH UNIVERSAL HEADER WHICH MATES WITH AMP-LATCH CONNECTOR WITH STRAIN RELIEF.

2	111338-3
1	111338-1
MATERIAL	PART NO

DO NOT SCALE PRINT. UNLESS SPECIFIED DIMENSIONS IN INCHES. TOLERANCES ON: 2 PLC DEC ± .005 3 PLC DEC ± .005 ANGLES ± 1°		DR 2-16-88 L SIPE	AMP INCORPORATED Harrisburg, Pa. 17105	
SEE TABLE		CHK 2-19-88 S WELDON		
FINISH -		APPD 2-24-88 M E PEIFER	NAME LATCH, UNIVERSAL HEADER, AMP-LATCH	
WEIGHT -		APPD 2-24-88 D HOFFMAN	SIZE D	FSCM NO 00779
		PRODUCT SPEC -	SCALE 10:1	DRAWING NO 111338
		APPLICATION SPEC -	SHEET 1 OF 1	

单击下面可查看定价，库存，交付和生命周期等信息

[>>TE Connectivity\(泰科\)](#)