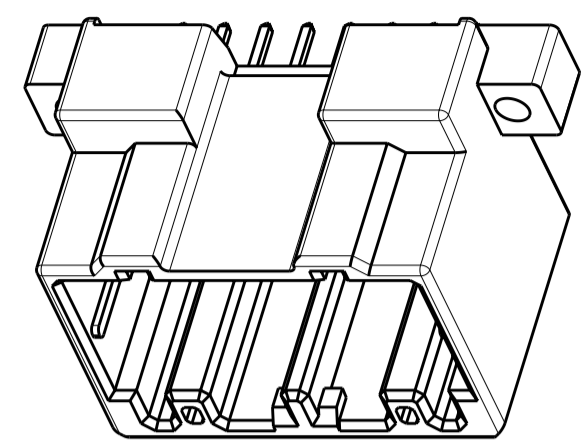
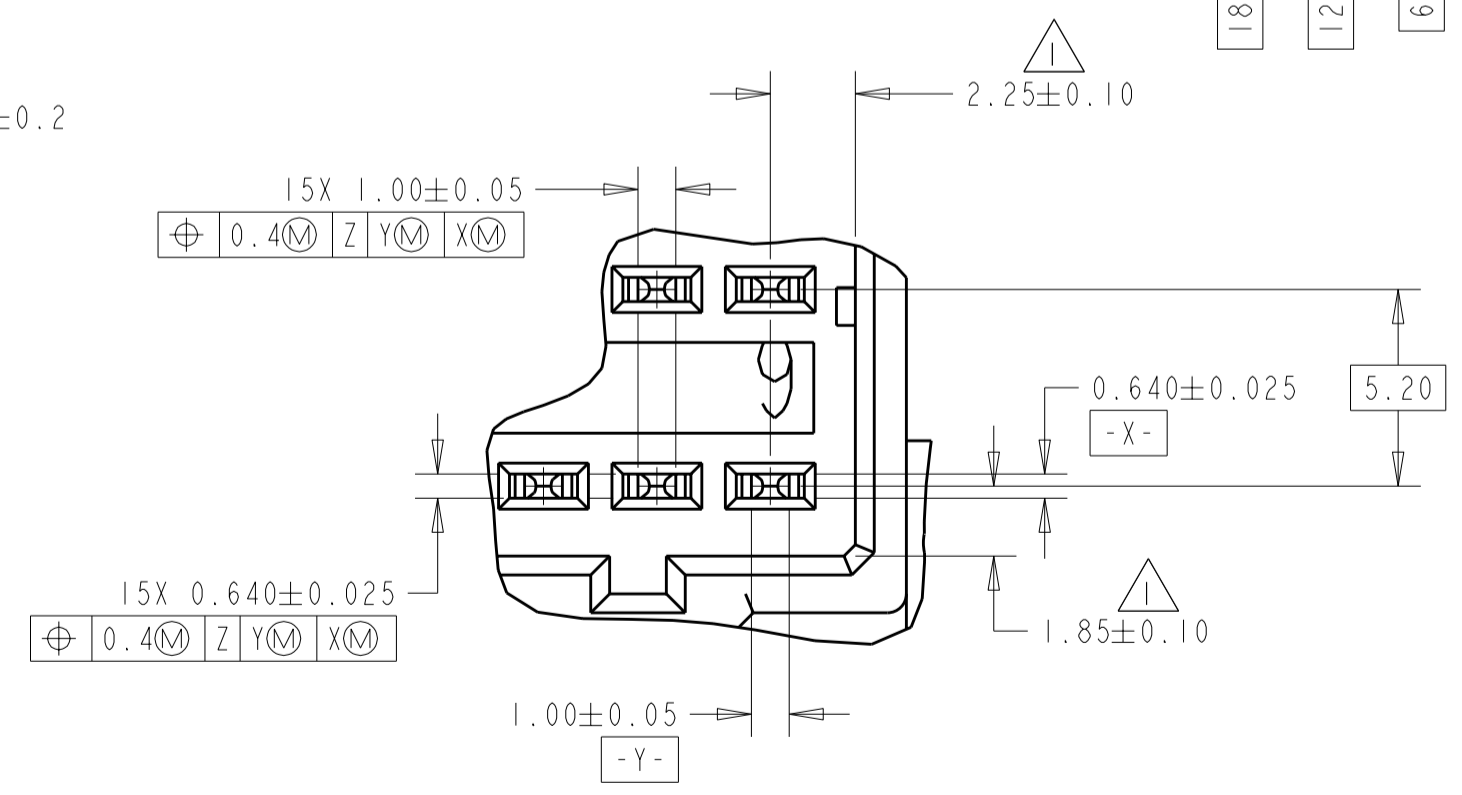
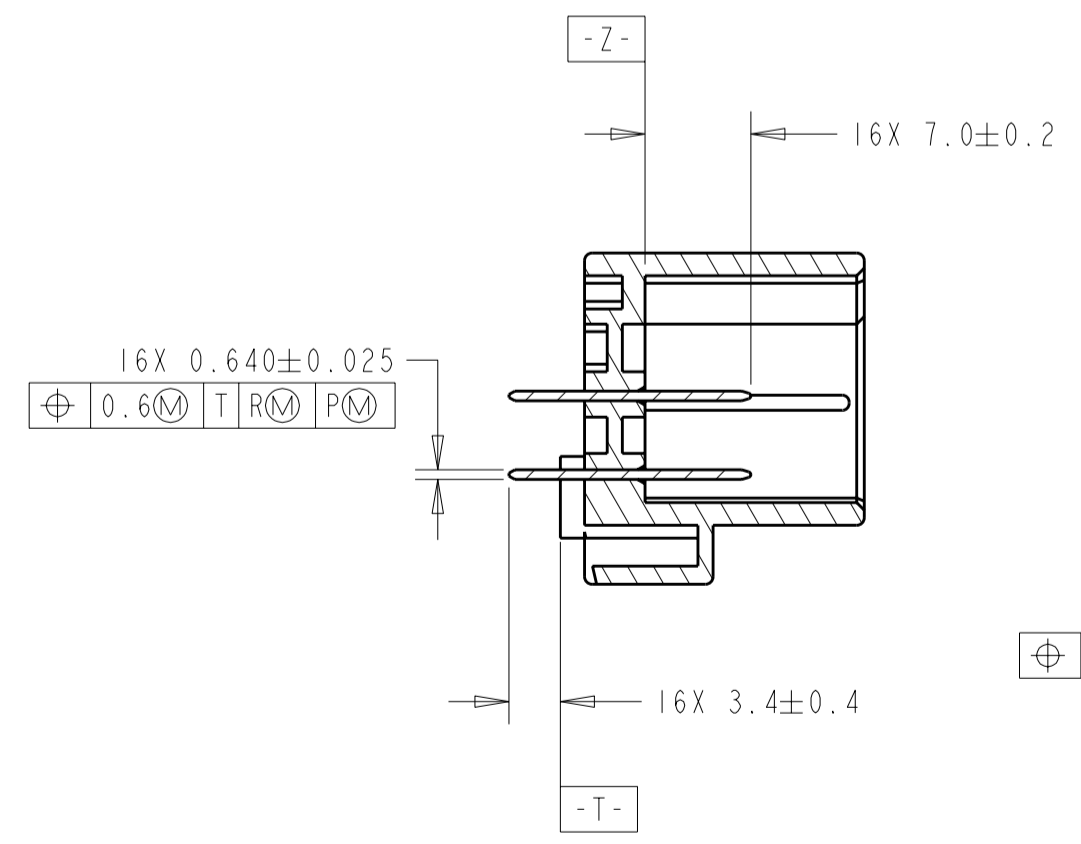
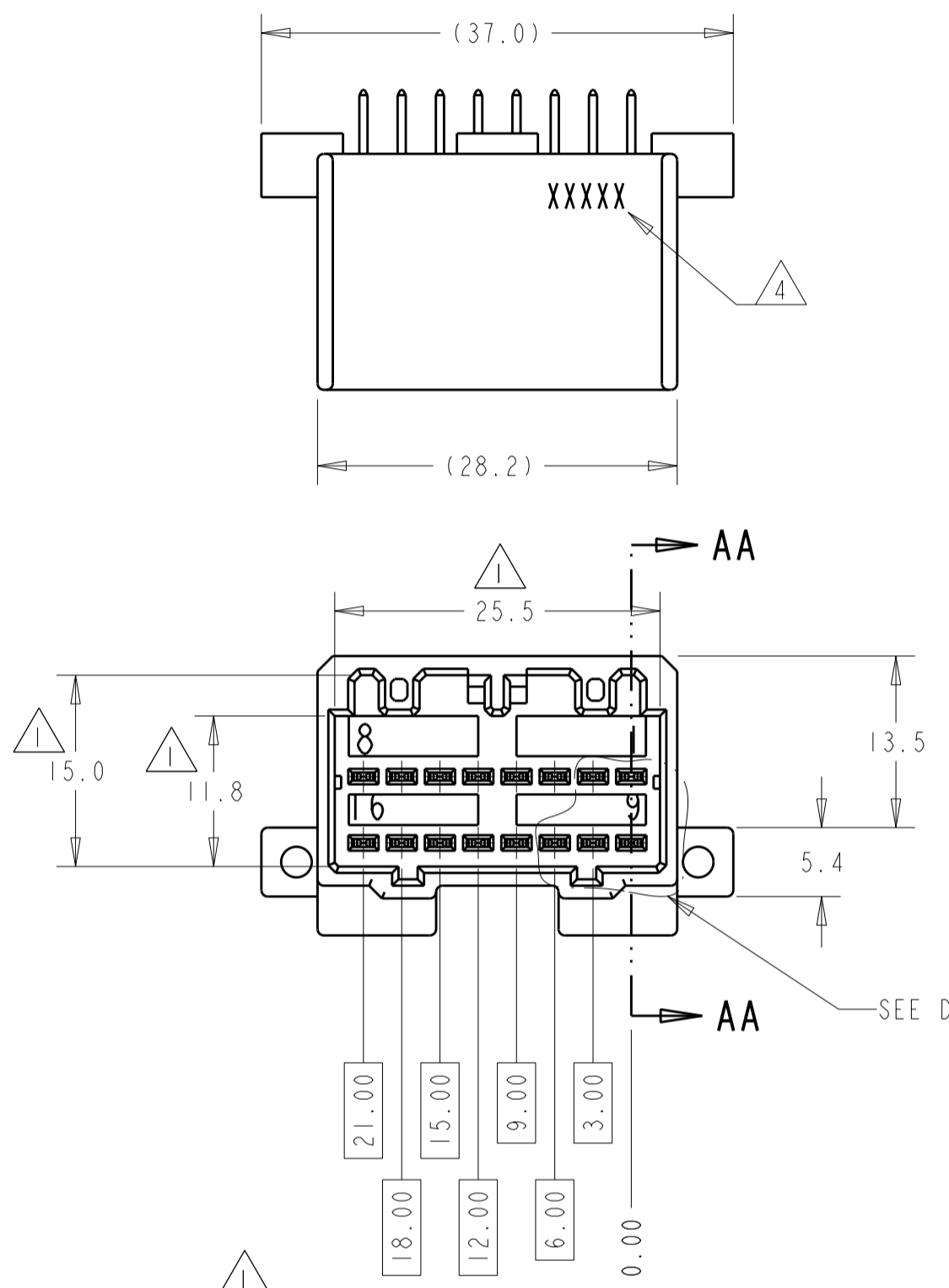
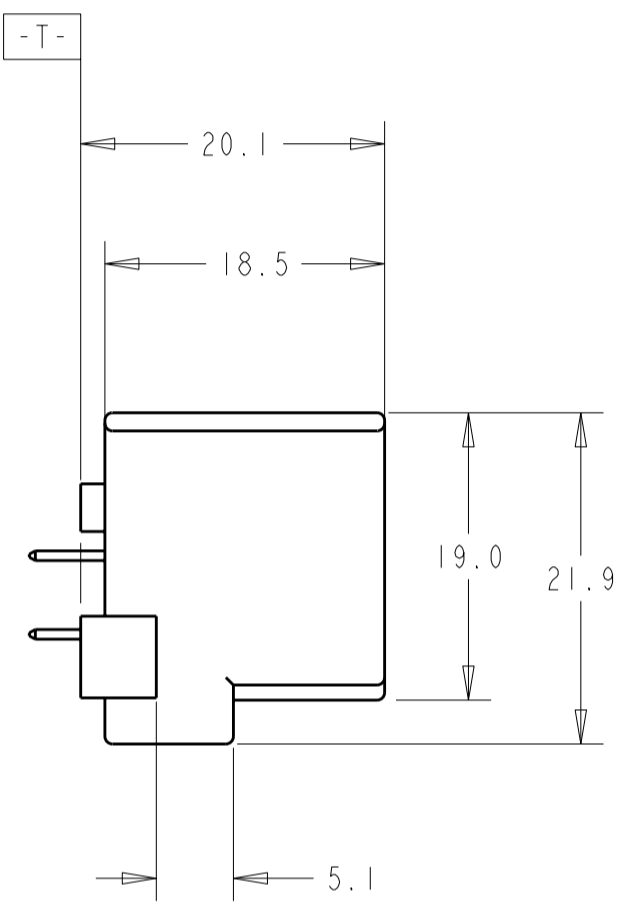
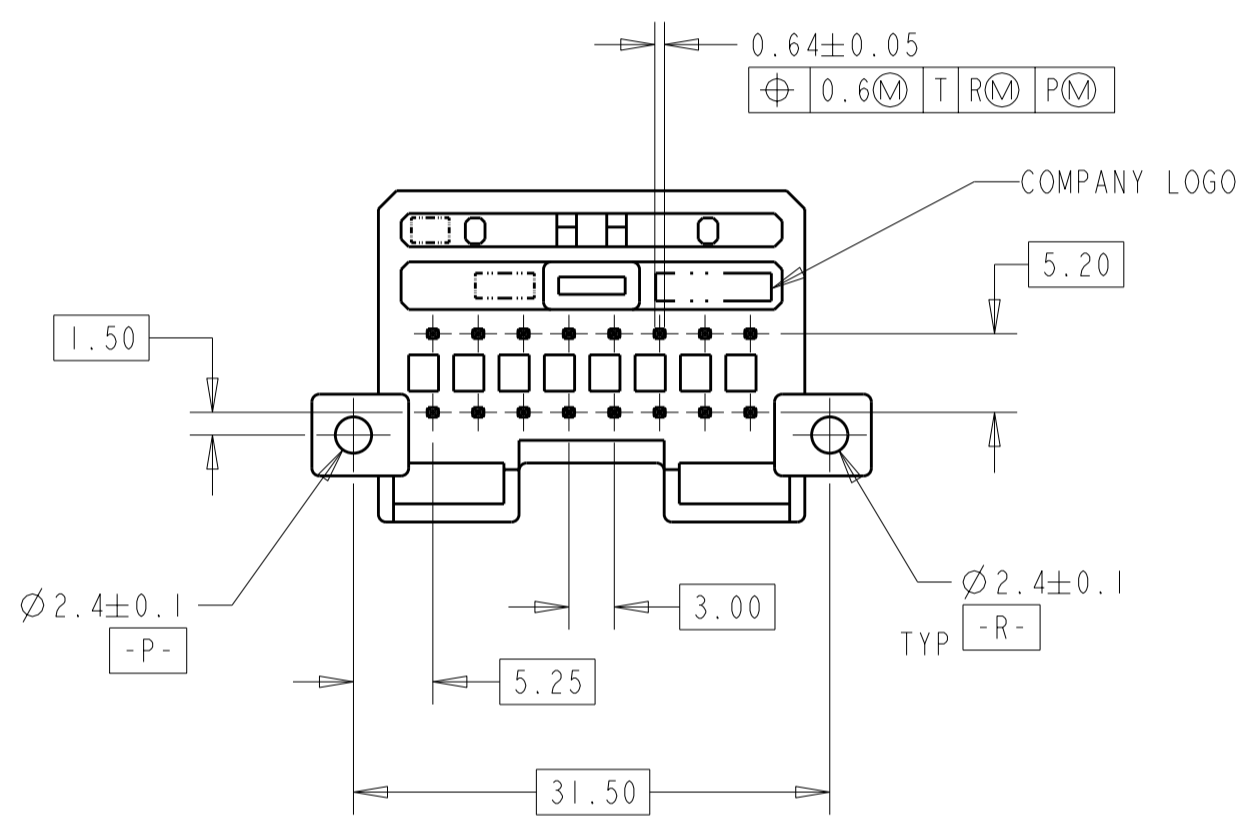


THIS DRAWING IS UNPUBLISHED. RELEASED FOR PUBLICATION 20  
 © COPYRIGHT 20 BY - ALL RIGHTS RESERVED.

LOC	DIST	REVISIONS			
P	LTR	DESCRIPTION	DATE	DWN	APVD
FX	00	A	REVISED PER ECO-12-006499	03APR2012	DLD SSA



- 1 DIMENSION MUST BE HELD BETWEEN **-Z-** AND 2mm FROM **-Z-**.
- 2 DATUMS AND BASIC DIMENSIONS ESTABLISHED BY CUSTOMER.
- 3. THE MATING PLUG PART NUMBER IS 917981.
- 4 DATE CODE
- 5. RECOMMENDED MOUNTING SCREW, 3mm DIA X 6mm LG, PAN HEAD, CLASS 2 TAPPING SCREW AS SPECIFIED IN JIS B1115 AND B1112. TIGHTENING TORQUE 4kg-cm MAX.



DETAIL BB  
 SCALE 5:1

SECTION AA-AA  
 (.040 TABS)

TIN	BRASS	BLACK	PCT-GF30	9-1438424-2
CONTACT FINISH	CONTACT MATERIAL	COLOR	HOUSING MATERIAL	PART NUMBER

THIS DRAWING IS A CONTROLLED DOCUMENT. DIMENSIONING AND TOLERANCING PER ASME Y14.5M-2009		DWN DL DRUMMOND 01DEC03	TE Connectivity	
DIMENSIONS: mm		CHK RM COOPER 01DEC03		
TOLERANCES UNLESS OTHERWISE SPECIFIED:		APVD RM COOPER 01DEC03	NAME CAP ASSEMBLY, HIGH TEMPERATURE, 16 POSITION, 040 VERTICAL HYBRID WITH SCREW HOLES	
0 PLC ±		PRODUCT SPEC 108-5342	SIZE CAGE CODE DRAWING NO RESTRICTED TO	
1 PLC ±0.3		APPLICATION SPEC -	A2 00779 C-1438424	
2 PLC ±0.15		WEIGHT 7.0GR	SCALE 2:1 SHEET 1 OF 2 REV A	
3 PLC ±		CUSTOMER DRAWING		
4 PLC ±				
ANGLES ±°				
FINISH				
MATERIAL SEE TABLE				



单击下面可查看定价，库存，交付和生命周期等信息

[>>TE Connectivity\(泰科\)](#)