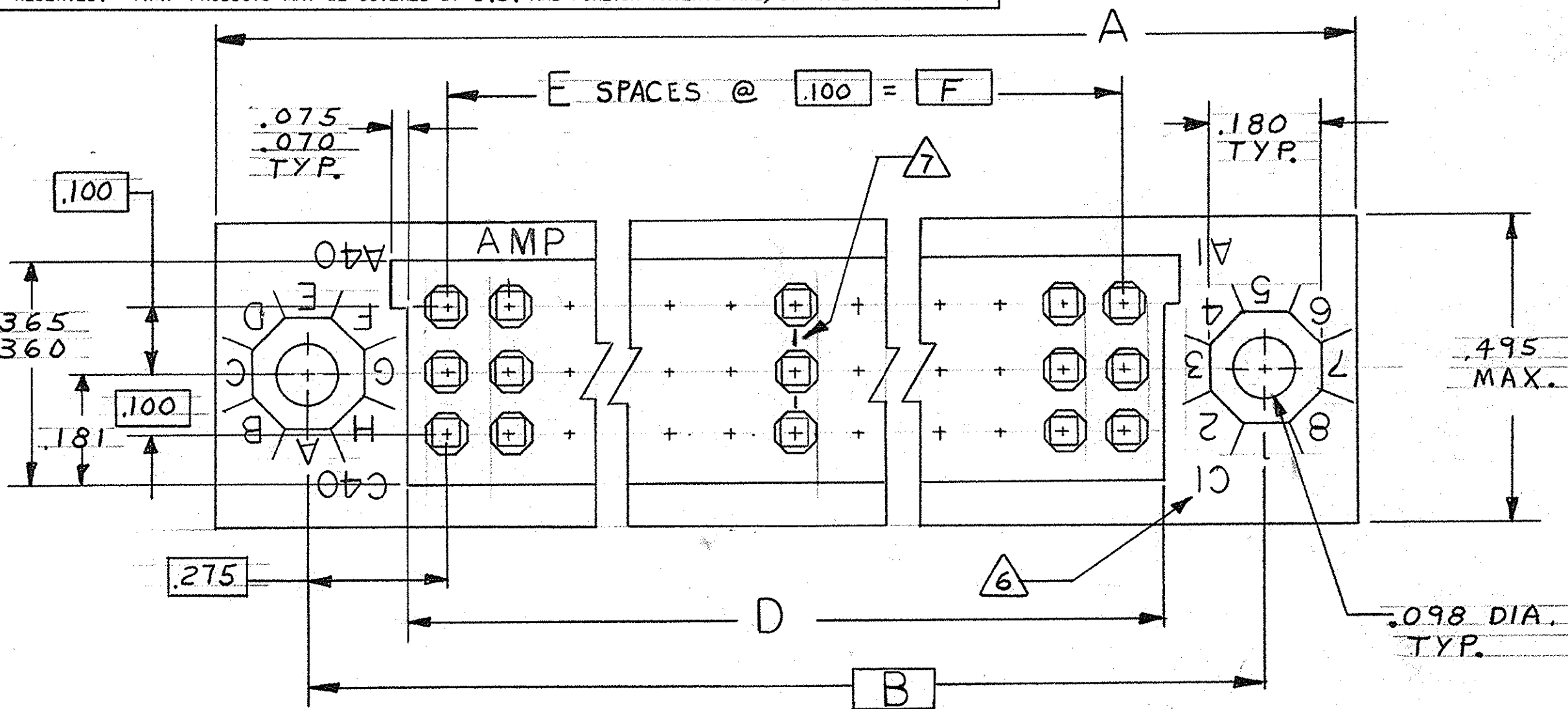


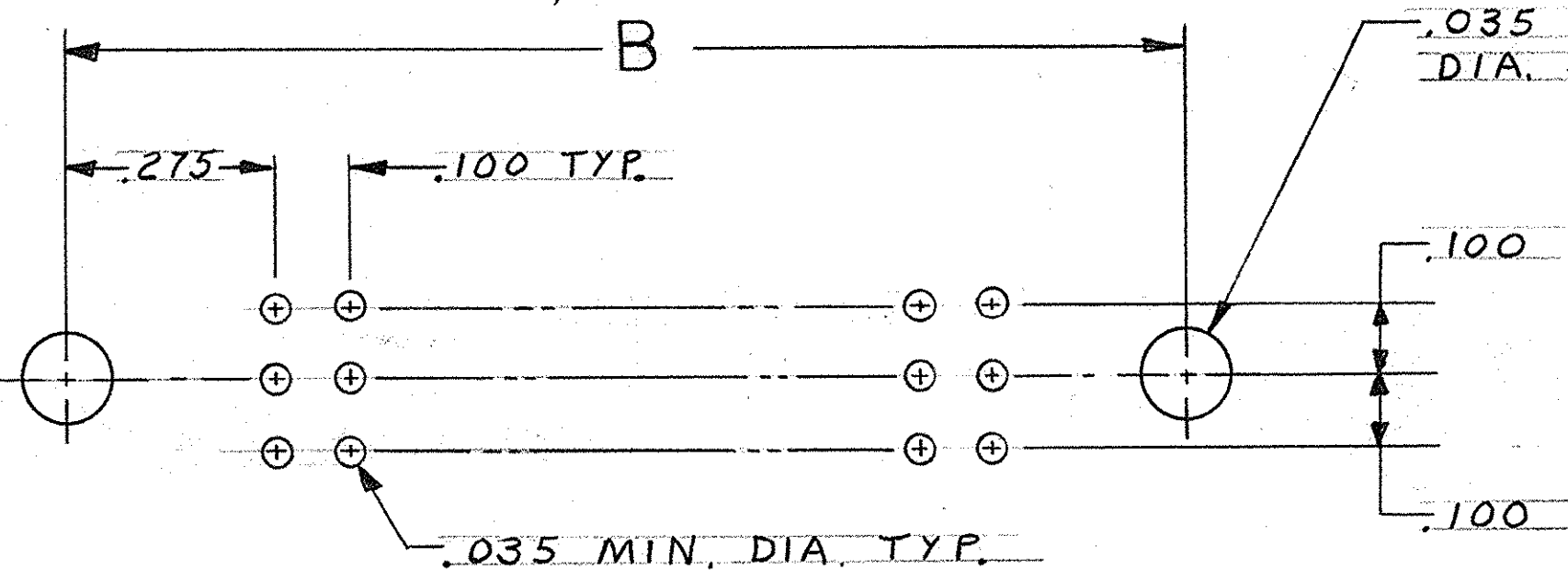
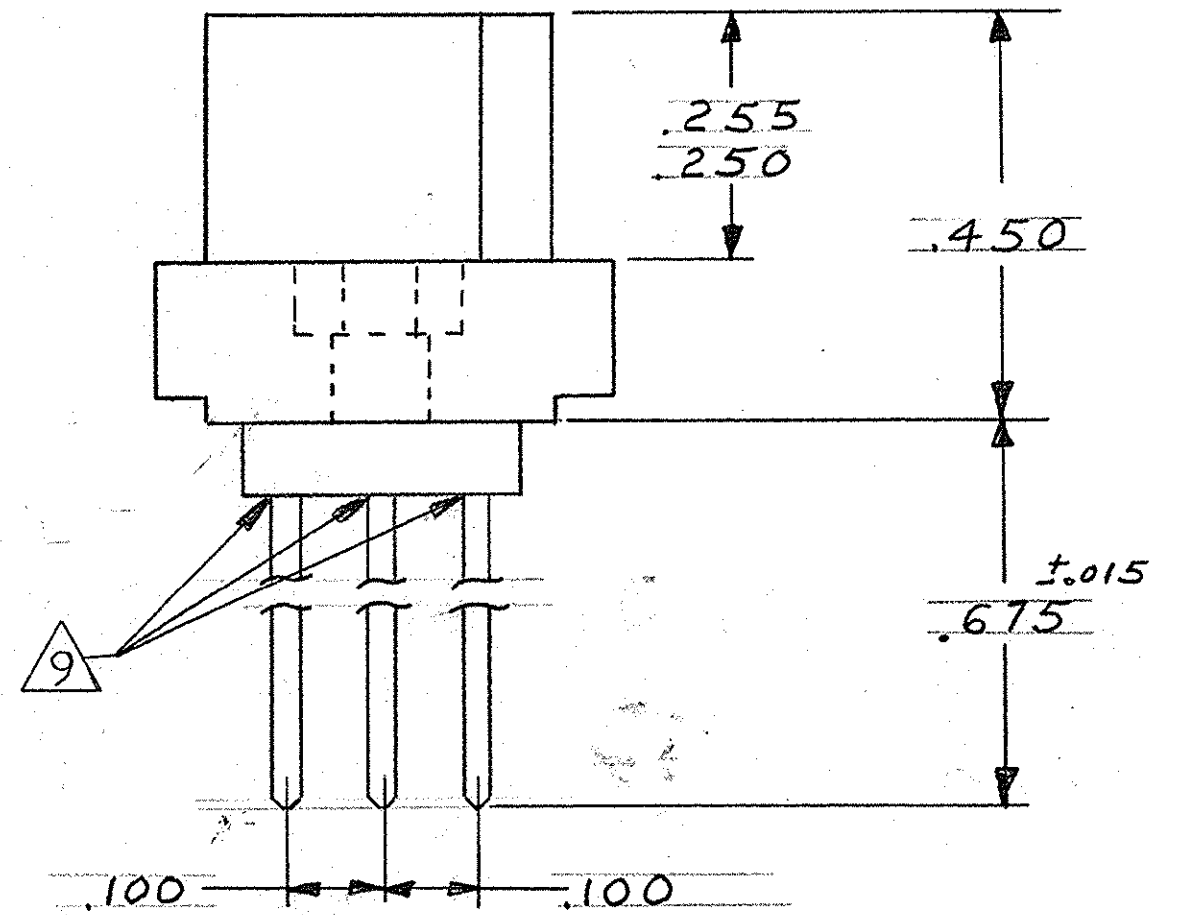
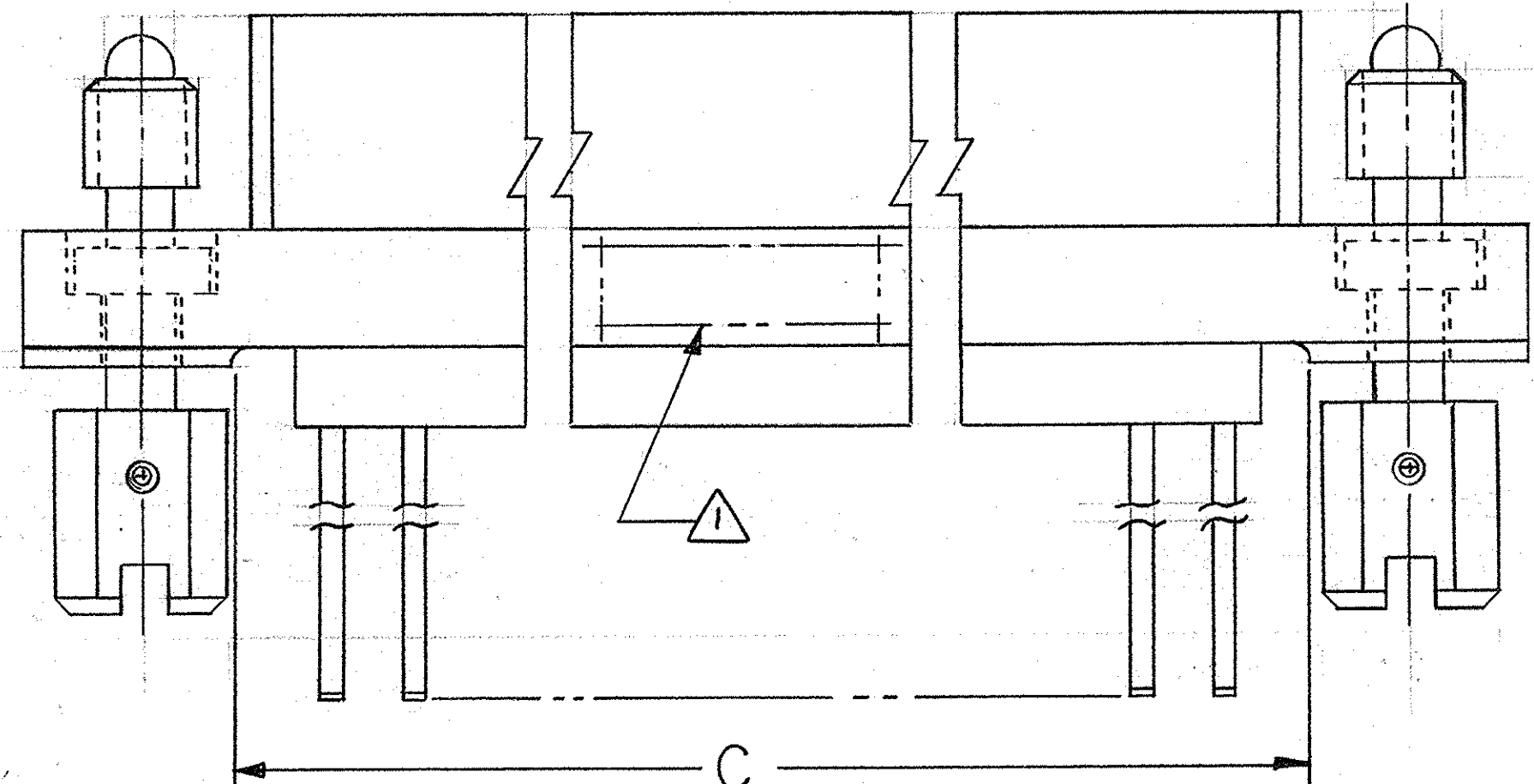
THIS DRAWING IS UNPUBLISHED. RELEASED FOR PUBLICATION, 19
© COPYRIGHT 19 BY AMP INCORPORATED, HARRISBURG, PA. ALL INTERNATIONAL RIGHTS RESERVED. AMP PRODUCTS MAY BE COVERED BY U.S. AND FOREIGN PATENTS AND/OR PATENTS PENDING.

| LTR | DESCRIPTION | DATE | APP |
|-----|-----------------------|-------|-----|
| D | REV PER ECO-05-013297 | 11-05 | PY |

| REVISIONS | | | | | | |
|-----------|---|------|-----|-----------------|------|----------|
| P | F | ZONE | LTR | DESCRIPTION | DATE | APPROVED |
| ✓ | ✓ | | O | RELEASED | m.s. | 12-86 |
| ✓ | ✓ | | A | REV PER DF-2636 | JH | 1-11-79 |
| ✓ | ✓ | | B | REV PER DF-5204 | CT | 8-91 |
| ✓ | ✓ | | C | REV PER DF-6974 | TA | 3/23 |



- 1 AMP, DATE CODE AND PART NUMBER MARKED THIS AREA
- 2 HOUSING: POLYPHENYLENE SULFIDE, GST-40F PER MIL-M-24519.
- 3 CONTACT: BERYLLIUM COPPER OR COPPER-NICKEL-SILICONE
- 4 STABILIZER: IN ACCORDANCE WITH MIL-C-55302.
- 5 FINISH: .000050 GOLD OVER .000030 NICKEL.
- 6 LETTERS INDICATING OUTSIDE ROWS AND NUMBERS INDICATING END CAVITIES MARKED THIS SURFACE.
- 7 LINES INDICATING EVERY FIVE CAVITIES MARKED ON MATING FACE.
- 8 MIL-C-55302 INSPECTION REQUIRED.
- 9 EPOXY ADDED TO AREA WHERE THE CONTACT POSTS EMERGE FROM THE STABILIZER TO ENSURE POST TRUE POSITION.



P.C. BOARD LAYOUT

| | | | | | |
|------------------------------------------------------------------------------------------------------|--|---------------------------------------|--|-------------------------------------------|---------------|
| UNLESS OTHERWISE SPECIFIED DIMENSIONS ARE IN INCHES. TOLERANCES ON: DECIMALS ±.010 ANGLES ± | | CONTRACT NO | | AMP INCORPORATED Harrisburg, Pa. 17105 | |
| MATERIAL | | DR <i>M. Smith</i> 12-22-86 | | NAME RECEPTACLE ASSEMBLY, | |
| FINISH | | CHK <i>E.A. McDougle</i> 12-23-86 | | .100 E, 3-ROW, W/MOUNTING | |
| 2 3 4 | | APPD <i>E.D. McDougle</i> 12-23-86 | | EARS, BOX CONTACT, WIRE | |
| 5 | | APPD <i>D. Smith</i> 11/9/87 | | WRAP POST, W/JACKSCREWS | |
| | | DSGN APPD | | SIZE C | FSCM NO 00779 |
| | | OTHER APPD | | DRAWING NO 534193 | |
| | | | | SCALE 5:1 | SHEET # |

| | | | | | | | |
|-------|----|-------|-------|-------|-------|----------|----------|
| 3.900 | 39 | 4.024 | 4.125 | 4.450 | 4.750 | 120 | 534193-1 |
| F | E | D | C | B | A | No. POS. | PART NO |

534193

单击下面可查看定价，库存，交付和生命周期等信息

[>>TE Connectivity\(泰科\)](#)