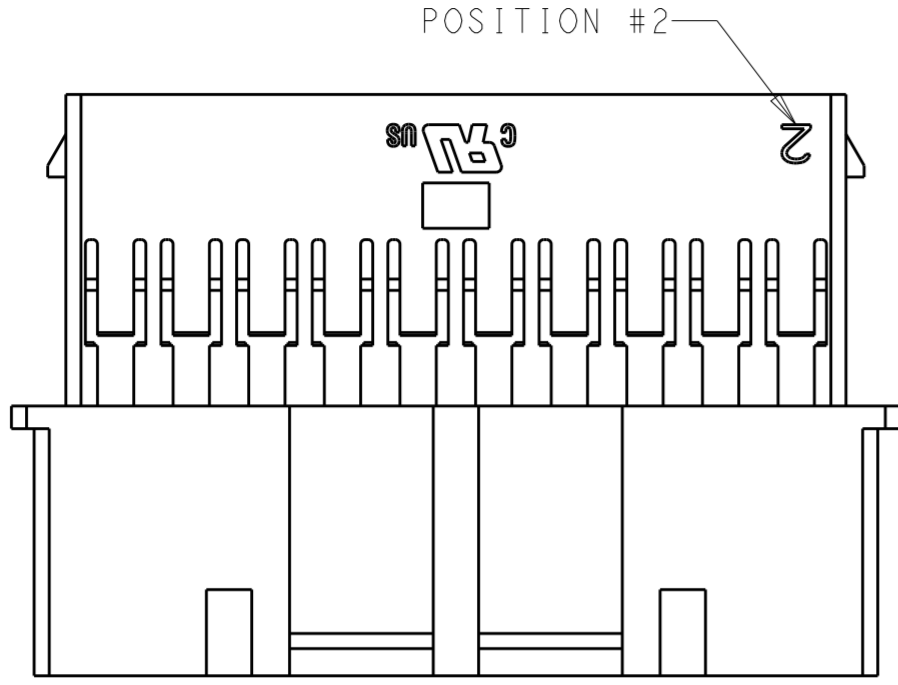
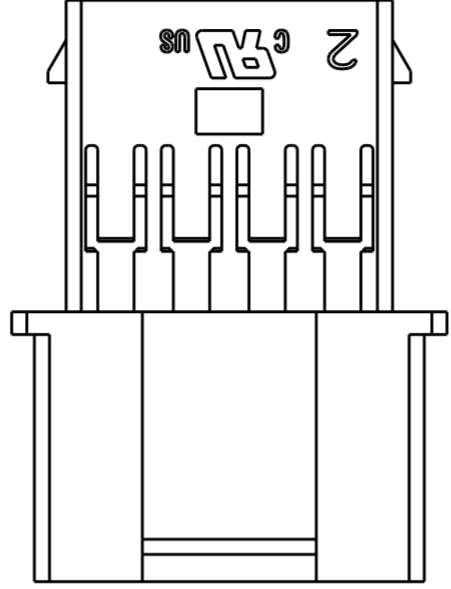


THIS DRAWING IS UNPUBLISHED. RELEASED FOR PUBLICATION 20
 © COPYRIGHT 20 BY - ALL RIGHTS RESERVED.

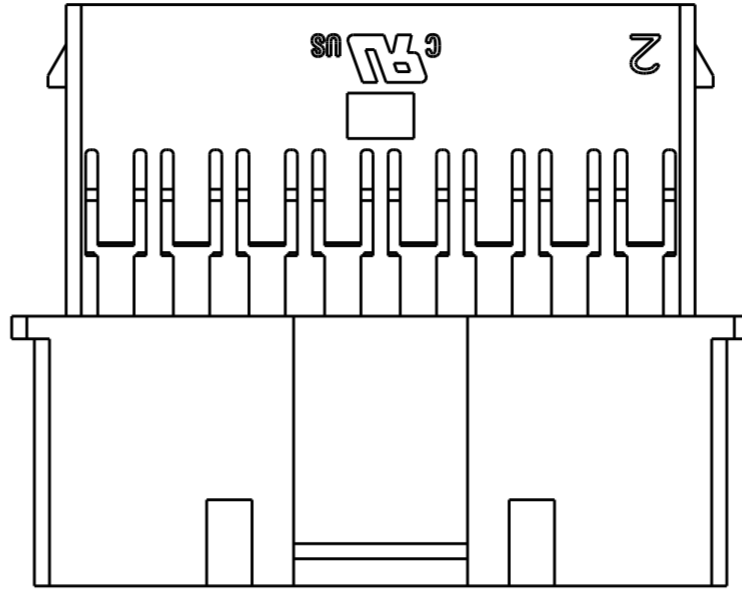
| LOC | | DIST | | REVISIONS | | | |
|-----|-----|-------------|----------------|-----------|------|----|--|
| P | LTR | DESCRIPTION | DATE | DWN | APVD | | |
| - | - | A | FIRST RELEASED | 16AUG2019 | WH | DZ | |



DUAL LATCH DETAIL FOR
1-2324582-8 THROUGH 4-2324582-0



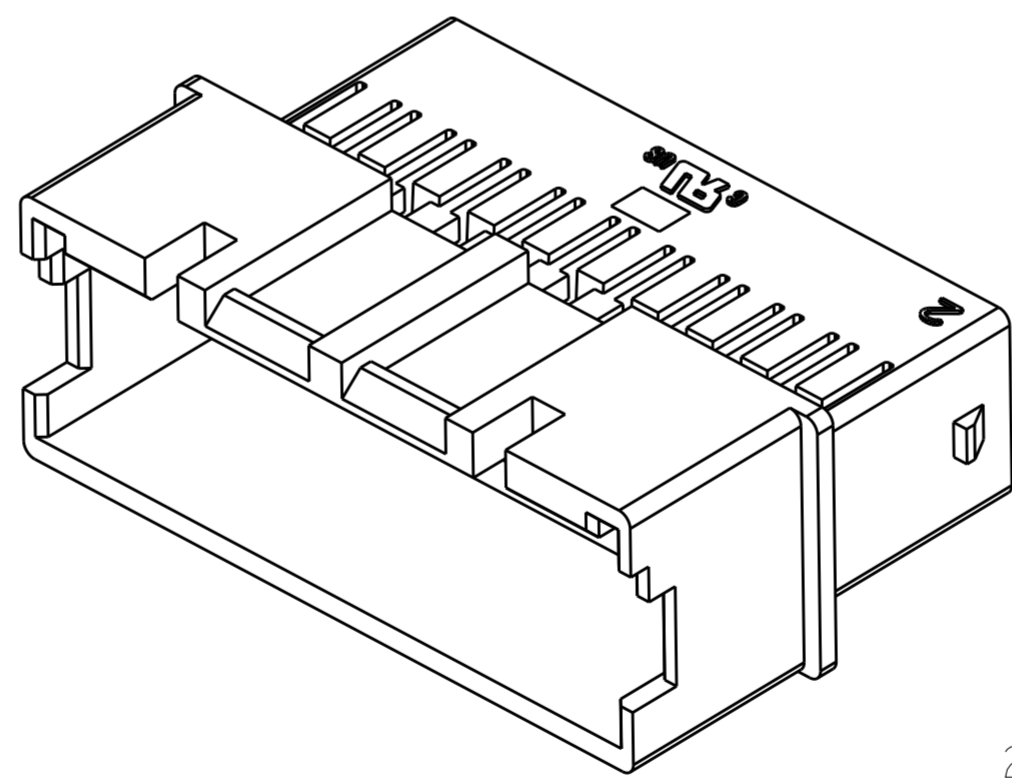
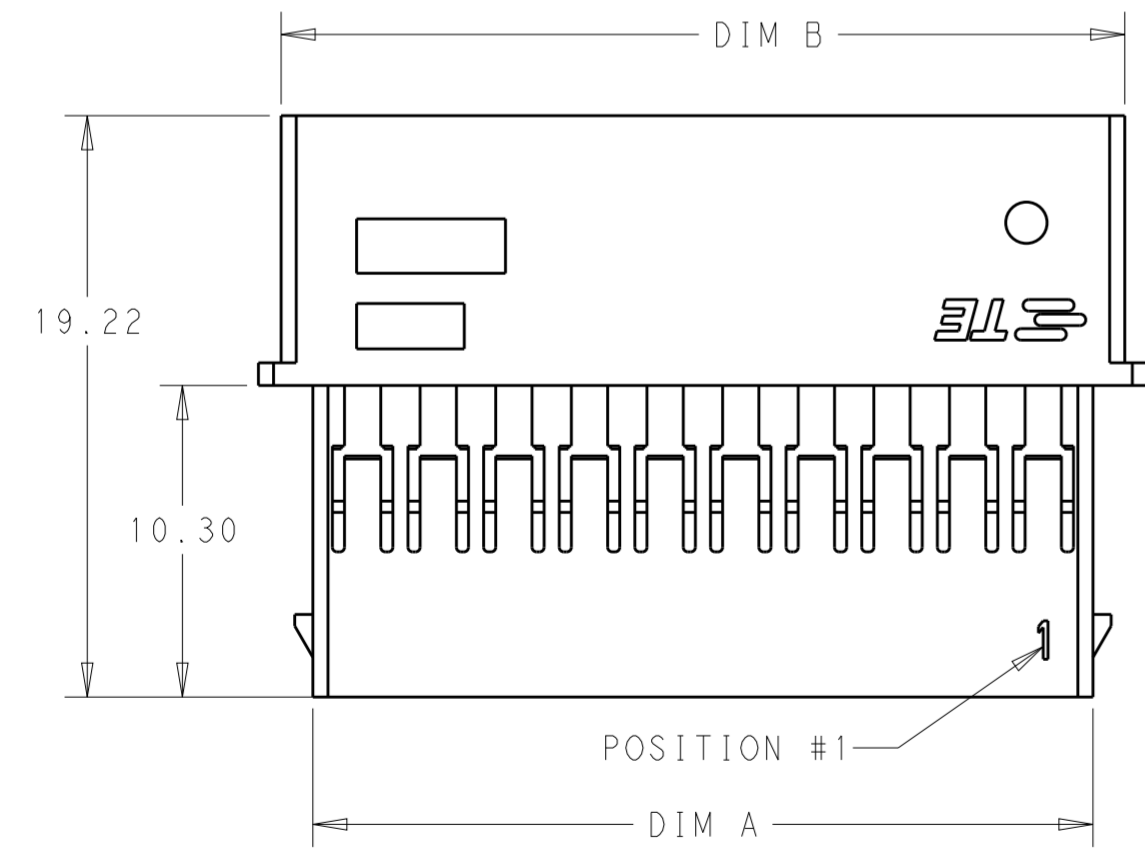
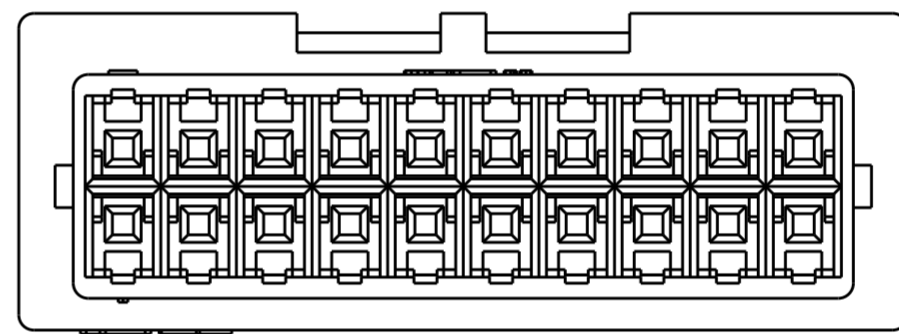
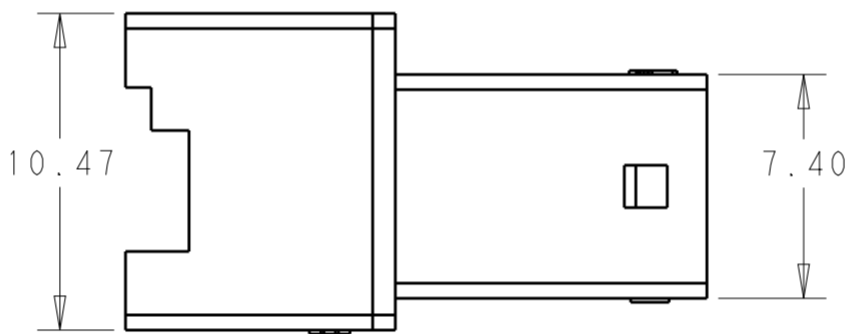
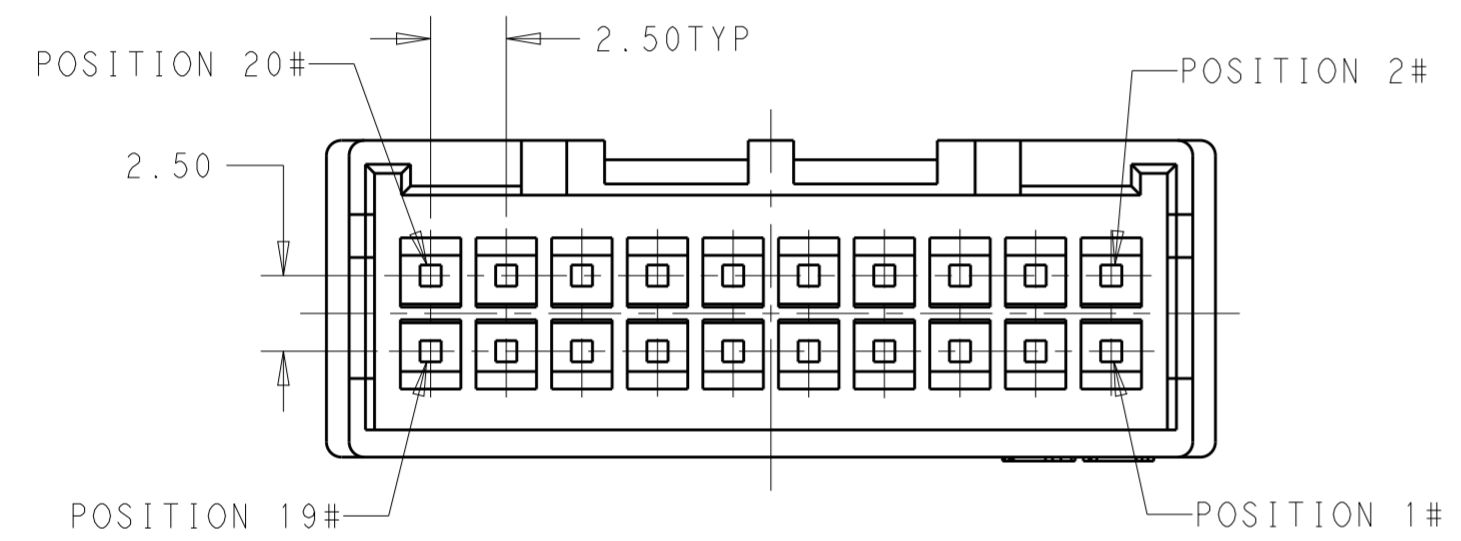
SINGLE LATCH DETAIL FOR
2324582-8 & 1-2324582-0



SINGLE LATCH DETAIL FOR
1-2324582-2 THROUGH 1-2324582-6

NOTES:

- 1. MATERIAL: NYLON 66, UL94-V0, COLOR: NATURAL
- 2. DIMENSIONS SHOWN REPRESENT PRODUCT IN DRY, AS MOLDED, CONDITION. ADDITIONAL 2% GROWTH DUE TO SUBSEQUENT MOISTURE ABSORPTION MAY OCCUR AND SHOULD BE ACCOUNTED FOR.
- 3. RECOMMENDED MATING PLUG: [J]-2324579-[]
- 4. THE HOUSING ACCEPTS TERMINALS: 2238007-1 OR 2238008-1
- 5. ACCEPT OPTIONAL TPA: [J]-1969541-[] OR [J]-2315219-[]



2-2324582-0 SHOWN

| POS | DIM.B | DIM.A | PART NO. |
|-----|-------|-------|-------------|
| 40 | 52.89 | 50.79 | 4-2324582-0 |
| 38 | 50.39 | 48.29 | 3-2324582-8 |
| 36 | 47.89 | 45.79 | 3-2324582-6 |
| 34 | 45.39 | 43.29 | 3-2324582-4 |
| 32 | 42.89 | 40.79 | 3-2324582-2 |
| 30 | 40.39 | 38.29 | 3-2324582-0 |
| 28 | 37.89 | 35.79 | 2-2324582-8 |
| 26 | 35.39 | 33.29 | 2-2324582-6 |
| 24 | 32.89 | 30.79 | 2-2324582-4 |
| 22 | 30.39 | 28.29 | 2-2324582-2 |
| 20 | 27.89 | 25.79 | 2-2324582-0 |
| 18 | 25.39 | 23.29 | 1-2324582-8 |
| 16 | 22.89 | 20.79 | 1-2324582-6 |
| 14 | 20.39 | 18.29 | 1-2324582-4 |
| 12 | 17.89 | 15.79 | 1-2324582-2 |
| 10 | 15.39 | 13.29 | 1-2324582-0 |
| 8 | 12.89 | 10.79 | 2324582-8 |

THIS DRAWING IS A CONTROLLED DOCUMENT.

DWN WARREN HUO 26AUG2018
 CHK DANIEL ZHANG 27AUG2018
 APVD DANIEL ZHANG 27AUG2018

STE TE Connectivity

NAME: CAP HOUSING, EP2.5 DUAL ROW WIRE TO WIRE, FREE HANGING

PRODUCT SPEC: 108-106357
 APPLICATION SPEC: 114-13315

SIZE: A2 CAGE CODE: 00779 DRAWING NO: C-2324582

MATERIAL: NYLON 66, UL94-V0, COLOR: NATURAL

WEIGHT: -

CUSTOMER DRAWING

SCALE: N/A SHEET 1 OF 1 REV A

单击下面可查看定价，库存，交付和生命周期等信息

[>>TE Connectivity\(泰科\)](#)