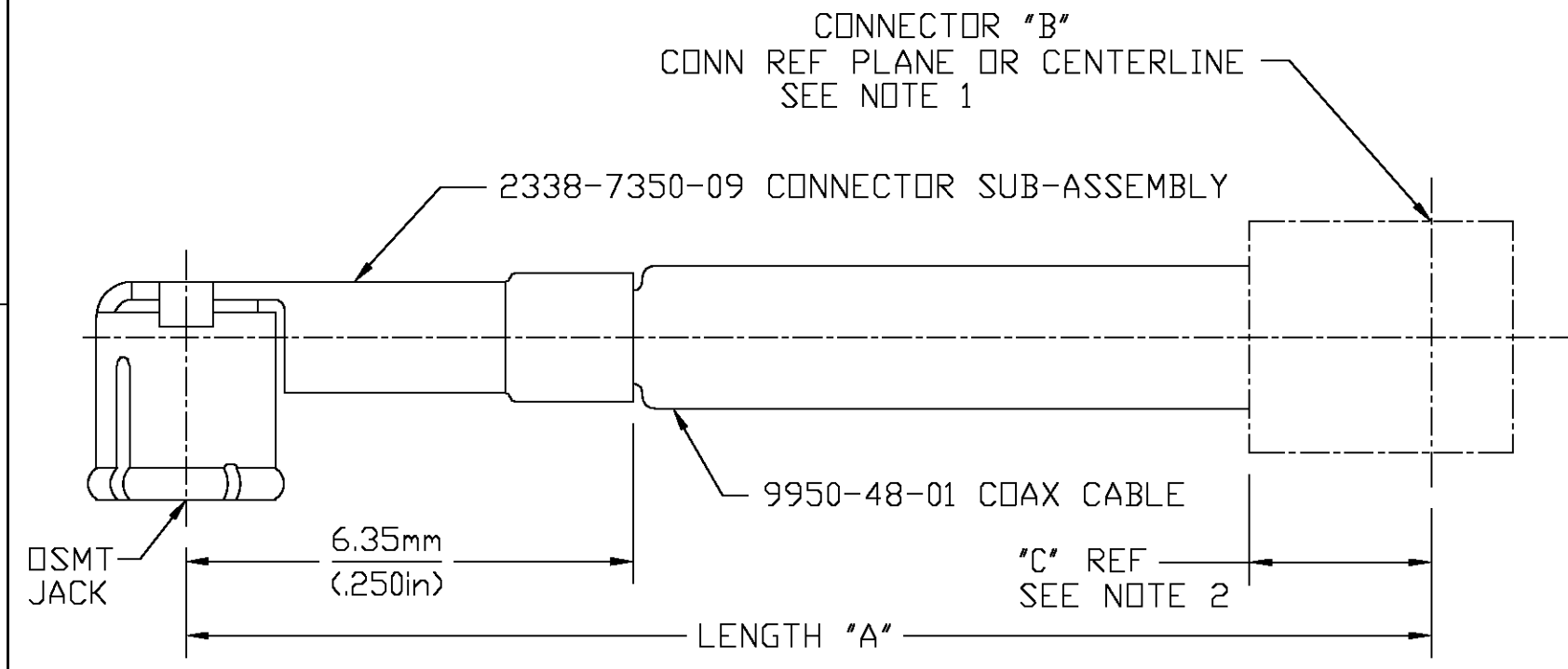


THIS DRAWING IS UNPUBLISHED. RELEASED FOR PUBLICATION
 © COPYRIGHT BY TYCO ELECTRONICS CORPORATION. ALL RIGHTS RESERVED.

LOC	DIST	REVISIONS					
HC	00	P	LTR	DESCRIPTION	DATE	DWN	APVD
		B		REV PER OS14-0353-04	08-12-04	JDP	KW



WHEN ADDING A DASH NUMBER, ADD THE SAME NUMBER TO 9952-4XXX-XX

1. TO PREVENT DAMAGE WHEN ATTACHING CONNECTOR "B" TO SMT CABLE USE MINIMUM SOLDERING HEAT/ SHRINKING HEAT.
2. REFERENCE DIMENSION "C" REPRESENTS LENGTH FROM REFERENCE PLANE OR CENTERLINE TO CABLE EXIT POINT (VISIBLE CABLE).
3. MATERIALS AND ELECTRICAL PERFORMANCE SHOWN FOR SMT CONNECTOR AND CABLE ONLY. FOR CABLE ASSEMBLY DATA CONSULT FACTORY.

LENGTH "A" TOLERANCES:

LENGTH "A"	TOLERANCE
UP TO 100	± 3
101 TO 500	± 5
OVER 500	± 10

OUTER CONTACT	BERYLLIUM COPPER	GOLD PLATE
CENTER CONTACT	BERYLLIUM COPPER	GOLD PLATE
DIELECTRIC	POLYPROPYLENE, GF	N/A
CABLE JACKET	POLYVINYLCHLORIDE	N/A
SHIELD	TINNED COPPER WIRE, 38 AWG	N/A
DIELECTRIC	FLUORINATED ETHYLENE PROPYLENE (FEP)	N/A
CENTER CONDUCTOR	TINNED COPPER CLAD STEEL	N/A
COMPONENT	MATERIAL	FINISH

ELECTRICAL

Frequency DC - 6 GHz
 Nominal Impedance 50 ohms
 Voltage Rating 250 Volts (VRMS Max.) @ Sea Level
 VSWR 1.20:1 Max. @ 2GHz
 1.40:1 Max. @ 6GHz
 Insulation Resistance 1000 Megohms Minimum
 Dielectric Withstanding Voltage 500 Volts (VRMS Minimum) @ Sea Level

MECHANICAL

Connector Durability 100 mating cycles

ENVIRONMENTAL

TEMPERATURE RATING -40°C(-40°F) TO +105°C(221°F)


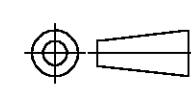
THIS DRAWING IS A CONTROLLED DOCUMENT.		DWN B.B. 08/10/92	Tyco Electronics Corporation Harrisberg, PA 17105-3608	
DIMENSIONS: INCHES		CHK -		
TOLERANCES UNLESS OTHERWISE SPECIFIED:		APVD P.R. 08/14/92	NAME OSMT RIGHT ANGLE JACK INTERSERIES CABLE ASSY (9950-4200-01)	
DEC. ±.005		PRODUCT SPEC -	SIZE A3 CAGE CODE 00779 DRAWING NO. C-1064391-1 RESTRICTED TO -	
ANGLES ±1°		APPLICATION SPEC -	SCALE 10:1 SHEET 1 OF 2 REV B	
MATERIAL -		WEIGHT -	CUSTOMER DRAWING	

THIS DRAWING IS UNPUBLISHED. VERTRAULICHE UNVEROFFENTLICHTE ZEICHNUNG
 RELEASED FOR PUBLICATION FREI FUER VEROFFENTLICHUNG
 © COPYRIGHT BY TYCO ELECTRONICS CORPORATION. ALL RIGHTS RESERVED. ALLE RECHTE VORBEHALTEN

LOC	DIST	REVISIONS ÄNDERUNGEN					
HC	00	P	LTR	DESCRIPTION BESCHREIBUNG	DATE	DWN	APVD
			-	SEE SHEET 1 FOR REV.	-	-	-

9950-4215-XX	215	9950-4915-XX	915
9950-4210-XX	210	9950-4800-XX	800
9950-4205-XX	205	9950-4610-XX	610
9950-4200-XX	200	9950-4535-XX	535
9950-4195-XX	195	9950-4520-XX	520
9950-4190-XX	190	9950-4510-XX	510
9950-4185-XX	185	9950-4500-XX	500
9950-4180-XX	180	9950-4480-XX	480
9950-4175-XX	175	9950-4460-XX	460
9950-4170-XX	170	9950-4440-XX	440
9950-4165-XX	165	9950-4420-XX	420
9950-4160-XX	160	9950-4405-XX	405
9950-4155-XX	155	9950-4400-XX	400
9950-4150-XX	150	9950-4380-XX	380
9950-4145-XX	145	9950-4360-XX	360
9950-4140-XX	140	9950-4350-XX	350
9950-4135-XX	135	9950-4340-XX	340
9950-4130-XX	130	9950-4320-XX	320
9950-4125-XX	125	9950-4305-XX	305
9950-4120-XX	120	9950-4300-XX	300
9950-4115-XX	115	9950-4295-XX	295
9950-4110-XX	110	9950-4290-XX	290
9950-4105-XX	105	9950-4285-XX	285
9950-4100-XX	100	9950-4280-XX	280
9950-4095-XX	95	9950-4275-XX	275
9950-4090-XX	90	9950-4270-XX	270
9950-4085-XX	85	9950-4265-XX	265
9950-4080-XX	80	9950-4260-XX	260
9950-4075-XX	75	9950-4255-XX	255
9950-4070-XX	70	9950-4250-XX	250
9950-4065-XX	65	9950-4245-XX	245
9950-4060-XX	60	9950-4240-XX	240
9950-4055-XX	55	9950-4235-XX	235
9950-4050-XX	50	9950-4230-XX	230
9950-4040-XX	40	9950-4225-XX	225
9950-4034-XX	34	9950-4220-XX	220
M/A-COM P/N	LENGTH "A"(mm)	M/A-COM P/N	LENGTH "A"(mm)

FINAL DASH#	CONN "B" P/N	CONN "B" TYPE	DIM."C" REF
01	2031-5102-23	SMA STR PLUG	35 (1.38)
02	2032-5026-23	SMA STR JACK	35 (1.38)
03	2834-7350-02	SMA BLKD JACK	35 (1.38)
04	2036-5016-23	SMA FLANGE JACK	35 (1.38)
05	5102-5005-23	SMB STR JACK	15 (0.59)
06	5132-5003-23	SMB STR JACK	25 (0.98)
07	5101-5016-23	SMB STR PLUG	15 (0.59)
08	5131-5021-09	SMB STR PLUG	25 (0.98)
09	5104-5011-09	SMB BLKD JACK	15 (0.59)
10	5134-7196-23	SMB BLKD JACK	25 (0.98)
11	5001-5027-23	SMC STR PLUG	10 (0.39)
12	5031-5007-23	SMC STR PLUG	20 (0.79)
13	5004-5012-23	SMC BLKD JACK	20 (0.79)
14	5034-5005-23	SMC BLKD JACK	30 (1.18)
15	5831-5009-10	DSX STR PLUG	15 (0.59)
16	5837-5002-23	DSX RT ANG PLUG	10 (0.39)
17	B35A09J460X	BNC STR PLUG	29 (1.13)
18	T35A41J460XCP	TNC STR PLUG	29 (1.13)
19	T35H04J460X99	TNC BLKD JACK	38 (1.51)
20	2034-7350-02	SMA BLKD JACK	TBD
21	2831-7350-02	SMA STR PLUG	19 (0.76)
22	2837-7350-02	SMA RT ANG PLUG	TBD
23	2037-5100-23	SMA RT ANG PLUG	12 (0.47)
24	9034-5002-10	STR PLUG	12 (0.47)
25	5134-5010-23	SMB BLKD JACK	14 (0.55)
26	1037-7196-23	DSSM RT ANG PLUG	10 (0.40)
27	5137-5011-23	SMB RT ANG PLUG	12 (0.50)
28	B35H04J460X99	BNC BLKD JACK	38 (1.51)
29	2034-5145-02	SMA POLAR BULK JACK	21 (0.84)
30	2036-5054-02	SMA FLANGE JACK	21 (0.84)

THIS DRAWING IS A CONTROLLED DOCUMENT. DIESE ZEICHNUNG IST EIN KONTROLLIERTES DOKUMENT.		DWN B.B. 08/10/92	 Tyco Electronics Corporation Harrisberg, PA 17105-3608	
DIMENSIONS: MASSE/NEIEN: INCHES		CHK D. CAMELIO 08/18/92	NAME	
TOLERANCES UNLESS OTHERWISE SPECIFIED: ALLGEMEINTOLERANZEN DEC. ±.005		APVD -	OSMT RIGHT ANGLE JACK INTERSERIES CABLE ASSY (9950-4XXX-XX)	
		PRODUCT SPEC PRODUKTSPEZ.	SIZE	CAGE CODE
MATERIAL		APPLICATION SPEC VERARBEITUNGSSPEZ.	A3	00779
ANGLES /WINKEL ±1°		WEIGHT GEWICHT	DRAWING NO ZEICHNUNGS-NR. C-1064391-1	
FINISH/OBERFLAECHE/FARBE		RESTRICTED TO NUR FUER		SCALE MASSTAB 0:1
CUSTOMER DRAWING/KUNDENZEICHNUNG			SHEET BLATT 2 OF VON 2	REV B

单击下面可查看定价，库存，交付和生命周期等信息

[>>TE Connectivity\(泰科\)](#)