

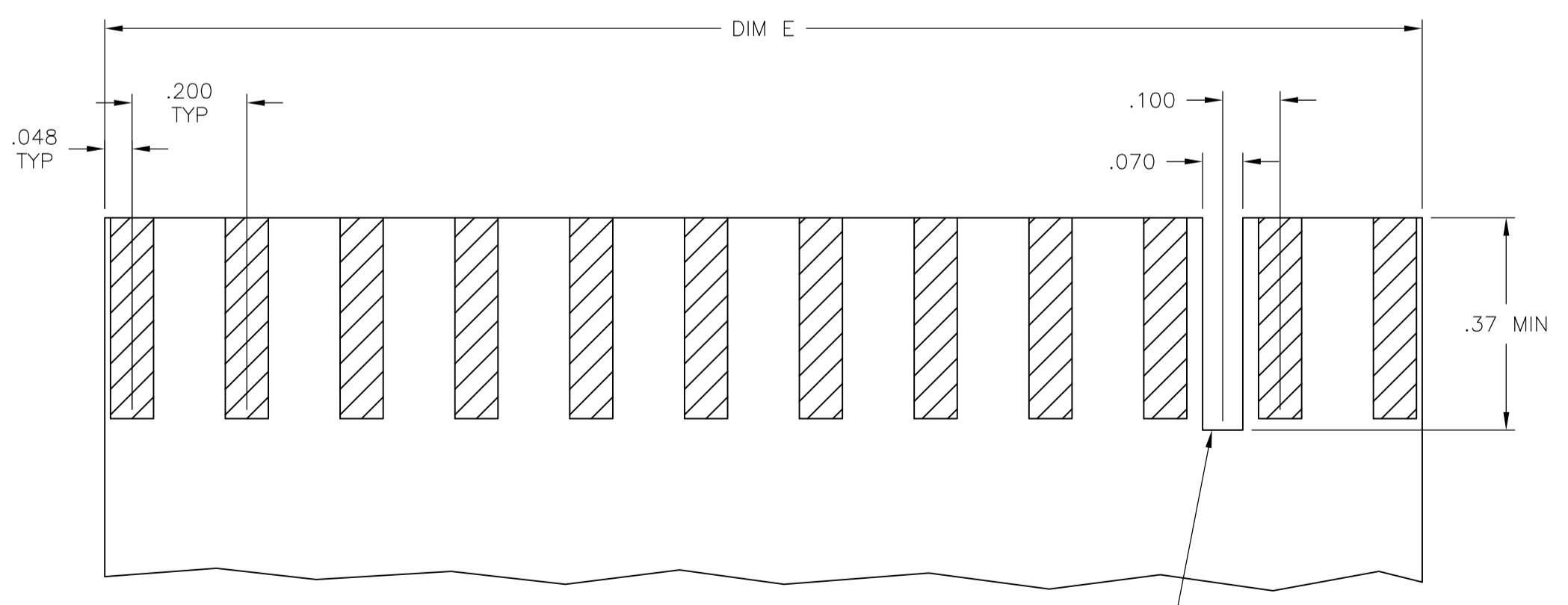
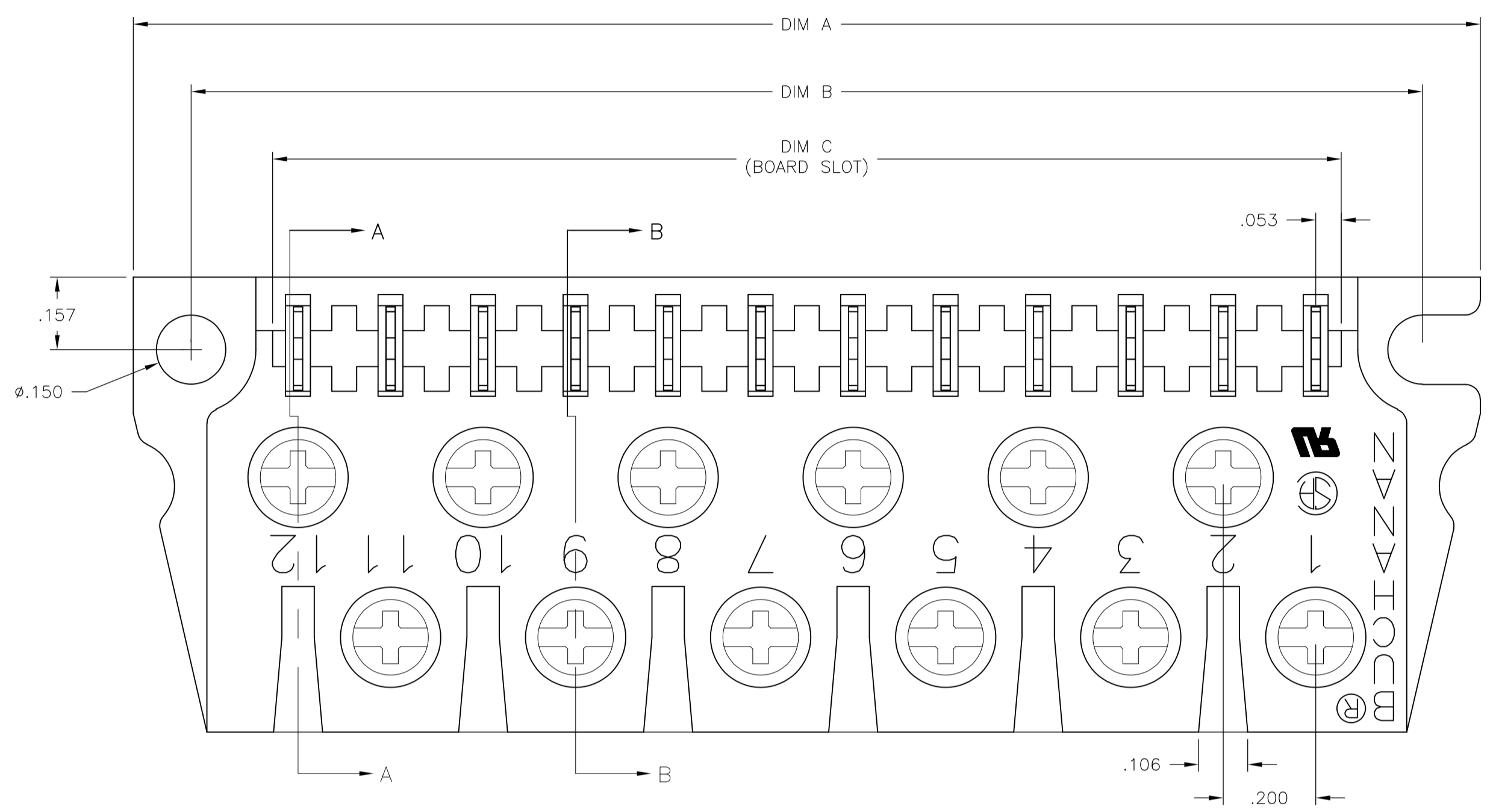
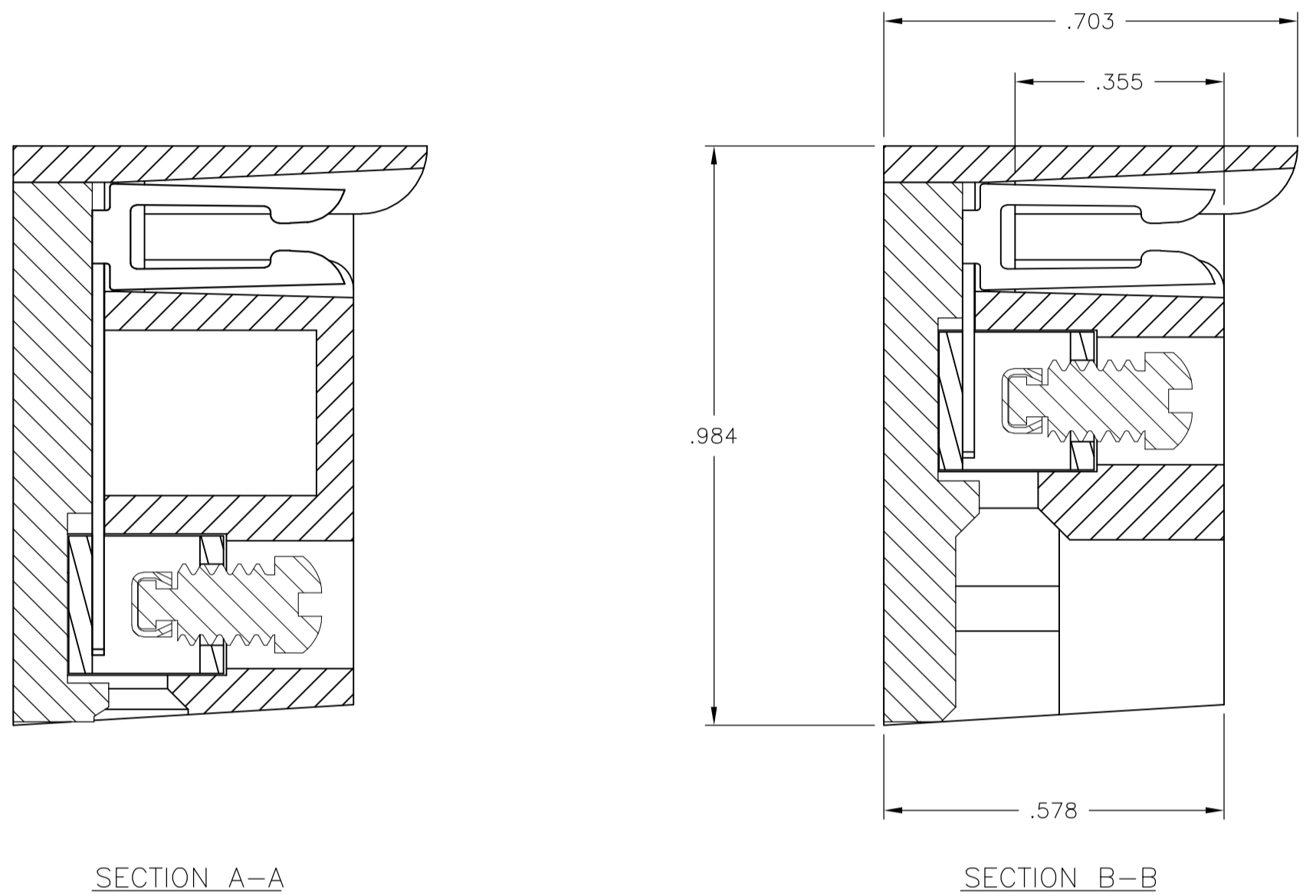
**NOTES:**

**MATERIAL:**  
 HOUSING: POLYESTER, UL94V-0, WHITE.  
 TUBULAR CONTACT: BRASS.  
 PC CONTACT: PHOSPHOR BRONZE, BRIGHT TIN PLATE.  
 SCREW: 6-32, STEEL, ZINC CHROMATE FINISH.  
 CLAMP: BRASS

**MECHANICAL:**  
 PITCH: .200"  
 WIRE STRIP LENGTH: .25"  
 RECOMMENDED TIGHTENING TORQUE: 5-8 IN-LBS.  
 BOARD INSERTION FORCE: 5.6 OZ. PER CKT.  
 BOARD SEPARATION FORCE: 1.8 OZ. PER CKT

**ELECTRICAL:**  
 MAX CURRENT: 10A.  
 OPERATING VOLTAGE: 250V.  
 DIELECTRIC WITHSTAND: 2500V.  
 WIRE RANGE: #12 STRANDED ONLY.  
 INSULATION RESISTANCE:  
 CONTACT RESISTANCE:

**ENVIRONMENTAL:**  
 OPERATING TEMP.: -65°C TO +140°C.



OPTIONAL POLARIZING NOTCH  
 LOCATION PER CUSTOMER REQUIREMENT  
 USE OPTIONAL POLARIZING KEY CAT. NO. PC17

RECOMMENDED PCB LAYOUT

OBSOLETE	7.095	7.110	7.470	7.720	36	PCB1A36S	1-1437410-7
OBSOLETE	5.895	5.910	6.270	6.520	30	PCB1A30S	1-1437410-5
OBSOLETE	4.695	4.710	5.070	5.320	24	PCB1A24S	1-1437410-3
OBSOLETE	3.495	3.510	3.870	4.120	18	PCB1A18S	1-1437410-1
	2.295	2.310	2.670	2.920	12	PCB1A12S	1437410-9
	DIM E	DIM C	DIM B	DIM A	NO. OF POS.	CATALOG NUMBER	PART NUMBER

THIS DRAWING IS A CONTROLLED DOCUMENT.

DIMENSIONS: INCHES

TOLERANCES UNLESS OTHERWISE SPECIFIED:

0 PL	± .005
1 PL	± .005
2 PL	± .005
3 PL	± .005
4 PL	± .005
ANGLES	± .1°

MATERIAL: - FINISH: -

WEIGHT: -

CUSTOMER DRAWING

DIN S SCHLEGEL 6/17/04  
 CHK S YODER 6/17/04  
 APVD S YODER 6/17/04

NAME: PCB1A ASSEMBLY TIN PLATE

SIZE: A1 CAGE CODE: 00779 DRAWING NO: 1437410-9

RESTRICTED TO: -

SCALE: 4:1 SHEET: 1 OF 1 REV: R

单击下面可查看定价，库存，交付和生命周期等信息

[>>TE Connectivity\(泰科\)](#)