

REVISIONS

P	LTR	DESCRIPTION	DATE	DWN	APVD
	A	Initial Release	19DEC2019	RS	DV

**Slit Adhesive Sleeve
(S-1048)**

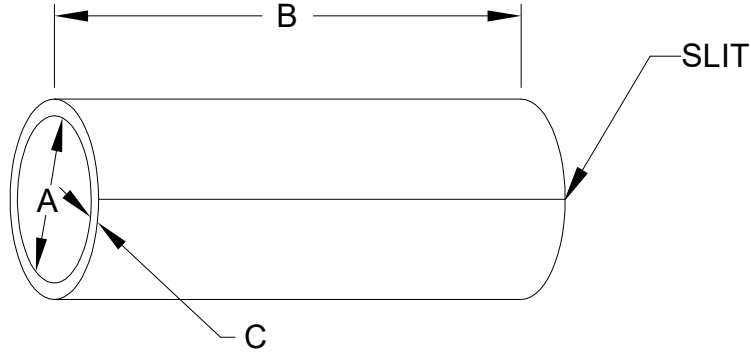


Table: Dimensions (inches)

Size	Extruded ID (A)	Cut Length (B)	Extruded Wall (C)
SAS-090-1.00-1048	.090 ± .005	1.000 ± .050	.024± .005
SAS-115-1.00-1048	.115 ± .005	1.000 ± .050	.032± .005
SAS-160-1.00-1048	.160 ± .005	1.000 ± .050	.032± .005
SAS-200-1.00-1048	.200 ± .005	1.000 ± .050	.035± .005
SAS-250-1.00-1048	.250 ± .010	1.000 ± .050	.035± .005
SAS-300-1.00-1048	.300 ± .010	1.000 ± .050	.067± .010

Color: Amber

Requirement: The Slit Adhesive Sleeves shall meet all the requirements of TE specification 108-20052.

THIS DRAWING IS UNPUBLISHED.
 ALL RIGHTS RESERVED.
 © COPYRIGHT - TE Connectivity Ltd.

DIMENSIONS: INCHES	DWN RS	15MAY2019	MATERIAL	-	FINISH	-		
	CHK HL	19DEC2019						
TOLERANCES UNLESS OTHERWISE SPECIFIED: 0 PLC ± - 1 PLC ± - 2 PLC ± - 3 PLC ± - 4 PLC ± - ANGLES ± -	APVD DV	19DEC2019					NAME SLIT ADHESIVE SLEEVE SAS-XXX-XXX-1048	
	PRODUCT SPEC	-	SIZE	CAGE CODE	DRAWING NO	RESTRICTED TO		
	APPLICATION SPEC	108-120052	A4	06090	© SAS-XXX-XXX-1048	-		
	WEIGHT	-	CUSTOMER DRAWING			SCALE 1:1	SHEET 1 OF 1	REV A

单击下面可查看定价，库存，交付和生命周期等信息

[>>TE Connectivity\(泰科\)](#)