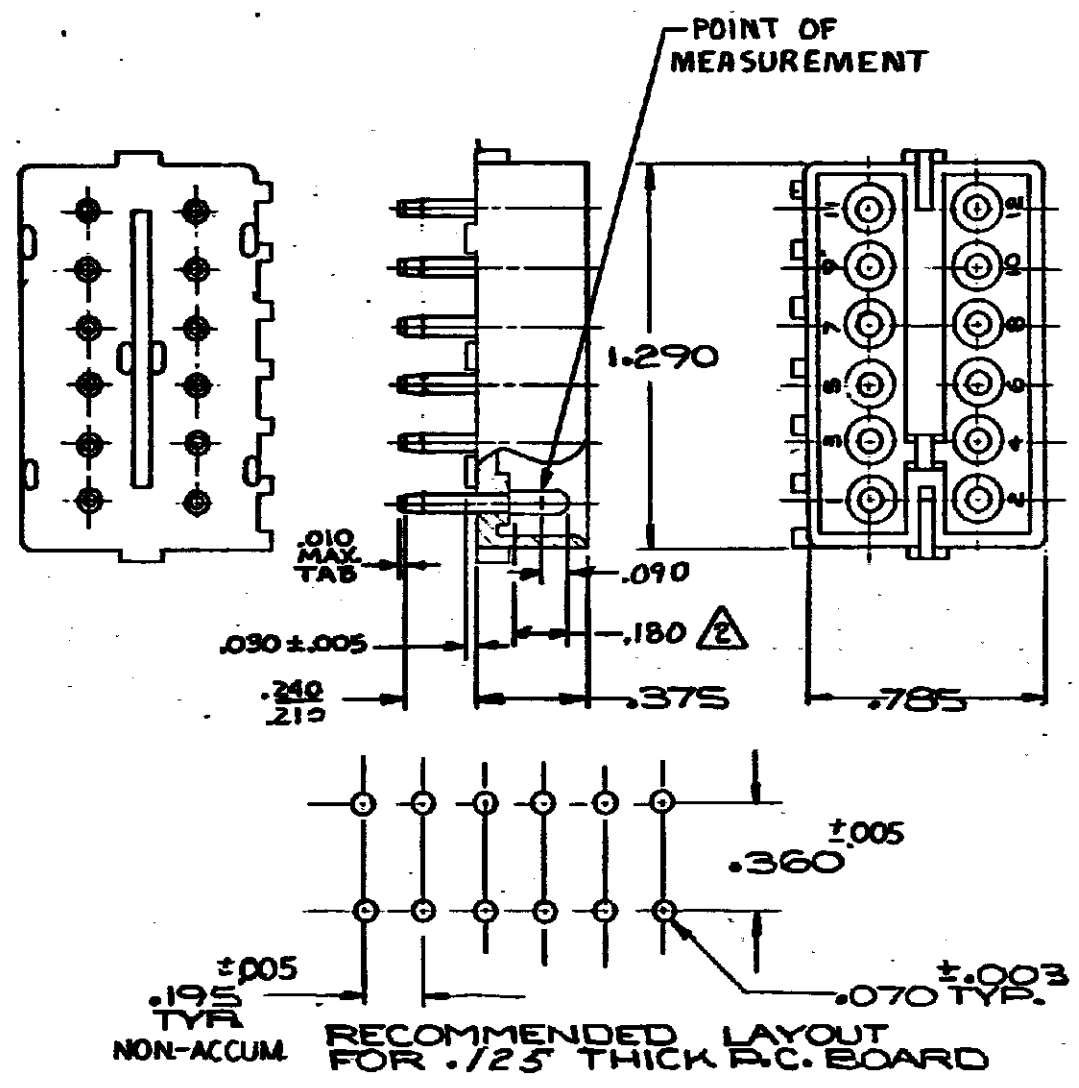


DRAWING MADE IN AMERICAN PROJECTION



- PARTS COMPLY WITH AMP SOLDERABILITY SPEC. NO. 109-11-3
- CONTACT IS PLATED OVERALL WITH .000050 NICKEL, THEN .000030 GOLD OVER CONTACT LENGTH INDICATED AND MATTE TIN ON SOLDER TAIL END.
- DIMENSION SHOWN REPRESENT PRODUCT IN DRY CONDITION. ADDITIONAL 2% GROWTH DUE TO END USE LOCATION MOISTURE ABSORPTION MAY OCCUR AND SHOULD BE ACCOUNTED FOR.

OBSOLETE

ASSEMBLY NO.	HSG. MATL.	COLOR	FIN MATL.	FINISH
350220-2	NYLON	NATURAL	COPPER ALLOY	GOLD/A
350220-1	NYLON - NATURAL		COPPER ALLOY - PRE-TIN	

DIMENSIONS IN INCHES, UNLESS OTHERWISE SPECIFIED

M2	REVISED PER ECR-21-117185	PJ	VS	20OCT2021
M1	REVISED PER ECR-15-006702	NS	PO	29JUL2013
LTR	REVISION RECORD	EDW	APW	DATE

DATE	NUMBER	NAME	REMARKS	ITEM NO.
6-27-73	9-Edman			
4-28-73	Edman			
MATERIAL AND FINISH		SEE TABLE		
WIRE - RANGE - INSULATION		TYPE		
TOLERANCE EXCEPT AS NOTED		SCALE		
LOC		REV		
NAME		PART NO.		
12 CIRCUIT MATE-N-LOK PCB BOARD PIN HEADER		350220		

AMP 1223 REV 11/63

单击下面可查看定价，库存，交付和生命周期等信息

[>>TE Connectivity\(泰科\)](#)