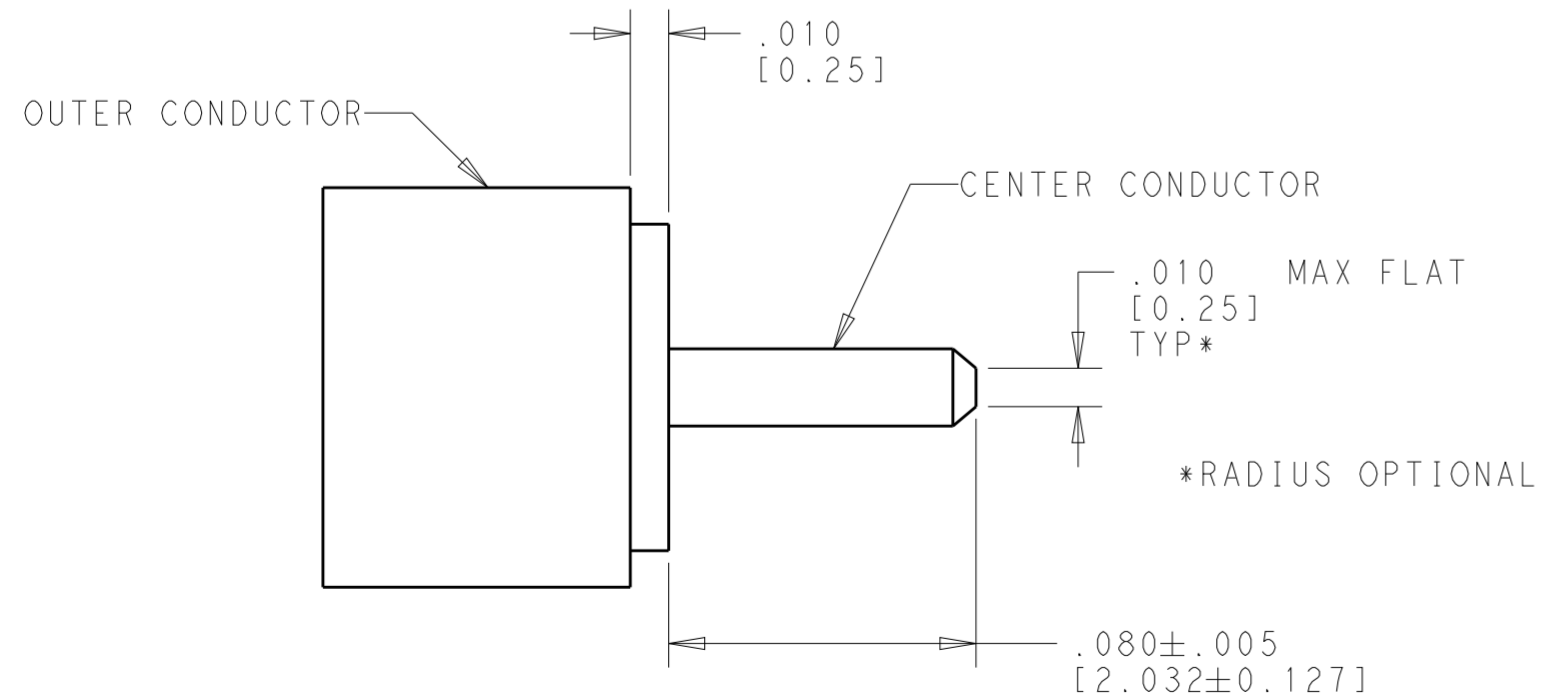
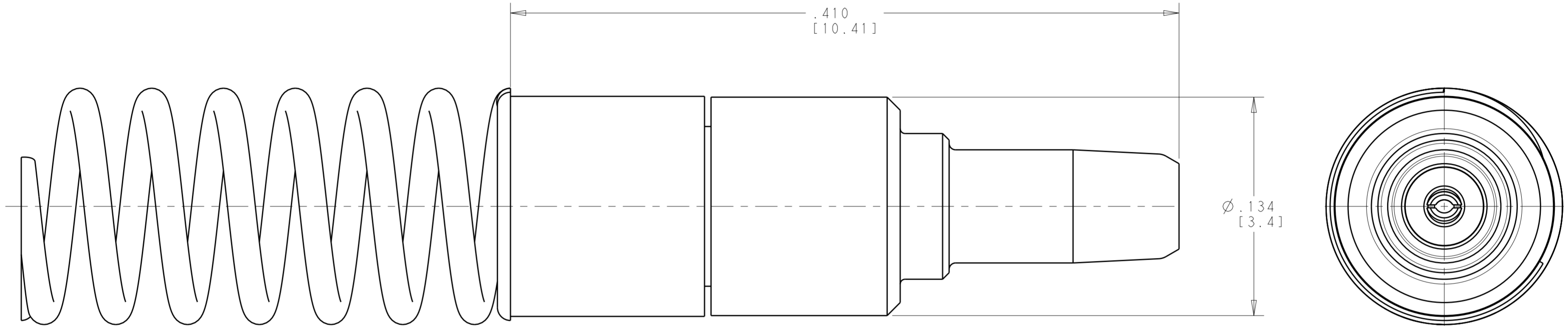


P	LTR	DESCRIPTION	DATE	DWN	APVD
A		RELEASED PER ECO 20-004776	4-2-20	CT	FB



- 1 MATERIAL:
BODY AND CENTER CONTACT: COPPER ALLOY
INSULATOR: TEFLON (PTFE)
SPRING: STAINLESS STEEL
- 2 FINISH: FRONT BODY AND CENTER CONTACT: 50-90 μIN GOLD PLATE OVER NICKEL
REAR BODY: 3-15 μIN GOLD PLATE OVER NICKEL
- 3. SPRING IS SHIPPED LOOSE FROM CONTACT ASSEMBLY

2332772-1

PART NO.

THIS DRAWING IS A CONTROLLED DOCUMENT.		DWN K. MILLER 02NOV2018	TE Connectivity	
		CHK F. BLASICK 20AUG2019		
DIMENSIONS: INCHES [mm]		PRODUCT SPEC 108-163006		NAME NanoRF PIN CONTACT ASSEMBLY .086 CABLE VERSION
TOLERANCES UNLESS OTHERWISE SPECIFIED: 0 PLC ± 1 PLC ± 2 PLC ± 3 PLC ±.005[0.13] 4 PLC ± ANGLES ± FINISH		APPLICATION SPEC 408-163016		RESTRICTED TO
MATERIAL		WEIGHT	SIZE A200779	DRAWING NO C-2332772
1		CUSTOMER DRAWING		SCALE 20:1 SHEET 1 OF 1 REV A

单击下面可查看定价，库存，交付和生命周期等信息

[>>TE Connectivity\(泰科\)](#)