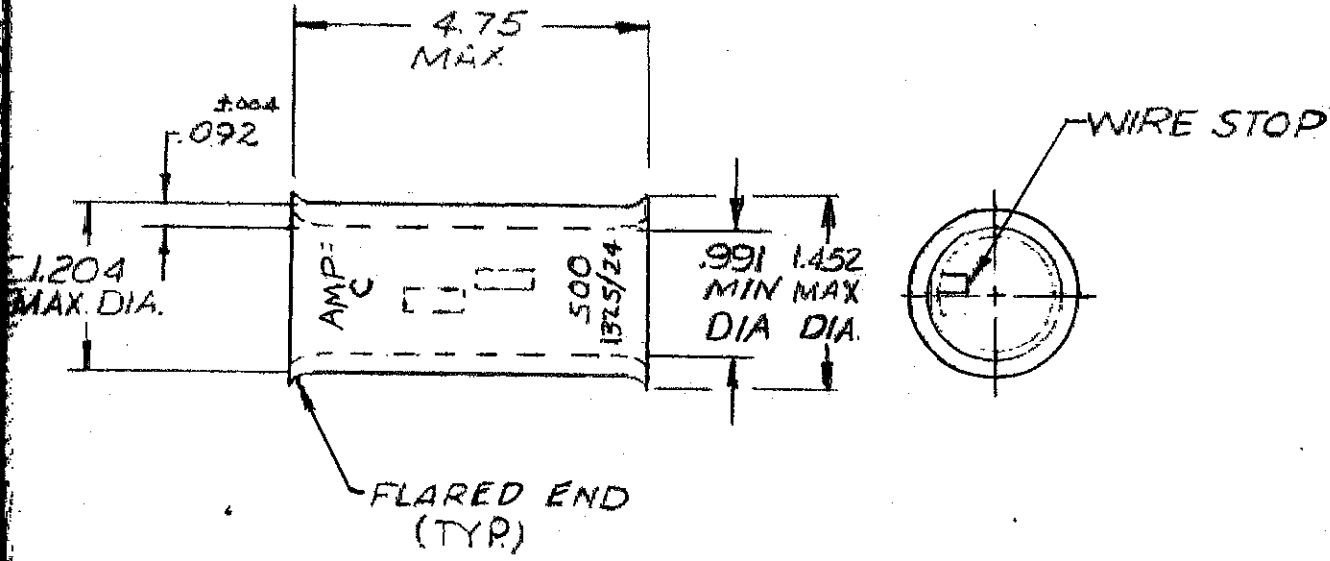


MADE IN AMERICAN PROJECTION

LDC
G 14 A

UNPUBLISHED COPY NOT TO BE REPRODUCED NOR PUBLISHED WITHOUT WRITTEN PERMISSION OF AMP INCORPORATED

REVISIONS				
REV.	DESCRIPTION	BY	DATE	APP.
0	NPS 71-0921	J.B.		
A	ADDED RR STAMPING P7367	LD	11/11/74	wrc:m
B	REVISED PER CG3A-0637-01		1/10/02	lrc



UNLESS SPECIFIED TOLERANCES: DECIMALS ±.008 ANGLES ±5° MATERIAL: COPPER (ASTM B-75) FINISH: AN PLATE (MIL-T-10727)	2-11-72 Jm Enning	AMP	
	2-11-72 Jm Enning	WIRE SPLICE AMPOWER-BUTT WIRE SIZE: 500MCM	
2-11-72 Jm Enning	A	00779	53089
OTHER APP.	PARTS	SWG: 1 OF 1	

单击下面可查看定价，库存，交付和生命周期等信息

[>>TE Connectivity\(泰科\)](#)