

SHELL
MATERIAL: ALUMINUM ALLOY
PER ASTM-B-85
FINISH: CHROMATE COATED PER
MIL-C-5541, CLAS 1A

DATE CODE AND PART
NUMBER INK STAMPED

DUST COVER
INSTALLED FOR SHIPMENT
MAT'L: CONDUCTIVE
THERMOPLASTIC

INSULATOR, SOCKET
MAT'L: PPS PER
MIL-M-24519

INSERT RETENTION PLATE (4 REQ'D)
MAT'L: ALUMINUM ALLOY
FINISH: CHROMATE (ALODINE 1200)
PER MIL-C-5541 CLASS 1A

RETAINER
MAT'L: ALUMINUM ALLOY
FINISH: CHROMATE COATED

#4-40 UNC PAN
HEAD SCREWS (10 PLC)

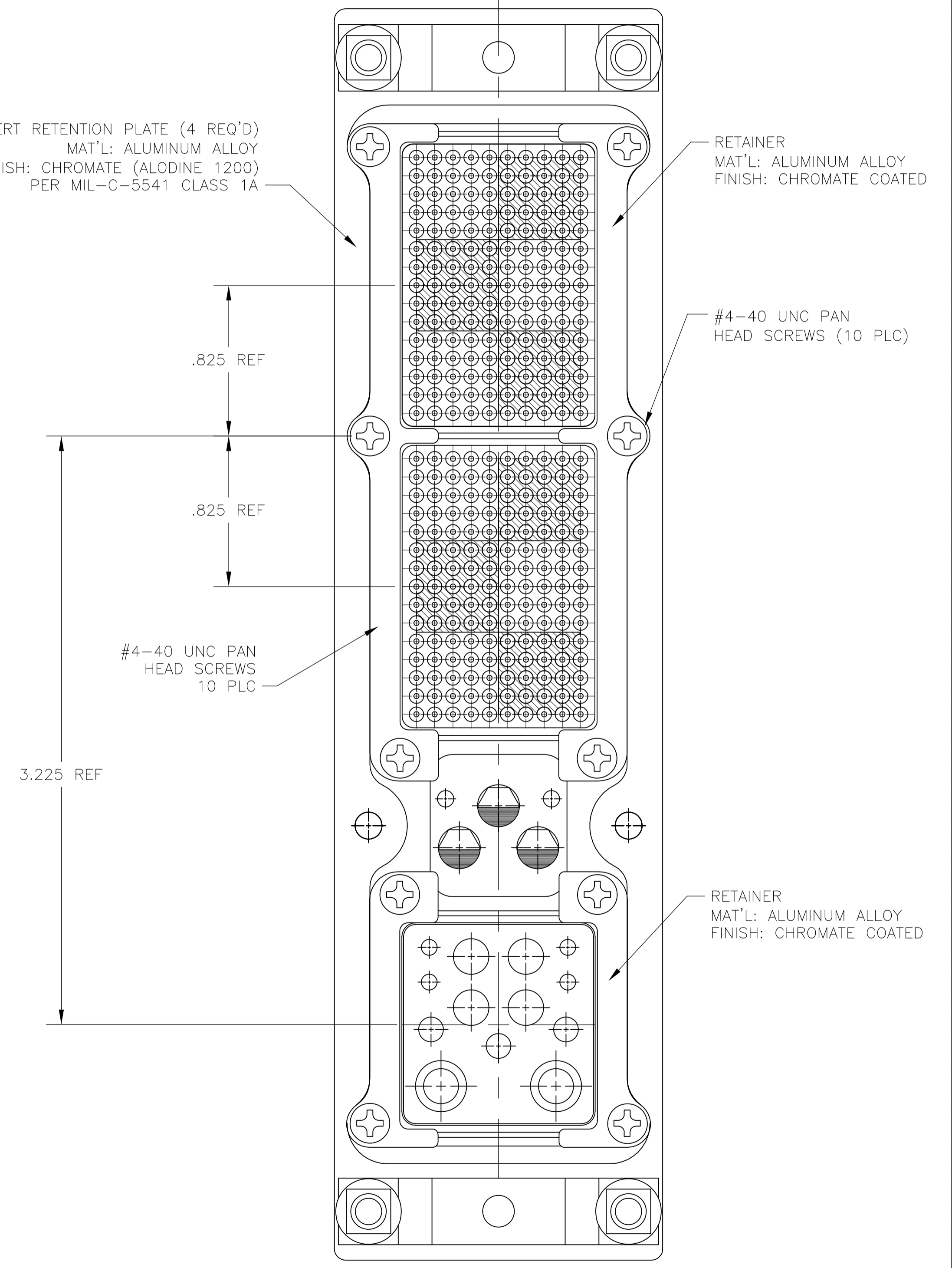
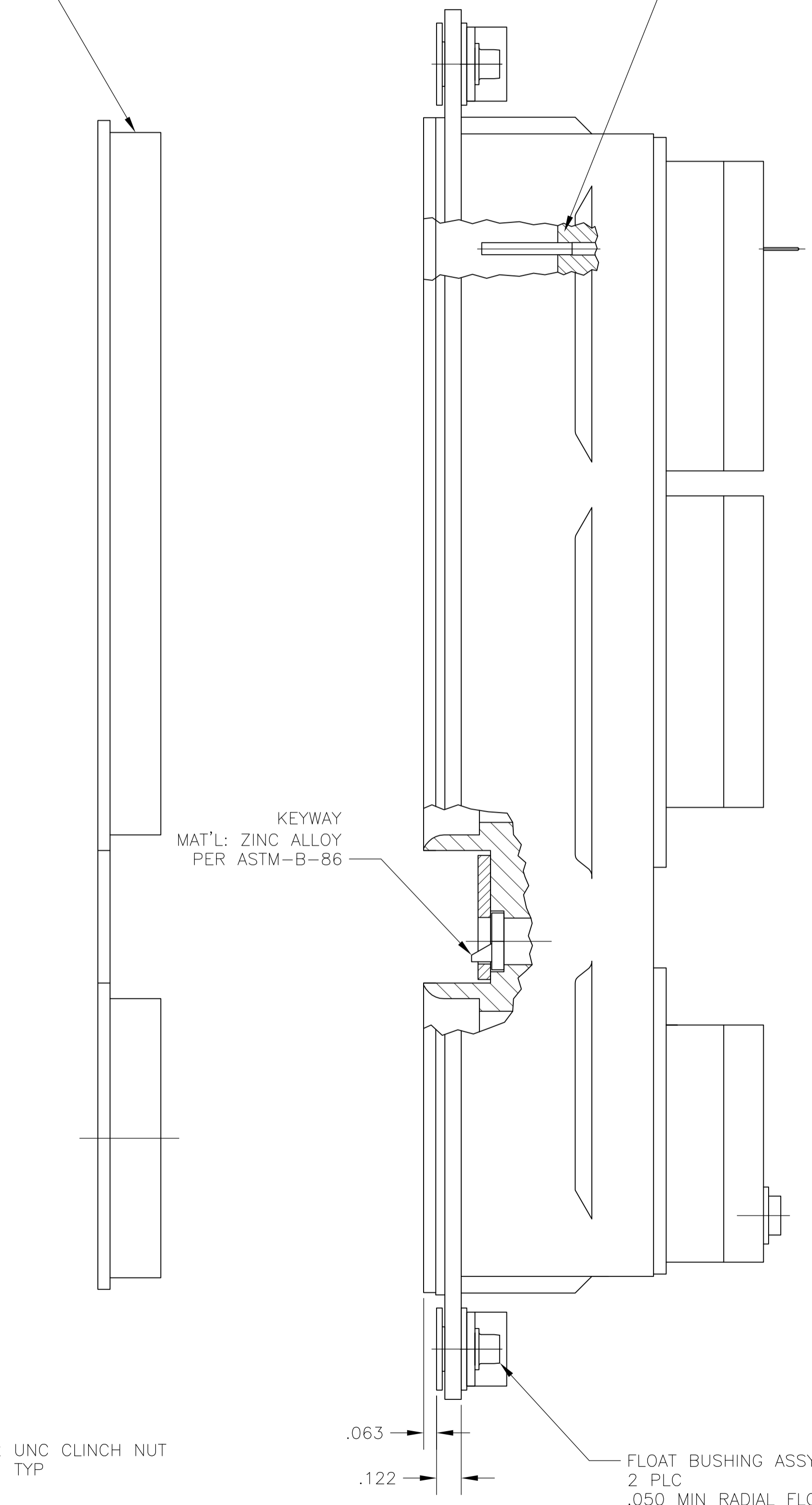
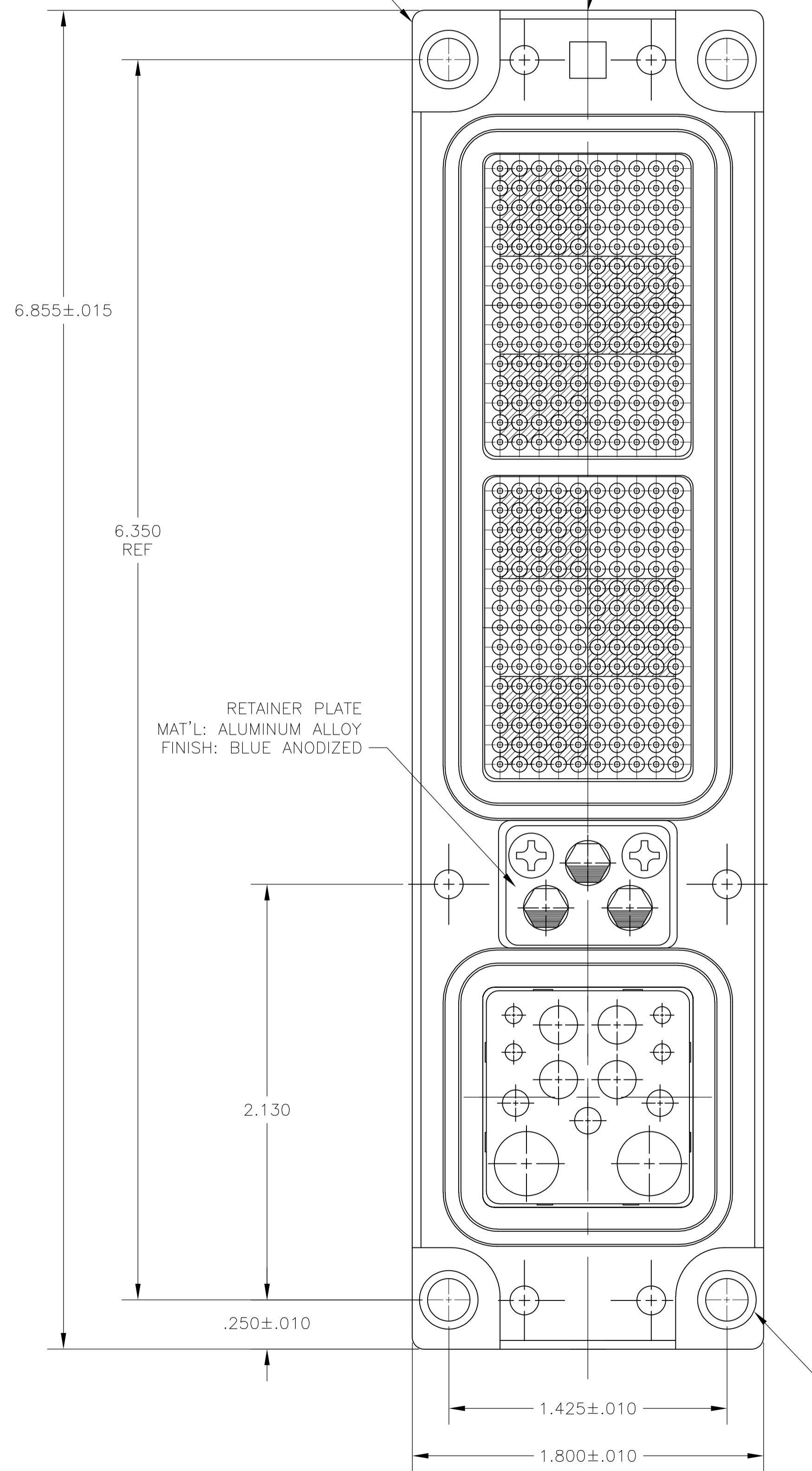
RETAINER
MAT'L: ALUMINUM ALLOY
FINISH: CHROMATE COATED

KEYWAY
MAT'L: ZINC ALLOY
PER ASTM-B-86

#4-40 UNC PAN
HEAD SCREWS
10 PLC

FLOAT BUSHING ASSY
2 PLC
.050 MIN RADIAL FLOAT

#6-32 UNC CLINCH NUT
TYP



THIS DRAWING IS A CONTROLLED DOCUMENT.

DIMENSIONS:	TOLERANCES UNLESS OTHERWISE SPECIFIED:
INCHES	
0 PLC	± .005
1 PLC	± .005
2 PLC	± .005
3 PLC	± .005
4 PLC	± .005
ANGLES	± .005

APPROVED:	DATE:	BY:	DATE:
C. THOMAS	17FEB06	V. FURLER	17FEB06
PRODUCT SPEC		TE Connectivity	
APPLICATION SPEC		CONNECTOR ASSEMBLY, ARINC 600, RECEPTACLE, SIZE 2, (UNSEALED)	
WEIGHT		SIZE	CAGE CODE
		A1	00779
CUSTOMER DRAWING		DRAWING NO	211700
		SCALE	1:1
		SHEET	1 OF 1
		REV	D

单击下面可查看定价，库存，交付和生命周期等信息

[>>TE Connectivity\(泰科\)](#)