



# 2400-2485 & 4900-5875 MHz DUAL BAND STAMPED ANTENNA

**Part Numbers: 2118788-1, 2118788-2**

## FEATURES & BENEFITS

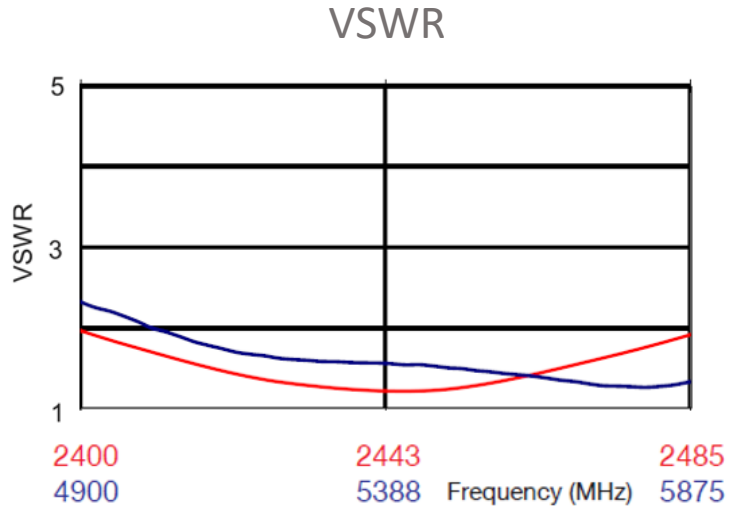
- IEEE 802.11 a/b/g/n/ac/ad, includes frequencies of Bluetooth, ZigBee, and Wi-Fi products)
- Global Frequency coverage
- On board SMD mount stamped PIFA antenna
- Minimal keep out zone requirement
- Performance dependent on ground plane size and design

## SPECIFICATIONS

| Frequency Range (MHz)   | 2400-2485  | 4900-5875 |
|-------------------------|--|-----------|
| VSWR                    | < 2.5:1  | < 2.5:1   |
| Average Efficiency      | 75%  | 75%       |
| Peak Gain               | 1.9dBi   | 2.9dBi    |
| Average Gain            | -1.3dBi  | -1.3dBi   |
| Power Handling          | 3 Watt cw  |           |
| Feed Point Impedance    | 50 ohms  |           |
| Polarization            | Linear   |           |
| Size                    | 28.60 mm x 6.05 mm x 4.28 mm   |           |
| Weight                  | < 1.1 g  |           |
| Mounting                | Surface mount  |           |
| Operating Temperature   | -40 to +85°C   |           |
| Storage Temperature     | -40 to +85°C   |           |
| Packaging Specification | Tape & Reel / Tray & Box   |           |
| Hazardous Materials     | A certificate of conformance is available from the product page on TE website. |           |

Data measured in free space and on reference ground plane of 30 mm length and 35 mm width, application data might vary

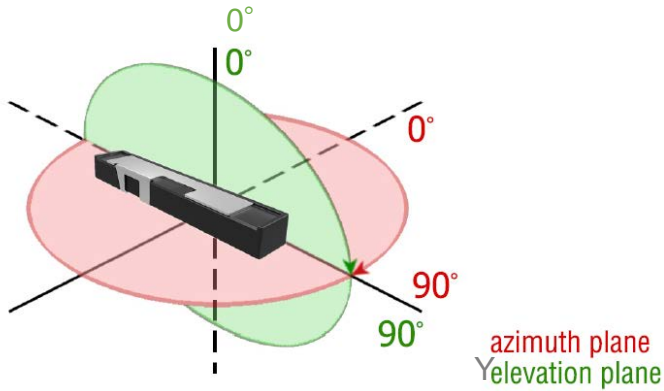
## RF DATA



Data measured in free space and on reference ground plane of 30 mm length and 35 mm width, application data might vary

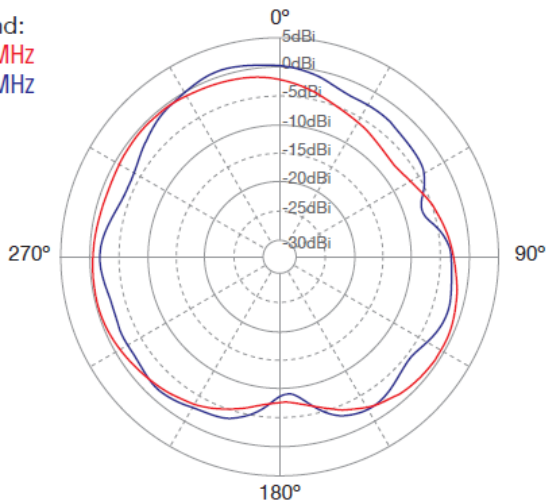
## RADIATION PATTERN

### Test setup



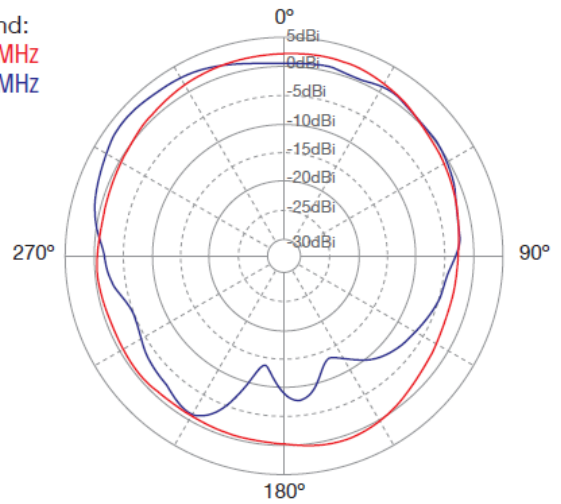
### Azimuth

Legend:  
2440 MHz  
5470 MHz



### Elevation

Legend:  
2440 MHz  
5470 MHz

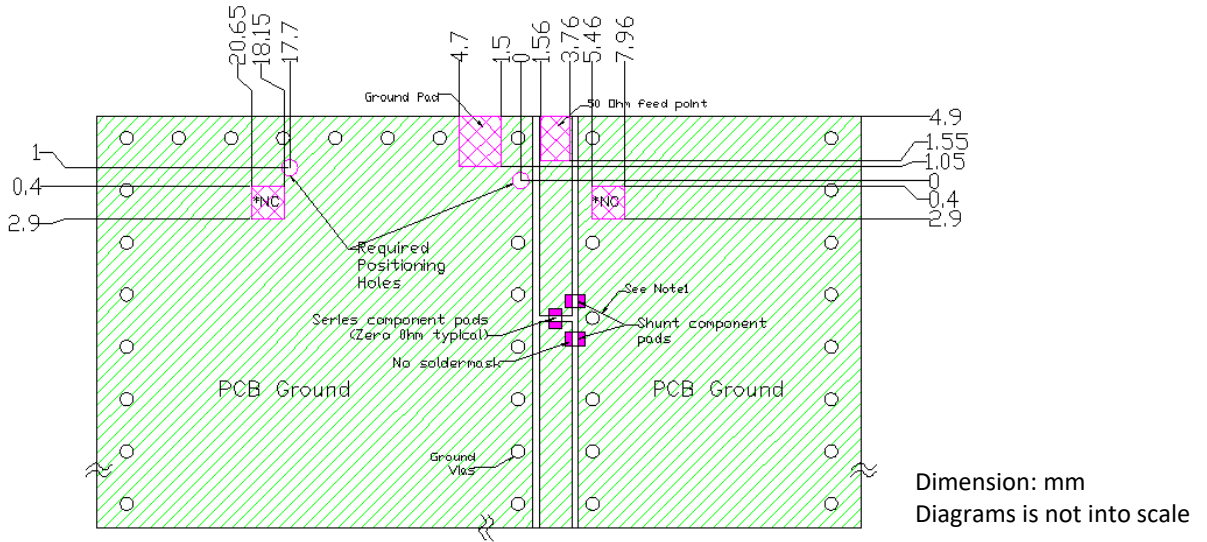


Data measured in free space and on reference ground plane of 30 mm length and 35 mm width, application data might vary

# Wi-Fi DUAL BAND STAMPED ANTENNA

Standard Antenna Solutions

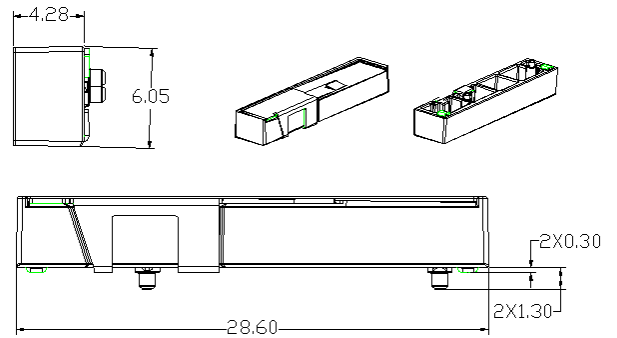
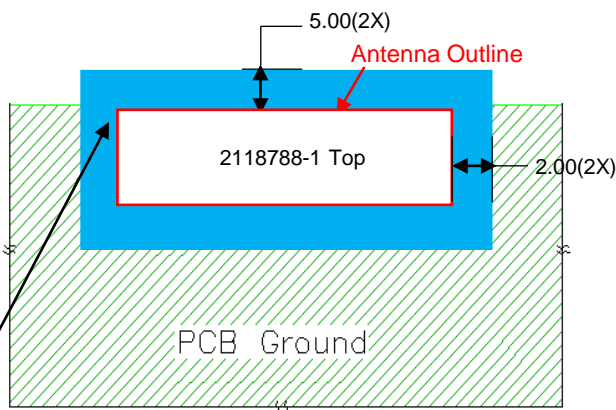
## MOUNTING GUIDE



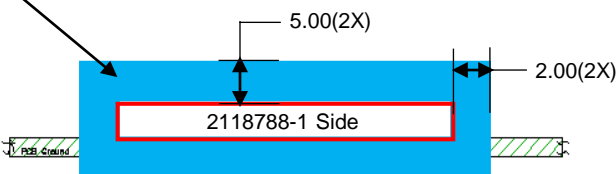
- NOTES:
1. Suggested matching component pads
  2. Antenna must be mounted on the edge of PCB.
  3. NC = No connection (mechanical mounting pads).
  4. For more information please call TE.

## KEEP OUT AREA

## DIMENSIONS



Keep Out Area



Dimension: mm  
Diagrams is not into scale

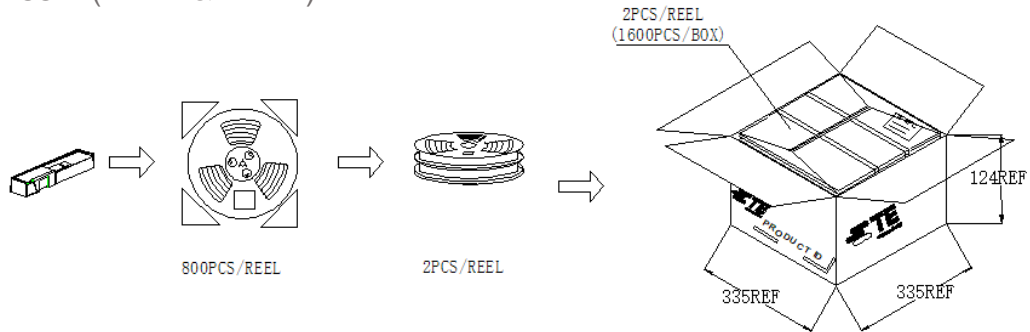
Dimension: mm  
Diagrams is not into scale

# Wi-Fi DUAL BAND STAMPED ANTENNA

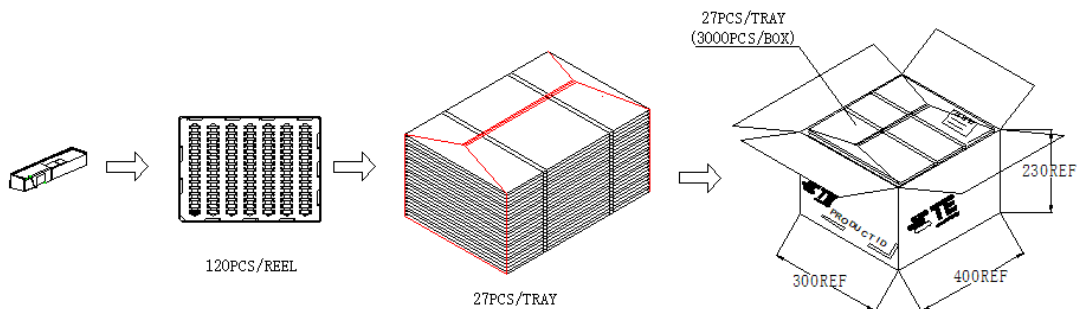
Standard Antenna Solutions

## PACKAGING

### 2118788-1 (TAPE & REEL)



### 2118788-2 (TRAY)



### TE TECHNICAL SUPPORT CENTER

|                   |                       |
|-------------------|-----------------------|
| USA:              | +1 (800) 522-6752     |
| Canada:           | +1 (905) 475-6222     |
| Mexico:           | +52 (0) 55-1106-0800  |
| Latin/S. America: | +54 (0) 11-4733-2200  |
| Germany:          | +49 (0) 6251-133-1999 |
| UK:               | +44 (0) 800-267666    |
| France:           | +33 (0) 1-3420-8686   |
| Netherlands:      | +31 (0) 73-6246-999   |
| China:            | +86 (0) 400-820-6015  |

For phone numbers in other countries, go to [te.com/support-center](http://te.com/support-center)

### te.com

TE Connectivity, TE Connectivity (logo) are trademarks. All other logos, products and/or company names referred to herein might be trademarks of their respective owners.

The information given herein, including drawings, illustrations and schematics which are intended for illustration purposes only, is believed to be reliable. However, TE Connectivity makes no warranties as to its accuracy or completeness and disclaims any liability in connection with its use. TE Connectivity's obligations shall only be as set forth in TE Connectivity's Standard Terms and Conditions of Sale for this product and in no case will TE Connectivity be liable for any incidental, indirect or consequential damages arising out of the sale, resale, use or misuse of the product. Users of TE Connectivity products should make their own evaluation to determine the suitability of each such product for the specific application.

© 2020 TE Connectivity Ltd. family of companies All Rights Reserved.

06/2022

单击下面可查看定价，库存，交付和生命周期等信息

[>>TE Connectivity\(泰科\)](#)