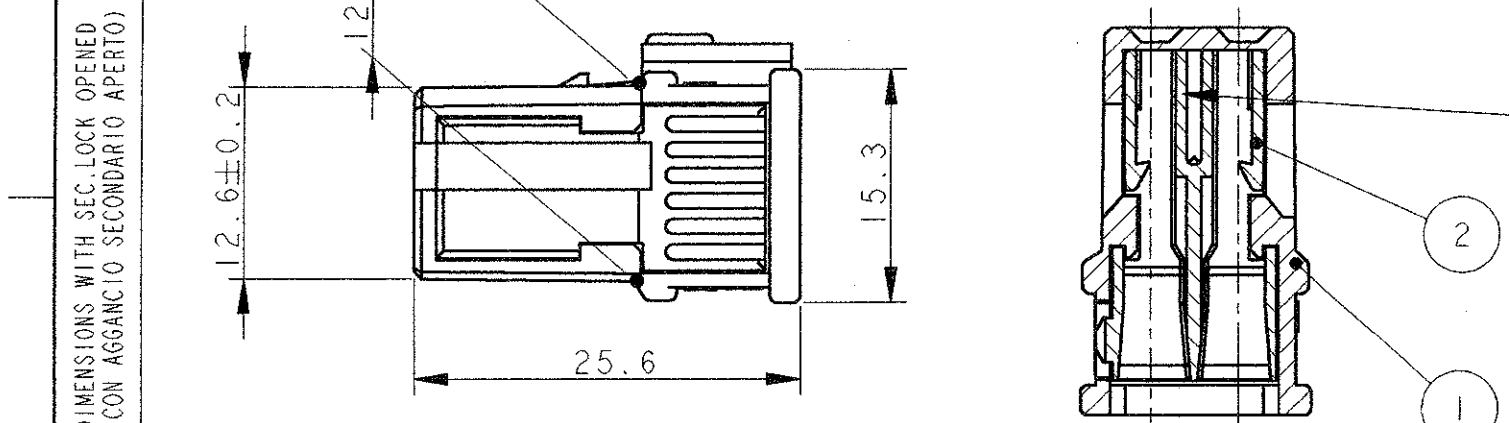
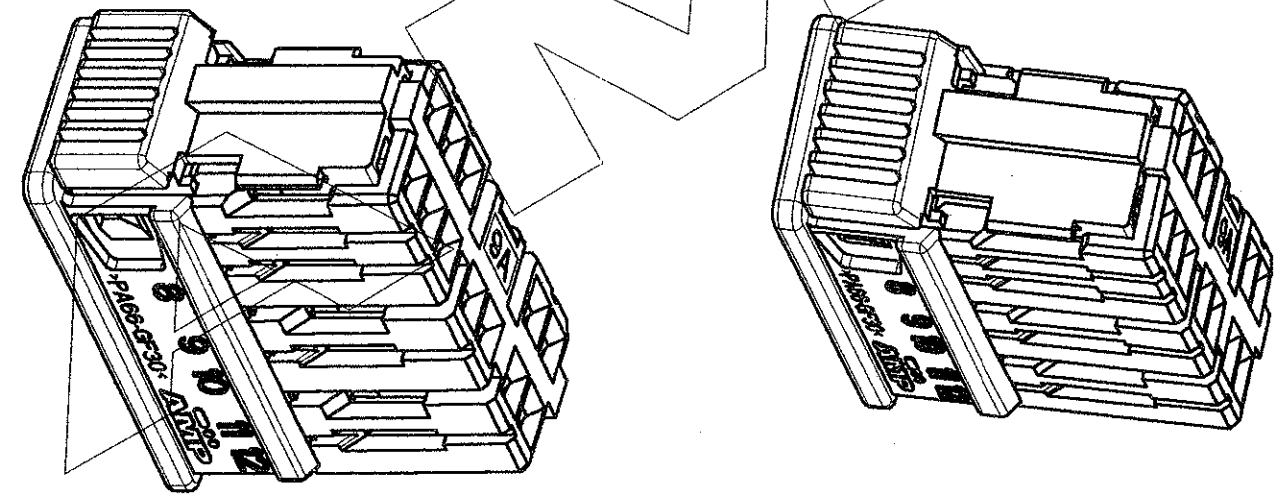


LOC	DIST	REVISIONS REVISIONI			
P	LTR REV	DESCRIPTION DESCRIZIONE	DATE DATA	DWN DIS.	APVD APP.
	A	FIRST ISSUE EC ET00-0065-99 (WAS 96-51009)	FEB99	A.M.	O.C.
	AI	RELEASED FOR PRODUCTION	ET00 0201-99	17 Sept 99	G.S. O.C.

SECTION A-A
(SEZIONE A-A)

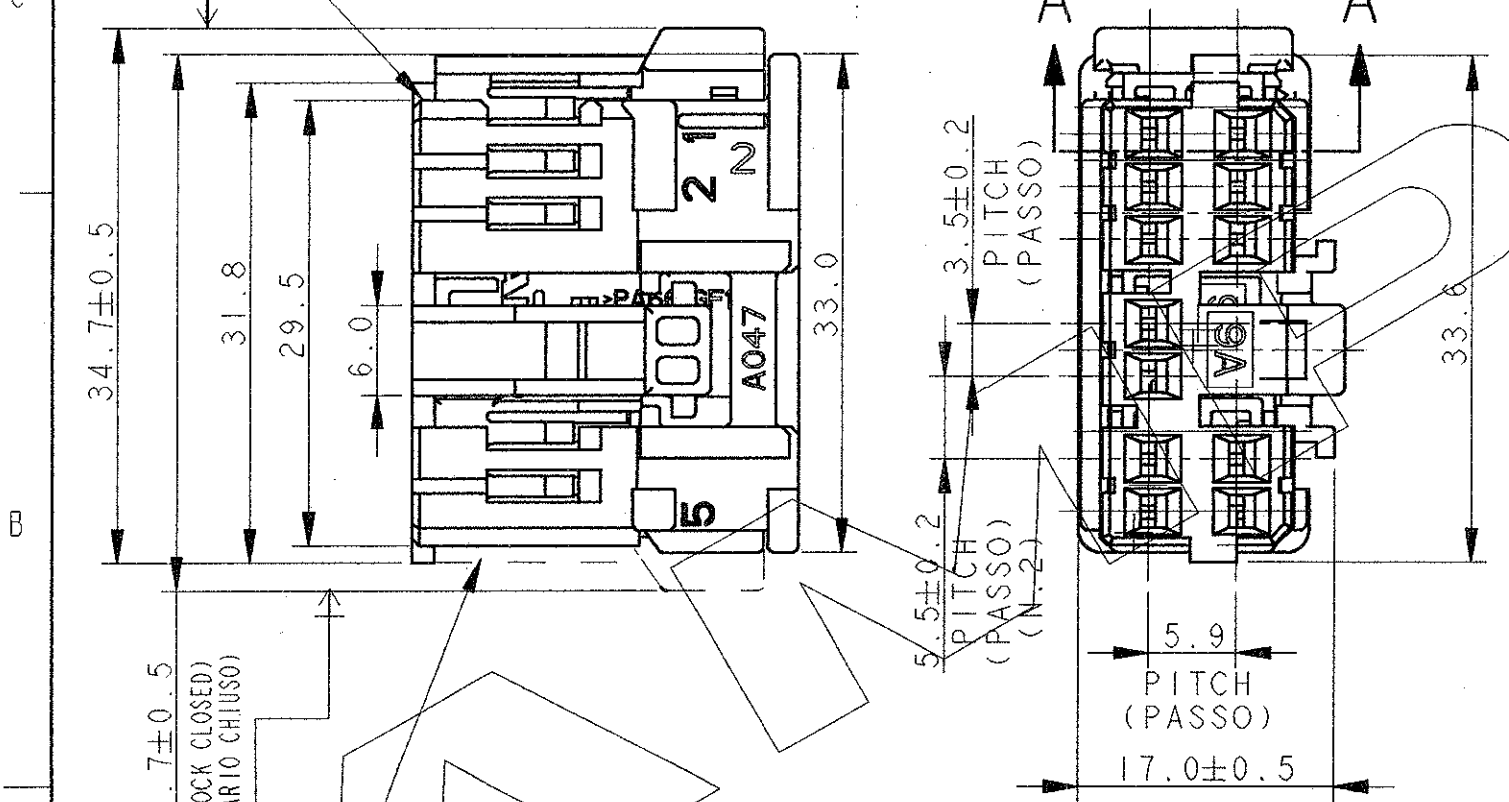


12 CAV. FOR NEW GENERATION MULTILOCK REC. CONTACT P/N 284087-2, 284088-2 AND 284166-2. (12 CAV. PER CONTATTI FEMMINA NUOVA GENERAZIONE MULTILOCK P/N 284087-2, 284088-2 E 284166-2.)



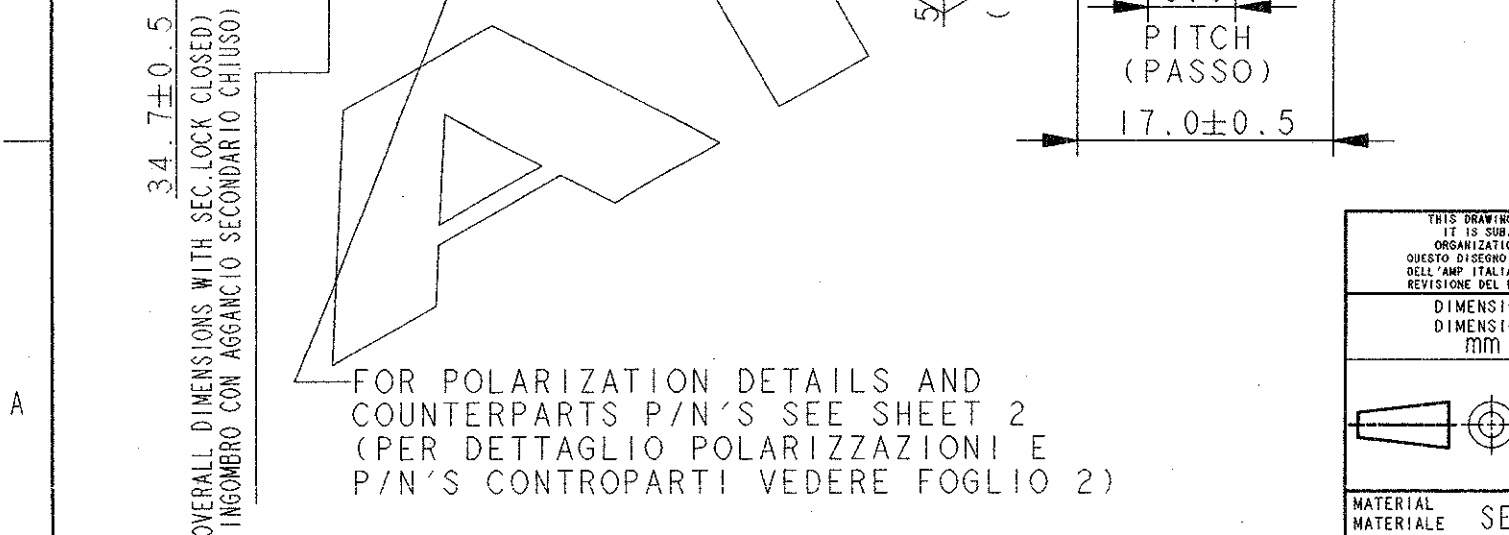
OVERALL DIMENSIONS WITH SEC. LOCK OPENED (INGOMBRO CON AGGANCIO SECONDARIO APERTO)

SUPPLIED WITH SEC. LOCKING DEVICE ON PRE-ASSEMBLED POSITION (FORNITO CON IL DISPOSITIVO DI AGGANCIO SECONDARIO IN POS. PRE-ASSEMBLATO)



282990-2 AS SHOWN (COME MOSTRATO)

ITEM	DESCRIPTION (DESCRIZIONE)	FINISH/COLOUR (FINITURA/COLORE)	MATERIAL (MATERIALE)	PART NUMBER (NUMERO)
2	RECEPTACLE HOUSING (BLOCC. PORTA FEMMINE)	SEE SHEET 2 VED. FOGLIO 2	PA 66 G.F.	SEE SHEET 2 VED. FOGLIO 2
1	SEC. LOCKING DEVICE (AGGANCIO SECONDARIO)	SEE SHEET 2 VED. FOGLIO 2	PA 66 G.F.	SEE SHEET 2 VED. FOGLIO 2



THIS DRAWING IS A CONTROLLED DOCUMENT FOR AMP INCORPORATED. IT IS SUBJECT TO CHANGE AND THE CONTROLLING ENGINEERING ORGANIZATION SHOULD BE CONTACTED FOR THE LATEST REVISION. QUESTO DISEGNO E' UN DOCUMENTO DI PROPRIETA' E RESPONSABILITA' DELL'AMP ITALIA S.P.A. SOGGETTO A VARIAZIONI. PER OTTENERE L'ULTIMA REVISIONE DEL DISEGNO CONTATTARE AMP ITALIA S.P.A.

DIMENSIONS: DIMENSIONI: mm

TOLERANCES UNLESS OTHERWISE SPECIFIED: TOLLERANZE, SE NON DIVERSAMENTE SPECIFICATO

0 PLC/DEC ±0.3
1 PLC/DEC ±0.3
2 PLC/DEC ±
3 PLC/DEC ±
4 PLC/DEC ±
ANGLES / ANGOLI ±2

MATERIAL MATERIALE SEE TABLE (VEDI TABELLA)

FINISH FINITURA -

DWN / DIS. 4-MAR-99 ANDREA MARANGON
CHK / CONT. 4-MAR-99 OSCARE CANUTO
APVD / APP. 4-MAR-99 ALESSANDRO GENTA

NAME NAME

PRODUCT SPEC SPEC DI PRODOTTO 108-20175

APPLICATION SPEC SPEC DI APPLICAZIONE 114-20098

AMP ITALIA SpA. C.so Filii Cervi 15 COLLEGNO (TO)

AMP

12 POS. NEW GENERATION RECEPTACLE CONNECTOR for trucks

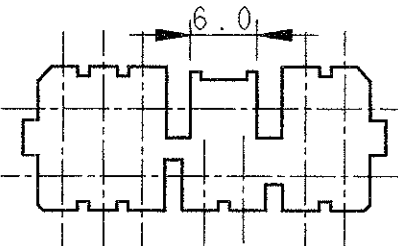
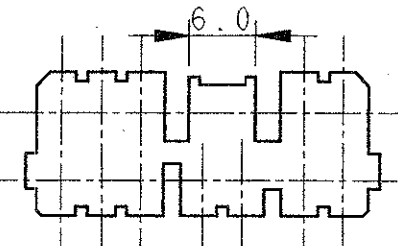
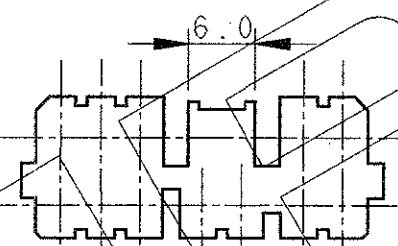
SIZE A3 CAGE CODE 00779 DRAWING NO. NUMERO 282990

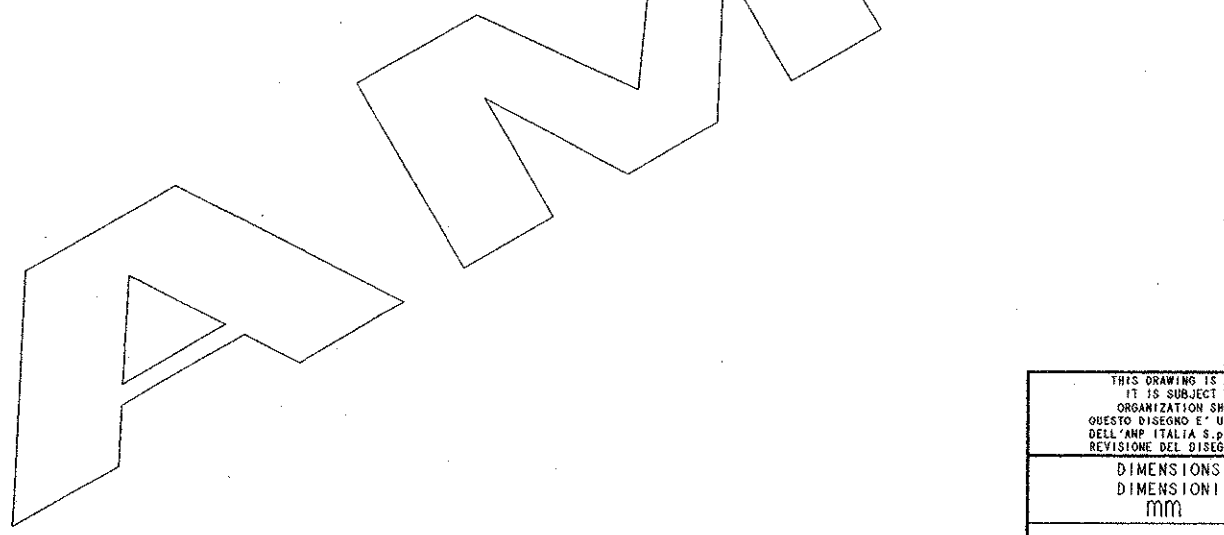
WEIGHT PESO 5.5 g

CUSTOMER DRAWING DISEGNO PER CLIENTE FOR REFERENCE ONLY SOLO PER RIFERIMENTO

SCALE SCALA 2:1 SHEET FOGLIO 1 OF DI 2 REV AI

LOC	DIST	REVISIONS REVISIONI		
		P	LTR REV	DESCRIPTION DESCRIZIONE
				DATE DATA
				DWN DIS.
				APVD APP.
SEE SHEET 1, (VEDERE FOGLIO 1)				

P/N	ITEM 1 COLOUR (COLORE)	GRAPHIC REPRESENTATION MATING FACE (RAPPRESENTAZIONE GRAFICA LATO ACCOPPIAMENTO)	P/N FREE HANGING COUNTERPART (CONTROPARTE VOLANTE)	P/N APPLICATION PANEL (DIMA DI APPLICAZIONE)
282990-2	BLACK (NERO)		282993-2	92-51126-2
282990-3	BLUE (BLU)		282993-3	92-51126-3
282990-4	GREY (GRIGIO)		282993-4	92-51126-4



<small>THIS DRAWING IS A CONTROLLED DOCUMENT FOR AMP INCORPORATED. IT IS SUBJECT TO CHANGE AND THE CONTROLLING ENGINEERING ORGANIZATION SHOULD BE CONTACTED FOR THE LATEST REVISION. QUESTO DISEGNO E' UN DOCUMENTO DI PROPRIETA' E RESPONSABILITA' DELL'AMP ITALIA S.p.A. SOGGETTO A VARIAZIONI. PER OTTENERE L'ULTIMA REVISIONE DEL DISEGNO CONTATTARE AMP ITALIA S.p.A.</small>		DWN / DIS. 4-MAR-99 ANDREA MARANGON CHK / CONT. 4-MAR-99 OSCARE CANUTO APVD / APP. 4-MAR-99 ALESSANDRO GENTA	AMP AMP ITALIA Sp.A. C.so Filii Cervi 15 COLLEGN0 (TO)
DIMENSIONS: DIMENSIONI: mm	TOLERANCES UNLESS OTHERWISE SPECIFIED: TOLLERANZE; SE NON DIVERSAMENTE SPECIFICATO 0 PLC / DEC ±0.3 1 PLC / DEC ±0.3 2 PLC / DEC ± 3 PLC / DEC ± 4 PLC / DEC ± ANGLES / ANGOLI ±2	NAME NONE PRODUCT SPEC SPEC DI PRODOTTO SEE SHEET1 (VEDERE FOGLIO1) APPLICATION SPEC SPEC DI APPLICAZIONE SEE SHEET1 (VEDERE FOGLIO1)	12 POS. NEW GENERATION RECEPTACLE CONNECTOR for trucks
MATERIAL MATERIALE SEE SHEET1 (VEDERE FOGLIO1)	FINISH FINITURA -	WEIGHT PESO SEE SHEET1 (VEDERE FOGLIO1)	SIZE A3 CAGE CODE 00779 DRAWING NO NUMERO 282990
CUSTOMER DRAWING FOR REFERENCE ONLY		DISEGNO PER CLIENTE SOLO PER RIFERIMENTO	
SCALE SCALA -		SHEET FOGLIO 2 OF 2	REV A1

单击下面可查看定价，库存，交付和生命周期等信息

[>>TE Connectivity\(泰科\)](#)