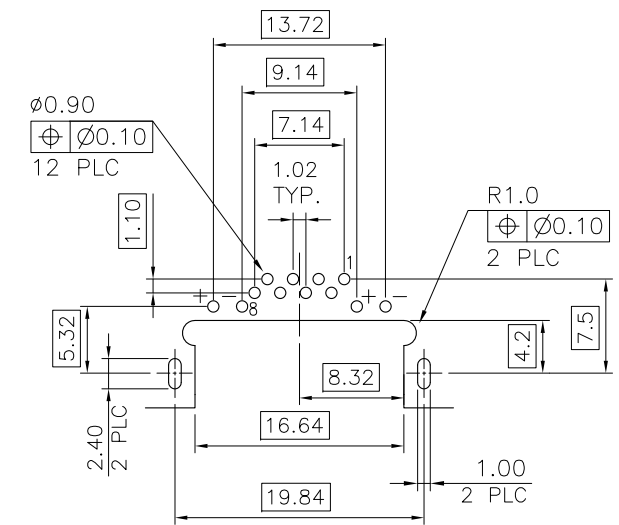
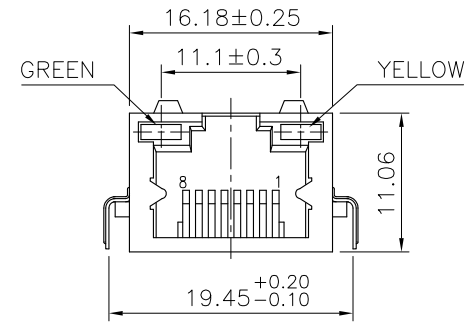
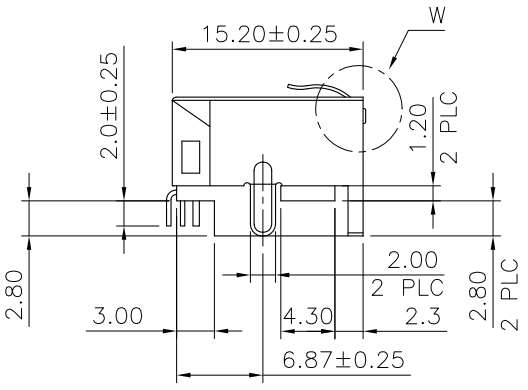
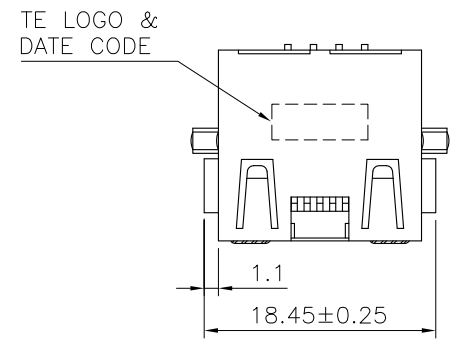
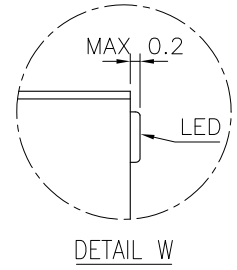
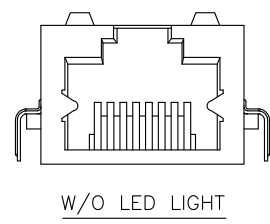
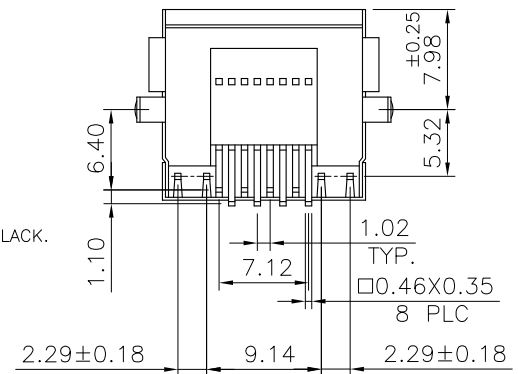


THIS DRAWING IS UNPUBLISHED. RELEASED FOR PUBLICATION  
 © COPYRIGHT 2013 BY TE CONNECTIVITY. ALL RIGHTS RESERVED.

LOC	DIST	REVISIONS					
DW	-	P	LTR	DESCRIPTION	DATE	DWN	APVD
		A2		ECR-12-012115	23OCT12	EL	WK



RECOMMENDED PCB LAYOUT (THICKNESS: 1.6mm)  
 (DIMENSION TOLERANCE: 1 PLC: ±0.1 2PLC: ±0.05)



NOTE:

- MATERIAL:  
HOUSING: THERMOPLASTIC HIGH TEMP., UL94 V-0, COLOR: BLACK.  
CONTACT: PHOSPHOR BRONZE, THICKNESS: 0.35mm.  
SHELL: BRASS, THICKNESS: 0.20mm.  
LED LIGHT: EPOXY RESIN, THICKNESS: 0.50mm.
  - FINISH:  
CONTACT: GOLD PLATED (SEE TABLE) IN CONTACT AREA, GOLD FLASH ON SOLDER TAILS, 50u" MIN. NICKEL UNDER PLATED ALL OVER.  
SHELL: 20u" MIN. NICKEL PLATED.  
LED LIGHT: 65u" MIN Ag PLATED, 85u" MIN TIN PLATED.
  - LED MUST BE REFLOW COMPATIBLE TO FOLLOWING TEMPERATURE PROFILE (FOR 1 CYCLE): ABOVE 160°C FOR 120 SECONDS, PEAKING AT 245°C FOR 20~40 SECONDS.
  - LED DEFECT RATE IS 6000 PPM MAX. AFTER IR REFLOW PROCESS AS NOTE 3.
  - WAVE SOLDER CAPABLE TO 265°C PER 109-202, CONDITION B.
- ⚠️ OBSOLETE PARTS: OBSOLETE CIS STREAMLINING PER D.RENAUD/D.SINISI

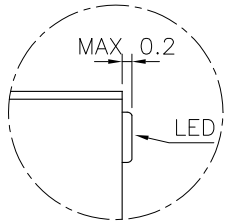
OBSOLETE	REEL	W/O	50μ"	3-1734719-8
			30μ"	3-1734719-7
			15μ"	3-1734719-6
OBSOLETE	REEL	W/	6μ"	3-1734719-5
			50μ"	3-1734719-4
			30μ"	3-1734719-3
OBSOLETE	REEL	W/O	15μ"	3-1734719-2
			6μ"	3-1734719-1
			50μ"	1734719-8
OBSOLETE	TRAY	W/O	30μ"	1734719-7
			15μ"	1734719-6
			6μ"	1734719-5
OBSOLETE	TRAY	W/	50μ"	1734719-4
			30μ"	1734719-3
			15μ"	1734719-2
			6μ"	1734719-1
	PACKAGE	LED LIGHT	MIN. GOLD THICKNESS	PART NUMBER

THIS DRAWING IS A CONTROLLED DOCUMENT.

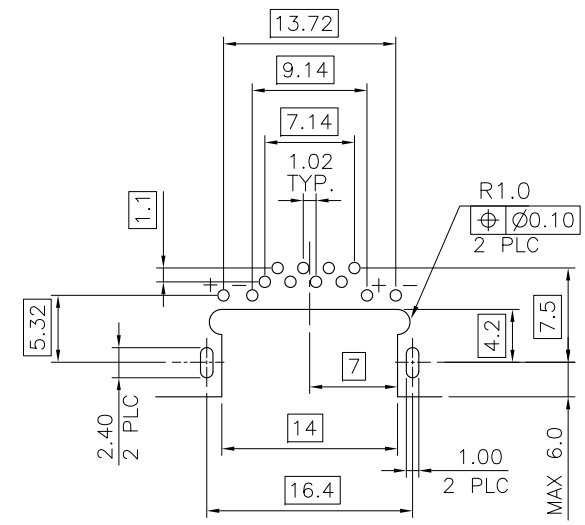
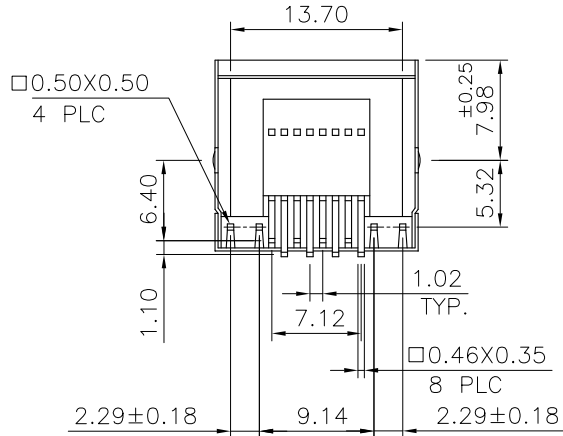
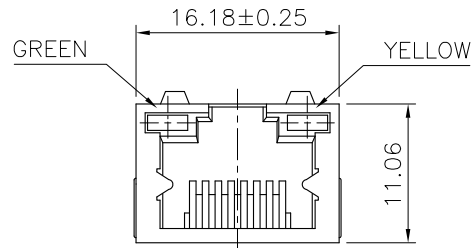
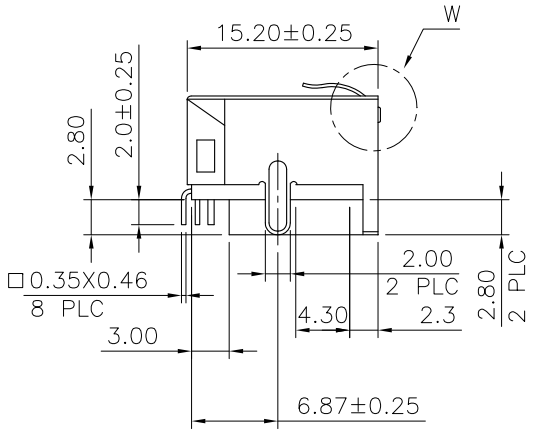
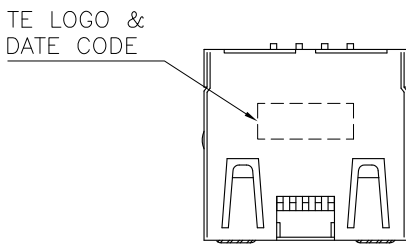
DIMENSIONS: MM	TOLERANCES UNLESS OTHERWISE SPECIFIED:	DWN O. HU 13DEC2005	TE Connectivity MODULAR JACK, RJ45, SINGLE ENTRY, DIP TYPE
	0 PLC ± 0.5	CHK S. HOU 13DEC2005	
	1 PLC ± 0.3	APVD W.J. KE 13DEC2005	
	2 PLC ± 0.2	NAME 108-57535	
MATERIAL	FINISH	PRODUCT SPEC	SIZE CAGE CODE DRAWING NO RESTRICTED TO
SEE NOTE	SEE NOTE	APPLICATION SPEC	WEIGHT 3 GRAMS A3 00779 C=1734719
		ANGLES ± - ± 3'	CUSTOMER DRAWING SCALE SHEET 1 OF 4 REV A2

THIS DRAWING IS UNPUBLISHED. RELEASED FOR PUBLICATION  
 © COPYRIGHT 2013 BY TE CONNECTIVITY. ALL RIGHTS RESERVED.

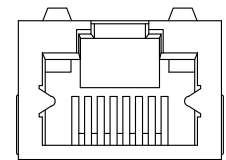
LOC	DIST	REVISIONS					
DW	-	P	LTR	DESCRIPTION	DATE	DWN	APVD
				SEE SHEET 1			



DETAIL W



RECOMMENDED PCB LAYOUT (THICKNESS: 1.6mm)  
 (DIMENSION TOLERANCE: 1 PLC: ±0.1 2PLC: ±0.05)



W/O LED LIGHT

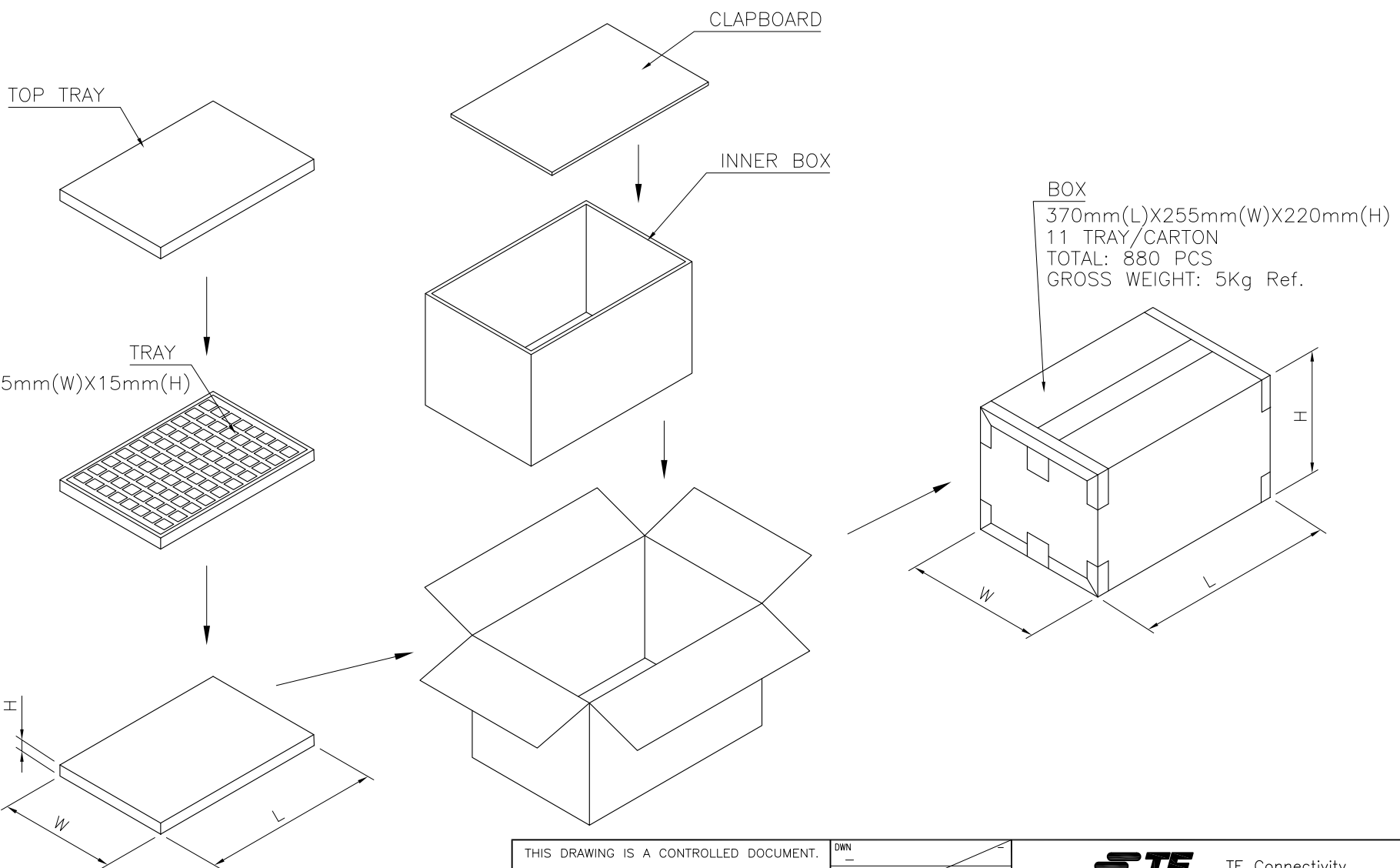
PACKAGE	LED LIGHT	MIN. GOLD THICKNESS	PART NUMBER
OBSOLETE	REEL	W/O	50µ" 2-1734719-8
			30µ" 2-1734719-7
			15µ" 2-1734719-6
OBSOLETE	REEL	W/	6µ" 2-1734719-5
			50µ" 2-1734719-4
			30µ" 2-1734719-3
OBSOLETE	TRAY	W/O	50µ" 1-1734719-8
			30µ" 1-1734719-7
			15µ" 1-1734719-6
		W/	6µ" 1-1734719-5
			50µ" 1-1734719-4
			30µ" 1-1734719-3
			15µ" 1-1734719-2
			6µ" 1-1734719-1

- NOTE:
- MATERIAL:  
HOUSING: THERMOPLASTIC HIGH TEMP., UL94V-0, COLOR: BLACK.  
CONTACT: PHOSPHOR BRONZE, THICKNESS: 0.35mm.  
SHELL: BRASS, THICKNESS: 0.20mm.
  - FINISH:  
CONTACT: GOLD PLATED (SEE TABLE) IN CONTACT AREA,  
GOLD FLASH ON SOLDER TAILS,  
50u" MIN. NICKEL UNDER PLATED ALL OVER.  
SHELL: 20u" MIN. NICKEL PLATED.
  - WAVE SOLDER CAPABLE TO 265°C PER TYCO SPEC 109-202,  
CONDITION B.

THIS DRAWING IS A CONTROLLED DOCUMENT.		DWN -	TE Connectivity				
DIMENSIONS: MM		CHK -					
TOLERANCES UNLESS OTHERWISE SPECIFIED:		APVD -	NAME				
0 PLC ± 0.5 1 PLC ± 0.3 2 PLC ± 0.2 3 PLC ± 0.1 4 PLC ± 0.1 ANGLES ± - ± 3°		PRODUCT SPEC -	MODULAR JACK, RJ45, SINGLE ENTRY, DIP TYPE				
MATERIAL SEE NOTE		APPLICATION SPEC -	SIZE A3	CAGE CODE 00779	DRAWING NO. ©-1734719	RESTRICTED TO -	
FINISH SEE NOTE		WEIGHT -	CUSTOMER DRAWING		SCALE -	SHEET 2 of 4	REV A2

THIS DRAWING IS UNPUBLISHED.      RELEASED FOR PUBLICATION  
 © COPYRIGHT 2013 BY TE CONNECTIVITY.      ALL RIGHTS RESERVED.

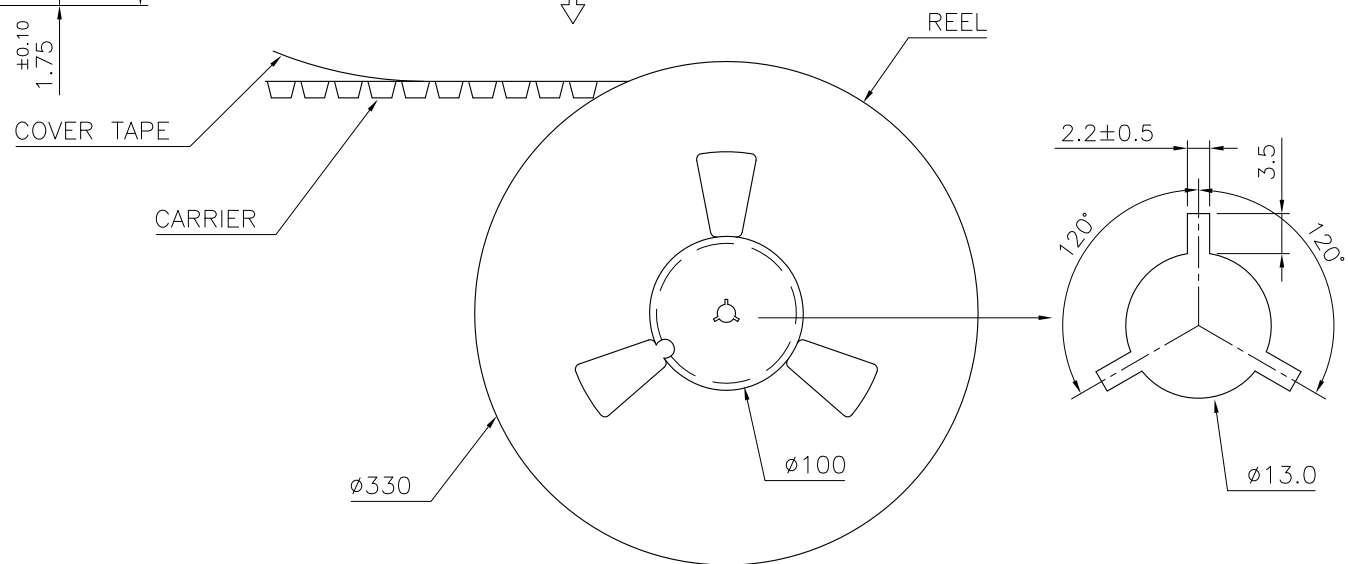
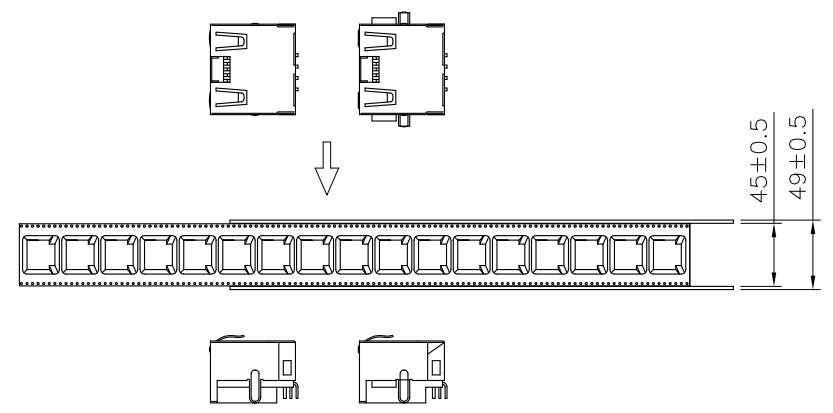
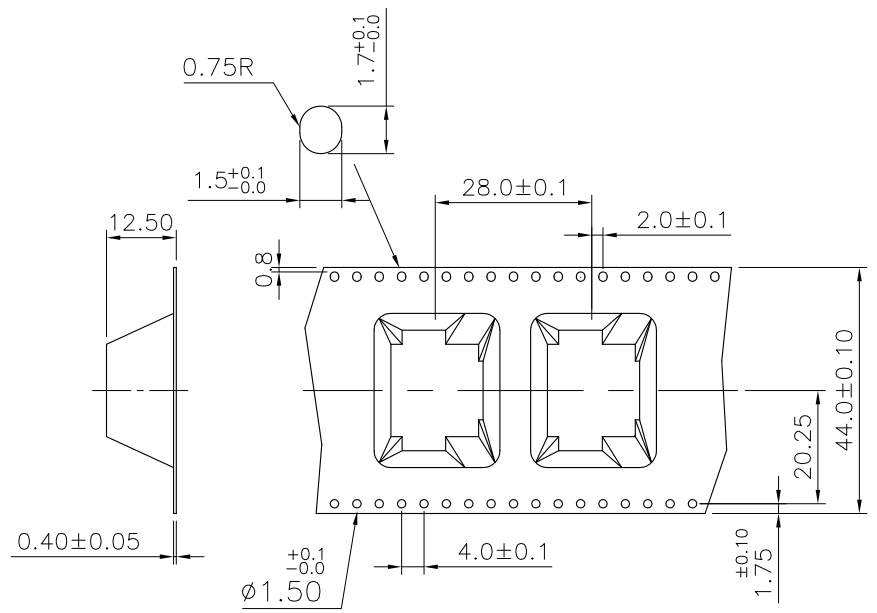
LOC DW	DIST —	REVISIONS			
P	LTR	DESCRIPTION	DATE	DWN	APVD
		SEE SHEET 1			



THIS DRAWING IS A CONTROLLED DOCUMENT.		DWN —	<b>STE</b> TE Connectivity		
DIMENSIONS: MM		CHK —			
TOLERANCES UNLESS OTHERWISE SPECIFIED:		APVD —	NAME		
0 PLC ± -		PRODUCT SPEC —	MODULAR JACK, RJ45, SINGLE ENTRY, DIP TYPE		
1 PLC ± -		APPLICATION SPEC —	SIZE A3	CAGE CODE 00779	DRAWING NO C=1734719
2 PLC ± -		WEIGHT —	RESTRICTED TO —		
3 PLC ± -		CUSTOMER DRAWING	SCALE —	SHEET 3 of 4	REV A2
4 PLC ± -					
ANGLES ± -					
FINISH					

THIS DRAWING IS UNPUBLISHED. RELEASED FOR PUBLICATION  
 © COPYRIGHT 2013 BY TE CONNECTIVITY. ALL RIGHTS RESERVED.

LOC	DIST	REVISIONS					
DW	-	P	LTR	DESCRIPTION	DATE	DWN	APVD
				SEE SHEET 1			



- NOTES:
- A. THE DIRECTION OF JACKS PUT INTO CARRIER.
  - B. 10 EMPTY CAVITIES FOR BOTH OF TOP AND BOTTOM OF THE CARRIER.
  - C. 200 PCS PRODUCTS BE PACKAGED ONE REEL.
  - D. BOX SIZE: 345(L)X345(W)X315(H)  
6 REEL/BOX  
TOTAL: 1200 PCS

THIS DRAWING IS A CONTROLLED DOCUMENT.		DWN	-	TE Connectivity	
DIMENSIONS: MM		CHK	-		
TOLERANCES UNLESS OTHERWISE SPECIFIED:		APVD	-	NAME	
0 PLC ±		PRODUCT SPEC	-	MODULAR JACK, RJ45, SINGLE ENTRY, DIP TYPE	
1 PLC ±		APPLICATION SPEC	-	SIZE	A3
2 PLC ±		WEIGHT	-	CAGE CODE	00779
3 PLC ±		CUSTOMER DRAWING		DRAWING NO	C=1734719
4 PLC ±		SCALE		RESTRICTED TO	-
ANGLES ±		SHEET		4 of 4	
FINISH		REV		A2	

单击下面可查看定价，库存，交付和生命周期等信息

[>>TE Connectivity\(泰科\)](#)