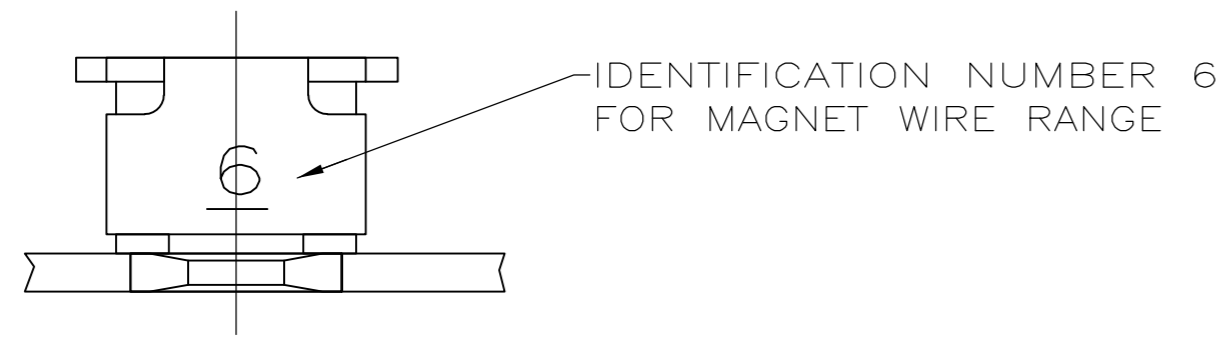
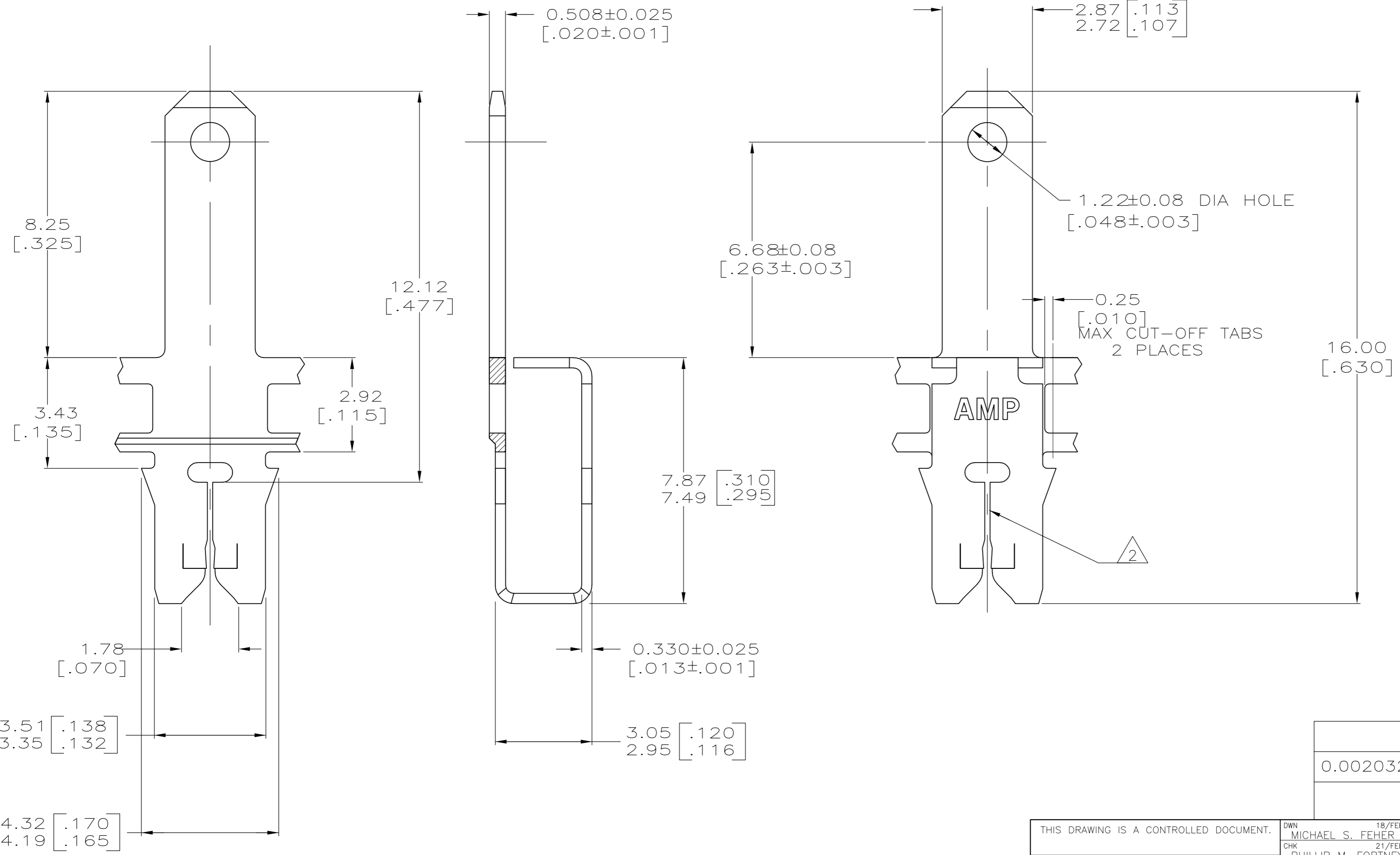


THIS DRAWING IS UNPUBLISHED. RELEASED FOR PUBLICATION
 © COPYRIGHT - By - ALL RIGHTS RESERVED.

LOC	DIST	REVISIONS			
P	LTR	DESCRIPTION	DATE	DWN	APVD
AF	50	E2	ECR-15-005665	10AUG2015	BDA PKS



- 1 CONTINUOUS STRIP ON REELS WITH TERMINALS LOCATED ON 5.59±0.08 [.220±.003] CENTERS.
- 2 SLOT TERMINATES EITHER A SINGLE OR DOUBLE MAGNET WIRE OF THE SAME SIZE.
 COPPER RANGE: 0.25-0.36mm [#30-#27] AWG.
 ALUMINUM RANGE: 0.32-0.45mm [#28-#25] AWG.
 ALUMINUM WIRE RANGE APPLIES FOR POST-TIN PLATED VERSIONS ONLY.
- 3 PRILIMINARY - NOT FOR PRODUCTION



UNPLATED	3 63777-2
0.002032 [.000080] MIN TIN	63777-1
FINISH	PART NO

THIS DRAWING IS A CONTROLLED DOCUMENT.		DWN 18/FEB/94 MICHAEL S. FEHER	STE TE Connectivity	
DIMENSIONS: INCHES		CHK 21/FEB/94 PHILLIP M. FORTNEY		
TOLERANCES UNLESS OTHERWISE SPECIFIED:		APVD 21/FEB/94 TL SHUTTER	NAME	
0 PLC ± -		PRODUCT SPEC	TAB, FASTON,	
1 PLC ± -		108-2012	2.79 [.110], MAG-MATE	
2 PLC ± 0.25 [.010]		APPLICATION SPEC	SIZE	CAGE CODE
3 PLC ± -		114-2046	A2	00779
4 PLC ± -		WEIGHT	DRAWING NO	RESTRICTED TO
ANGLES ± -		-	C=63777	-
FINISH		CUSTOMER DRAWING	SCALE 10:1	SHEET 1 OF 1
H04 PREMILLED BRASS		SEE TABLE	REV E2	

单击下面可查看定价，库存，交付和生命周期等信息

[>>TE Connectivity\(泰科\)](#)