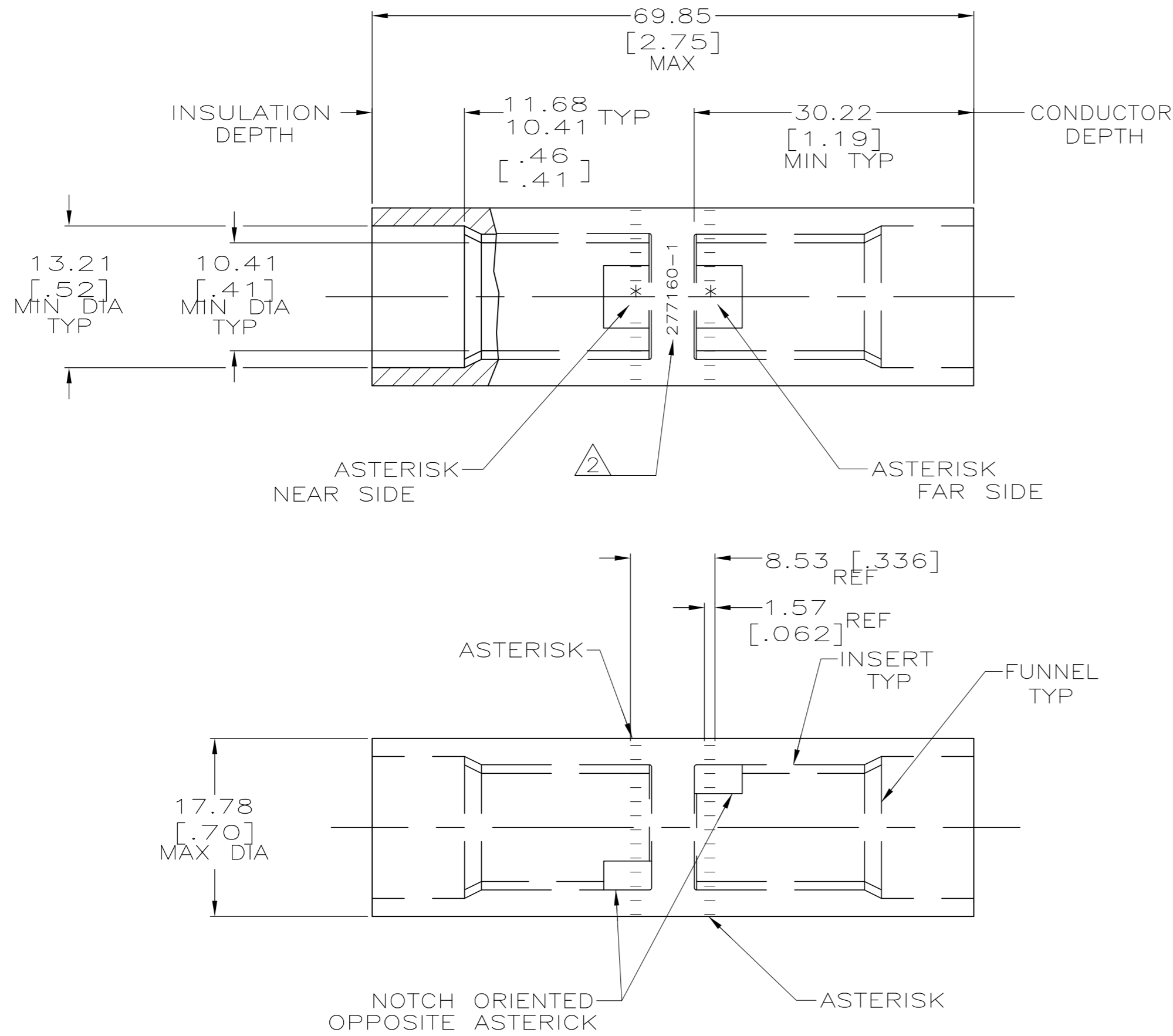


THIS DRAWING IS UNPUBLISHED. RELEASED FOR PUBLICATION  
 © COPYRIGHT - By - ALL RIGHTS RESERVED.

LOC	DIST	REVISIONS					
		P	LTR	DESCRIPTION	DATE	DWN	APVD
G	86	N		REV PER ECO-11-008916	13MAY11	PY	BW

- 1 WIRE INSULATION: 10.79[.425] - 11.94[.470] DIA
- 2 STAMP " 277160-1 AMP 1/0 AL - 2CU"  
APPROX AS SHOWN



SPLICE: COPPER ASTM B-187 TIN PL ASTM B 545 0.00381[.000150] MIN THK INSERT & FUNNEL: BRASS ASTM B36 NICKEL PL SAE AMS QQ-N-290A, DATED JULY 2000, 0.00254 [.000100] MIN THK	277160-1
MATERIAL & FINISH	PART NO.

THIS DRAWING IS A CONTROLLED DOCUMENT.		DWN DK SCHRUM 7/5/89		
CR RHOADS: MM [ INCHES ]		CHK MS FEHER 5/1/90		
TOLERANCES UNLESS OTHERWISE SPECIFIED:		APVD CR RHOADS 2/24/92	NAME	
0 PLC ± - 1 PLC ± - 2 PLC ± - 3 PLC ± - 4 PLC ± - ANGLES ± -		PRODUCT SPEC 108-11011	WIRE SPLICE, BUTT, SEALED COPALUM, 55.5mm2 [1/0] ALUMINUM 34.3mm2 [2] COPPER	
MATERIAL SEE TABLE		FINISH SEE TABLE	SIZE 114-2134	CAGE CODE A2 00779
		WEIGHT 76.0 GRAMS	DRAWING NO C-277160	RESTRICTED TO -
		CUSTOMER DRAWING	SCALE 2:1	SHEET 1 of 1
				REV N

单击下面可查看定价，库存，交付和生命周期等信息

[>>TE Connectivity\(泰科\)](#)